





## UNIVERSITY OF WISCONSIN-LACROSSE

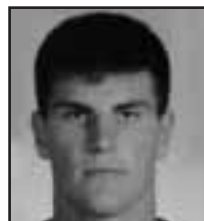
SEPTEMBER 1, 2001 • 1 P.M. • VETERANS MEMORIAL STADIUM • LACROSSE, WISC.

## GENERAL

**Location:** LaCrosse, Wis.  
**Founded:** 1909  
**Enrollment:** 9,000  
**Affiliation:** NCAA III  
**Conference:** Wisconsin-Intercollegiate  
**Nickname:** Eagles  
**Colors:** Maroon and Gray  
**President:** Dr. Douglas Hastad  
**Director of Athletics:** Joe Baker  
**Football SID:** David Johnson  
**E-mail:** johnson.dav2@uwlax.edu  
**Phone:** 608.785.8493  
**Fax:** 608.785.6539  
**Press Box Phone:** 608.785.8991



Larry Terry



Josh Boraas

## FOOTBALL

**Head Coach:** Larry Terry  
 Alma Mater: UWL 1977  
 Record at UWL: 7-3, one year  
 Overall Record: 32-32-1, 7 years  
 Phone: 608.785.8686

**Assistant Coaches:** Barry Schockmel,  
 Mike Anderson, Mick Miyamoto, Frank  
 Tierney, Mike Deans, Mike Durnin

**2000 Record:** 7-3

**WIAC Record, Finish:** 6-1, 2nd

**Basic Formations:** Multiple • 4-3

**Lettermen:** Returning-37 • Lost-20

**Returning Starters:** Offense-5 •

Defense-6 • Specialty-3

## SERIES NOTES

**Series Record:** Washburn leads 3-0  
**First meeting:** WU 24, UWL 21 in 1999  
**Last meeting:** WU 26, UWL 6 in 2000  
**Last WU win:** 26-6 in 2000  
**Last UWL win:** n/a  
**Largest WU win:** 26-6 in 2000  
**Largest UWL win:** n/a

## 2001 SCHEDULE

**Sept. 1 Washburn** ..... 1 p.m.  
 Sept. 8 at Winona State ..... 7 p.m.  
 Sept. 15 at St. Francis ..... 1 p.m.  
 Sept. 29 UW-Stevens Point\* ..... 5 p.m.  
 Oct. 6 at UW-Platteville\* ..... 2 p.m.  
 Oct. 13 UW-Oshkosh\* ..... 1 p.m.  
 Oct. 20 UW-Whitewater\* ..... 1 p.m.  
 Oct. 27 at UW-River Falls\* ..... 1 p.m.  
 Nov. 3 at UW-Eau Claire\* ..... 11:30 a.m.  
 Nov. 10 UW-Stout\* ..... 1 p.m.

## 2000 RESULTS (7-3)

**Sept. 2 at Washburn** ..... L 6-26  
 Sept. 9 Winona State ..... L 9-27  
 Sept. 23 UW-River Falls ..... W 38-13  
 Sept. 30 at UW-Whitewater ..... W 23-22  
 Oct. 7 UW-Platteville ..... W 30-0  
 Oct. 14 at UW-Stout ..... L 23-27  
 Oct. 21 at UW-Stevens Point ..... W 20-7  
 Oct. 28 UW-Eau Claire ..... W 27-18  
 Nov. 4 at UW-Oshkosh ..... W 24-12  
 Nov. 11 vs Northern State ..... W 20-14

## PITTSBURG STATE UNIVERSITY

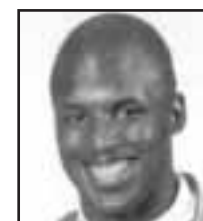
SEPTEMBER 29, 2001 • 7 P.M. • CARNIE SMITH STADIUM • PITTSBURG, KAN.

## GENERAL

**Location:** Pittsburg, Kan.  
**Founded:** 1903  
**Enrollment:** 6,377  
**Affiliation:** NCAA II  
**Conference:** Mid-America Intercollegiate  
**Nickname:** Gorillas  
**Colors:** Crimson and Gold  
**President:** Dr. Tom Bryant  
**Director of Athletics:** Chuck Broyles  
**Football SID:** Dan Wilkes  
**E-mail:** dwilkes@pittstate.edu  
**Phone:** 620.235.4147  
**Fax:** 620.235.4149  
**Press Box Phone:** 620.235.4869



Chuck Broyles



Anthony Chatmon

## FOOTBALL

**Head Coach:** Chuck Broyles  
 Alma Mater: PSU - 1970  
 Record at PSU: 112-21-2, 11 years  
 Overall Record: Same  
 Phone: 620.235.4389

**Assistant Coaches:** Tim Beck, Anton  
 Stewart, Bill Kroenke, John Pierce, Carl  
 Roth, Craig Schurig

**2000 Record:** 9-3

**MIAA Record, Finish:** 7-2, 3rd

**Basic Formations:** Double Tight/Split  
 Back/Veer • 4-4

**Lettermen:** Returning-43 • Lost-14

**Returning Starters:** Offense-9 •

Defense-7 • Specialty-2

## SERIES NOTES

**Series Record:** PSU leads 54-18-1  
**First meeting:** WU 7, PSU 0 • 1920  
**Last meeting:** PSU 31, WU 28 • 2000  
**Last WU win:** 38-36 in 1980  
**Last PSU win:** 31-28 in 2000  
**Largest WU win:** 36-13 in 1953  
**Largest PSU win:** 61-0 in 1989

## 2001 SCHEDULE

Aug. 25 Southwest Assemblies of God 7 p.m.  
 Sept. 8 Bacone (Okla.) ..... 7 p.m.  
**Sept. 15 Washburn** ..... 7 p.m.  
 Sept. 22 at Missouri Western ..... 6 p.m.  
 Sept. 29 at Missouri Southern ..... 7 p.m.  
 Oct. 6 Emporia State ..... 2 p.m.  
 Oct. 13 Northwest Missouri ..... 2 p.m.  
 Oct. 20 at Missouri-Rolla ..... 1 p.m.  
 Oct. 27 Truman ..... 2 p.m.  
 Nov. 3 at Southwest Baptist ..... 1:30 p.m.  
 Nov. 8 at Central Missouri ..... 7:05 p.m.

## 2000 RESULTS (9-3)

Sept. 2 North Alabama ..... WOT 28-21  
 Sept. 9 vs Mesa State ..... W 41-7  
 Sept. 16 at Northwest Missouri ..... L 28-35  
 Sept. 23 Central Missouri ..... W 23-20  
 Sept. 30 at Missouri Western ..... L 7-17  
 Oct. 7 Missouri Southern ..... W 42-14  
 Oct. 14 at Emporia State ..... W 21-0  
**Oct. 21 Washburn** ..... W 31-28  
 Oct. 28 at Missouri-Rolla ..... W 52-10  
 Nov. 4 Southwest Baptist ..... W 69-7  
 Nov. 11 Truman ..... W 39-9  
 Nov. 18 at Nebraska-Omaha ..... L 3-14

## LINCOLN UNIVERSITY

SEPTEMBER 8, 2001 • 6 P.M. • MOORE BOWL • TOPEKA, KANSAS

## GENERAL

**Location:** Jefferson City, Mo.  
**Founded:** 1866  
**Enrollment:** 5,000  
**Affiliation:** NAIA  
**Conference:** Independent  
**Nickname:** Blue Tigers  
**Colors:** Blue and White  
**President:** Dr. David B. Henson  
**Director of Athletics:** Theresa Ferguson  
**Football SID:** David Klopfer  
**E-mail:** klopferd@lincolnu.edu  
**Phone:** 573.681.5343  
**Fax:** 573.681.5324  
**Press Box Phone:** n/a



Jack Bush



Toranza Every

## FOOTBALL

**Head Coach:** Jack Bush  
 Alma Mater: Lincoln - 1977  
 Record at LU: 6-3, two years  
 Overall Record: 10-7, three years  
 Phone: 573.681.5874

**Assistant Coaches:** Kevin Faulkner,  
 Greg Ruffin, Lemar Parrish, Fred Manuel,  
 Marcus Graham

**2000 Record:** 3-6

**Basic Formations:** Multiple • 4-3

**Lettermen:** Returning-27 • Lost-4

**Returning Starters:** 9 overall

## SERIES NOTES

**Series Record:** WU leads 2-0  
**First meeting:** WU 9, LU 0 in 1989  
**Last meeting:** WU 63, LU 21 in 2000  
**Last WU win:** 63-21 in 2000  
**Last LU win:** n/a  
**Largest WU win:** 63-21 in 2000  
**Largest LU win:** n/a

## 2001 SCHEDULE

Aug. 30 at Central Missouri ..... 7:05 p.m.  
 Sept. 8 at Washburn ..... 6 p.m.  
 Sept. 15 Lane College ..... 7 p.m.  
 Sept. 29 at Elizabeth City State 1:30 p.m.  
 Oct. 6 at W. New Mexico State ..... 1 p.m.  
 Oct. 13 Westminster College ..... 2 p.m.  
 Oct. 20 Langston University ..... 2 p.m.  
 Oct. 27 at Haskell University ..... 1 p.m.  
 Nov. 3 at Gannon University ..... 1 p.m.  
 Nov. 10 at Stillman College ..... 1:30 p.m.

## 2000 RESULTS (3-6)

Sept. 2 at Lane College ..... L 6-14  
**Sept. 9 Washburn** ..... L 21-63  
 Sept. 23 at SW Assemblies of God ..... W 41-14  
 Sept. 30 Peru State ..... L 17-27  
 Oct. 7 at Clark Atlanta ..... L 0-48  
 Oct. 14 Stillman College ..... W 30-24  
 Oct. 21 at Langston ..... L 19-27  
 Oct. 28 Haskell Indian ..... W 42-0  
 Nov. 11 at Northwestern Okla. .... L 0-60

## MISSOURI SOUTHERN STATE COLLEGE

SEPTEMBER 22, 2001 • 6 P.M. • MOORE BOWL • FAMILY DAY • TOPEKA, KAN.

## GENERAL

**Location:** Joplin, Mo.  
**Founded:** 1937  
**Enrollment:** 5,750  
**Affiliation:** NCAA II  
**Conference:** Mid-America Intercollegiate  
**Nickname:** Lions  
**Colors:** Green and Gold  
**President:** Dr. Julio S. Leon  
**Director of Athletics:** Sallie Beard  
**Football SID:** Joe Moore  
**E-mail:** moore-j@mail.mssc.edu  
**Phone:** 417.625.9359  
**Fax:** 417.625.9397  
**Press Box Phone:** 417.625.3087



Bill Cooke



Joey Ballard

## FOOTBALL

**Head Coach:** Bill Cooke  
 Alma Mater: Fort Lewis - 1973  
 Record at MSSC: 5-16, 2 seasons  
 Overall Record: 25-31-1, 6 season  
 Phone: 417.625.9358

**Assistant Coaches:** Alan Dykens, Chris  
 Fancher, Rob Green, Mark Smith, Travis  
 Rhatigan, Bob Ray, Kevin LaRue

**2000 Record:** 2-9

**MIAA Record, Finish:** 2-7, 8th

**Basic Formations:** Option • 4-4

**Lettermen:** Returning-28 • Lost-15

**Returning Starters:** Offense-7 •

Defense-5 • Specialty-2

## SERIES NOTES

**Series Record:** MSSC leads 19-11-1  
**First meeting:** WU 21, MSSC 21 • 1970  
**Last meeting:** WU 24, MSSC 22 • 2000  
**Last WU win:** 24-22 in 2000  
**Last MSSC win:** 17-14 in 1997  
**Largest WU win:** 25-7 in 1986  
**Largest MSSC win:** 44-14 in 1992

## 2001 SCHEDULE

Sept. 8 Northeastern State ..... 7 p.m.  
 Sept. 13 at Southwest Baptist ..... 7 p.m.  
**Sept. 22 at Washburn** ..... 6 p.m.  
 Sept. 29 Pittsburg State ..... 7 p.m.  
 Oct. 6 Northwest Missouri ..... 7 p.m.  
 Oct. 13 at Truman ..... 2 p.m.  
 Oct. 20 Central Missouri ..... 7 p.m.  
 Oct. 25 at Missouri Western ..... 7:05 p.m.  
 Nov. 3 at Emporia State ..... 2 p.m.  
 Nov. 10 Missouri-Rolla ..... 2:00 p.m.

## 2000 RESULTS (2-9)

Sept. 2 at Northeastern State ..... L 15-33  
 Sept. 9 at Southwest Missouri ..... L 3-48  
**Sept. 16 Washburn** ..... L 22-24  
 Sept. 23 at Emporia State ..... L 0-24  
 Sept. 30 Southwest Baptist ..... W 41-14  
 Oct. 7 at Pittsburg State ..... L 14-42  
 Oct. 14 Northwest Missouri ..... L 0-52  
 Oct. 21 at Truman ..... L 28-30  
 Oct. 28 Missouri Western ..... L 21-28  
 Nov. 4 Central Missouri ..... L 0-35  
 Nov. 11 at Missouri-Rolla ..... W 20-7



## NORTHWEST MISSOURI STATE UNIVERSITY

SEPTEMBER 29, 2001 • 1:30 P.M. • RICKENBRODE STADIUM • MARYVILLE, MO.

## GENERAL

**Location:** Maryville, Mo.**Founded:** 1905**Enrollment:** 6,200**Affiliation:** NCAA II**Conference:** Mid-America Intercollegiate**Nickname:** Bearcats**Colors:** Forest Green and White**President:** Dr. Dean L. Hubbard**Director of Athletics:** Dr. Robert Boerigter**Football SID:** Andy Seeley**E-mail:** nwsid@nwmissouri.edu**Phone:** 660.562.1118**Fax:** 660.562.1582**Press Box Phone:** 660.562.1582

Mel Tjeerdsma



Ryan Miller

## FOOTBALL

**Head Coach:** Mel Tjeerdsma

Alma Mater: Southern State - 1967

Record at NWMSU: 69-21, 7 years

Overall Record: 139-59-4, 17 years

Phone: 660.562.1311

**Assistant Coaches:** Jim Svoboda, Scott

Bostwick, Bart Tatum, Jon Gustafson

**2000 Record:** 11-1**MIAA Record, Finish:** 9-0, 1st**Basic Formations:** Multiple • 4-3**Returning Starters:** Offense-3 •

Defense-6 • Specialty-0

## SERIES NOTES

**Series Record:** NWMSU leads 14-5**First meeting:** NWMSU 27, WU 0 • 1944**Last meeting:** NWMSU 63, WU 21 • 2000**Last WU win:** 48-14 in 1994**Last NWMSU win:** 63-21 in 2000**Largest WU win:** 48-14 in 1994**Largest NWMSU win:** 47-0 in 1984

## 2001 SCHEDULE

Sept. 1 at Nebraska-Omaha . . . . . 7 p.m.

Sept. 8 Minn. State-Mankato 1:30 p.m.

Sept. 15 at Missouri-Rolla . . . . . 1:30 p.m.

Sept. 22 Southwest Baptist . . . . . 1:30 p.m.

**Sept. 29 Washburn . . . . . 1:30 pm.**

Oct. 6 at Missouri Southern . . . . . 7 p.m.

Oct. 13 at Pittsburg State . . . . . 2 p.m.

Oct. 20 Truman . . . . . 2 p.m.

Oct. 27 at Central Missouri . . . . . 1:30 p.m.

Nov. 3 Missouri Western State . . . . . 1 p.m.

Nov. 10 Emporia State . . . . . 1 pm

## 2000 RESULTS (11-1)

Sept. 2 Nebraska-Omaha . . . . . W 24-17

Sept. 9 at Minnesota State . . . . . W 34-28

Sept. 16 Pittsburg State . . . . . W 35-28

Sept. 23 at Southwest Baptist . . . . . W 65-10

Sept. 30 at Truman . . . . . W 31-20

Oct. 7 Missouri Western . . . . . W 46-27

Oct. 14 at Missouri Southern . . . . . W 52-0

Oct. 21 Emporia State . . . . . W 62-7

**Oct. 28 at Washburn . . . . . W 63-21**

Nov. 4 Missouri-Rolla . . . . . W 70-7

Nov. 11 at Central Missouri . . . . . W 55-17

Nov. 18 North Dakota State . . . . . L 17-31

## CENTRAL MISSOURI STATE UNIVERSITY

OCTOBER 11, 2001 • 7:05 P.M. • METRO SPORTS TV • MOORE BOWL • TOPEKA, KAN.

## GENERAL

**Location:** Warrensburg, Mo.**Founded:** 1871**Enrollment:** 11,000**Affiliation:** NCAA II**Conference:** Mid-America Intercollegiate**Nickname:** Mules**Colors:** Cardinal and Black**President:** Dr. Bobby Patton**Director of Athletics:** Jerry Hughes**Football SID:** Bill Turnage**E-mail:** turnage@cmsu1.cmsu.edu**Phone:** 660.543.4312**Fax:** 660.543.8034**Press Box Phone:** 660.543.4905

Willie Fritz



Kevin Nickerson

## FOOTBALL

**Head Coach:** Willie Fritz

Alma Mater: Pittsburg State - 1983

Record at CMSU: 27-17, 4 years

Overall Record: Same

Phone: 660.543.4252

**Assistant Coaches:** Scott Grinde, Jeff

Hecklinski, Scott Baumgartner, Chuck

Clemens, Charlie Lee, Dan Oswald, Chris

Oswald

**2000 Record:** 7-4**MIAA Record, Finish:** 5-4, T4th**Basic Formations:** Pro • 4-3**Lettermen:** Returning-40 • Lost-14**Returning Starters:** Offense-8 •

Defense-7 • Specialty-2

## SERIES NOTES

**Series Record:** Tied 15-15-2**First meeting:** WU 6, CMSU 0 • 1902**Last meeting:** CMSU 28, WU 17 • 2000**Last WU win:** 23-7 in 1996**Last CMSU win:** 28-17 in 2000**Largest WU win:** 34-0 in 1963**Largest CMSU win:** 37-0 in 1998

## 2001 SCHEDULE

Aug. 30 Lincoln . . . . . 7:05 p.m.

Sept. 6 Ottawa . . . . . 7 p.m.

Sept. 15 Missouri Western . . . . . 7 p.m.

Sept. 22 at Emporia State . . . . . 7 p.m.

Sept. 29 at Missouri-Rolla . . . . . 1 p.m.

Oct. 6 Southwest Baptist . . . . . 2 p.m.

**Oct. 11 at Washburn . . . . . 7:05 p.m.**

Oct. 20 at Missouri Southern . . . . . 7 p.m.

Oct. 27 Northwest Missouri . . . . . 2 p.m.

Nov. 3 at Truman . . . . . 1 p.m.

Nov. 10 Pittsburg State . . . . . 1 p.m.

## 2000 RESULTS (7-4)

Aug. 31 Winona StateW . . . . . W 45-26

Sept. 9 Quincy . . . . . W 75-0

Sept. 16 Emporia State . . . . . W 34-21

Sept. 23 at Pittsburg State . . . . . L 20-23

**Sept. 30 Washburn . . . . . W 28-17**

Oct. 7 at Truman . . . . . L 14-28

Oct. 14 at Missouri-Rolla . . . . . W 33-7

Oct. 21 Missouri Western . . . . . LOT 16-23

Oct. 28 Southwest Baptist . . . . . W 41-10

Nov. 4 at Missouri Southern . . . . . W 35-0

Nov. 11 Northwest Missouri . . . . . L 17-55

## TRUMAN STATE UNIVERSITY

OCTOBER 6, 2001 • 2 P.M. • HOMECOMING • MOORE BOWL • TOPEKA, KAN.

## GENERAL

**Location:** Kirksville, Mo.**Founded:** 1867**Enrollment:** 6,000**Affiliation:** NCAA II**Conference:** Mid-America Intercollegiate**Nickname:** Bulldogs**Colors:** Purple and White**President:** Dr. Jack Magruder**Director of Athletics:** Jerry Wollmering**Football SID:** Melissa Ware**E-mail:** mware@truman.edu**Phone:** 660.785.4127/4276**Fax:** 660.785.7475**Press Box Phone:** 660.785.4276

John Ware



Eric Howe

## FOOTBALL

**Head Coach:** John Ware

Alma Mater: Drake University-1981

Record at TSU: 36-29, 6 years

Overall Record: Same

Phone: 660.785.4252

**Assistant Coaches:** Matt Copeland, Mat

Steinberg, Matt Nelson, Keeth Matheny,

Jeff Jacques, Erick Kruppe

**2000 Record:** 6-5**MIAA Record, Finish:** 5-4, T4th**Basic Formations:** Multiple • 4-4**Lettermen:** Returning-46 • Lost-12**Returning Starters:** Offense-9 •

Defense-7 • Specialty-1

## SERIES NOTES

**Series Record:** Truman leads 15-3**First meeting:** TSU 26, WU 13 • 1958**Last meeting:** TSU 45, WU 42 • 2000**Last WU win:** 52-13 in 1999**Last TSU win:** 45-42 in 2000**Largest WU win:** 52-13 in 1999**Largest TSU win:** 39-0 in 1962

## 2001 SCHEDULE

Sept. 1 Drake (Iowa) . . . . . 1:30 p.m.

Sept. 8 at Quincy (Ill.) . . . . . 1 p.m.

Sept. 15 Emporia State . . . . . 1:30 p.m.

Sept. 22 Missouri-Rolla . . . . . 2 p.m.

Sept. 29 at Southwest Baptist . . . . . 1:30 p.m.

**Oct. 6 at Washburn . . . . . 2 p.m.**

Oct. 13 Missouri Southern . . . . . 2 p.m.

Oct. 20 at Northwest Missouri . . . . . 2 p.m.

Oct. 27 at Pittsburg State . . . . . 2 p.m.

Nov. 3 Central Missouri . . . . . 1 p.m.

Nov. 10 at Missouri Western . . . . . 1 p.m.

## 2000 RESULTS (6-5)

Sept. 2 Northern Michigan . . . . . W 35-24

Sept. 9 at South Dakota . . . . . L 14-38

Sept. 16 Southwest Baptist . . . . . W 64-14

Sept. 23 at Missouri-Rolla . . . . . W 49-0

Sept. 30 Northwest Missouri . . . . . L 20-31

Oct. 7 Central Missouri . . . . . W 28-14

Oct. 14 at Missouri Western . . . . . L 19-20

Oct. 21 Missouri Southern . . . . . W 30-28

Oct. 28 at Emporia State . . . . . L 20-55

**Nov. 4 Washburn . . . . . W 45-42**

Nov. 11 at Pittsburg State . . . . . L 9-39

## MISSOURI WESTERN STATE COLLEGE

OCTOBER 20, 2001 • 1 P.M. • SPRATT STADIUM • ST. JOSEPH, MO.

## GENERAL

**Location:** St. Joseph, Mo.**Founded:** 1969**Enrollment:** 5,158**Affiliation:** NCAA II**Conference:** Mid-America Intercollegiate**Nickname:** Griffons**Colors:** Black and Gold**President:** Dr. James Scanlon**Director of Athletics:** Pete Chapman**Football SID:** Brett King**E-mail:** king@griffon.mwsc.edu**Phone:** 816.271.4257**Fax:** 816.271.4544**Press Box Phone:** 816.271.4257

Jerry Partridge



Kasey Waterman

## FOOTBALL

**Head Coach:** Jerry Partridge

Alma Mater: Missouri Western 1985

Record at MWSC: 25-20, 4 years

Overall Record: Same

Phone: 816.271.5944

**Assistant Coaches:** Jay Bubak, Les

Boyum, Doug Smith, Matt Williamson,

Regi Trotter, Phillip Nelson

**2000 Record:** 8-4**MIAA Record, Finish:** 8-1, 2nd**Basic Formations:** Multiple-1 • 4-3**Lettermen:** Returning-36 • Lost-19**Returning Starters:** Offense-6 •

Defense-6 • Specialty-1

## SERIES NOTES

**Series Record:** MWSC leads 15-12-2**First meeting:** WU 58, MWSC 3 • 1972**Last meeting:** MWSC 23, WU 13 • 2000**Last WU win:** 35-27 • 1998**Last MWSC win:** 23-13 • 2000**Largest WU win:** 58-3 in 1972**Largest MWSC win:** 52-0 in 1981

## 2001 SCHEDULE

Sept. 1 at Southeastern Oklahoma 7 p.m.

Sept. 8 Fort Hays State . . . . . 6 p.m.

Sept. 15 at Central Missouri . . . . . 7 p.m.

Sept. 22 Pittsburg State . . . . . 6 p.m.

Sept. 29 at Emporia State . . . . . 2 p.m.

Oct. 6 Missouri-Rolla . . . . . 2 p.m.

Oct. 13 at Southwest Baptist . . . . . 1:30 p.m.

**Oct. 20 Washburn . . . . . 1 p.m.**

Oct. 27 Missouri Southern . . . . . 1 p.m.

Nov. 3 at Northwest Missouri . . . . . 1 p.m.

Nov. 10 Truman . . . . . 1 p.m.

## 2000 RESULTS (8-4)

Aug. 31 South Dakota . . . . . L 13-17

Sept. 9 at Fort Hays State . . . . . L 15-23

Sept. 16 Missouri-Rolla . . . . . W 63-0

**Sept. 23 at Washburn . . . . . W 23-13**

Sept. 30 Pittsburg State . . . . . W 17-7

Oct. 7 at Northwest Missouri . . . . . L 27-46

Oct. 14 Truman . . . . . W 20-19

Oct. 21 at Central Missouri . . . . . WOT 23-16

Oct. 28 at Missouri Southern . . . . . W 28-21

Nov. 4 Emporia State . . . . . W 28-27

Nov. 11 at Southwest Baptist . . . . . W 53-26

Dec. 2 vs Winona State . . . . . L3OT 41-43



**EMPORIA STATE UNIVERSITY**

OCTOBER 27, 2001 • 2 P.M. • WELCH STADIUM • EMPORIA, KAN.

**GENERAL**

**Location:** Emporia, Kan.  
**Founded:** 1863  
**Enrollment:** 5,616  
**Affiliation:** NCAA II  
**Conference:** Mid-America Intercollegiate  
**Nickname:** Hornets  
**Colors:** Old Gold and Black  
**President:** Dr. Kay Schallenkamp  
**Director of Athletics:** Kent Weiser  
**Football SID:** Don Weast  
**E-mail:** weastdon@esumail.emporia.edu  
**Phone:** 620.341.5526  
**Fax:** 620.341.5808  
**Press Box Phone:** 620.341.5020



Dave Wiemers



Dontaye McCoy

**FOOTBALL**

**Head Coach:** Dave Wiemers  
 Alma Mater: Washburn - 1990  
 Record at ESU: First year  
 Overall Record: First year  
 Phone: 620.341.5504  
**Assistant Coaches:** Todd Hafner, Clayt Birmingham, Jon Wiemers, Chet Pobolish, Larry Wiemers, Kenny Wilhite  
**2000 Record:** 6-5  
**MIAA Record, Finish:** 5-4, T4th  
**Basic Formations:** Multiple • 4-4  
**Lettermen:** Returning-43 • Lost-15  
**Returning Starters:** Offense-7 • Defense-8 • Specialty-1

**SERIES NOTES**

**Series Record:** ESU leads 49-42-6  
**First meeting:** ESU 11, WU 0 • 1899  
**Last meeting:** ESU 35, WU 21 • 2000  
**Last WU win:** 59-46 in 1988  
**Last ESU win:** 35-21 in 2000  
**Largest WU win:** 34-6 in 1956  
**Largest ESU win:** 45-6 in 1928

**2001 SCHEDULE**

Aug. 30 at Fort Hays State . . . . . 7 p.m.  
 Sept. 8 East Central (OK) . . . . . 7 p.m.  
 Sept. 15 at Truman . . . . . 1:30 p.m.  
 Sept. 22 Central Missouri . . . . . 7 p.m.  
 Sept. 29 Missouri Western . . . . . 2 p.m.  
 Oct. 6 at Pittsburg State . . . . . 2 p.m.  
 Oct. 13 Missouri-Rolla . . . . . 2 p.m.  
 Oct. 20 at Southwest Baptist . . . . . 2 p.m.  
 Oct. 27 Washburn . . . . . 2 p.m.  
 Nov. 3 Missouri Southern . . . . . 2 p.m.  
 Nov. 10 at Northwest Missouri . . . . . 1 p.m.

**2000 RESULTS (6-5)**

Aug. 31 Fort Hays State . . . . . L 10-16  
 Sept. 9 at East Central Okla. . . . . W 31-14  
 Sept. 16 at Central Missouri . . . . . L 21-34  
 Sept. 23 Missouri Southern . . . . . W 24-0  
 Sept. 30 Missouri-Rolla . . . . . W 49-7  
 Oct. 7 at Southwest Baptist . . . . . W 34-13  
 Oct. 14 Pittsburg State . . . . . L 0-21  
 Oct. 21 at Northwest Missouri . . . . . L 62-7  
 Oct. 28 Truman . . . . . W 55-20  
 Nov. 4 at Missouri Western . . . . . L 27-28  
**Nov. 11 at Washburn . . . . . W 35-21**

**UNIVERSITY OF MISSOURI-ROLLA**

NOVEMBER 3, 2001 • 1 P.M. • MOORE BOWL • TOPEKA, KANSAS

**GENERAL**

**Location:** Rolla, Mo.  
**Founded:** 1870  
**Enrollment:** 4,393  
**Affiliation:** NCAA II  
**Conference:** Mid-America Intercollegiate  
**Nickname:** Miners  
**Colors:** Silver and Gold  
**Chancellor:** Dr. Gary Thomas  
**Director of Athletics:** Mark Mullin  
**Football SID:** John Kean  
**E-mail:** jkean@umr.edu  
**Phone:** 573.341.4140  
**Fax:** 573.341.4880  
**Press Box Phone:** 573.341.4057



Kirby Cannon



Ken Okwuonu

**FOOTBALL**

**Head Coach:** Kirby Cannon  
 Alma Mater: Southwest Missouri-1981  
 Record at UMR: 2-20, 2 years  
 Overall Record: Same  
 Phone: 573.341.4957  
**Assistant Coaches:** Shawn Corbett, Travis Boulware, Jason Koltz, Joe Pfankuch  
**2000 Record:** 2-9  
**MIAA Record, Finish:** 0-9, 10th  
**Basic Formations:** Multiple I • 4-3  
**Lettermen:** Returning-36 • Lost-17  
**Returning Starters:** Offense-5 • Defense-8 • Specialty-2

**SERIES NOTES**

**Series Record:** WU leads 7-5  
**First meeting:** UMR 20, WU 7 • 1989  
**Last meeting:** WU 34, UMR 14 • 2000  
**Last WU win:** 34-14 in 2000  
**Last UMR win:** 19-0 in 1994  
**Largest WU win:** 45-0 in 1996  
**Largest UMR win:** 38-14 in 1993

**2001 SCHEDULE**

Sept. 1 Quincy . . . . . 6:30 p.m.  
 Sept. 8 at Kentucky Wesleyan 1:30 p.m.  
 Sept. 15 Northwest Missouri . . . . . 6:30 p.m.  
 Sept. 22 at Truman . . . . . 2 p.m.  
 Sept. 29 Central Missouri . . . . . 1 p.m.  
 Oct. 6 at Missouri Western . . . . . 2 p.m.  
 Oct. 13 at Emporia State . . . . . 2 p.m.  
 Oct. 20 Pittsburg State . . . . . 1 p.m.  
 Oct. 27 Southwest Baptist . . . . . 6:30 p.m.  
**Nov. 3 at Washburn . . . . . 1 p.m.**  
 Nov. 10 Missouri Southern . . . . . 2 p.m.

**2000 RESULTS (2-9)**

Sept. 2 Kentucky Wesleyan . . . . . W 35-28  
 Sept. 9 at Missouri Valley . . . . . W 22-20  
 Sept. 16 at Missouri Western . . . . . L 0-63  
 Sept. 23 Truman . . . . . L 0-49  
 Sept. 30 at Emporia State . . . . . L 7-49  
**Oct. 7 Washburn . . . . . L 14-34**  
 Oct. 14 Central Missouri . . . . . L 7-33  
 Oct. 21 at Southwest Baptist. LOT 32-35  
 Oct. 28 Pittsburg State . . . . . L 10-52  
 Nov. 4 at Northwest Missouri . . . . . L 7-70  
 Nov. 11 Missouri Southern . . . . . L 7-20

**SOUTHWEST BAPTIST UNIVERSITY**

NOVEMBER 10, 2001 • 1 P.M. • SENIOR DAY • MOORE BOWL • TOPEKA, KAN.

**GENERAL**

**Location:** Bolivar, Mo.  
**Founded:** 1878  
**Enrollment:** 3,000  
**Affiliation:** NCAA II  
**Conference:** Mid-America Intercollegiate  
**Nickname:** Bearcats  
**Colors:** Purple and White  
**President:** Dr. C. Pat Taylor  
**Director of Athletics:** Dennis Roland  
**Football SID:** Joey Roberts  
**E-mail:** jrrobert@sbniv.edu  
**Phone:** 417.328.1799  
**Fax:** 417.328.1745  
**Press Box Phone:** 417.328.1738



Ray Richards

**FOOTBALL**

**Head Coach:** Ray Richards  
 Alma Mater: Northern Michigan 1981  
 Record at SBU: first season  
 Overall Record: first season  
 Phone: 417.328.1787  
**Assistant Coaches:** Tony Hatmaker, Jonathan Polson, Ray Caldwell, Danny White, Ryan McCallum, Rick Scholten  
**2000 Record:** 2-9  
**MIAA Record, Finish:** 1-8, 9th  
**Basic Formations:** Multiple I • 4-3  
**Lettermen:** Returning-32 • Lost-30  
**Returning Starters:** Offense-5 • Defense-4 • Specialty-0

**SERIES NOTES**

**Series Record:** WU leads 9-3  
**First meeting:** SBU 34, WU 19 • 1989  
**Last meeting:** WU 58, SBU 21 • 2000  
**Last WU win:** 58-21 in 2000  
**Last SBU win:** 26-20 OT in 1998  
**Largest WU win:** 58-21 in 2000  
**Largest SBU win:** 34-19 in 1989

**2001 SCHEDULE**

Aug. 25 Quincy . . . . . 7 p.m.  
 Sept. 1 at Kentucky Wesleyan . . . . . 6 p.m.  
 Sept. 13 Missouri Southern . . . . . 7 p.m.  
 Sept. 22 at Northwest Missouri 1:30 p.m.  
 Sept. 29 Truman . . . . . 1:30 p.m.  
 Oct. 6 at Central Missouri . . . . . 2 p.m.  
 Oct. 13 Missouri Western . . . . . 1:30 p.m.  
 Oct. 20 Emporia State . . . . . 2 p.m.  
 Oct. 27 at Missouri-Rolla . . . . . 6:30 p.m.  
 Nov. 3 Pittsburg State . . . . . 1:30 p.m.  
**Nov. 10 at Washburn . . . . . 1 p.m.**

**2000 RESULTS (2-9)**

Sept. 2 Quincy . . . . . W 37-0  
 Sept. 9 at Central Arkansas . . . . . L 7-23  
 Sept. 16 at Truman . . . . . L 14-64  
 Sept. 23 Northwest Missouri . . . . . L 10-65  
 Sept. 30 at Missouri Southern . . . . . L 14-41  
 Oct. 7 Emporia State . . . . . L 13-34  
**Oct. 14 at Washburn . . . . . L 21-58**  
 Oct. 21 Missouri-Rolla . . . . . WOT 35-32  
 Oct. 28 at Central Missouri . . . . . L 10-41  
 Nov. 4 at Pittsburg State . . . . . L 7-69  
 Nov. 11 Missouri Western . . . . . L 26-53

**2001 MIAA COMPOSITE SCHEDULE**

**Saturday, August 25**  
 Quincy (Ill.) @ SBU, 7 p.m.  
 Southwestern Assemblies of God (Texas) @ PSU (HOF), 7 p.m.

**Thursday, August 30**  
 ESU @ Fort Hays (Kan.) State, 7 p.m.  
 Lincoln (Mo.) @ CMSU, 7 p.m.  
 NWMSU @ Nebraska-Omaha, 7 p.m.

**Saturday, September 1**  
**WU @ Wisconsin-LaCrosse, 1 p.m.**  
 Drake (Iowa) @ TSU, 1:30 p.m.  
 SBU @ Kentucky Wesleyan, 6 p.m.  
 Quincy (Ill.) @ UMR, 6:30 p.m.  
 MWSC @ Southeastern Oklahoma St., 7 p.m.

**Thursday, September 6**  
 Ottawa (Kan.) @ CMSU, 7 p.m.

**Saturday, September 8**  
 TSU @ Quincy (Ill.), 1 p.m.  
 Minnesota State-Mankato @ NWMSU, 1:30 p.m.  
 UMR @ Kentucky Wesleyan, 1:30 p.m.  
 Fort Hays (Kan.) State @ MWSC, 6 p.m.  
**Lincoln (Mo.) @ WU, 6 p.m.**  
 Bacone (Okla.) @ PSU, 7 p.m.  
 East Central (Okla.) @ ESU, 7 p.m.  
 Northeastern (Okla.) State @ MSSC, 7 p.m.

**Thursday, September 13**  
 \*MSSC @ SBU (tv), 7:08 p.m.

**Saturday, September 15**  
 \*ESU @ TSU (HOF), 1:30 p.m.  
 \*NWMSU @ UMR (HOF), 6:30 p.m.

\*MWSC @ CMSU, 7 p.m.  
**\*WU @ PSU (FD), 7 p.m.**

**Saturday, September 22**  
 \*SBU @ NWMSU (FD), 1:30 p.m.  
 \*UMR @ TSU (FD), 1:30 p.m.  
**\*MSSC @ WU (FD), 6 p.m.**  
 \*PSU @ MWSC (FD), 6 p.m.  
 \*CMSU @ ESU, 7 p.m.

**Saturday, September 29**  
 \*CMSU @ UMR, 1 p.m.  
 \*TSU @ SBU, 1:30 p.m.  
**\*WU @ NWMSU, 1:30 p.m.**  
 \*MWSC @ ESU (FD), 2 p.m.  
 \*PSU @ MSSC, 7 p.m.

**Saturday, October 6**  
 \*ESU @ PSU, 2 p.m.  
**\*TSU @ WU (HC/HOF), 2 p.m.**  
 \*UMR @ MWSC (HC), 2 p.m.  
 \*NWMSU @ MSSC, 7 p.m.  
 \*SBU @ CMSU (FD), 7 p.m.

**Thursday, October 11**  
**\*CMSU @ WU (tv), 7:08 p.m.**

**Saturday, October 13**  
 \*MWSC @ SBU, 1:30 p.m.  
 \*MSSC @ TSU (HC), 2 p.m.  
 \*NWMSU @ PSU (HC), 2 p.m.  
 \*UMR @ ESU (HC), 2 p.m.

**Saturday, October 20**  
 \*PSU @ UMR (FD), 1 p.m.  
**\*WU @ MWSC (HOF), 1 p.m.**  
 \*ESU @ SBU (HC), 1:30 p.m.

\*TSU @ NWMSU (HC), 2 p.m.  
 \*CMSU @ MSSC, 7 p.m.

**Thursday, October 25**  
 \*MSSC @ MWSC (tv), 7:08 p.m.

**Saturday, October 27**  
 \*NWMSU @ CMSU (HC), 2 p.m.  
 \*TSU @ PSU, 2 p.m.  
**\*WU @ ESU, 2 p.m.**  
 \*SBU @ UMR (SD), 6:30 p.m.

**Saturday, November 3**  
 \*CMSU @ TSU, 1 p.m.  
 \*MWSC @ NWMSU, 1 p.m.  
**\*UMR @ WU, 1 p.m.**  
 \*PSU @ SBU (SD), 1:30 p.m.  
 \*MSSC @ ESU, 2 p.m.

**Thursday, November 8**  
 \*PSU @ CMSU (tv), 7:08 p.m.

**Saturday, November 10**  
 \*ESU @ NWMSU, 1 p.m.  
**\*SBU @ WU (SD), 1 p.m.**  
 \*TSU @ MWSC, 1 p.m.  
 \*UMR @ MSSC (HC), 2 p.m.

\*=MIAA Game; HC=Homecoming; HOF=Hall of Fame Game; FD=Family Day; SD=Senior Day.  
 tv=Games to be produced and telecast in the Kansas City area by Metro Sports.  
 All times are Central Daylight/Standard.  
 Dates and time are subject to change.



2001 opponent series

**Wisconsin-LaCrosse**  
**WU Leads Series 2-0**  
1999 WU .....27-24  
2000 WU .....26-6

**Lincoln**  
**WU Leads Series 2-0**  
1989 WU .....9-0  
2000 WU .....63-21

**Missouri Southern**  
**MSSC Leads Series 19-11-1**  
1970 Tied .....21-21  
1971 MSSC .....14-10  
1972 MSSC .....14-3  
1973 WU .....9-3  
1974 WU .....35-17  
1975 MSSC .....21-9  
1976 MSSC .....35-21  
1977 MSSC .....38-21  
1978 MSSC .....20-7  
1979 WU .....20-19  
1980 MSSC .....35-9  
1981 MSSC .....12-0  
1982 MSSC .....20-0  
1983 WU .....24-10  
1984 WU .....31-29  
1985 WU .....19-6  
1986 WU .....25-7  
1987 MSSC .....32-14  
1988 WU .....35-23  
1989 MSSC .....23-6  
1990 MSSC .....30-6  
1991 MSSC .....31-6  
1992 MSSC .....44-14  
1993 MSSC .....36-21  
1994 MSSC .....38-16  
1995 MSSC .....25-0  
1996 MSSC .....32-31  
1997 MSSC .....17-14  
1998 WU .....49-37  
1999 WU .....35-28  
2000 WU .....24-22

**Missouri Western**  
**MWSC Leads Series 15-12-2**  
1972 WU .....58-3  
1973 Tied .....13-13  
1974 WU .....37-0  
1975 MWSC .....27-24  
1976 WU .....26-15  
1977 Tied .....7-7  
1978 MWSC .....53-25  
1979 WU .....23-21  
1980 MWSC .....45-14  
1981 MWSC .....52-0  
1982 MWSC .....37-21  
1983 WU .....24-21  
1984 MWSC .....37-21  
1985 MWSC .....13-10  
1986 WU .....21-14  
1987 WU .....31-6\*  
1988 WU .....17-10  
1989 WU .....28-21\*  
1990 WU .....21-10  
1991 MWSC .....35-23  
1992 MWSC .....41-17  
1993 MWSC .....41-10  
1994 MWSC .....60-28  
1995 MWSC .....17-6  
1996 WU .....21-7  
1997 MWSC .....13-12  
1998 WU .....35-27  
1999 MWSC .....42-10

2000 MWSC .....23-13  
\*Later forfeited by WU

**Central Missouri**  
**WU Leads Series 15-15-2**  
1902 WU .....6-0  
1914 WU .....6-0  
1915 WU .....19-7  
1943 Tied .....0-0  
1944 WU .....12-2  
1945 WU .....25-0  
1960 CMSU .....35-14  
1961 WU .....27-15  
1962 WU .....20-0  
1963 WU .....34-0\*  
1964 WU .....31-0  
1965 Tied .....7-7  
1966 CMSU .....38-7  
1967 CMSU .....14-0  
1968 CMSU .....34-0  
1969 CMSU .....17-0  
1985 WU .....31-3  
1986 WU .....37-14  
1987 CMSU .....26-17  
1988 WU .....28-27  
1989 CMSU .....29-7  
1990 CMSU .....24-7  
1991 CMSU .....21-0  
1992 WU .....13-10  
1993 CMSU .....41-19  
1994 CMSU .....43-10  
1995 WU .....37-21  
1996 WU .....23-7  
1997 CMSU .....20-14  
1998 CMSU .....37-0  
1999 CMSU .....32-18  
2000 CMSU .....28-17

**Missouri-Rolla**  
**WU Leads Series 7-5**  
1989 UMR .....20-7  
1990 WU .....13-7  
1991 UMR .....28-13  
1992 UMR .....26-21  
1993 UMR .....38-14  
1994 UMR .....19-0  
1995 WU .....21-10  
1996 WU .....45-0  
1997 WU .....27-13  
1998 WU .....24-7  
1999 WU .....53-18  
2000 WU .....34-14

**Southwest Baptist**  
**WU Leads Series 9-3-0**  
1989 SBU .....34-19  
1990 WU .....24-9  
1991 WU .....14-6  
1992 WU .....21-17  
1993 SBU .....25-20  
1994 WU .....31-14  
1995 WU .....37-20  
1996 WU .....24-20  
1997 WU .....25-7  
1998 SBU .....26-20  
1999 WU .....36-0  
2000 WU .....58-21

**Pittsburg State**  
**PSU Leads Series 54-18-1**  
1920 WU .....7-0\*  
1921 PSU .....21-7

1922 PSU .....6-0  
1923 PSU .....10-0  
1924 PSU .....20-0  
1928 WU .....12-0  
1929 WU .....12-7+  
1930 WU .....13-7  
1931 WU .....15-0  
1932 WU .....27-7+  
1933 WU .....6-0  
1934 PSU .....18-13  
1941 Tied .....7-7  
1942 PSU .....19-0  
1943 PSU .....27-7  
1943 PSU .....39-0  
1944 PSU .....26-6  
1946 WU .....12-7  
1947 WU .....13-12  
1948 WU .....25-7  
1949 WU .....27-19  
1950 PSU .....39-6  
1951 PSU .....23-0  
1952 PSU .....17-7  
1953 WU .....36-13  
1954 WU .....13-12  
1955 PSU .....12-7  
1956 PSU .....27-0  
1957 PSU .....21-6  
1958 PSU .....13-7  
1959 PSU .....26-6  
1960 PSU .....27-6  
1961 PSU .....40-0  
1962 PSU .....27-0  
1963 PSU .....21-20  
1964 WU .....17-7+  
1965 PSU .....20-7  
1966 PSU .....24-20  
1967 PSU .....38-12  
1968 PSU .....14-0  
1969 WU .....19-17  
1970 PSU .....13-7  
1971 PSU .....27-0  
1972 PSU .....21-7  
1973 PSU .....21-14  
1974 PSU .....15-14  
1975 PSU .....20-16  
1976 WU .....28-16  
1977 WU .....28-21  
1978 PSU .....14-27#  
1979 PSU .....46-12  
1980 WU .....38-36  
1981 PSU .....35-12  
1982 PSU .....38-14  
1983 PSU .....29-21  
1984 PSU .....21-20  
1985 PSU .....35-18  
1986 PSU .....21-7  
1986 PSU .....58-24  
1987 PSU .....44-0  
1988 PSU .....23-14  
1989 PSU .....61-0  
1990 PSU .....17-0  
1991 PSU .....21-0  
1992 PSU .....48-29  
1993 PSU .....55-18  
1994 PSU .....62-13  
1995 PSU .....31-7  
1996 PSU .....43-14  
1997 PSU .....40-11  
1998 PSU .....72-12  
1999 PSU .....27-8  
2000 PSU .....31-28  
+PSU records reflect different score  
\*Later forfeited by WU  
#Later forfeited by PSU

**Northwest Missouri**  
**NWMSU Leads Series 14-5-0**  
1944 NWMSU .....27-0  
1944 NWMSU .....28-0  
1984 NWMSU .....47-0  
1985 WU .....38-24  
1986 WU .....38-24  
1987 NWMSU .....29-27  
1988 WU .....33-12  
1989 NWMSU .....34-21  
1990 WU .....14-0  
1991 NWMSU .....29-3  
1992 NWMSU .....22-21  
1993 NWMSU .....61-36  
1994 WU .....48-14  
1995 NWMSU .....42-21  
1996 NWMSU .....33-14  
1997 NWMSU .....17-14  
1998 NWMSU .....38-31  
1999 NWMSU .....35-10  
2000 NWMSU .....63-21

**Truman**  
**TSU Leads Series 15-3-0**  
1958 TSU .....26-13  
1959 TSU .....6-0  
1960 TSU .....39-12  
1961 TSU .....27-9  
1962 TSU .....39-0  
1963 WU .....7-6\*  
1989 WU .....21-3\*  
1990 TSU .....44-17  
1991 TSU .....14-7  
1992 TSU .....42-8  
1993 TSU .....34-0  
1994 TSU .....50-31  
1995 TSU .....41-17  
1996 TSU .....38-21  
1997 TSU .....37-7  
1998 TSU .....38-28  
1999 WU .....52-18  
2000 TSU .....45-42  
\*Later forfeited by WU

**Emporia State**  
**ESU Leads Series 49-42-6**  
1899 ESU .....11-0  
1901 WU .....6-0  
1902 WU .....6-0  
1903 Tied .....0-0  
1904 WU .....21-0  
1905 WU .....29-6  
1906 WU .....6-0  
1907 WU .....18-0  
1908 WU .....6-0  
1909 WU .....24-6  
1910 ESU .....14-12  
1911 WU .....8-0  
1912 ESU .....7-6  
1913 WU .....41-7  
1914 ESU .....19-0  
1915 Tied .....7-7  
1916 ESU .....23-7  
1917 Tied .....0-0  
1918 WU .....22-3  
1919 WU .....20-6  
1920 Tied .....7-7  
1921 WU .....10-7+  
1922 ESU .....34-0  
1923 Tied .....7-7  
1924 ESU .....18-0  
1925 ESU .....6-0  
1926 ESU .....35-0

1927 ESU .....20-7  
1928 ESU .....45-6  
1929 WU .....6-2  
1930 WU .....13-6  
1931 WU .....20-7  
1932 Tied .....0-0  
1933 ESU .....7-6  
1934 ESU .....14-6  
1935 WU .....12-7  
1936 ESU .....14-7  
1937 ESU .....12-6  
1938 WU .....19-6  
1939 WU .....12-0  
1940 ESU .....38-7  
1941 ESU .....20-12  
1942 ESU .....12-0  
1946 WU .....20-12  
1947 ESU .....12-6  
1948 ESU .....7-0  
1949 ESU .....19-14  
1950 ESU .....27-19  
1951 WU .....14-13  
1952 ESU .....7-6  
1953 WU .....21-0  
1954 WU .....14-6  
1955 WU .....26-6  
1956 WU .....34-6  
1957 WU .....25-0  
1958 ESU .....27-6  
1959 ESU .....24-13  
1960 ESU .....7-6  
1961 ESU .....26-10  
1962 WU .....7-6  
1963 WU .....32-6  
1964 WU .....19-6  
1965 WU .....21-0  
1966 ESU .....14-0  
1966 ESU .....12-6  
1967 ESU .....34-7  
1968 ESU .....47-19  
1969 ESU .....28-14  
1970 WU .....34-21  
1971 ESU .....3-0  
1972 ESU .....41-7  
1973 WU .....20-10  
1974 WU .....36-15  
1975 WU .....42-13  
1976 WU .....21-0  
1977 WU .....40-12  
1978 WU .....17-7  
1979 ESU .....17-11  
1980 ESU .....45-7  
1981 WU .....17-10  
1982 ESU .....20-13  
1983 WU .....41-7  
1984 ESU .....14-0  
1985 WU .....25-18  
1986 ESU .....22-16  
1987 WU .....28-21\*  
1988 WU .....59-46  
1991 ESU .....49-18  
1992 ESU .....25-18  
1993 ESU .....37-19  
1994 ESU .....43-7  
1995 ESU .....25-24  
1996 ESU .....40-35  
1997 ESU .....64-35  
1998 ESU .....35-27  
1999 ESU .....45-20  
2000 ESU .....35-21  
+ESU records reflect different score  
\*Later forfeited by WU