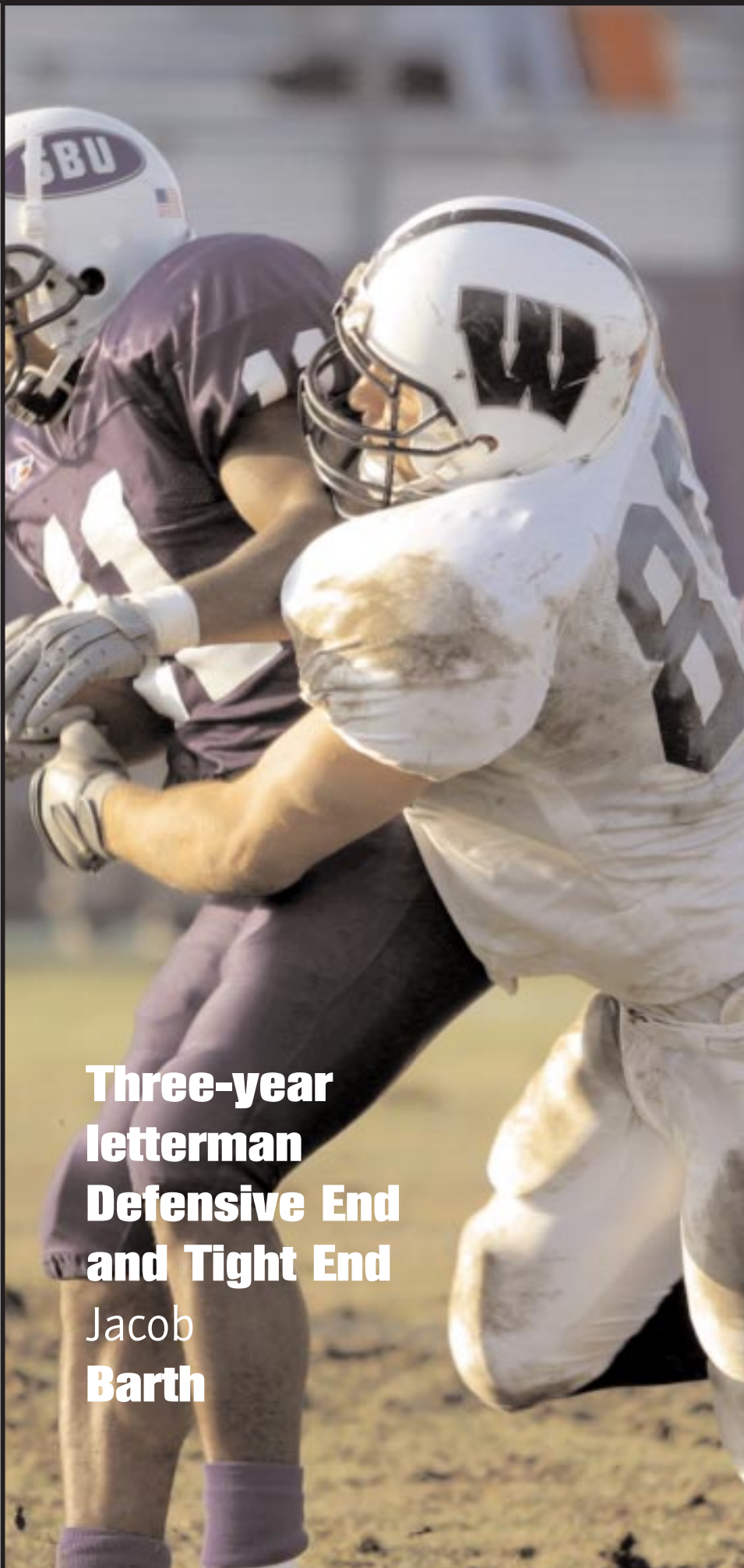


# 2003 OPPONENTS



**Three-year  
letterman  
Defensive End  
and Tight End  
Jacob  
Barth**



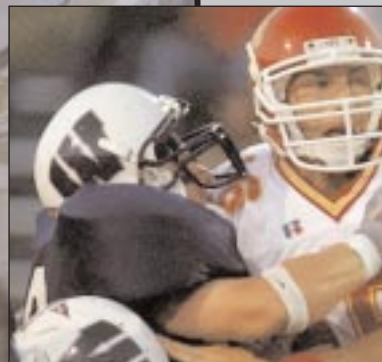
Cason  
**Lehman**



Grant  
**Gould**



Chris  
**Huelsman**



Morgan  
**Dewey**



Darold  
**Smith**

Washburn Football

# LANGSTON UNIVERSITY

Game 1 • Sept. 6 at Guthrie, Okla. (Anderson Stadium) • 7 p.m.



**Harold Johnson**  
Head Coach



**Freddie Fair**  
Quarterback



## Series History - Washburn leads 1-0

|                            |                       |
|----------------------------|-----------------------|
| <b>First meeting</b>       | <b>Last LU win</b>    |
| WU 37, Langston 32 in 1977 | N/A                   |
| <b>Last meeting</b>        | <b>Largest WU win</b> |
| WU 37, Langston 32 in 1977 | 37-32 in 1977         |
| <b>Last WU win</b>         | <b>Largest LU win</b> |
| 37-32 in 1977              | N/A                   |

## Series Notes

- The Ichabods won the only meeting in the series on Sept. 10, 1977 37-32 in Moore Bowl.
- It was the first game of the 1977 season.

## Last 10 Meetings

for series history, turn to page 62

| Date    | Site   | Score   | Date | Site | Score |
|---------|--------|---------|------|------|-------|
| 9.10.77 | Topeka | W 37-32 |      |      |       |

## 2003 SCHEDULE

|                |                                 |               |
|----------------|---------------------------------|---------------|
| <b>Sept. 6</b> | <b>Washburn</b> . . . . .       | <b>7 p.m.</b> |
| Sept. 11       | at Central Missouri . . . . .   | 7 p.m.        |
| Sept. 20       | Texas College . . . . .         | 7 p.m.        |
| Sept. 27       | at Southern Nazarene . . . . .  | 6 p.m.        |
| Oct. 4         | at Lincoln . . . . .            | 1 p.m.        |
| Oct. 11        | SW Assemblies of God . . . . .  | 1 p.m.        |
| Oct. 18        | at Northwestern State . . . . . | 1 p.m.        |
| Nov. 1         | at Bacone . . . . .             | 1 p.m.        |
| Nov. 8         | at Panhandle State . . . . .    | 1 p.m.        |
| Nov. 15        | Haskell . . . . .               | 2 p.m.        |

## 2002 RESULTS (2-9)

|          |                                 |         |
|----------|---------------------------------|---------|
| Aug. 31  | at Pittsburg State . . . . .    | L 0-48  |
| Sept. 7  | Paul Quinn . . . . .            | L 26-28 |
| Sept. 14 | at Central Arkansas . . . . .   | L 0-47  |
| Sept. 21 | Southern Nazarene . . . . .     | L 19-24 |
| Sept. 28 | at Grambling State . . . . .    | L 30-37 |
| Oct. 5   | at Haskell . . . . .            | W 14-0  |
| Oct. 12  | Northwestern Oklahoma . . . . . | L 14-35 |
| Oct. 19  | Bacone . . . . .                | L 21-23 |
| Oct. 26  | Lincoln . . . . .               | L 13-34 |
| Nov. 2   | at Peru State . . . . .         | W 20-13 |
| Nov. 9   | Hastings . . . . .              | L 12-35 |



## General Information

**Location:** Langston, Okla.

**Founded:** 1897

**Enrollment:** 2,500

**Affiliation:** NAIA I

**Conference:** Central States

**Nickname:** Lions

**Colors:** Orange and Navy Blue

**President:** Dr. E.L. Holloway

**Director of Athletics:** John W. Montgomery II

## Coaching Staff

**Head Coach:** Harold E. Johnson

Alma Mater: Northern Colorado, 1976

Record at LU: 2-9, 1 season

Overall Record: same

Phone: 405.466.3353

## Assistant Coaches:

Shaun Johnson

Dan Davis

Clayton Roles

Anthony Lyons

**2002 Record:** 2-9

**CSFL Record, Finish:** 2-2, 3rd

**Basic Formation:** Multiple • 4-3

**Lettermen:** Returning-26 • Lost 22

**Returning Starters:** Offense-4 • Defense-7

## Sports Information

**Football SID:** James Hilliard, Jr.

**E-mail:** jwhilliard@lunet.edu

**Phone:** 405.466.3243

**Fax:** 405.466.3271

**Athletic Web Site:**

www.lunet.edu/sports/lu\_athletics

## Ichabod Travel Plans

**Leave:** Sept. 6 at 10 a.m. with pre-game meal in Wichita, Kan.

**Return:** Following game

# FORT HAYS STATE UNIVERSITY

Game 2 • Sept. 13 at Topeka (Yager Stadium) • 6 p.m.



**Tim  
O'Connor**  
Head Coach



**Andre  
Freeman**  
Wide Receiver



## Series History - Washburn leads 34-22-3

|   |   |
|---|---|
| <b>First meeting</b><br>WU 7, FHSU 6 in 1919  | <b>Last FHSU win</b><br>37-29 in 2002   |
| <b>Last meeting</b><br>FHSU 37, WU 29 in 2002 | <b>Largest WU win</b><br>46-0 in 1963   |
| <b>Last WU win</b><br>17-14 in 1999           | <b>Largest FHSU win</b><br>35-0 in 1967 |

## Series Notes

- The two teams have traded wins the last seven meetings with the Ichabods winning on Nov. 7, 1987.
- The home team has won seven of the last 10 meetings.
- The win on Sept. 11, 1999 was the Ichabods' home opener.

## Last 10 Meetings

for series history, turn to page 62

| Date    | Site   | Score   | Date     | Site   | Score   |
|---------|--------|---------|----------|--------|---------|
| 9.14.02 | Hays   | L 29-37 | 11.5.89  | Hays   | L 14-22 |
| 9.11.99 | Topeka | W 17-14 | 11.7.87  | Topeka | W 49-12 |
| 9.12.98 | Hays   | L 12-24 | 10.25.86 | Hays   | W 40-35 |
| 9.13.97 | Topeka | W 31-14 | 10.26.85 | Topeka | L 0-30  |
| 9.14.96 | Hays   | L 6-21  | 10.20.84 | Hays   | W 26-14 |

## 2003 SCHEDULE

|                 |                               |               |
|-----------------|-------------------------------|---------------|
| Sept. 6         | Emporia State . . . . .       | 7 p.m.        |
| <b>Sept. 13</b> | <b>at Washburn . . . . .</b>  | <b>6 p.m.</b> |
| Sept. 20        | at Chadron State . . . . .    | 2 p.m.        |
| Sept. 27        | Adams State . . . . .         | 7 p.m.        |
| Oct. 4          | Colorado-Mines . . . . .      | 2 p.m.        |
| Oct. 11         | at Fort Lewis College . . . . | 2 p.m.        |
| Oct. 18         | Oklahoma Panhandle . . . .    | 2 p.m.        |
| Oct. 25         | at Mesa State . . . . .       | 2 p.m.        |
| Nov. 1          | Nebraska-Kearney . . . . .    | 2 p.m.        |
| Nov. 8          | Western State . . . . .       | 1 p.m.        |
| Nov. 15         | at New Mexico Highlands       | 2 p.m.        |

## 2002 RESULTS (5-6)

|                 |                             |                |
|-----------------|-----------------------------|----------------|
| Sept. 5         | at Emporia State . . . . .  | L 7-38         |
| <b>Sept. 14</b> | <b>Washburn . . . . .</b>   | <b>W 37-29</b> |
| Sept. 21        | Chadron State . . . . .     | L 23-52        |
| Sept. 28        | at Adams State . . . . .    | L 6-30         |
| Oct. 5          | at Colorado-Mines . . . . . | L 27-42        |
| Oct. 12         | Fort Lewis College . . . .  | W 58-27        |
| Oct. 19         | at Okla. Panhandle . . . .  | W 49-32        |
| Oct. 26         | Mesa State . . . . .        | W 20-16        |
| Nov. 2          | at Nebraska-Kearney . . . . | L 29-46        |
| Nov. 9          | at Western State . . . . .  | L 7-34         |
| Nov. 16         | New Mexico Highlands        | W 37-27        |



## General Information

**Location:** Hays, Kan.  
**Founded:** 1902  
**Enrollment:** 6,000  
**Affiliation:** NCAA II  
**Conference:** Rocky Mountain  
**Nickname:** Tigers  
**Colors:** Black & Gold  
**President:** Dr. Edward H. Hammond  
**Director of Athletics:** Tom Spicer

## Coaching Staff

**Head Coach:** Tim O'Connor  
 Alma Mater: Boise State, 1991  
 Record at FHSU: 8-14, 2 seasons  
 Overall Record: 8-14, 2 seasons  
 Phone: 785.628.4399

## Assistant Coaches:

Bryan Maring  
 Jeff Walker  
 Jeremy Hawks  
 Mike Norris

**2002 Record:** 5-6

**RMAC Record, Finish:** 3-5, 7th

**Basic Formations:** Pro I • 4-3

**Lettermen:** Returning-38 • Lost-20

**Returning Starters:** Offense-9 •  
 Defense-6 • Specialty-6

## Sports Information

**Football SID:** Jason McCullough

**E-mail:** jmccullo@fhsu.edu

**Phone:** 785.628.5800

**Fax:** 785.628.4383

**Press Box Phone:** 785.628.5800  
 or 785.628.5316

**Athletic Web Site:**

www.tigersportszone.com



# EMPORIA STATE UNIVERSITY

Game 3 • Sept. 20 at Emporia (Welch Stadium) • 2 p.m.



**Dave  
Wiemers**  
Head Coach



**Tyler  
Paul**  
Running Back



## Series History - ESU leads 50-43-6

|  |  |
|--|--|
| <b>First meeting</b><br>ESU 11, WU 0 in 1899 | <b>Last ESU win</b><br>39-18 in 2001   |
| <b>Last meeting</b><br>WU 34, ESU 21 in 2002 | <b>Largest WU win</b><br>34-21 in 2002 |
| <b>Last WU win</b><br>34-21 in 2002          | <b>Largest ESU win</b><br>45-6 in 1928 |

## Series Notes

- This season's game will be the 100th in the series.
- It is the third longest Division II series in Division II history behind North Dakota and North Dakota State (110) and South Dakota and South Dakota State (103).
- The teams have played every year since 1899 with the exception of 1943 through 1945 for WWII.

## Last 10 Meetings

for series history, turn to page 62

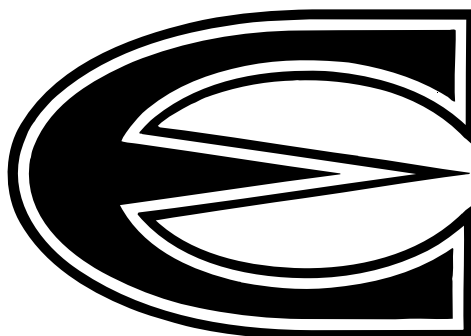
| Date     | Site    | Score   | Date     | Site    | Score   |
|----------|---------|---------|----------|---------|---------|
| 11.2.02  | Topeka  | W 34-21 | 10.30.97 | Emporia | L 35-64 |
| 10.27.01 | Emporia | L 19-38 | 10.5.96  | Topeka  | L 35-40 |
| 11.11.00 | Topeka  | L 21-35 | 9.30.95  | Emporia | L 24-25 |
| 11.20.99 | Emporia | L 20-45 | 11.5.94  | Topeka  | L 7-43  |
| 10.29.98 | Topeka  | L 27-35 | 11.6.93  | Emporia | L 19-37 |

## 2003 SCHEDULE

|                 |                      |                     |
|-----------------|----------------------|---------------------|
| Sept. 6         | at Fort Hays State   | ..... 7 p.m.        |
| Sept. 13        | East Central         | ..... 7 p.m.        |
| <b>Sept. 20</b> | <b>Washburn</b>      | <b>..... 2 p.m.</b> |
| Sept. 27        | Missouri Western     | ..... 2 p.m.        |
| Oct. 4          | at Truman            | ..... 2 p.m.        |
| Oct. 11         | Northwest Missouri   | ..... 2 p.m.        |
| Oct. 18         | at Pittsburg State   | ..... 2 p.m.        |
| Oct. 25         | Southwest Baptist    | ..... 2 p.m.        |
| Nov. 1          | at Missouri-Rolla    | ..... 1 p.m.        |
| Nov. 8          | at Missouri Southern | .... 2 p.m.         |
| Nov. 15         | Central Missouri     | ..... 2 p.m.        |

## 2002 RESULTS (9-3)

|               |                      |                      |
|---------------|----------------------|----------------------|
| Sept. 5       | Fort Hays State      | ..... W 38-7         |
| Sept. 14      | at East Central (OK) | ..... W 17-9         |
| Sept. 21      | Truman               | ..... W 34-17        |
| Sept. 28      | at Central Missouri  | ..... L 13-41        |
| Oct. 5        | at Missouri Western  | .... W 21-14         |
| Oct. 12       | Pittsburg State      | ..... W 13-3         |
| Oct. 19       | at Missouri-Rolla    | ..... W 40-7         |
| Oct. 26       | Southwest Baptist    | ..... W 21-13        |
| <b>Nov. 2</b> | <b>at Washburn</b>   | <b>..... L 21-34</b> |
| Nov. 9        | at Missouri Southern | .... W 47-16         |
| Nov. 16       | Northwest Missouri   | ..... L 5-34         |
| Dec. 7        | vs Winona State      | .... W OT 34-27      |



## General Information

**Location:** Emporia, Kan.  
**Founded:** 1863  
**Enrollment:** 6,005  
**Affiliation:** NCAA II  
**Conference:** MIAA  
**Nickname:** Hornets  
**Colors:** Old Gold and Black  
**President:** Dr. Kay Schallenkamp  
**Director of Athletics:** Kent Weiser

## Coaching Staff

**Head Coach:** Dave Wiemers  
 Alma Mater: Washburn, 1990  
 Record at ESU: 14-9, 2 seasons  
 Overall Record: 14-9, 2 seasons  
 Phone: 620-341-5504

### Assistant Coaches:

Todd Hafner  
 Clayt Birminham  
 Chet Pobolish  
 Jon Wiemers  
 Kenny Wilhite  
 Larry Wiemers

**2002 Record:** 9-3

**MIAA Record, Finish:** 6-3, 3rd

**Basic Formations:** Multiple • 4-4

**Lettermen:** Returning-44 • Lost-13

**Returning Starters:** Offense-10 •  
 Defense-5 • Specialty-2

## Sports Information

**Football SID:** Don Weast  
**E-mail:** weastdon@esumail.emporia.edu  
**Phone:** 620.341.5526  
**Fax:** 620.341.5808  
**Press Box Phone:** 620.341.5020  
**Athletic Web Site:**  
[www.emporia.edu/athletics](http://www.emporia.edu/athletics)

## Ichabod Travel Plans

**Leave:** Sept. 20 at 10 a.m.  
**Return:** Following game

# TRUMAN STATE UNIVERSITY

Game 4 • Sept. 27 at Topeka (Yager Stadium) • 1 p.m.



**John  
Ware**

Head Coach



**Derek  
Kent**

Fullback



## Series History - TSU leads 16-4

**First meeting**  
TSU 26, WU 13 in 1958  
**Last meeting**  
WU 26, TSU 21 in 2002  
**Last WU win**  
26-21 in 2002

**Last TSU win**  
27-26 in 2001  
**Largest WU win**  
52-13 in 1999  
**Largest TSU win**  
39-0 in 1962

## Series Notes

- The Bulldogs have two forfeit wins over the Ichabods.
- In 2002, the Ichabods topped Truman 26-21 for Ichabod head coach Craig Schurig's first win.
- In 2001, Truman's Austin Leeper hit a 47-yard field goal with less than a second left for the win.

## Last 10 Meetings

for series history, turn to page 62

| Date     | Site       | Score   | Date     | Site       | Score   |
|----------|------------|---------|----------|------------|---------|
| 10.12.02 | Kirksville | W 26-21 | 10.11.97 | Topeka     | L 7-37  |
| 10.6.01  | Topeka     | L 26-27 | 9.28.96  | Kirksville | L 21-38 |
| 11.4.00  | Kirksville | L 42-45 | 9.23.95  | Topeka     | L 17-41 |
| 11.13.99 | Topeka     | W 52-18 | 10.15.94 | Kirksville | L 31-50 |
| 10.10.98 | Kirksville | L 28-38 | 10.16.93 | Topeka     | L 0-34  |

## 2003 SCHEDULE

|                 |                       |               |
|-----------------|-----------------------|---------------|
| Sept. 6         | Winona State          | 1:30 p.m.     |
| Sept. 13        | at Illinois State     | 6:30 p.m.     |
| Sept. 20        | Pittsburg State       | 1:30 p.m.     |
| <b>Sept. 27</b> | <b>at Washburn</b>    | <b>1 p.m.</b> |
| Oct. 4          | Emporia State         | 2 p.m.        |
| Oct. 11         | at Missouri Southern  | 2 p.m.        |
| Oct. 18         | Missouri Western      | 2 p.m.        |
| Oct. 25         | at Central Missouri   | 1:30 p.m.     |
| Nov. 1          | at Northwest Missouri | 1 p.m.        |
| Nov. 8          | Missouri-Rolla        | 1 p.m.        |
| Nov. 15         | at Southwest Baptist  | 2 p.m.        |

## 2002 RESULTS (6-5)

|                |                      |                |
|----------------|----------------------|----------------|
| Sept. 7        | at Drake (Iowa)      | W 38-14        |
| Sept. 14       | Quincy (Ill.)        | W 69-14        |
| Sept. 21       | at Emporia State     | L 17-34        |
| Sept. 28       | at Missouri-Rolla    | W 57-28        |
| Sept. 5        | Southwest Baptist    | W 44-32        |
| <b>Oct. 12</b> | <b>Washburn</b>      | <b>L 21-26</b> |
| Oct. 19        | at Missouri Southern | W 28-14        |
| Oct. 26        | Northwest Missouri   | L 24-31        |
| Nov. 2         | Pittsburg State      | L 35-49        |
| Nov. 9         | at Central Missouri  | L 3-17         |
| Nov. 16        | Missouri Western     | W 27-23        |

# T

## General Information

**Location:** Kirksville, Mo.  
**Founded:** 1867  
**Enrollment:** 6,000  
**Affiliation:** NCAA II  
**Conference:** MIAA  
**Nickname:** Bulldogs  
**Colors:** Purple and White  
**President:** Dr. Barbara Dixon  
**Director of Athletics:** Jerry Wollmering

## Coaching Staff

**Head Coach:** John Ware  
Alma Mater: Drake, 1981  
Record at TSU: 50-37, 8 years  
Overall Record: 50-37, 8 years  
Phone: 660.785.4252

## Assistant Coaches:

Matt Copeland  
Matt Nelson  
Jeff Jacques  
Erik Krupke

**2002 Record:** 6-5

**MIAA Record, Finish:** 4-5, T5th

**Basic Formations:** Multiple • 4-2

**Lettermen:** Returning-42 • Lost-14

**Returning Starters:** Offense-5 •  
Defense-8 • Specialty-0

## Sports Information

**Football SID:** Melissa Ware  
**E-mail:** mware@truman.edu  
**Phone:** 660.785.4276  
**Fax:** 660.785.7475  
**Press Box Phone:** 660.785.4276  
**Athletic Web Site:**  
gobulldogs.truman.edu

# NORTHWEST MISSOURI STATE UNIVERSITY

Game 5 • Oct. 5 at Maryville, Mo. (Rickenbrode Stadium) • 1 p.m.



**Mel  
Tjeerdsma**  
Head Coach



**Jamaica  
Rector**  
Wide Receiver



## Series History - NWMSU leads 16-5

|  |  |
|--|--|
| <b>First meeting</b><br>NWMSU 27, WU 0 in 1944 | <b>Last NWMSU win</b><br>48-13 in 2002   |
| <b>Last meeting</b><br>NWMSU 48, WU 13 in 2002 | <b>Largest WU win</b><br>48-14 in 1994   |
| <b>Last WU win</b><br>48-14 in 1994            | <b>Largest NWMSU win</b><br>47-0 in 1984 |

## Series Notes

- The last win for the Ichabods in the series was on Oct. 8, 1994 in Topeka.
- The 1994 win was in Bearcats' head coach Mel Tjeerdsma's first season at Northwest.
- The Ichabods have not won in Maryville since Oct. 20, 1990 in a 14-0 win over the Bearcats.

## Last 10 Meetings

for series history, turn to page 62

| Date     | Site      | Score   | Date    | Site      | Score   |
|----------|-----------|---------|---------|-----------|---------|
| 10.5.02  | Topeka    | L 13-48 | 10.4.97 | Maryville | L 14-17 |
| 9.29.01  | Maryville | L 17-52 | 11.9.96 | Topeka    | L 14-33 |
| 10.28.00 | Topeka    | L 21-63 | 11.4.95 | Maryville | L 21-42 |
| 10.30.99 | Maryville | L 10-35 | 10.8.94 | Topeka    | W 48-14 |
| 10.3.98  | Topeka    | L 31-38 | 10.9.93 | Maryville | L 36-61 |

## 2003 SCHEDULE

|               |                                 |               |
|---------------|---------------------------------|---------------|
| Sept. 6       | at South Dakota State . . . . . | 7 p.m.        |
| Sept. 13      | Minn. St.-Mankato . . . . .     | 1 p.m.        |
| Sept. 20      | Central Missouri . . . . .      | 1 p.m.        |
| Sept. 27      | at Missouri-Rolla . . . . .     | 6:30 p.m.     |
| <b>Oct. 4</b> | <b>Washburn . . . . .</b>       | <b>1 p.m.</b> |
| Oct. 11       | at Emporia State . . . . .      | 2 p.m.        |
| Oct. 18       | Missouri Southern . . . . .     | 1 p.m.        |
| Oct. 25       | at Missouri Western . . . . .   | 1 p.m.        |
| Nov. 1        | Truman State . . . . .          | 1 p.m.        |
| Nov. 8        | Southwest Baptist . . . . .     | 1 p.m.        |
| Nov. 15       | vs. Pittsburg State . . . . .   | 2 p.m.        |

## 2002 RESULTS (12-1)

|               |                                  |                |
|---------------|----------------------------------|----------------|
| Sept. 7       | Nebraska-Omaha . . . . .         | W 23-10        |
| Sept. 14      | at Minn. St.-Mankato . . . . .   | W 42-31        |
| Sept. 21      | Missouri-Rolla . . . . .         | W 34-9         |
| Sept. 28      | at Southwest Baptist . . . . .   | W 28-7         |
| <b>Oct. 5</b> | <b>at Washburn . . . . .</b>     | <b>W 48-13</b> |
| Oct. 12       | Missouri Southern . . . . .      | W 47-3         |
| Oct. 17       | vs Pittsburg State . . . . .     | W 29-7         |
| Oct. 26       | at Truman State . . . . .        | W 31-24        |
| Nov. 2        | Central Missouri State . . . . . | W 10-7         |
| Nov. 9        | at Missouri Western . . . . .    | W 13-10        |
| Nov. 16       | at Emporia State . . . . .       | W 34-5         |
| Nov. 23       | Minnesota-Duluth . . . . .       | W 45-41        |
| Nov. 30       | Northern Colorado . . . . .      | L 12-23        |



## General Information

**Location:** Maryville, Mo.  
**Founded:** 1905  
**Enrollment:** 6,500  
**Affiliation:** NCAA II  
**Conference:** MIAA  
**Nickname:** Bearcats  
**Colors:** Forest Green and White  
**President:** Dr. Dean L. Hubbard  
**Director of Athletics:** Dr. Robert Boerighter

## Coaching Staff

**Head Coach:** Mel Tjeerdsma  
 Alma Mater: Southern State (South Dakota), 1967  
 Record at NWMSU: 88-26, 9 years  
 Overall Record: 158-64-4, 19 years  
 Phone: 660.562.1311

## Assistant Coaches:

Jim Svoboda  
 Scott Bostwick  
 Bart Tatum  
 Jon Gustafson  
 Will Wagner  
**2002 Record:** 12-1  
**MIAA Record, Finish:** 9-0, 1st  
**Basic Formations:** Multiple • 4-3  
**Returning Starters:** Offense-6 • Defense-5 • Specialty-1

## Sports Information

**Football SID:** Andy Seeley  
**E-mail:** nwsid@nwmissouri.edu  
**Phone:** 660.562.1118  
**Fax:** 660.562.1582  
**Press Box Phone:** TBD  
**Athletic Web Site:**  
[www.northwestbearcats.com](http://www.northwestbearcats.com)

## Ichabod Travel Plans

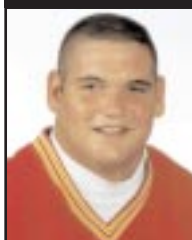
**Leave:** Oct. 4 at 8 a.m.  
**Return:** Following game

# PITTSBURG STATE UNIVERSITY

Game 6 • Oct. 11 at Topeka (Yager Stadium) • 1 p.m.



**Chuck  
Broyles**  
Head Coach



**Aaron  
McConnell**  
Defensive Line



## Series History - PSU leads 56-18-1

|  |  |
|--|--|
| <b>First meeting</b><br>WU 7, PSU 0 in 1920  | <b>Last PSU win</b><br>47-14 in 2002   |
| <b>Last meeting</b><br>PSU 47, WU 14 in 2002 | <b>Largest WU win</b><br>36-13 in 1953 |
| <b>Last WU win</b><br>38-36 in 1980          | <b>Largest PSU win</b><br>61-0 in 1989 |

## Series Notes

- The Ichabods have lost the last 23 meetings in the series.
- The last Washburn win was on Oct. 4, 1980 when the Ichabods won 38-36 in Topeka.
- The Ichabods have been outscored 910 to 277 during the losing streak.

## Last 10 Meetings

for series history, turn to page 62

| Date     | Site      | Score   | Date     | Site      | Score   |
|----------|-----------|---------|----------|-----------|---------|
| 9.21.02  | Topeka    | L 14-47 | 11.15.97 | Topeka    | L 11-40 |
| 9.15.01  | Pittsburg | L 21-51 | 11.2.96  | Pittsburg | L 14-43 |
| 10.21.00 | Pittsburg | L 31-28 | 10.28.95 | Topeka    | L 7-31  |
| 10.23.99 | Topeka    | L 8-27  | 10.1.94  | Pittsburg | L 13-62 |
| 11.14.98 | Pittsburg | L 12-72 | 10.2.93  | Topeka    | L 18-55 |

## 2003 SCHEDULE

|                |                                  |               |
|----------------|----------------------------------|---------------|
| Sept. 6        | Lincoln . . . . .                | 7 p.m.        |
| Sept. 13       | St. Cloud State . . . . .        | 7 p.m.        |
| Sept. 20       | at Truman State . . . . .        | 1:30 p.m.     |
| Sept. 27       | at Southwest Baptist . . . . .   | 2 p.m.        |
| Oct. 4         | Missouri-Rolla . . . . .         | 2 p.m.        |
| <b>Oct. 11</b> | <b>at Washburn . . . . .</b>     | <b>1 p.m.</b> |
| Oct. 18        | Emporia State . . . . .          | 2 p.m.        |
| Oct. 25        | at Missouri Southern . . . . .   | 6 p.m.        |
| Nov. 1         | Missouri Western . . . . .       | 2 p.m.        |
| Nov. 8         | at Central Missouri . . . . .    | 1:30 p.m.     |
| Nov. 15        | vs. Northwest Missouri . . . . . | 2 p.m.        |

## 2002 RESULTS (8-3)

|                 |                                 |                |
|-----------------|---------------------------------|----------------|
| Aug. 31         | Langston (Okla.) . . . . .      | W 48-0         |
| Sept. 14        | Bacone (Okla.) . . . . .        | W 63-3         |
| <b>Sept. 21</b> | <b>at Washburn . . . . .</b>    | <b>W 47-14</b> |
| Sept. 28        | Missouri Western . . . . .      | W 25-21        |
| Oct. 5          | Missouri Southern . . . . .     | W 50-12        |
| Oct. 12         | at Emporia State . . . . .      | L 3-13         |
| Oct. 17         | vs Northwest Missouri . . . . . | L 7-29         |
| Oct. 26         | at Missouri-Rolla . . . . .     | W 48-14        |
| Nov. 2          | Truman . . . . .                | W 49-35        |
| Nov. 9          | at Southwest Baptist . . . . .  | W 48-13        |
| Nov. 16         | at Central Missouri . . . . .   | LOT 20-23      |



## General Information

**Location:** Pittsburg, Kan.

**Founded:** 1903

**Enrollment:** 6,751

**Affiliation:** NCAA II

**Conference:** MIAA

**Nickname:** Gorillas

**Colors:** Crimson and Gold

**President:** Dr. Tom Bryant

**Director of Athletics:** Chuck Broyles

## Coaching Staff

**Head Coach:** Chuck Broyles

Alma Mater: Pittsburg State, 1970

Record at PSU: 131-26-2, 13 years

Overall Record: 131-26-2, 13 years

Phone: 620.235.4389

**Assistant Coaches:**

Tim Beck

Anton Stewart

Lance Cullen

Bill Kroenke

John Pierce

Carl Roth

**2002 Record:** 8-3

**MIAA Record, Finish:** 6-3, T3rd

**Basic Formations:** Double

Tight/Split Back/Veer • 4-4

**Lettermen:** Returning-38 • Lost-11

**Returning Starters:** Offense-8 •  
Defense-6 • Specialty-0

## Sports Information

**Football SID:** Dan Wilkes

**E-mail:** dwilkes@pittstate.edu

**Phone:** 620.235.4147

**Fax:** 620.235.4149

**Press Box Phone:** 620.235.4869

**Athletic Web Site:**

www.pittstate.edu/athletics



# SOUTHWEST BAPTIST UNIVERSITY

Game 7 • Oct. 18 at Bolivar, Mo. (Plaster Stadium) • 2 p.m.



**Ray  
Richards**  
Head Coach



**Marc  
Green**  
Wide Receiver



## Series History - Washburn leads 9-5

|                       |                        |
|-----------------------|------------------------|
| <b>First meeting</b>  | <b>Last SBU win</b>    |
| SBU 34, WU 19 in 1989 | 26-20 in 2002          |
| <b>Last meeting</b>   | <b>Largest WU win</b>  |
| SBU 26, WU 20 in 2002 | 58-21 in 2000          |
| <b>Last WU win</b>    | <b>Largest SBU win</b> |
| 58-21 in 2000         | 48-20 in 2001          |

## Series Notes

- The Ichabods have won six of the last nine meetings.
- The Ichabods are 4-3 in games in Bolivar.
- The longest winning streak by either team in the series was four games by the Ichabods from 1993 to 1997.
- Washburn's two-game slide is the longest in the series.

## Last 10 Meetings

for series history, turn to page 62

| Date     | Site    | Score      | Date     | Site    | Score   |
|----------|---------|------------|----------|---------|---------|
| 11.16.02 | Bolivar | L 20-26    | 9.20.97  | Bolivar | W 25-7  |
| 11.10.01 | Topeka  | L 20-48    | 10.26.96 | Topeka  | W 24-20 |
| 10.14.00 | Topeka  | W 58-21    | 10.21.95 | Bolivar | W 37-20 |
| 10.14.99 | Bolivar | W 36-0     | 11.12.94 | Topeka  | W 31-14 |
| 9.19.98  | Topeka  | L OT 20-26 | 11.13.93 | Bolivar | L 20-25 |

## 2003 SCHEDULE

|                |                        |               |
|----------------|------------------------|---------------|
| Sept. 6        | at Kentucky Wesleyan   | 1:30 p.m.     |
| Sept. 13       | Central Oklahoma       | 6 p.m.        |
| Sept. 20       | at Missouri Western    | 1 p.m.        |
| Sept. 27       | Pittsburg State        | 2 p.m.        |
| Oct. 4         | Central Missouri State | 2 p.m.        |
| Oct. 11        | at Missouri-Rolla      | 1 p.m.        |
| <b>Oct. 18</b> | <b>Washburn</b>        | <b>2 p.m.</b> |
| Oct. 25        | at Emporia State       | 2 p.m.        |
| Nov. 1         | at Missouri Southern   | 2 p.m.        |
| Nov. 8         | at Northwest Missouri  | 1 p.m.        |
| Nov. 15        | Truman                 | 2 p.m.        |

## 2002 RESULTS (3-8)

|                |                      |                |
|----------------|----------------------|----------------|
| Aug. 29        | Tennessee-Martin     | L 18-19        |
| Sept. 7        | Kentucky Wesleyan    | W 35-7         |
| Sept. 21       | at Missouri Southern | L 25-40        |
| Sept. 28       | Northwest Missouri   | L 7-28         |
| Oct. 5         | at Truman            | L 32-44        |
| Oct. 12        | Central Missouri     | L 6-35         |
| Oct. 19        | at Missouri Western  | L 0-28         |
| Oct. 26        | at Emporia State     | L 13-21        |
| Nov. 2         | Missouri-Rolla       | W 17-7         |
| Nov. 9         | at Pittsburg State   | L 13-48        |
| <b>Nov. 16</b> | <b>Washburn</b>      | <b>W 26-20</b> |



## General Information

**Location:** Bolivar, Mo.

**Founded:** 1878

**Enrollment:** 3,000

**Affiliation:** NCAA II

**Conference:** MIAA

**Nickname:** Bearcats

**Colors:** Purple and White

**President:** Dr. C. Pat Taylor

**Director of Athletics:** Jim Middleton

## Coaching Staff

**Head Coach:** Ray Richards

Alma Mater: Northern Michigan, 1981

Record at SBU: 9-13, 2 seasons

Overall Record: same

Phone: 417.328.1787

**Assistant Coaches:**

Tony Hatmaker

Johathan Polson

Rick Scholten

Jeff Fitzgerald

Nick Heggeman

Joe Alford

Rashaad West

**2002 Record:** 3-8

**MIAA Record, Finish:** 2-7, 9th

**Basic Formations:** Multiple I • 4-3

**Lettermen:** Returning-45 • Lost-10

**Returning Starters:** Offense-6 • Defense-9 • Specialty-0

## Sports Information

**Football SID:** Joey Roberts

**E-mail:** jrrobert@sbuniv.edu

**Phone:** 417.328.1799

**Fax:** 417.328.1745

**Press Box Phone:** 417.328.1778

**Athletic Web Site:**

falcon.sbuniv.edu/athletics

## Ichabod Travel Plans

**Leave:** Oct. 17 at 2 p.m. for Springfield

**Hotel:** Clarion Hotel

**Hotel Address:** 3333 South Glendstone, Springfield, Mo. 65804

**Hotel Phone:** 417.883.6550

**Return:** Oct. 18 following game



# UNIVERSITY OF MISSOURI-ROLLA

Game 8 • Oct. 25 at Topeka (Yager Stadium) • 1 p.m. • Homecoming



**Kirby  
Cannon**  
Head Coach



**Clint  
Moss**  
Wide Receiver



## Series History - Washburn leads 9-5

**First meeting**  
UMR 20, WU 7 in 1989  
**Last meeting**  
WU 49, UMR 0 in 2002  
**Last WU win**  
49-0 in 2002

**Last UMR win**  
19-0 in 1994  
**Largest WU win**  
49-0 in 2002  
**Largest UMR win**  
38-14 in 1993

## Series Notes

- The Ichabods have won the last eight meetings.
- The Miners' last win in the series was Sept. 18, 1993.
- The Ichabods have won 11 of their last 14 homecoming games played at home and on the road winning last season at Truman and falling at home to Missouri Western.

## Last 10 Meetings

for series history, turn to page 62

| Date    | Site   | Score   | Date     | Site   | Score   |
|---------|--------|---------|----------|--------|---------|
| 11.9.02 | Rolla  | W 49-0  | 9.27.97  | Topeka | W 27-13 |
| 11.3.01 | Topeka | W 42-14 | 10.19.96 | Rolla  | W 45-0  |
| 10.7.00 | Rolla  | W 34-14 | 10.14.95 | Topeka | W 21-10 |
| 10.9.99 | Topeka | W 53-18 | 9.17.94  | Rolla  | L 0-19  |
| 9.26.98 | Rolla  | W 24-7  | 9.18.93  | Topeka | L 14-38 |

## 2003 SCHEDULE

|                |                      |                     |
|----------------|----------------------|---------------------|
| Sept. 6        | Colorado Mines       | ..... 1 p.m.        |
| Sept. 13       | at Drake             | ..... 1 p.m.        |
| Sept. 20       | at Missouri Southern | ..... 6 p.m.        |
| Sept. 27       | Northwest Missouri   | ... 6:30 p.m.       |
| Oct. 4         | at Pittsburg State   | ..... 2 p.m.        |
| Oct. 11        | Southwest Baptist    | ..... 1 p.m.        |
| Oct. 18        | at Central Missouri  | ... 1:30 p.m.       |
| <b>Oct. 25</b> | <b>at Washburn</b>   | <b>..... 1 p.m.</b> |
| Nov. 1         | Emporia State        | ..... 2 p.m.        |
| Nov. 8         | at Truman            | ..... 1 p.m.        |
| Nov. 15        | Missouri Western     | ..... 1 p.m.        |

## 2002 RESULTS (0-11)

|               |                       |                     |
|---------------|-----------------------|---------------------|
| Aug. 31       | at Harding            | ..... L 15-23       |
| Sept. 14      | Drake                 | ..... L 25-28       |
| Sept. 21      | at Northwest Missouri | ... L 9-34          |
| Sept. 28      | Truman                | ..... L 28-57       |
| Oct. 3        | at Central Missouri   | ..... L 14-55       |
| Oct. 12       | Missouri Western      | ..... L 9-29        |
| Oct. 19       | Emporia State         | ..... L 7-40        |
| Oct. 26       | at Pittsburg State    | ..... L 14-48       |
| Nov. 2        | at Southwest Baptist  | ... L 7-17          |
| <b>Nov. 9</b> | <b>Washburn</b>       | <b>..... L 0-49</b> |
| Nov. 16       | Missouri Southern     | ..... L 25-49       |



## General Information

**Location:** Rolla, Mo.  
**Founded:** 1870  
**Enrollment:** 5,304  
**Affiliation:** NCAA II  
**Conference:** MIAA  
**Nickname:** Miners  
**Colors:** Silver and Gold  
**Chancellor:** Dr. Gary Thomas  
**Director of Athletics:** Mark Mullin

## Coaching Staff

**Head Coach:** Kirby Cannon  
Alma Mater: Southwest Missouri State, 1981  
Record at UMR: 4-40, years  
Overall Record: 4-40, years  
Phone: 573.341.4957

## Assistant Coaches:

Shawn Corbett  
Marc Kolb  
Joe Pfankuch  
Travis Boulware

**2002 Record:** 0-11

**MIAA Record, Finish:** 0-9, 10th

**Basic Formations:** Multiple • 4-3

**Lettermen:** Returning-40 • Lost-13

**Returning Starters:** Offense-10 •  
Defense-7 • Specialty-1

## Sports Information

**Football SID:** John Kean

**E-mail:** jkean@umr.edu

**Phone:** 573.341.4140

**Fax:** 573.341.4880

**Press Box Phone:** 573.341.4057

**Athletic Web Site:**

campus.umr.edu/sports

# CENTRAL MISSOURI STATE UNIVERSITY

Game 9 • Nov. 1 at Topeka (Yager Stadium) • 1 p.m.



**Willie  
Fritz**

*Head Coach*



**Rodrick  
Green**

*Defensive End*



## Series History - CMSU leads 17-15-2

|   |   |
|---|---|
| <b>First meeting</b><br>WU 6, CMSU 0 in 1902  | <b>Last CMSU win</b><br>55-21 in 2002   |
| <b>Last meeting</b><br>CMSU 55, WU 21 in 2002 | <b>Largest WU win</b><br>34-0 in 1963   |
| <b>Last WU win</b><br>23-7 in 1996            | <b>Largest CMSU win</b><br>37-0 in 1998 |

## Series Notes

- The Ichabods have lost the last six meetings in the series last winning on Oct. 12, 1996 in Topeka.
- The six-game winning streak is the longest by either team in the series.
- The Ichabods are 5-7-1 against Central Missouri at home since 1961.

## Last 10 Meetings

for series history, turn to page 62

| Date     | Site        | Score   | Date     | Site        | Score   |
|----------|-------------|---------|----------|-------------|---------|
| 10.19.02 | Warrensburg | L 21-55 | 11.8.97  | Warrensburg | L 14-20 |
| 10.11.01 | Topeka      | L 34-58 | 10.12.96 | Topeka      | W 23-7  |
| 9.30.00  | Warrensburg | L 17-28 | 10.7.95  | Warrensburg | W 37-21 |
| 9.30.99  | Topeka      | L 18-32 | 9.24.94  | Topeka      | L 10-43 |
| 11.7.98  | Topeka      | L 0-37  | 9.25.93  | Warrensburg | L 19-41 |

## 2003 SCHEDULE

|               |                       |                     |
|---------------|-----------------------|---------------------|
| Aug. 28       | Lincoln               | ..... 7 p.m.        |
| Sept. 11      | Langston (Okla.)      | ..... 7 p.m.        |
| Sept. 20      | at Northwest Missouri | ... 1 p.m.          |
| Sept. 27      | Missouri Southern     | .... 1:30 p.m.      |
| Oct. 4        | at Southwest Baptist  | .... 2 p.m.         |
| Oct. 11       | at Missouri Western   | .... 1 p.m.         |
| Oct. 18       | Missouri-Rolla        | ..... 1:30 p.m.     |
| Oct. 25       | Truman State          | ..... 1 p.m.        |
| <b>Nov. 1</b> | <b>at Washburn</b>    | <b>..... 1 p.m.</b> |
| Nov. 8        | Pittsburg State       | ..... 1 p.m.        |
| Nov. 15       | at Emporia State      | ..... 2 p.m.        |

## 2002 RESULTS (10-2)

|                |                       |                      |
|----------------|-----------------------|----------------------|
| Aug. 31        | at Lincoln            | ..... W 63-7         |
| Sept. 14       | Sterling (Kan.)       | ..... W 72-12        |
| Sept. 21       | at Missouri Western   | ... W 21-14          |
| Sept. 28       | Emporia State         | ..... W 41-13        |
| Oct. 5         | Missouri-Rolla        | ..... W 55-14        |
| Oct. 12        | at Southwest Baptist  | ... W 35-6           |
| <b>Oct. 19</b> | <b>Washburn</b>       | <b>..... W 55-21</b> |
| Oct. 27        | Missouri Southern     | ..... W 42-21        |
| Nov. 2         | at Northwest Missouri | ... L 7-10           |
| Nov. 9         | Truman                | ..... W 17-3         |
| Nov. 16        | at Pittsburg State    | ... WOT 23-20        |
| Nov. 23        | at Northern Colorado  | ... L 28-49          |



## General Information

**Location:** Warrensburg, Mo.

**Founded:** 1871

**Enrollment:** 11,000

**Affiliation:** NCAA II

**Conference:** MIAA

**Nickname:** Mules

**Colors:** Cardinal and Black

**President:** Dr. Bobby Patton

**Director of Athletics:** Jerry Hughes

## Coaching Staff

**Head Coach:** Willie Fritz

Alma Mater: Pittsburg State, 1983

Record at CMSU: 47-21, 6 years

Overall Record: Same

Phone: 660.543.4252

## Assistant Coaches:

Scott Grinde

Chris Klenakis

Chuck Clemens

Scott Baumgartner

Charlie Lee

Bill Brechue

Andy Ball

Dave Brown

Andy Sims

**2002 Record:** 10-2

**MIAA Record, Finish:** 8-1, 2nd

**Basic Formations:** Multiple • 4-3

**Lettermen:** Returning-25 • Lost-31

**Returning Starters:** Offense-3 •  
Defense-3 • Specialty-3

## Sports Information

**Football SID:** Joe Moore

**E-mail:** jhmoore@cmsu1.cmsu.edu

**Phone:** 660.543.4312

**Fax:** 660.543.8034

**Press Box Phone:** 660.543.4312

**Athletic Web site:**

www.cmsu.edu/athletic

# MISSOURI WESTERN STATE COLLEGE

Game 10 • Nov. 8 at St. Joseph, Mo. (Spratt Stadium) • 1 p.m.



**Jerry  
Partridge**  
Head Coach



**Eric  
McDowell**  
Defensive End



## Series History - MWSC leads 17-12-2

|  |  |
|--|--|
| <b>First meeting</b><br>WU 58, MWSC 3 in 1972      | <b>Last MWSC win</b><br>34-21 (OT) in 2002 |
| <b>Last meeting</b><br>MWSC 34, WU 28 (OT) in 2002 | <b>Largest WU win</b><br>58-3 in 1972      |
| <b>Last WU win</b><br>35-27 in 1998                | <b>Largest MWSC win</b><br>52-0 in 1981    |

## Series Notes

- Last season the Ichabods fell in double overtime to the Griffons on homecoming.
- The Ichabods last win in St. Joseph was on Nov. 10, 1990 in a 21-10 victory.
- The Ichabods' longest winning streak was from 1986 to 1990 when they won five straight.

## Last 10 Meetings

for series history, turn to page 62

| Date     | Site       | Score        | Date     | Site       | Score   |
|----------|------------|--------------|----------|------------|---------|
| 10.26.02 | Topeka     | L(2OT) 28-34 | 10.18.97 | St. Joseph | L 12-13 |
| 10.20.01 | St. Joseph | L 6-27       | 9.21.96  | Topeka     | W 21-7  |
| 9.23.00  | Topeka     | L 13-23      | 9.16.95  | St. Joseph | L 6-17  |
| 9.25.99  | St. Joseph | L 10-35      | 10.22.94 | Topeka     | L 28-60 |
| 10.17.98 | Topeka     | W 35-27      | 10.23.93 | St. Joseph | L 21-36 |

## 2003 SCHEDULE

|               |                              |               |
|---------------|------------------------------|---------------|
| Aug. 30       | at Winona State . . . . .    | 6 p.m.        |
| Sept. 6       | at Benedictine . . . . .     | 2 p.m.        |
| Sept. 20      | Southwest Baptist . . . . .  | 1 p.m.        |
| Sept. 27      | at Emporia State . . . . .   | 2 p.m.        |
| Oct. 4        | Missouri Southern . . . . .  | 1 p.m.        |
| Oct. 11       | Central Missouri . . . . .   | 1 p.m.        |
| Oct. 18       | at Truman State . . . . .    | 2 p.m.        |
| Oct. 25       | Northwest Missouri . . . . . | 1 p.m.        |
| Nov. 1        | at Pittsburg State . . . . . | 2 p.m.        |
| <b>Nov. 8</b> | <b>Washburn . . . . .</b>    | <b>1 p.m.</b> |
| Nov. 15       | at Missouri-Rolla . . . . .  | 1 p.m.        |

## 2002 RESULTS (6-5)

|                |                                |                   |
|----------------|--------------------------------|-------------------|
| Aug. 29        | Winona State . . . . .         | WOT 31-30         |
| Sept. 7        | at South Dakota . . . . .      | W 10-3            |
| Sept. 21       | Central Missouri . . . . .     | L 14-21           |
| Sept. 28       | at Pittsburg State . . . . .   | L 21-25           |
| Oct. 5         | Emporia State . . . . .        | L 14-21           |
| Oct. 12        | at Missouri-Rolla . . . . .    | W 29-9            |
| Oct. 19        | Southwest Baptist . . . . .    | W 28-0            |
| <b>Oct. 26</b> | <b>at Washburn . . . . .</b>   | <b>W2OT 34-28</b> |
| Nov. 2         | at Missouri Southern . . . . . | W 28-7            |
| Nov. 9         | Northwest Missouri . . . . .   | L 10-13           |
| Nov. 16        | at Truman . . . . .            | L 23-27           |



## General Information

**Location:** St. Joseph, Mo.  
**Founded:** 1969  
**Enrollment:** 5,158  
**Affiliation:** NCAA II  
**Conference:** MIAA  
**Nickname:** Griffons  
**Colors:** Black and Gold  
**President:** Dr. James Scanlon  
**Director of Athletics:** Mark Linder

## Coaching Staff

**Head Coach:** Jerry Partridge  
 Alma Mater: Missouri Western, 1985  
 Record at MWSC: 39-28, 6 years  
 Overall Record: 39-28, 6 years  
 Phone: 816.271.5944

## Assistant Coaches:

Jay Bubak  
 Les Boyum  
 Doug Smith  
 Matt Williamson

**2002 Record:** 6-5

**MIAA Record, Finish:** 4-5, T5th

**Basic Formations:** Multiple • 4-3

**Lettermen:** Returning-39 • Lost-11

**Returning Starters:** Offense-8 •  
 Defense-9 • Specialty-1

## Sports Information

**Football SID:** Brett King  
**E-mail:** king@mwsc.edu  
**Phone:** 816.271.4257  
**Fax:** 816.271.4544  
**Press Box Phone:** 816.271.4257  
**Athletic Web site:**  
[www.gogriffons.com](http://www.gogriffons.com)

## Ichabod Travel Plans

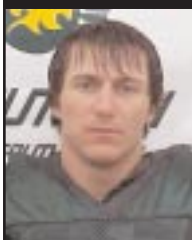
**Leave:** Nov. 8 at 8:30 a.m.  
**Return:** Following game

# MISSOURI SOUTHERN STATE COLLEGE

Game 11 • Oct. 15 at Topeka (Yager Stadium) • 1 p.m. • Senior Day



**Bill  
Cooke**  
Head Coach



**Ryan  
Burpo**  
Free Safety



## Series History - MSSC leads 20-12-1

|                        |                         |
|------------------------|-------------------------|
| <b>First meeting</b>   | <b>Last MSSC win</b>    |
| WU 21, MSSC 21 in 1970 | 52-28 in 2002           |
| <b>Last meeting</b>    | <b>Largest WU win</b>   |
| MSSC 52, WU 28 in 2002 | 25-7 in 1986            |
| <b>Last WU win</b>     | <b>Largest MSSC win</b> |
| 29-28 in 2001          | 44-14 in 1992           |

## Series Notes

- The Ichabods have won four of the last seven meetings.
- Missouri Southern's 52-28 win last season was the largest win in the series since the Lions won 38-16 in Joplin on Oct. 29, 1994.
- The Lions are 10-6 in games in Topeka.

## Last 10 Meetings

for series history, turn to page 62

| Date     | Site   | Score   | Date     | Site   | Score   |
|----------|--------|---------|----------|--------|---------|
| 9.28.02  | Joplin | L 28-52 | 10.23.97 | Topeka | L 14-17 |
| 9.22.01  | Topeka | W 29-28 | 11.16.96 | Joplin | L 31-32 |
| 9.16.00  | Joplin | W 24-22 | 11.11.95 | Topeka | L 0-25  |
| 9.18.99  | Topeka | W 35-28 | 10.29.94 | Joplin | L 16-38 |
| 10.24.98 | Joplin | W 49-37 | 10.30.93 | Topeka | L 21-36 |

## 2003 SCHEDULE

|                |                           |               |
|----------------|---------------------------|---------------|
| Aug. 28        | at Bacone.....            | 7 p.m.        |
| Sept. 13       | Northeastern State .....  | 6 p.m.        |
| Sept. 20       | Missouri-Rolla .....      | 6 p.m.        |
| Sept. 27       | at Central Missouri....   | 1:30 p.m.     |
| Oct. 4         | at Missouri Western.....  | 1 p.m.        |
| Oct. 11        | Truman State .....        | 2 p.m.        |
| Oct. 18        | at Northwest Missouri.... | 1 p.m.        |
| Oct. 25        | Pittsburg State.....      | 6 p.m.        |
| Nov. 1         | Southwest Baptist .....   | 2 p.m.        |
| Nov. 8         | Emporia State .....       | 2 p.m.        |
| <b>Nov. 15</b> | <b>at Washburn.....</b>   | <b>1 p.m.</b> |

## 2002 RESULTS (5-6)

|                 |                           |                |
|-----------------|---------------------------|----------------|
| Sept. 7         | Greenville (Ill.) .....   | W 63-0         |
| Sept. 14        | at Northeastern State...  | W 38-7         |
| Sept. 21        | Southwest Baptist ....    | W 40-25        |
| <b>Sept. 28</b> | <b>Washburn .....</b>     | <b>W 52-28</b> |
| Oct. 5          | at Pittsburg State .....  | L 12-50        |
| Oct. 12         | at Northwest Missouri ... | L 3-47         |
| Oct. 19         | Truman .....              | L 14-28        |
| Oct. 26         | at Central Missouri ....  | L 21-42        |
| Nov. 2          | Missouri Western .....    | L 7-28         |
| Nov. 9          | Emporia State .....       | L 16-47        |
| Nov. 16         | at Missouri-Rolla .....   | W 49-25        |



## General Information

**Location:** Joplin, Mo.

**Founded:** 1937

**Enrollment:** 5,740

**Affiliation:** NCAA II

**Conference:** MIAA

**Nickname:** Lions

**Colors:** Green and Gold

**President:** Dr. Julio S. Leon

**Director of Athletics:** Sallie Beard

## Coaching Staff

**Head Coach:** Bill Cooke

Alma Mater: Fort Lewis (Colo.), 1973

Record at MSSC: 14-28, 4 years

Overall Record: 34-44-1, 8 years

Phone: 417.625.9358

## Assistant Coaches:

Rob Green

Mark Smith

Andy Schneider

Bob Ray

**2002 Record:** 5-6

**MIAA Record, Finish:** 3-6, T7th

**Basic Formations:** I-Formation • 4-3

**Lettermen:** Returning-41 • Lost-12

**Returning Starters:** Offense-8 • Defense-8 • Specialty-2

## Sports Information

**Football SID:** J.R. Belew

**E-mail:** belew-j@mssc.edu

**Phone:** 417.625.9359

**Fax:** 417.625.9397

**Press Box Phone:** 417.437.4513

**Athletics Web site:**

[www.mssc.edu/athletics](http://www.mssc.edu/athletics)



# 2003 Opponent Composite Football Schedule

|              | Aug. 30                        | Sept. 6                              | Sept. 13                             | Sept. 20                           | Sept. 27                            | Oct. 4                            | Oct. 11                           | Oct. 18                            | Oct. 25                             | Nov. 1                             | Nov. 8                              | Nov. 15                            |
|--------------|--------------------------------|--------------------------------------|--------------------------------------|------------------------------------|-------------------------------------|-----------------------------------|-----------------------------------|------------------------------------|-------------------------------------|------------------------------------|-------------------------------------|------------------------------------|
| <b>LU</b>    |                                | <b>Washburn</b><br>7 p.m.            | Sept. 11 at<br>Central Mo.<br>7 p.m. | Texas<br>College<br>7 p.m.         | at Southern<br>Nazarene<br>6 p.m.   | at Lincoln<br>1 p.m.              | SW<br>Assemblies<br>of God 1 p.m. | at Northwestern<br>State 1 p.m.    |                                     | at Bacone<br>1 p.m.                | at Panhandle<br>State<br>1 p.m.     | Haskell<br>2 p.m.                  |
| <b>FHSU</b>  |                                | Emporia<br>State<br>7 p.m.           | <b>at Washburn</b><br>6 p.m.         | at Chadron<br>State<br>2 p.m.      | Adams State<br>7 p.m.               | Colorado<br>Mines<br>2 p.m.       | at Fort Lewis<br>2 p.m.           | Oklahoma<br>Panhandle<br>2 p.m.    | at Mesa<br>State<br>2 p.m.          | Nebraska-<br>Kearney<br>2 p.m.     | Western<br>State<br>1 p.m.          | at N.M.<br>Highlands<br>2 p.m.     |
| <b>ESU</b>   |                                | at Fort Hays<br>State<br>7 p.m.      | East Central<br>7 p.m.               | <b>Washburn</b><br>2 p.m.          | Missouri<br>Western<br>2 p.m.       | at Truman<br>2 p.m.               | Northwest<br>Missouri<br>2 p.m.   | at Pittsburg<br>State<br>2 p.m.    | Southwest<br>Baptist<br>2 p.m.      | at Missouri-<br>Rolla<br>2 p.m.    | at Missouri<br>Southern<br>2 p.m.   | Central<br>Missouri<br>2 p.m.      |
| <b>TSU</b>   |                                | Winona State<br>1:30 p.m.            | at Illinois<br>State<br>6:30 p.m.    | Pittsburg<br>State<br>1:30 p.m.    | <b>at Washburn</b><br>1 p.m.        | Emporia<br>State<br>2 p.m.        | at Missouri<br>Southern<br>2 p.m. | Missouri<br>Western<br>2 p.m.      | at Central<br>Missouri<br>1:30 p.m. | at Northwest<br>Missouri<br>1 p.m. | Missouri-<br>Rolla<br>1 p.m.        | at Southwest<br>Baptist<br>2 p.m.  |
| <b>NWMSU</b> |                                | at South<br>Dakota State<br>7 p.m.   | Minn. State<br>Mankato<br>1 p.m.     | Central<br>Missouri<br>1 p.m.      | at Missouri-<br>Rolla<br>6:30 p.m.  | <b>Washburn</b><br>1 p.m.         | at Emporia<br>State<br>2 p.m.     | Missouri<br>Southern<br>1 p.m.     | at Missouri<br>Western<br>1 p.m.    | Truman<br>1 p.m.                   | Southwest<br>Baptist<br>1 p.m.      | vs Pittsburg<br>State<br>2 p.m.    |
| <b>PSU</b>   |                                | Lincoln<br>7 p.m.                    | St. Cloud<br>State<br>7 p.m.         | at Truman<br>1:30 p.m.             | at Southwest<br>Baptist<br>2 p.m.   | Missouri-<br>Rolla<br>2 p.m.      | <b>at Washburn</b><br>1 p.m.      | Emporia<br>State<br>2 p.m.         | at Missouri<br>Southern<br>6 p.m.   | Missouri<br>Western<br>2 p.m.      | at Central<br>Missouri<br>1:30 p.m. | vs Northwest<br>Missouri<br>2 p.m. |
| <b>SBU</b>   |                                | at Kentucky<br>Wesleyan<br>1:30 p.m. | Central<br>Oklahoma<br>6 p.m.        | at Missouri<br>Western<br>1 p.m.   | Pittsburg<br>State<br>2 p.m.        | Central<br>Missouri<br>2 p.m.     | at Missouri-<br>Rolla<br>1 p.m.   | <b>Washburn</b><br>2 p.m.          | at Emporia<br>State<br>2 p.m.       | at Missouri<br>Southern<br>2 p.m.  | at Northwest<br>Missouri<br>1 p.m.  | Truman<br>2 p.m.                   |
| <b>UMR</b>   |                                | Colorado<br>Mines<br>1 p.m.          | at Drake<br>1 p.m.                   | at Missouri<br>Southern<br>6 p.m.  | Northwest<br>Missouri<br>6:30 p.m.  | at Pittsburg<br>State<br>2 p.m.   | Southwest<br>Baptist<br>1 p.m.    | at Central<br>Missouri<br>1:30     | <b>at Washburn</b><br>1 p.m.        | Emporia<br>State<br>2 p.m.         | at Truman<br>1 p.m.                 | Missouri<br>Western<br>1 p.m.      |
| <b>CMSU</b>  | Aug. 28<br>Lincoln<br>7 p.m.   |                                      | Sept. 11<br>Langston<br>7 p.m.       | at Northwest<br>Missouri<br>1 p.m. | Missouri<br>Southern<br>1:30 p.m.   | at Southwest<br>Baptist<br>2 p.m. | at Missouri<br>Western<br>1 p.m.  | Missouri-<br>Rolla<br>1:30 p.m.    | Truman<br>1:30 p.m.                 | <b>at Washburn</b><br>1 p.m.       | Pittsburg<br>State<br>1:30 p.m.     | at Emporia<br>State<br>2 p.m.      |
| <b>MWSC</b>  | at Winona<br>State<br>6 p.m.   | at<br>Benedictine<br>2 p.m.          |                                      | Southwest<br>Baptist<br>1 p.m.     | at Emporia<br>State<br>2 p.m.       | Missouri<br>Southern<br>1 p.m.    | Central<br>Missouri<br>1 p.m.     | at Truman<br>2 p.m.                | Northwest<br>Missouri<br>1 p.m.     | at Pittsburg<br>State<br>2 p.m.    | <b>Washburn</b><br>1 p.m.           | at Missouri-<br>Rolla<br>1 p.m.    |
| <b>MSSC</b>  | Aug. 28<br>at Bacone<br>7 p.m. |                                      | Northeastern<br>State<br>6 p.m.      | Missouri-<br>Rolla<br>6 p.m.       | at Central<br>Missouri<br>1:30 p.m. | at Missouri<br>Western<br>1 p.m.  | Truman<br>2 p.m.                  | at Northwest<br>Missouri<br>1 p.m. | Pittsburg<br>State<br>6 p.m.        | Southwest<br>Baptist<br>2 p.m.     | Emporia<br>State<br>2 p.m.          | <b>at Washburn</b><br>1 p.m.       |

## 2003 MIAA Composite Football Schedule

### Thursday, August 28

MSSC @ Bacone (Okla.) . . . . . 7 p.m.  
Lincoln (Mo.) @ CMSU . . . . . 7 p.m.

### Saturday, August 30

MWSC @ Winona (Minn.) St. . . 6 p.m.

### Saturday, September 6

WU vs. Langston (Okla.) @ Guthrie,  
Okla. . . . . 7 p.m.  
Colorado Mines @ UMR . . . . . 1 p.m.  
SBU @ Kentucky Wesleyan . 1:30 p.m.  
Winona (Minn.) St. @ TSU . 1:30 p.m.  
MWSC @ Benedictine (Kan.) . . 2 p.m.  
ESU @ Fort Hays (Kan.) St. . . 7 p.m.  
Lincoln (Mo.) @ PSU . . . . . 7 p.m.  
NWMSU @ South Dakota St. . 7 p.m.

### Thursday, September 11

Langston (Okla.) @ CMSU . . . 7 p.m.

### Saturday, September 13

Minn.St. -Mankato @ NWMSU 1 p.m.  
UMR @ Drake (Iowa) . . . . . 1 p.m.  
Central Oklahoma @ SBU . . . 6 p.m.  
Fort Hays (Kan.) St. @ WU . . 6 p.m.  
NE'stern (Okla.) St. @ MSSC . 6 p.m.  
TSU @ Illinois St. . . . . . 7 p.m.  
East Central (Okla.) @ ESU . . 7 p.m.  
St. Cloud (Minn.) St. @ PSU . . 7 p.m.

### Saturday, September 20

\*CMSU @ NWMSU . . . . . 1 p.m.  
\*SBU @ MWSC . . . . . 1 p.m.  
\*PSU @ TSU . . . . . 1:30 p.m.  
\*WU @ ESU . . . . . 2 p.m.  
\*UMR @ MSSC . . . . . 6 p.m.

### Saturday, September 27

\*TSU @ WU . . . . . 1 p.m.  
\*MSSC @ CMSU . . . . . 1:30 p.m.  
\*MWSC @ ESU . . . . . 2 p.m.  
\*PSU @ SBU . . . . . 2 p.m.  
\*NWMSU @ UMR . . . . . 6:30 p.m.

### Saturday, October 4

\*MSSC @ MWSC . . . . . 1 p.m.  
\*WU @ NWMSU . . . . . 1 p.m.  
\*CMSU @ SBU . . . . . 2 p.m.  
\*ESU @ TSU . . . . . 2 p.m.  
\*UMR @ PSU . . . . . 2 p.m.

### Saturday, October 11

\*CMSU @ MWSC . . . . . 1 p.m.  
\*PSU @ WU . . . . . 1 p.m.  
\*SBU @ UMR . . . . . 1 p.m.  
\*NWMSU @ ESU . . . . . 2 p.m.  
\*TSU @ MSSC . . . . . 2 p.m.

### Saturday, October 18

\*MSSC @ NWMSU . . . . . 1 p.m.  
\*UMR @ CMSU . . . . . 1:30 p.m.  
\*ESU @ PSU . . . . . 2 p.m.  
\*MWSC @ TSU . . . . . 2 p.m.  
\*WU @ SBU . . . . . 2 p.m.

### Saturday, October 25

\*NWMSU @ MWSC . . . . . 1 p.m.  
\*UMR @ WU . . . . . 1 p.m.  
\*TSU @ CMSU . . . . . 1:30 p.m.  
\*SBU @ ESU . . . . . 2 p.m.  
\*PSU @ MSSC . . . . . 6 p.m.

### Saturday, November 1

\*CMSU @ WU . . . . . 1 p.m.  
\*TSU @ NWMSU . . . . . 1 p.m.  
\*ESU @ UMR . . . . . 2 p.m.  
\*MWSC @ PSU . . . . . 2 p.m.  
\*SBU @ MSSC . . . . . 2 p.m.

### Saturday, November 8

\*SBU @ NWMSU . . . . . 1 p.m.  
\*UMR @ TSU . . . . . 1 p.m.  
\*WU @ MWSC . . . . . 1 p.m.  
\*PSU @ CMSU . . . . . 1:30 p.m.  
\*ESU @ MSSC . . . . . 2 p.m.

### Saturday, November 15

\*MSSC @ WU . . . . . 1 p.m.  
\*MWSC @ UMR . . . . . 1 p.m.  
\*CMSU @ ESU . . . . . 2 p.m.  
\*NWMSU vs. PSU @ Arrowhead  
Stadium, Kansas City, Mo. . . 2 p.m.  
\*TSU @ SBU . . . . . 2 p.m.

### Saturday, November 22

NCAA Division II Playoffs  
First Round @ campus sites

### Saturday, November 29

NCAA Division II Playoffs  
Quarterfinals @ campus sites

### Saturday, December 5

NCAA Division II Playoffs  
Semifinals @ campus sites  
Mineral Water Bowl  
MIAA vs. NSIC @ Excelsior Springs,  
Mo. . . . . 1 p.m.

### Saturday, December 12

NCAA Division II Championship  
Game @ Florence, Ala.

\*=MIAA Game. All times are Central  
Daylight/Standard. Dates and times  
are subject to change.

# 2003 OPPONENTS SERIES RESULTS

## Langston (1-0)

9.10.1977 W 37-32 H

## Fort Hays State (34-22-3)

1919 W 7-6  
1928 L 6-2  
1929 W 27-0  
1930 W 31-7  
1931 W 27-7  
1932 W 12-0  
1933 T 0-0  
1934 L 23-12  
1935 L 12-6  
1941 W 21-0  
1942 W 21-13  
1946 T 20-20  
1947 W 47-14  
1948 T 6-6  
1949 W 35-13  
1950 W 7-0  
1951 W 34-6  
1952 W 20-14  
1953 L 7-6  
1954 L 27-6  
1955 W 27-7  
1956 W 32-19  
1957 L 19-16  
1958 W 19-6  
1959 W 19-12  
1960 W 33-7  
11.11.1961 L 14-7 H  
11.10.1962 L 33-14 A  
11.9.1963 W 46-0 H  
10.17.1964 W 14-7 A  
10.16.1965 L 25-0 H  
10.15.1966 L 7-0 A  
10.14.1967 L 35-0 H  
10.12.1968 W 9-6 A  
10.11.1969 W 27-6 H  
10.10.1970 L 27-8 A  
10.9.1971 W 34-10 H  
10.14.1972 W 31-29 A  
10.13.1973 W 19-14 H  
10.26.1974 W 14-7 A  
10.25.1975 W 27-8 H  
10.30.1976 W 23-19 H  
11.12.1977 W 30-22 H  
11.11.1978 L 17-10 A  
10.20.1979 L 20-6 H  
10.18.1980 L 28-17 A  
10.31.1981 L 7-0 H  
10.30.1982 L 34-7 H  
10.22.1983 W 24-3 H  
10.20.1984 W 26-14 A  
10.26.1985 L 30-0 H  
10.25.1986 W 40-35 A  
11.7.1987 W 49-12 H  
11.5.1988 L 22-14 A  
9.14.1996 L 21-6 A  
9.13.1997 W 31-14 H  
9.12.1998 L 24-12 A  
9.11.1999 W 17-14 H  
9.14.2002 L 37-29 A

## Emporia State (43-50-6)

1899 L 11-0  
1901 W 6-0  
1902 W 6-0  
1903 T 0-0  
1904 W 21-0  
1905 W 29-6  
1906 W 6-0

1907 W 18-0  
1908 W 6-0  
1909 W 24-6  
1910 L 14-12  
1911 W 8-0  
1912 L 7-6  
1913 W 41-7  
1914 L 19-0  
1915 T 7-7  
1916 L 23-7  
1917 T 0-0  
1918 W 22-3  
1919 W 20-6  
1920 T 7-7  
1921 W 10-7+  
1922 L 34-0  
1923 T 7-7  
1924 L 18-0  
1925 L 6-0  
1926 L 35-0  
1927 L 20-7  
1928 L 45-6  
1929 W 6-2  
1930 W 13-6  
1931 W 20-7  
1932 T 0-0  
1933 L 7-6  
1934 L 14-6  
1935 W 12-7  
1936 L 14-7  
1937 L 12-6  
1938 W 19-6  
1939 W 12-0  
1940 L 38-7  
1941 L 20-12  
1942 L 12-0  
1946 W 20-12  
1947 L 12-6  
1948 L 7-0  
1949 L 19-14  
1950 L 27-19  
1951 W 14-13  
1952 L 7-6  
1953 W 21-0  
1954 W 14-6  
1955 W 26-6  
1956 W 34-6  
1957 W 25-0  
1958 L 27-6  
1959 L 24-13  
1960 L 7-6  
10.13.1961 L 26-10 H  
10.12.1962 W 7-6 A  
10.12.1963 W 32-6 A  
11.14.1964 W 19-6 H  
11.13.1965 W 21-0 A  
9.10.1966 L 14-0 A  
11.12.1966 L 12-6 H  
11.11.1967 L 34-7 A  
11.9.1968 L 47-19 H  
11.8.1969 L 28-14 A  
11.7.1970 W 34-21 A  
11.6.1971 L 3-0 H  
11.11.1972 L 41-7 A  
11.10.1973 W 20-10 A  
10.5.1974 W 36-15 A  
10.4.1975 W 42-13 H  
10.9.1976 W 21-0 A  
10.1.1977 W 40-12 H  
9.30.1978 W 17-7 A  
9.29.1979 L 17-11 H  
9.27.1980 L 45-7 A  
10.10.1981 W 17-10 H  
10.9.1982 L 20-13 H  
10.1.1983 W 41-7 H  
9.29.1984 L 14-0 A

10.5.1985 W 25-18 H  
10.4.1986 L 22-16 A  
11.14.1987 W 28-21\* A  
11.12.1988 W 59-46 H  
10.12.1991 L 49-18 A  
10.10.1992 L 25-18 H  
11.6.1993 L 37-19 A  
11.5.1994 L 43-7 H  
9.30.1995 L 25-24 A  
10.5.1996 L 40-35 H  
10.30.1997 L 64-35 A  
10.29.1998 L 35-27 H  
11.13.1999 L 45-20 A  
11.11.2000 L 35-21 H  
10.27.2001 L 19-38 A  
11.2.2002 W 34-21 H

+ESU records reflect different score  
\*Later forfeited by WU

## Truman State (4-16)

1958 L 26-13  
1959 L 6-0  
1960 L 39-12  
9.22.1961 L 27-9 H  
9.22.1962 L 39-0 A  
9.21.1963 W 7-6\* H  
9.16.1989 W 21-3\* H  
9.15.1990 L 44-17 H  
9.21.1991 L 14-7 H  
9.19.1992 L 42-8 A  
10.16.1993 L 34-0 H  
10.15.1994 L 50-31 A  
9.23.1995 L 41-17 H  
9.28.1996 L 38-21 A  
10.11.1997 L 37-7 H  
10.10.1998 L 38-28 A  
11.6.1999 W 52-18 H  
11.4.2000 L 45-42 A  
10.6.2001 L 26-27 H  
10.12.2002 W 26-21 A

\*Later forfeited by WU

## Northwest Missouri (5-16)

1944 L 27-0  
1944 L 28-0  
9.8.1984 L 47-0 A  
9.7.1985 W 38-24 H  
9.13.1986 W 38-24 H  
9.12.1987 L 29-27 A  
9.10.1988 W 33-12 H  
10.21.1989 L 34-21 H  
10.20.1990 W 14-0 A  
9.28.1991 L 29-3 A  
9.26.1992 L 22-21 H  
10.9.1993 L 61-36 A  
10.8.1994 W 48-14 H  
11.4.1995 L 42-21 A  
11.9.1996 L 33-14 H  
10.4.1997 L 17-14 A  
10.3.1998 L 38-31 H  
10.30.1999 L 35-10 A  
10.28.2000 L 63-21 H  
9.29.2001 L 17-52 A  
10.5.2002 L 48-13 H

## Pittsburg State (18-56-1)

1920 W 7-0\*  
1921 L 21-7  
1922 L 6-0  
1923 L 10-0

1924 L 20-0  
1928 W 12-0  
1929 W 12-7+  
1930 W 13-7  
1931 W 15-0  
1932 W 27-7+  
1933 W 6-0  
1934 L 18-13  
1941 T 7-7  
1942 L 19-0  
1943 L 27-7  
1943 L 39-0  
1944 L 26-6  
1946 W 12-7  
1947 W 13-12  
1948 W 25-7  
1949 W 27-19  
1950 L 39-6  
1951 L 23-0  
1952 L 17-7  
1953 W 36-13  
1954 W 13-12  
1955 L 12-7  
1956 L 27-0  
1957 L 21-6  
1958 L 13-7  
1959 L 26-6  
1960 L 27-6  
10.28.1961 L 40-0 H  
10.27.1962 L 27-0 A  
10.26.1963 L 21-20 H  
10.24.1964 W 17-7+ H  
10.23.1965 L 20-7 A  
10.22.1966 L 24-20 H  
10.21.1967 L 38-12 A  
10.19.1968 L 14-0 H  
10.18.1969 W 19-17 A  
10.31.1970 L 13-7 A  
10.30.1971 L 27-0 A  
11.4.1972 L 21-7 H  
11.3.1973 L 21-14 A  
11.16.1974 L 15-14 H  
11.15.1975 L 20-16 A  
10.2.1976 W 28-16 H  
10.29.1977 W 28-21 H  
10.28.1978 L 14-27# H  
10.6.1979 L 46-12 A  
10.4.1980 W 38-36 H  
10.17.1981 L 35-12 A  
10.16.1982 L 38-14 A  
10.8.1983 L 29-21 A  
10.6.1984 L 21-20 H  
10.12.1985 L 35-18 A  
10.11.1986 L 21-7 H  
11.15.1986 L 58-24 A  
10.31.1987 L 44-0 A  
10.29.1988 L 23-14 H  
10.28.1989 L 61-0 A  
10.27.1990 L 17-0 H  
11.9.1991 L 21-0 H  
11.7.1992 L 48-29 A  
10.2.1993 L 55-18 H  
10.1.1994 L 62-13 A  
10.28.1995 L 31-7 H  
11.2.1996 L 43-14 A  
11.15.1997 L 40-11 H  
11.14.1998 L 72-12 A  
10.23.1999 L 27-8 H  
10.21.2000 L 31-28 A  
9.15.2001 L 21-51 A  
9.21.2002 L 47-14 H

+PSU records reflect different score

\*Later forfeited by WU

#Later forfeited by PSU

## Southwest Baptist (9-5)

11.4.1989 L 34-19 A  
11.3.1990 W 24-9 H  
11.2.1991 W 14-6 A  
10.31.1992 W 21-17 H  
11.13.1993 L 25-20 A  
11.12.1994 W 31-14 H  
10.21.1995 W 37-20 A  
10.26.1996 W 24-20 H  
9.20.1997 W 25-7 A  
9.19.1998 LOT 26-20 H  
10.14.1999 W 36-0 A  
10.14.2000 W 58-21 H  
11.10.2001 L 20-48 H  
11.16.2002 L 20-26 A

## Missouri-Rolla (9-5)

9.2.1989 L 20-7 H  
9.1.1990 W 13-7 A  
10.26.1991 L 28-13 H  
10.24.1992 L 26-21 A  
9.18.1993 L 38-14 H  
9.17.1994 L 19-0 A  
10.14.1995 W 21-10 H  
10.19.1996 W 45-0 A  
9.27.1997 W 27-13 H  
9.26.1998 W 24-7 A  
10.9.1999 W 53-18 H  
10.7.2000 W 34-14 A  
11.3.2001 W 42-14 H  
11.9.2002 W 49-0 A

## Central Missouri (15-17-2)

1902 W 6-0  
1914 W 6-0  
1915 W 19-7  
1943 T 0-0  
1944 W 12-2  
1945 W 25-0  
1960 L 35-14  
9.29.1961 W 27-15 H  
9.29.1962 W 20-0 A  
9.28.1963 W 34-0\* H  
9.26.1964 W 31-0 A  
9.25.1965 T 7-7 H  
9.24.1966 L 38-7 A  
9.23.1967 L 14-0 H  
9.21.1968 L 34-0 A  
9.20.1969 L 17-0 H  
9.21.1985 W 31-3 A  
9.20.1986 W 37-14 H  
9.19.1987 L 26-17 H  
9.17.1988 W 28-27 A  
9.9.1989 L 29-7 A  
9.8.1990 L 24-7 H  
10.19.1991 L 21-0 A  
10.17.1992 W 13-10 H  
9.25.1993 L 41-19 A  
9.24.1994 L 43-10 H  
10.7.1995 W 37-21 A  
10.12.1996 W 23-7 H  
11.8.1997 L 20-14 A  
11.7.1998 L 37-0 H  
9.30.1999 L 32-18 H  
9.30.2000 L 28-17 A  
10.11.2001 L 34-58 H  
10.19.2002 L 55-21 A

\*Later forfeited by WU

## Missouri Western (12-17-2)

9.16.1972 W 58-3 H  
9.15.1973 T 13-13 A  
9.21.1974 W 37-0 H  
9.20.1975 L 27-24 A  
9.18.1976 W 26-15 H  
10.22.1977 T 7-7 H  
10.21.1978 L 53-25 H  
10.27.1979 W 23-21 A  
10.25.1980 L 45-14 H  
11.7.1981 L 52-0 A  
11.6.1982 L 37-21 A  
10.29.1983 W 24-21 A  
10.27.1984 L 37-21 H  
11.2.1985 L 13-10 A  
11.1.1986 W 21-14 H  
10.3.1987 W 31-6\* A  
10.1.1988 W 17-10 H  
11.11.1989 W 28-21\* H  
11.10.1990 W 21-10 A  
11.16.1991 L 35-23 A  
11.14.1992 L 41-17 H  
10.23.1993 L 41-10 A  
10.22.1994 L 60-28 H  
9.16.1995 L 17-6 A  
9.21.1996 W 21-7 H  
10.18.1997 L 13-12 A  
10.17.1998 W 35-27 H  
9.25.1999 L 42-10 A  
9.23.2000 L 23-13 H  
10.20.2001 L 6-27 A  
10.26.2002 L-OT 34-28 H

\*Later forfeited by WU

## Missouri Southern (11-21-1)

10.17.1970 T 21-21 A  
10.16.1971 L 14-10 H  
10.21.1972 L 14-3 H  
10.19.1973 W 9-3 A  
11.2.1974 W 35-17 H  
11.1.1975 L 21-9 A  
10.23.1976 L 35-21 A  
10.8.1977 L 38-21 H  
10.7.1978 L 20-7 A  
11.10.1979 W 20-19 H  
11.8.1980 L 35-9 A  
10.3.1981 L 12-0 H  
10.2.1982 L 20-0 H  
11.12.1983 W 24-10 H  
11.10.1984 W 31-29 A  
9.28.1985 W 19-6 H  
9.27.1986 W 25-7 A  
10.24.1987 L 32-14 H  
10.22.1988 W 35-23 A  
9.23.1989 L 23-6 A  
9.22.1990 L 30-6 A  
10.5.1991 L 31-6 H  
10.3.1992 L 44-14 A  
10.30.1993 L 36-21 H  
10.29.1994 L 38-16 A  
11.11.1995 L 25-0 H  
11.16.1996 L 32-31 A  
10.23.1997 L 17-14 H  
10.24.1998 W 49-37 A  
9.18.1999 W 35-28 H  
9.16.2000 W 24-22 A  
9.22.2001 W 29-28 H  
9.28.2002 L 52-28 A

**Note:** Dates for games only go back to the 1961 season.