

**THE COACHES**



**Chipman's Profile**

<b>Full Name</b>	Robert A. Chipman
<b>Birthdate</b>	May 18, 1951
<b>Birthplace</b>	Petoskey, Mich.
<b>Wife</b>	Carol
<b>Children</b>	Kelsey and Bobby
<b>Education</b>	Kansas State 1973
<b>Coaching Record</b>	610-205 (.748) 27th season at Washburn
<b>Honors</b>	MIAA Coach of the Year 1992, 1993, 2004 NABC District Coach of the Year 1993, 2004

Bob Chipman, one of college basketball's winningest coaches, begins his 28th season at the helm of the Ichabod basketball program. His first win in 2006-07 will make him the second winningest coach as a member of the MIAA. Chipman has 379 wins while coaching as a member of the MIAA.

Chipman, the all-time winningest coach in Washburn University's basketball history, enters the season with a career record of 620-221 (.737).

With the Ichabods' 82-62 win over Southwest Baptist on Jan. 19, 2005 Chipman became the tenth coach in Division II to reach 600 wins. Chipman enters this season ranked fourth in victories and fourth by winning percentage among active NCAA Division II coaches. He is 13th in all-time winning percentage and 9th in all-time Division II victories.

Chipman has guided his teams to 22 20-win seasons, including seven in a row from 1983-84 to 1989-90, and four in a row from 1991-92 to 1994-95 and seven in a row from 1998-99 to 2004-05. Chipman's teams have made 14 national tournament

appearances, 10 in the NCAA and four in the NAIA. His teams have averaged 23 wins a year and his 10-16 record last year marked his only losing season in 27 years.

Chipman joined the Washburn staff in 1976 as an assistant to longtime head coach Glenn Cafer. He served as assistant coach for three seasons, in addition to being an associate professor of physical education, softball and men's tennis coach, and facilities coordinator. Chipman was promoted to head coach in April 1979 when Cafer was appointed director of athletics. Chipman

enjoyed a banner season in 1986-87, capping a 35-4 campaign with an NAIA national championship crown. A 90-59 win over Marymount that season gave him career victory No. 173, making him the winningest coach in Washburn history. Chipman was well-recognized for his accomplishments, garnering conference, district, area and national coach of the year honors.

In addition to the coaching awards obtained after the 1986-87 season, Chipman

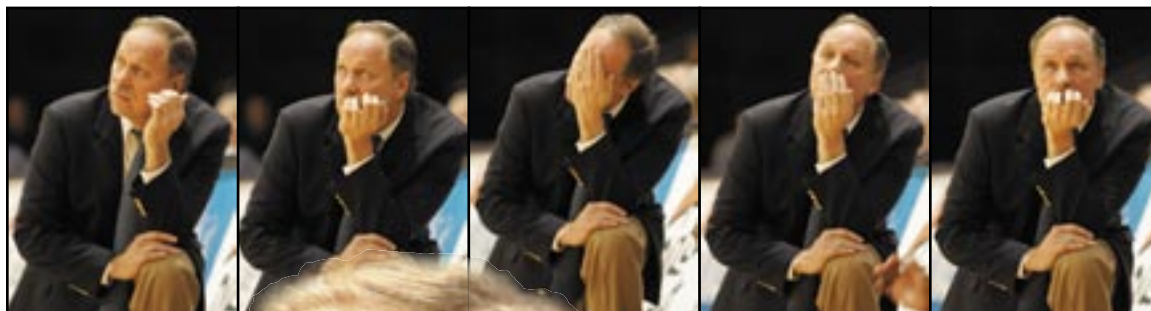
Year	W/L	MIAA	Postseason
1979-80	20-8	--	--
1980-81	21-8	--	--
1981-82	22-9	--	NAIA National Tournament
1982-83	18-12	--	--
1983-84	24-9	--	--
1984-85	26-9	--	--
1985-86	24-8	--	--
1986-87	35-4	--	<b>NAIA National Champions</b>
1987-88	27-4	--	--
1988-89	24-9	--	NAIA National Tournament
1989-90	20-12	--	NAIA National Tournament
1990-91	16-13	9-7 (6th)	MIAA Tournament Semifinals
1991-92	27-5	12-4 (1st)	NCAA Tournament Regional Finals
1992-93	27-5	13-3 (1st)	NCAA Elite Eight Quarterfinals
1993-94	29-4	15-1 (1st)	NCAA Elite Eight Semifinals
1994-95	22-8	13-3 (t-1st)	NCAA Tournament Regional Semifinals
1995-96	16-11	9-7 (t-3rd)	MIAA Tournament Quarterfinals
1996-97	24-9	15-3 (1st)	NCAA Tournament Regional Semifinals
1997-98	19-9	11-5 (4th)	MIAA Tournament Semifinals
1998-99	20-10	11-5 (4th)	MIAA Tournament Quarterfinals
1999-00	23-7	14-4 (2nd)	NCAA Tournament Regional Semifinals
2000-01	29-5	15-3 (1st)	NCAA National Finals
2001-02	20-8	12-6 (t-3rd)	MIAA Tournament Semifinals
2002-03	26-6	15-3 (1st)	NCAA Tournament Regional Semifinals
2003-04	27-5	15-3 (1st)	NCAA Tournament Regional Semifinals
2004-05	24-8	14-4 (t-1st)	NCAA Tournament Regional
2005-06	10-16	4-12 (9th)	--
<b>Totals</b>	<b>620-221</b>	<b>201-72</b>	<b>1 National Title, 9 MIAA Titles</b>
<b>27 Seasons</b>	<b>.737</b>	<b>.736</b>	<b>10 NCAA Tournament Appearances</b>



9 MIAA Titles, 10 NCAA Tournament Appearances



## 2006-07 Ichabods Basketball



was named MIAA coach of the year following the 1992, 1993 and 2004 seasons. He was named Kodak district coach of the year by the National Association of Basketball Coaches (NABC) in 1993 and the men's four-year coach of the year by the Kansas Basketball Coaches Association (KBCA) in 1994 and 2001.

His success at the collegiate level has brought Chipman the opportunity to coach on an international level as well. He served a second stint as an assistant coach for the U.S. entry in the Pan

### Milestone Wins **1**

88-58 over  
Concordia College  
Nov. 30, 1979

**100**

65-51 over  
Missouri Southern  
Feb. 18, 1984

**173\***

90-59 over  
Marymount  
Jan. 26, 1987.

**190\*\***

79-77 over  
West Virginia State  
March 17, 1987

**200**

82-67 over  
Pittsburg State  
Jan. 15, 1988

**250**

83-64 over  
Tabor College  
Jan. 3, 1990

**300**

95-70 over  
Missouri Southern  
Feb. 29, 1992

**350**

98-84 over  
Missouri-St. Louis  
Feb. 12, 1994

**400**

69-59 over  
Florida Southern  
Nov. 9, 1996

**450**

82-46 over  
Southwest Baptist  
Jan. 2, 1999

**500**

82-62 over  
Southwest Baptist  
Feb. 3, 2001

**550**

84-74 over  
Missouri-Rolla  
Feb. 8, 2003

**600**

73-64 over  
Southwest Baptist  
Jan. 19, 2005

\*Became the all-time  
winningest coach in  
Washburn History  
\*\*NAIA National  
Championship game

Head Coach Bob Chipman

THE COACHES

www.wusports.com

## Washburn Coaching Records

### By Year

COACH • YRS	REC	PCT
Harry C. Bryd •05-21	91-94-3	.492
Dwight Ream •21-22	10-8	.555
Mike Vosburg •22-23	6-7	.462
A.L. Lonborg •23-27	49-12-1	.798
Roy Wynne •27-30	29-20	.592
George Gardner •30-33	19-28	.404
Elmer Holm •33-36	21-35	.375
Dee Errikson •36-46	64-119	.350
Adrian Miller •46-51	64-45	.587
Marion McDonald •51-60	107-74	.591
Dick Godlove •60*	1-2	.333
Norm Short •60-66	45-75	.375
Gordon Stauffer •66-67	15-6	.714
Glenn Cafer •67-79	172-145	.542
Bob Chipman •79-pr	620-221	.737

\*Godlove took over for McDonald with three games left in the 1960 season when McDonald was sidelined with health problems.

### By Percentage

COACH-YRS	REC	PCT
1. Lonborg •23-27	49-12-1	.798
2. Chipman •79-pr	620-221	.737
3. Stauffer •66-67	15-6	.714
4. Wynne •27-30	29-20	.592
5. McDonald •51-60	107-74	.591
6. Miller •46-51	64-45	.587
7. Ream •21-22	10-8	.555
8. Cafer •67-79	172-145	.542
9. Byrd •05-21	91-94-3	.492
9. Vosburg •22-23	6-7	.462
10. Gardner •30-33	19-28	.404
11. Holm •33-36	21-35	.375
12. Short •60-66	45-75	.375
13. Erikson •36-46	64-119	.350
14. Godlove •60	1-2	.333

### By Wins

COACH • YEARS	WINS
1. Chipman • '79-pr	620
2. Cafer • '67-79	172
3. McDonald • '51-60	107
4. Errikson • '36-46	64
Miller • '46-51	64
6. Lonborg • '23-27	49
7. Short • '60-66	45
8. Wynne • '27-30	29
9. Holm • '33-36	21
10. Gardner • '30-33	19
11. Stauffer • '66-67	15
12. Ream • '21-22	10
13. Vosburg • '22-23	6
14. Godlove • '60*	1

American Games during the summer of 1991, earning a bronze medal. In 1983, he was an assistant to the team that won the gold medal. He helped coach the U.S. entry in the World University Games to a gold medal in 1989. In



1985, he was an assistant coach for the Amateur Basketball Association / USA Jones Cup Team that won a silver medal.

Chipman holds both bachelor's and master's degrees from Kansas State University.

Chipman has always looked to



Kansas basketball players first as evident from the 10 Kansas players on this year's roster. In his 27 years as the Ichabod's head coach, he has spent more than \$1 million in scholarship money for basketball players from the Sunflower State.

The 1973 graduate earned two letters as a guard while playing for Wildcat coaching legend Jack Hartman. He played his first two seasons of college ball at Flint Community Junior College, in his hometown of Flint, Mich.

Chipman and his wife, Carol, live in Topeka with their son Bobby. Their daughter Kelsey is a freshman on the Kansas State volleyball team.

### 20-Win Seasons at Washburn

YEAR	RECORD	COACH	YEAR	RECORD	COACH
1968-69	20-10	Cafer	1992-93	27-5	Chipman
1978-79	21-6	Cafer	1993-94	29-4	Chipman
1979-80	20-8	Chipman	1994-95	22-8	Chipman
1980-81	21-8	Chipman	1996-97	24-9	Chipman
1981-82	22-9	Chipman	1998-99	20-10	Chipman
1983-84	24-9	Chipman	99-2000	23-7	Chipman
1984-85	26-9	Chipman	2000-01	29-5	Chipman
1985-86	24-8	Chipman	2001-02	20-8	Chipman
1986-87	35-4	Chipman	2002-03	26-6	Chipman
1987-88	27-4	Chipman	2003-04	27-5	Chipman
1988-89	20-8	Chipman	2004-05	24-8	Chipman
1989-90	20-12	Chipman	<b>Note: Bob Chipman has had 22 of the 24 20-win seasons in Washburn's basketball history.</b>		
1991-92	27-5	Chipman			



# 2006-07 Ichabods Basketball

## MIAA Schools

<b>Central Missouri</b>	<b>21-13</b>
<b>Emporia State</b>	<b>42-14</b>
<b>Fort Hays State</b>	<b>26-17</b>
<b>Missouri Southern</b>	<b>36-12</b>
<b>Missouri Western</b>	<b>32-24</b>
<b>Northwest Missouri</b>	<b>27-13</b>
<b>Pittsburg State</b>	<b>40-13</b>
<b>Southwest Baptist</b>	<b>22-6</b>
<b>Truman State</b>	<b>28-11</b>

**Totals 297-126 (.702)\***  
Includes a 23-4 record against Missouri-Rolla while they were a member of the MIAA

## Kansas Schools

Avila	6-0
Baker	16-0
Benedictine	21-0
Bethany	3-0
Bethel	6-0
Friends	15-1
Kansas	0-3
Kansas State	0-1
Kansas Wesleyan	1-0
Marymount	16-7
McPherson	3-0
MidAmerica Nazarene	4-2
Newman	15-2
Ottawa	7-0
St. Mary of the Plains	1-0
Sterling	5-0
Tabor	10-2
<b>Totals</b>	<b>129-18 (.878)</b>

## Other Schools

Auburn-Montgomery	1-0
Azusa Pacific	0-1
Barry	1-0
Bellevue	1-0
Birmingham-Southern	1-0
Briar Cliff	2-1
Bringham Young-Hawaii	0-2
Buena Vista	1-0
Cabrini	1-0
Cal State-Bakersfield	1-1
Cal St.-Dominguez Hills	1-0
Cal State-Los Angeles	1-0
Cal State-Stanislaus	1-1
Cameron	1-1
Central Oklahoma	5-4
Central Arkansas	0-1

Central Washington	2-0
Colorado	0-1
Colorado Baptist	1-0
Colorado Christian	1-0
Colorado College	1-0
Colorado Mines	1-0
Concordia	2-0
Dakota State	1-0
Doane	2-0
Dowling	1-0
Drury	8-5
East Stroudsburg	1-0
Eastern New Mexico	3-0
Evansville	0-1
Evangel	2-0
Florida Southern	1-0
Florida Tech	1-0
Fontbonne	1-0
Franklin Pierce	1-0
Gardner-Webb	0-1
Geneva	1-0
Georgetown	0-1
Graceland	1-0
Grand Valley State	1-0
Grand View	1-0
Hawaii Pacific	1-0
Hawaii-Loa	1-0
Hawaii-Hilo	1-1
Henderson State	1-0
Hendrix	1-0
Huron	1-0
Illinois Tech	0-0
IUPUI	1-0
Johnson C. Smith	1-0
Kentucky Wesleyan	0-2
LeMoyne-Owen	1-0
Lincoln	15-0
Lincoln-Memorial	1-0
Lipscomb	0-1
Lock Haven	2-0
Lynn	0-2
McNeese State	0-1
Metro State	0-1
Minnesota-Duluth	1-0
Mississippi College	0-1
Missouri Baptist	3-0
Missouri-Kansas City	1-0
Missouri-Rolla	23-4
Missouri-St. Louis	11-1
Montana State-Billings	1-0
Nebraska-Kearney	11-9
Nebraska-Omaha	1-0

North Alabama	1-0
Northeastern State	0-1
Northern Kentucky	0-1
Norfolk State	1-0
Oakland	1-0
Oklahoma State	1-0
Okla. Panhandle State	1-0
Park College	1-1
Quincy	0-1
Regis	2-0
Rockhurst	11-2
Saginaw Valley State	1-0
St. Cloud	1-0
St. Mary's (Texas)	2-0
St. Michaels	1-0
St. Thomas Aquinas	0-1
Seattle Pacific	2-1
Sioux Falls	1-0
S. Carolina at Spartanburg	1-0
Southeast Missouri State	0-2
S. California College	0-1
S. Illinois-Edwardsville	1-1
Southern Indiana	1-1
Southern Nazarene	1-0
Southern Tech	1-0
Southeastern Oklahoma	1-0
Southwest Minnesota St.	1-1
Spring Hill	0-1
Stephen F. Austin	1-0
Tarleton State	1-0
Taylor	1-0
Texas-Pan American	0-1
Texas A&M-Commerce	1-1
Texas A&M-Kingsville	2-0
Troy State	0-1
Wayne State	17-4
West Texas A&M	2-0
West Virginia State	1-0
West Virginia Tech	2-0
Western Washington	1-1
William Carey	1-0
William Jewell	2-1
Winston-Salem	1-0
Wisconsin-Eau Claire	0-1
Xavier	0-1
<b>Totals</b>	<b>194-77 (.716)</b>



**Auguste's Profile**

**Full Name**

Ewan Raul Auguste

**Birthdate**

July 1, 1976

**Birthplace**

Castries, St. Lucia, West Indies

**Wife**

Stephanie

**Children**

Darrius, Sofia

**Education**

Washburn, 2002

**Degree**

Computer Science Information

**Honors**

First Team All-America Selection

2000, 2001

MIAA Most Valuable Player

2000, 2001

MIAA 1st Team

2000, 2001

All-Region 1st Team

2000, 2001

Former Ichabod and two-time All-American Ewan Auguste returns to the Washburn bench in his fourth year as the Ichabods' assistant coach.

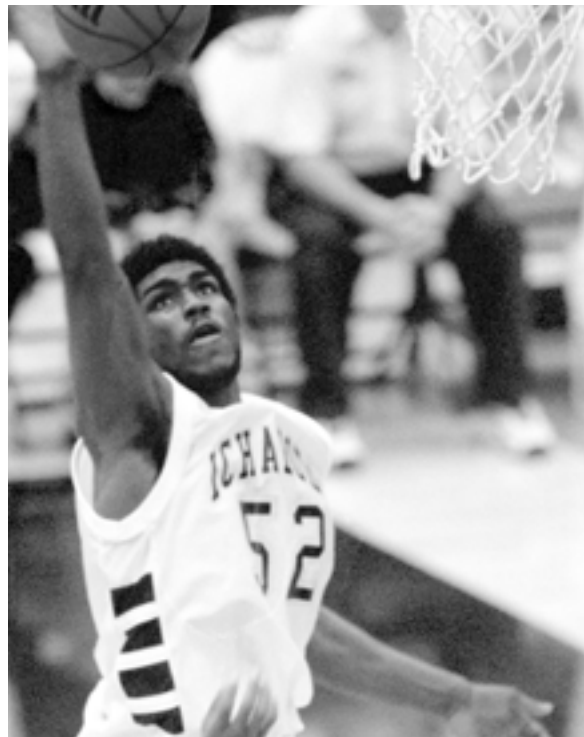
Auguste finished his career as the No. 4 scorer in Washburn history with 1,636 points and No. 3 in rebounds with 888. For his career, Auguste averaged 13.4 ppg and 7.3 rpg.

He finished his career in 2001 and was a two-time MIAA most valuable player following his junior and senior seasons.

In his four years as an Ichabod, Auguste led Washburn to one MIAA championship and two NCAA tournament appearances, including the 2001 championship game.

Auguste will help in the Ichabods recruiting efforts, team travel and assist in the on-floor coaching duties at Washburn. He will work primarily with the post players.

Auguste lives in Topeka with his wife Stephanie and their son Darrius and daughter Sofia.



Year	W/L	MIAA	Postseason
2003-04	27-5	15-3 (1st)	NCAA Tournament Regional Semifinals
2004-05	24-8	14-4 (t-1st)	NCAA Tournament Regionals
2005-06	10-16	4-12 (9th)	--
<b>Totals</b>	<b>61-29</b>	<b>33-19</b>	<b>2 MIAA Titles</b>
<b>3 Seasons</b>	<b>.678</b>	<b>.635</b>	<b>2 NCAA Tournament Appearances</b>