

This is Washburn



Media Information	2
About Washburn	4-5
Coaching staff	6
Athletic Director	6
2003-04 in review	7
Athletic staff	8-9
Washburn directory	10
About Topeka	11
Athletic facilities	12-13
Lady Blues Field	14

About the MIAA



2003 MIAA honors	37
2003 team leaders	38
2003 individual leaders	38
2003 MIAA record book	39
About the MIAA	40

2004 Washburn Soccer



Coaching staff	15-17
Tim Collins	15-16
Assistant coaches	17
2004 Lady Blues	18-30
Lady Blues roster	18
Pronunciation Guide	18
Squad breakdown	19
Season preview	20
Returnees	21-28
Newcomers	29-30

2004 Opponents



2004 Non-conference	42
2004 MIAA	43-45
2004 MIAA composite	46
2004 Opponent series	46

2003 in review



2003 in review story	32
Season stats	33
Match results	33
Miscellaneous stats	34
Season box scores	35-36

Lady Blues Soccer History



Team records	48
Single-season records	49
Career charts	50-51
Game records	52
Year-by-year game results	53
Records by class	53
All-time roster	54
All-time jersey assignments	55
All-time series records	56

Credits

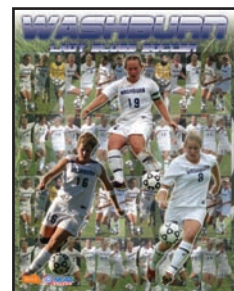
The 2004 Washburn University Lady Blues Media Guide was written and designed by Gene Cassell, sports information director. The book was edited by Regina Cassell, Brad Noller, Adrienne Collie and Jes Channels.

Players' mug shots and action photos were also taken by Cassell. Campus photos were provided by Peggy Clark, Washburn University photographer and Jes Channels, Sports Information Intern. Coaches and player mugs of opposing schools courtesy of each respective school's sports information department. Topeka photos courtesy of Topeka Visitor and Convention Bureau. Heartland Park photos courtesy of Heartland Park, Topeka.

The guide was printed by Capital Graphics, Inc., Topeka.

On the cover

On the cover for the 2004 season are sophomores No. 16 Amanda Geist (midfielder, Topeka), No. 19 Meagan Horvath (defender, Olathe, Kan.) and No. 8 Jenna Lawless (forward, Topeka.)



Media Information

The 2004 Washburn University Soccer Media Guide is intended to provide information for writers, broadcasters, sports editors, sports information personnel and fans who follow the Lady Blues. Material in the guide was current as of the printing deadline Aug. 10.

Additional information is available in the Washburn Sports Information Office and through weekly releases available to personnel from accredited media outlets covering the Lady Blues.

Washburn University is in Topeka, Kan., at the intersection of 21st Street and Washburn Avenue. The Washburn Soccer Field is south of Lee Arena. Parking for the facility is adjacent to Washburn Avenue.

The Washburn University Sports Information Office is

located in room 200 in Petro Allied Health Center. Office hours are from 8 a.m. to 5 p.m., Monday through Friday. Phone: 785.231.1010 x1791; Fax:

785.231.1091. You may e-mail the SID office at gene.cassell@washburn.edu.

Media Credentials are not required for covering Washburn Softball Lady Blues.

Media Services include a game scorecard and lineups, plus statistics and game notes.

Postgame Interviews with Head Coach Tim Collins are available to media personnel after his meeting with the team immediately following the game.

Players will be made available at the field and will be brought to media members.



washburn quick facts

General Information

Name of School Washburn University
City/Zip Topeka, KS 66621
Founded 1865
Enrollment 7,002
Nickname Lady Blues
School Colors Yale Blue and White
Home Pitch/Capacity . . Washburn Soccer Field / 250
Surface Natural Grass
Affiliation NCAA Division II
Conference . . Mid-America Intercollegiate Athletics Association
President Dr. Jerry Farley
Alma Mater, Yr. Oklahoma '68
Athletics Director Loren Ferre'
Alma Mater, Yr. Texas Christian '71
Athletic Dept. Phone 785.231.1010
Ext. 1135
Ticket Office Phone 785.231.1092

History

First year of Soccer 2003
Overall all-time record 4-13-1 (.250)
No of years in national playoffs 0
Last Postseason Opponent n/a

Coaching Staff

Head coach Tim Collins
Alma mater, Yr. Ottawa, 1991
Record at school (yrs) . . 4-13-1 (.250), 2nd season
Career record (yrs). 4-13-1 (.250), 2nd season
Soccer office phone . . 785-231-1010 x1756
Best time/day to call 9 a.m. to noon
Assistant Coaches Jessica Wilhelm (Manhattan Christian, '04)
. Amber McGinnis (Ottawa, '04)
Student Assistant Coaches . . Josh Logsdan

Sports Information

Sports information director . . . Gene Cassell
SID office phone . . 785.231.1010 Ext. 1791
SID E-Mail . . . gene.cassell@washburn.edu
Home phone 785.357.5094
Assistant SID Brad Noller
Home phone 785-228-2304
Soccer SID Cassell
office phone same
home phone same
sid fax 785.231.1091
press box phone n/a
sid mailing address . . 1700 College; Topeka, Kan. 66621
overnight address . . . Petro Allied Health Center, Room 200 D-E
Topeka, KS 66621
Washburn Athletics Web Site www.washburn.edu/athletics

covering the Lady Blues

PRINT

Topeka Capital-Journal

785.295.1188
785.295.1230 Fax
616 Jefferson, Topeka, KS 66607
1.800.777.7171
Sports Editor: Eric Turner
WU Beat Writer: Ken Corbitt
785.295.1123

Kansas City Star

816.234.4355
816.234.4360 Fax
1729 Grand Ave., Kansas City, MO 64108
Small College Beat Writer: David Boyce

Salina Journal

785.827.6363
785.827.6060 Fax
P.O. Box 779, Salina, KS 67401
800.827.6363

Wichita Eagle

800.825.6397
316.268.6536 Fax
825 East Douglas, Wichita, KS 67201
Small College Beat Writer

Hutchinson News

800.766.5772
316.662.4186 Fax
P.O. Box 190, Hutchinson KS, 67504
Sports Editor

Washburn Review

785.233.3211
785.231.1035 Fax
1700 SW College, Topeka, KS 66621
Sports Editor

RADIO STATIONS

WIBW (580AM/94.5FM)

785.297.9797
785.272.3536 Fax
P.O. Box 119, Topeka, KS 66601
Sports Department: Bruce Steinbrock

TV STATIONS

KSNT-27 (NBC)

785.582.3222
785.582.5283 Fax
P.O. Box 2700, Topeka, KS 66601

Sports Director: Lance Veaser

WIBW-13 (CBS)

785.272.7030
785.271.0418 Fax
P.O. Box 119, Topeka, KS 66601
Sports Director: Mark Ewing

WIRE SERVICES

Associated Press

800.852.4844
816.421.3590 Fax
215 West Pershing, Kansas City, MO 64108

Sportsticker

800.367.8935
800.336.0383 Fax

lady blues print/broadcast media roster



0 Jenna Hatlestad
5-6, So., Goalkeeper
Olathe, Kan.



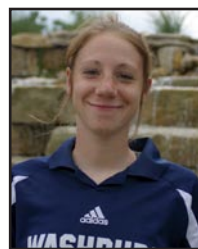
1 Erica Painting
5-5, So., Goalkeeper
Lee's Summit, Mo.



2 Jamie Francis
5-5, So., Midfielder
Topeka, Kan.



4 Laura Barnaby
5-3, So., Defender
Topeka, Kan.



5 Emily Leeper
5-5, Fr., Forward
Topeka, Kan.



6 Megan Garlow
5-2, Fr., Forward
Salina, Kan.



7 Jolene Lutz
5-7, Fr., Defender
Topeka, Kan.



8 Jenna Lawless
5-7, So., Midfielder
Topeka, Kan.



9 Stephanie Bruegger
5-3, So., Midfielder
Overland Park, Kan.



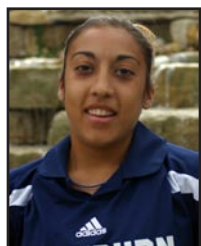
10 Lauren Schwindt
5-5, So., Midfielder
McPherson, Kan.



11 Celese Siebert
5-4, So., Forward
Lawrence, Kan.



12 Erica Schmidt
5-6, So., Defender
McPherson, Kan.



14 Brie Forman
5-6, Fr., Defender
Topeka, Kan.



15 Amanda Broome
5-6, So., Midfielder
Topeka, Kan.



16 Amanda Geist
5-3, So., Midfielder
Topeka, Kan.



17 Jolene Silovsky
5-9, So., Forward
Topeka, Kan.



19 Meagan Horvath
5-5, So., Defender
Olathe, Kan.



21 Anna Fahey
5-4, So., Midfielder
Parkville, Mo.



22 McKinley Rainen
5-6, Fr., Midfielder
Lenexa, Kan.



23 Deidre Gorynski
5-9, So., Midfielder
Topeka, Kan.



24 Virginia Barnes
5-9, Jr., Midfielder
Topeka, Kan.



Tim Collins
Head Coach
4-13-1 (.250), 2nd year
Ottawa, 1991



Jessica Wilhelm
Assistant coach, 1st year,
Manhattan Christian,
2004



Josh Logsdon
Student assistant coach
2nd year



About washburn

Washburn University was established in February 1865 as Lincoln College by a charter issued by the State of Kansas and the General Association of Congregational Ministers and Churches of Kansas. A two-story brick building on the northeast corner of 10th and Jackson Streets was soon erected and the first classes began in January 1866. In 1868, the school was renamed Washburn College, in recognition of a \$25,000 donation by Ichabod Washburn, a church deacon and resident of Worcester, Mass.

The university was granted a permanent location in 1865 when Topekan Col. John Ritchie donated a 160-acre site, which at the time was a considerable distance southwest of the city. Construction on the first building began in 1872, with occupancy taking place in 1874. For the next two decades, college President Peter McVicar conducted an aggressive development campaign. His efforts resulted in the establishment of numerous Victorian limestone structures which characterized the campus for the next 90 years.

Expansion of the school was constant. The School of Law was organized in 1903, as was a School of Fine Arts and a medical school, which educated physicians until 1913. During the next three decades structures such as the Mulvane Art Museum, Benton Hall and Whiting Field House were added to the campus. In June 1966, a tornado struck Topeka and several historic buildings on campus were demolished. The Washburn community rallied and financial support from friends and alumni made possible



the rebuilding of many school facilities during the coming years. Today, university facilities offer more than one million square feet of modern academic and support space.

In 1941, the citizens of Topeka endorsed Washburn by voting to establish a municipal university, supported in part by the city and governed by a local board of regents. In 1952, the Washburn Board of Regents officially changed the name of the school to Washburn University of Topeka. In 1999, the university's primary funding was moved from city property tax to county sales tax sources, with the school retaining status as a municipal subdivision of the state. In addition to local financial support, Washburn has received state funds since 1961, which have been coordinated by the Kansas Board of Regents since 1991. Washburn is governed by its own nine member Board of Regents.

Washburn provides broadly-based liberal arts and professional education through more than 190 certificate, associate, baccalaureate, master's and juris doctor programs through the College of Arts and Sciences and the Schools of Law, Business, Nursing and Applied Studies. Ninety-seven percent of the faculty hold a doctorate or the highest degree available in their discipline.



Dr. Jerry B. Farley
University President

Jerry Farley became the 14th President of Washburn University in 1997 following an extensive career in finance and business affairs at several Oklahoma higher education institutions. Aside from a full schedule of Washburn responsibilities, Dr. Farley speaks and teaches around the United States on topics related to Higher Education Finance, Auditing, Management and Leadership. He is a C.P.A. and has been the president and chair of the board of several state and national professional

organizations. He has authored or co-authored numerous articles and books on finance and accounting.

Dr. Farley holds a degree in finance and accounting, an MBA, and a Ph.D. in Higher Education Administration - all from the University of Oklahoma.

Serving on local and state boards has always been a priority for Dr. Farley. He is past president of the Topeka Chamber of Commerce. He has served on the board of directors of Red Cross, American Cancer Society, Boy Scouts, United Way and economic development corporations including Go Topeka.

He is the recipient of awards for outstanding contributions in public service, accounting, and higher education.

Academic Majors

* Denotes fields in which Secondary Education teaching certificates are available.
Degrees are listed after majors (C=Certificate of Completion)

Denotes joint programs with Kaw Area Technical School

Accounting, BBA, MBA	Law, JD
Addiction Counseling, C, AAS, BAS	Legal Office Administration, C
Adult Care Home Administrator, C, BAS	Legal Studies, C, AA
Allied Health C, AS, BHS	Liberal Studies, MLS
Anthropology, BA	Management, BBA
Art History, BA	Marketing, BBA
Art*, BA, BFA	Mass Media, BA
Athletic Training, BS	Mathematics*, BA, BS
Banking, AAS	Medical Imaging, BHS
Biology*, BA, BS	Medical Office Administration, C
Business Administration, MBA	Medical Technology, BS
Business Education, B.Ed	Mental Health and Disabilities, AAS, BAS
Cardiac Sonography, C	Military and Strategic Studies, C
Chemistry*, BA, BS	Music Education, BM
Clinical Psychology, MA	Music Performance, BM
Communication, BA	Music, BA
Computer Information Science, BS	Natural Science and Mathematics, AA
Computer Information Systems, AA, BA, BS	Non-Profit Management, C, BPA (in association with Public Administration)
Correctional Administration, MCJ	Nursing, BSN
Criminal Justice, AA, BSCJ	Office Administration C, AA #
Criminal Justice, MCJ	Philosophy, BA
Curriculum and Instruction, M.Ed.	Physical Education*, BA, B.Ed, BS
Design Technology, AAS #	Physical Therapy Assistant, AS
Developmental Disabilities, AAS, BAS	Physics*, BA, BS
Diagnostic Medical Sonography, C	Political Science, BA
Early Childhood Education, AA	Pre-Dentistry
Early Childhood Education, B.Ed	Pre-Engineering
Economics, BA	Pre-Law
Economics, BBA	Pre-Medicine
Education, M.Ed.	Pre-Optometry
Educational Administration, M.Ed	Pre-Pharmacy
Elementary Education, B.Ed	Pre-Theology
English*, BA	Pre-Veterinary Medicine
Executive Administrative Assistant, C	Psychology*, BA, MA
Finance, BBA	Public Administration, C, BP
Food Service, AA #	Public Health Nursing, C
Forensic Chemical Science, BS	Purchasing, C, AAS #
French*, BA	Radiation Therapy, C
General Business, BBA	Radiologic Technology, AS
General Science, BS	Reading, M.Ed.
General Sonography, C	Religious Studies, BA
German*, BA	Respiratory Therapy, AS
Gerontology, AAS, BAS	RN Articulation, BSN
Health Information Technology, C, AS	RN Refresher
Health Services Administration, BHS	School Nurse Certification, C
History*, BA	Secondary Education, M.Ed
Human Services, C, AAS, BAS	Social Work, BSW
Humanities and Creative and Performing Arts, AA	Social Work, MSW
Industrial Technology, AAS #	Sociology, BA
Integrated Studies, BIS	Spanish*, BA
Interrelated Special Education, M.Ed.	Studio Art, BA
Law Enforcement, MCJ	Technology Administration, BAS
	Theatre, BA
	Vascular Sonography, C
	Victim/Survivor Services, C, AAS, BAS
	Word Processing, C
	Youth Services, AAS, BAS





Steve Anson
Baseball



Bob Chipman
Basketball (M)



Craig Schurig
Football

2003-04 Season Flashback

Team	Overall W-L	MIAA	MIAA Finish	Postseason
Baseball	26-23	15-15	6th	None
Basketball-M	27-5	15-3	1st	NCAA Rnd. 32
Basketball-W	26-5	15-3	1st	NCAA Rnd. 32
Football	5-6	3-6	7th	None
Golf	131-40-1	35-5-1	1st	NCAA Nationals
Softball	4-13-1	2-11-1	8th	None
Softball	32-25	8-10	8th	MIAA Tourney
Tennis-M	18-8	2-2	2nd	NCAA Sweet 16
Tennis-W	22-6	5-1	1st	NCAA Sweet 16
Volleyball	26-10	9-7	5th	MIAA Tourney
Totals	317-141-2 (.688)	109-63-2 (.679)		

**Overall athletic department
winning percentage - .688**



Chris Herron
Volleyball



Ron McHenry
Basketball (W)



Doug Hamilton
Golf



Jennifer Hastert
Tennis (M/W)



Tim Collins
Soccer (W)



Lisa Carey
Softball



Loren Ferre'
Athletic Director

Loren Ferre' became Washburn's director of athletics in February of 1996 after a six-year appointment at Black Hills State University in Spearfish, S.D. Ferre' is a dynamic leader who has implemented many internal changes within the athletic department since arriving on campus. He has put increasing scholarships and departmental fund-raising at the top of his list.

At Washburn, Ferre' has been instrumental in the establishment of a strong Ichabod Club support team and the raising of funds for athletic scholarships.

While at BHSU, Ferre' was also director of the Donald E. Young Sports Fitness Center, a 172,000 square foot, \$10.2 million facility. During his Black Hills tenure, the athletics department nearly tripled its outside revenue, including large increases in ticket sales and scholarship funding. All 10 varsity teams won a conference title in his final three years.

Before joining the staff at Black Hills State, Ferre' spent 17 years at the University of North Texas. He was the director of the Coliseum (1987-90) was the associate and assistant director since 1980. He held the post of event coordinator (1978-80).

Ferre' is a 1971 graduate of Texas Christian University, earning a bachelor of arts degree. He earned a master's in journalism from North Texas in 1982.

Ferre' is the NCAA Division II Men's Basketball South Central Regional Chairman serving his third year on the committee last season.

Ferre' and his wife Sarah, have two daughters, Caitlin and Hope.

THE ICHABOD CLUB

WASHBURN ATHLETICS

The Ichabod Club is a booster club that works to promote Washburn University Athletics and provides financial support

to its athletic programs. Membership in the Ichabod Club has played a major role in supporting the annual scholarship drive and making a difference in the lives of Washburn student-athletes for the past 20 years.

Washburn Athletics depends upon the annual contributions to the Ichabod Club Scholarship Fund to continue offering scholarship aid to our student-athletes.

The mission of the Ichabod Club is simply to provide the scholarship assistance to young men and women student-athletes (tuition, fees, books, room and board) unless the contribution is restricted to a specific sport or some other specific purpose. All gifts to the Ichabod Club are tax deductible to the full extent allowable by law.

Opportunities for alumni, friends, parents and boosters to become involved with the Ichabod Club program are available through pregame parties, golf tournaments, the Ichabod Club newsletter, monthly luncheons, the kick-off party and other special events.

For more information, call the Washburn Athletic Department at 785.231.1135.

Washburn wins 4 MIAA Titles for second straight season, 5 NCAA appearances

Football – 5-6 / 3-6 MIAA (7th)

- MIAA Second Team All-MIAA: Tim Watts, Trent Hearn
- MIAA Honorable Mention All-MIAA: Tyrone Barrett, Mike Odupitan, Eric Taylor, Grant Gould, Josh Looney, Fletcher Terrell
- MIAA Freshman of the Year: Trent Hearn
- MIAA Commissioner's Academic Honor Roll: Joe Corcoran, Morgan Dewey, Matt Duler, Dustin Hickel, Chris Huelsman, Josh Looney, Blake Meyer, Brooks Myers, Brian Peel, Kevin Pierce, Tyler Schuerman, Eric Taylor, Adam Toby, Tim Watts, Jeff Wimpy, Andre Zandevakili
- CoSIDA Academic First Team All-Region: Matt Duler, Eric Taylor
- CoSIDA Academic Second Team All-America: Eric Taylor
- Academic All-MIAA: Josh Looney, Eric Taylor
- Offensive Team MVP: Trent Hearn
- Defensive Team MVP: Morgan Dewey
- Special Team MVP: Mike Odupitan

Volleyball – 26-10 / 9-7 MIAA (5th)

- First Team All-MIAA: Dani McHenry
- Honorable Mention All-MIAA: Alecia Barron, Anna Neufeld, Susan Crooks
- MIAA Commissioners' Academic Honor Roll: Alecia Barron, Kandice Connell, Dani McHenry, Anna Neufeld, Ann Weygint
- American Volleyball Coaches Association First Team All-Region: Dani McHenry
- American Volleyball Coaches Association Honorable Mention All-American: Dani McHenry
- Team MVP: Dani McHenry

Soccer – 4-13-1 / 2-11-1 MIAA (8th)

- Honorable Mention All-MIAA: Meagan Horvath, Monica Ruiz, Jenna Lawless
- Presidential Scholar: Deidre Gorynski
- Team MVP: Meagan Horvath

Men's Basketball – 27-5 / 15-3 MIAA (1st)

- First Team All-MIAA: Jeremy Cunningham
- Second Team All-MIAA: Troy Douglas, Travis Robbins
- First Team NABC All-Region: Jeremy Cunningham
- MIAA Commissioner's Academic Honor Roll: J.P. Meitner, Matt Tinsley
- MIAA Coach of the Year: Bob Chipman
- Regional Coach of the Year: Bob Chipman
- Team MVP: Jeremy Cunningham

Women's Basketball – 26-5 / 15-3 MIAA (1st)

- Second Team All-MIAA: Carla Sinta, Lora Westling
- Honorable Mention All-MIAA: Juwanna Rivers
- All-MIAA Defensive Team: April Roadhouse
- NCAA South Central Regional Team: Juwanna Rivers
- MIAA Commissioner's Academic Honor Roll: Alison Garrett, Dani McHenry, Lora Westling
- All-MIAA Academic Team: Lora Westling
- Team MVP: Juwanna Rivers

Baseball – 26-23 / 15-15 MIAA (6th)

- Second Team All-MIAA: Jerad Head, Mike Koontz
- Honorable Mention All-MIAA: Jake Lenherr, Jake Loveless, Cameron Clurman, Sam Sissom, Randy Wild
- MIAA Commissioner's Academic Honor Roll: Matt Deutsch, Adam Fennema, Jake Lenherr, Kyle Loschke, Dan Newton, David Nimz, Blake Rice, Jesse Schmidt,
- Presidential Scholar: Brian Martinek
- Team MVP: Jerad Head

Softball – 32-25 / 8-10 MIAA (8th)

- Second Team All-MIAA: Molly Gleisberg, Kala Huske
- Honorable Mention All-MIAA: Joanne, Fluker, Dara Clouse, Katie Schmidt, Ashley Webb
- MIAA Commissioner's Academic Honor Roll: Erin Pierce, Katie Schmidt, Jackie Sells, Ashley Stewart, Tiffany Whitt
- Team MVP: Dara Clouse

Women's Tennis – 22-6 / 5-1 MIAA (1st)

- First Team All-MIAA: Holly Munro (singles)
- Second Team All-MIAA: Erin Underwood (singles/doubles), Julie Huyberechts (singles/doubles), Caitlin Day (singles/doubles), Lindsay Sullivan (singles/doubles), Kris Castillo (doubles), Holly Munro (doubles)
- Honorable Mention All-MIAA: Kris Castillo (singles)
- MIAA Commissioner's Academic Honor Roll: Caitlin Day, Holly Munro, Erin Underwood
- MIAA MVP: Erin Underwood
- ITA North Central Regional Coach of the Year: Jen Hastert
- MIAA Coach of the Year: Jen Hastert
- All-MIAA Academic Team: Erin Underwood, Julie Huyberechts
- Team MVP: Erin Underwood

Men's Tennis – 18-8 / 2-2 MIAA (2nd)

- First Team All-MIAA: Brett Coleman (singles)
- Second Team All-MIAA: Rafeal Valdez (singles/doubles), Sydney Bwalya (singles), Tyler Kinder (singles), John Johnson (doubles)
- Honorable Mention All-MIAA: John Johnson (singles), Blake Edwards (singles)
- MIAA Commissioner's Academic Honor Roll: Brett Coleman, John Johnson, Tyler Kinder
- MIAA Coach of the Year: Jen Hastert
- Team MVP: Rafeal Valdez

Golf – 131-40-1 / 35-5-1 MIAA (1st)

- First Team All-MIAA: Chris McGown, Matt Warnock, Matt Johnston, Garrett Donovan
- MIAA Commissioner's Academic Honor Roll: Paul Resner, Jason Robbins, Matt Warnock
- MIAA Coach of the Year: Doug Hamilton
- All-Central Regional Team: Matt Warnock
- Recognized as having highest GPA out of all teams at NCAA Golf Championships
- Division II PING Honorable Mention All-America: Matt Warnock, Matt Johnston
- All-MIAA Academic Team: Matt Johnston, Chris McGown, Matt Warnock
- Presidential Scholar: Jason Robbins
- Team MVP: Matt Warnock

**Cumulative
Athletic
Department Grade
Point Average as
of Spring 2004**

3.03

**2002-03 MIAA
Commissioner's
Academic Honor
Roll Members**

48

**Of 232
Student-Athletes,
number who had
3.0 GPA or higher**

116

**Of 232
Student-Athletes,
number who had
3.5 GPA or higher**

50

**Of 232
Student-Athletes,
number who had
4.0 GPA or higher**

19

**Number of
Student-Athletes
to receive all-
MIAA Athletic
Honors**

60






Kerry Dickerson
Associate Director
of Athletics for
Development
785-231-1010 x1333




Janet Degginger
Assistant Athletics
Director
785-231-1010 x1790



Karmen Byers
Assistant Director of
Athletics of External
Relations
785-231-1092



Gene Cassell
Sports Information
Director
785-231-1010 x1791



Brad Noller
Assistant Sports
Information Director/
Marketing and
Promotions
785-231-1010 x1948

Kerry Dickerson

Former Ichabod assistant basketball coach Kerry Dickerson begins his second season as the Ichabod athletic department's director of development after serving six seasons on the Ichabod coaching staff. A native of Blue Springs, Mo., Dickerson was a two-year starter for the Ichabods at point guard and played on the team from 1988 to 1993. He started 38 of 116 games for Washburn and his team leadership on two MIAA championship and NCAA Division II tournament teams was a mark of success.

Janet Degginger

Janet Degginger is entering her 18th year as Washburn's assistant athletics director.

Degginger returned to her alma mater in 1987 as assistant director of athletics. In that capacity, she is responsible for managing and monitoring the eligibility of student athletes as the compliance director. During the 1995-96 academic year, Degginger served as the interim director of athletics. She also currently serves as the university's senior women's administrator.

Degginger has served on several university, conference and national committees. She is currently a member of the NCAA Professional Sports Liaison Committee and has served on a subcommittee of the NCAA Research Committee for developing a financial analysis report. She is a member of Washburn's Faculty Athletics and Financial Aid committees.

Degginger is a 1967 graduate of Washburn and has done postgraduate work at Kansas. She has a son, Preston.

Karmen Byers

Karmen Byers is in her fourth year as the Assistant Athletic Director of External Relations.

At Washburn, Byers serves as ticket manager for all sports. She also focuses on marketing and public relations for increasing interest and attendance on Ichabod and Lady Blues game nights.

Prior to joining the athletic department,

Byers worked at Atwood Publishing in Overland Park, Kan. where she was an advertising sales executive for four different publications.

Byers is a 1999 graduate of Kansas State University with a Bachelor's Degree in journalism and advertising.

She is married to former Washburn basketball player David Byers. The couple lives in Topeka.

Gene Cassell

Gene Cassell is entering his fifth full season as Washburn Sports Information Director after starting in December 1998. Cassell is a 1997 graduate from Northwest Missouri State University, where he graduated with a Bachelor of Science in journalism accompanied with a minor in broadcasting.

Beside overseeing the media relations of Washburn's 10 athletic teams, Cassell also runs game administration and is the webmaster of "The Blue Zone" - The Official Site of Washburn Athletics. Cassell is a member of CoSIDA and a member of the Publications Contest Committee.

Cassell has received 33 citations for excellence for office publications, including four best in the nation, 11 second place finishes and six best covers in the nation.

Cassell and his wife, Regina, live in Topeka with their son Jacob who was born on March 23, 2003. Regina is an instructor in the Washburn mass media department.

Brad Noller

Brad Noller has worked in the WU sports information office since arriving in Topeka in the fall of 1998. He served as the interim sports information director at Washburn when the sports information director's position was vacated soon after his arrival. He remained on staff as the student assistant until his graduation in December 1999. In the fall 2004, Noller added marketing and promotion duties to his responsibilities.

Noller has also worked as a part-time

sports reporter for the Topeka Capital-Journal. Prior to that, he worked in the Johnson County Community College's sports information office during the 1997-98 season.

In the summer of 1999, Noller was honored as one of three initial recipients of the CoSIDA undergraduate internship grant.

The Clinton, Mo., native earned a bachelor of arts degree from Washburn in mass media with a journalism emphasis. He also received a business minor in marketing. He lives in Topeka with his wife Tiffany, 'bsn 02.

Steve Ice

Steve Ice enters his 24th year as the Head Athletic Trainer at Washburn University.

Ice took over the Ichabods and Lady Blues programs in the fall of 1982 after a two-year assignment as the Associate Athletic Trainer at Lehigh University in Bethlehem, Penn.

During Ice's tenure at Washburn, the athletics training staff has seen the addition of the Petro Allied Health Center as a valuable resource for the prevention and rehabilitation of WU student-athletes.

Ice received his bachelor's degree from St. Mary of the Plains College in Dodge City, Kan., in 1977 and earned his master's from the University of Kansas in 1980. Ice also served as a graduate assistant athletic trainer for the Jayhawks from 1977 to 1979.

In addition to his duties at Washburn, Ice works in conjunction with the Tallgrass Orthopedic Group of Topeka.

Steve and his wife Janis have four children; Brian, Patrick, Jenna and Alyssa.

Ron Wessel

Ron Wessel enters his 25th year at Washburn University as the head equipment manager for the athletics department.

Wessel, a native of Sierra Vista, Ariz., is in charge of maintaining all of the athletic department's equipment needs. He attended Baker University in Baldwin

City. Wessel then accepted the equipment manager's position at Washburn in the spring of 1980.

He is a member of the American Equipment Managers Association and became certified in 1992. Wessel has served as a District Director of the AEMA since 1993. In addition, he serves on the Continuing Education Committee of the AEMA.

Ron lives in Topeka and enjoys sports, traveling, science fiction and physical fitness.

John Burns

John Burns is in his second season as a Certified Athletic Trainer after joining Washburn Athletics in August of 2003.

Burns, a native of Salina, Kan., has job responsibilities with both athletics and academics. His primary athletic training responsibilities is with the football team, and academically, he oversees and teaches athletic training students as the Clinical Education Coordinator in the Athletic Training Education Program for the HPEES department.

He is an alumnus of Washburn, receiving his bachelor's degree in 1992. Burns then earned a Master of Science degree in exercise and sports science from the University of Arizona in 1994. Prior to returning to Washburn, he was a staff athletic trainer at Freeman Hospital in Joplin, Mo and most recently, the Coordinator of Sports Medicine for Integris Baptist Regional Health Center in Miami, OK, where he also served as a consultant athletic trainer for the Northeastern Oklahoma A&M Junior College Norsemen.

John is married to Linda Oldham Burns, also a Washburn alumnus and employee in the financial aid department, and they have a son, Tyler.

Steve Ice
Head Athletic Trainer
785-231-1010 x1753



Ron Wessel
Head Equipment Manager
785-231-1010 x1761, x1338



John Burns
Assistant Athletic Trainer
785-231-1010 x1761, x2155



Larry Blumberg
Faculty Athletics Representative
785-231-1010 x1492



Sandy Foster
Athletics Secretary
785-231-1010 x1339



Gil Herrera
Athletics Facility Manager
785-231-1010 x1304



Washburn University

Main campus switchboard number: 785.231.1010

General athletics number: 785.231.1134

Athletics fax number: 785.231.1091

Washburn University Board of Regents

Jim Roth, Topeka - chairman

Nancy Paul, Topeka - vice chairman • Charles Engel, Topeka - past chairman

Margaret I. Johnson-Warren, Topeka

Lewis L. Ferguson, Topeka

Mayor James McClinton, Topeka

Karen Lee, Topeka

Blanche Parks, Topeka

Ben Blair, Topeka

University Administration

President.....	Dr. Jerry Farley.....	x1556
Vice President / Administration & Treasurer....	Wanda Hill.....	x1634
Vice President / Academic Affairs.....	Dr. Ron Wasserstein.....	x1649
Vice President / Student Life.....	Dr. Denise Ottinger.....	x1390
Vice President / Enrollment Management.....	Al Dickes.....	x1812

Washburn Athletics Phone Numbers

Director of Athletics.....	Loren Ferre'.....	x1794
Associate Director of Athletics for Development....	Kerry Dickerson.....	x1334
Assistant Director of Athletics/SWA.....	Janet Degginger.....	x1790
Assistant Director of Athletics for External Relations..	Karmen Byers.....	x1092
Sports Information Director.....	Gene Cassell.....	x1791
Faculty Athletics Representative.....	Larry Blumberg.....	x1493
Head Athletic Trainer.....	Steve Ice.....	x1753
Head Equipment Manager.....	Ron Wessel.....	x1761, x1338
Athletic Facilities Manager.....	Gil Herrera.....	x1304
Athletics Secretary.....	Sandy Foster.....	x1339
Administrative Assistant for Development.....	Jamie Weber.....	x1466

Coaching Staff

Football

Head Coach.....	Craig Schurig.....	x1340
Offensive Coordinator.....	Brian Miller.....	x1705
Defensive Coordinator.....	Chris Brown.....	x1795
Defensive Line Coach/Strength and Conditioning....	David Trupp.....	x1335
Linebackers/Special Teams Coordinator.....	Cooper Harris.....	x1798
Wide Receivers/Recruiting Coordinator.....	Rob Robinson.....	x1947

Volleyball

Head Coach.....	Chris Herron.....	x1946
-----------------	-------------------	-------

Women's Soccer

Head Coach.....	Tim Collins.....	x1756
-----------------	------------------	-------

Baseball

Head Coach.....	Steve Anson.....	x1793
-----------------	------------------	-------

Softball

Head Coach.....	Lisa Carey.....	x1797
-----------------	-----------------	-------

Men's Basketball

Head Coach.....	Bob Chipman.....	x1355
Assistant Coach.....	Ewan Auguste.....	x1881

Women's Basketball

Head Coach.....	Ron McHenry.....	x1796
Assistant Coach.....	Dustin Odum.....	x1462

Golf

Head Coach.....	Doug Hamilton.....	x1764
-----------------	--------------------	-------

Men's and Women's Tennis

Head Coach.....	Jennifer Hastert.....	x1757
-----------------	-----------------------	-------



Topeka facts:

Topeka is the capital city of Kansas and supports most of the state agencies

Topeka is the home of such national companies such as Frito-Lay, Goodyear, Payless Shoe Source, American Investors, Hill's Pet Nutrition and Josten's

Topeka has more than 200 restaurants and 30 attractions, galleries and entertainment venues and more than 3,200 hotel rooms

Heartland Park Topeka (left) has been a world-class destination since 1989 and was the first major motorsports facility to be built in North America since 1968.







Washburn has some of the best facilities in NCAA Division II Sports. (Top row from left) Lee Arena holds 3,804 people and is the home to Ichabod and Lady Blues basketball. The Washburn Softball Complex has two fields with a new press box in between allowing game management for both fields. The Southwestern Bell Student Technology Center has 16 computers where student-athletes can do their homework. (Middle row) The Lady Blues volleyball team play their matches in Lee Arena. Yager Stadium is the home of Ichabod football and underwent a major facelift with the addition of Bianchino Pavilion before the 2003 season. The McPherson Booster room allows fans and alumni to watch games in Lee Arena from a second level vantage point. (Bottom row) The Lady Blues soccer field is in its second year of existence. The Washburn tennis complex played host to both the men's and women's NCAA North Central Regional in 2004. Falley Field has been the home of Ichabod baseball since 1990.



washburn soccer complex

Construction started in May, 2003 on the Lady Blues soccer field southeast of the Washburn Softball Complex with the removing of several trees and then levelling of the ground. On July 14, 2003, workers came in to lay down the sod that would soon become the Lady Blues' soccer field. The field has portable seating for more than 300 and plenty of room for chairs and blankets on the east side of the field.

The Lady Blues won the first game played on the soccer field and their first game in school history in a 5-1 win over Ottawa University on Sept. 3, 2003. University President, Dr. Jerry Farley (right) had the ceremonial first kick to open the complex before the game.



Lady Blues Soccer Complex Season Records

Year	Record	Pct.
2003	4-5-1	.450
Totals	4-5-1	.450



Lady Blues Soccer Complex Facts

Dedicated: Sept. 3, 2003
Capacity (Bleachers): 300
Largest Crowd: 375 vs Missouri Southern, 10/12/03
Dimensions: Kentucky Bluegrass/Fescue Mix Grass
Dimensions: 120 x 80



Lady Blue firsts at home

Match: Ottawa, Sept. 3, 2003 (W 5-1)
Victory: Ottawa, Sept. 3, 2003 (W 5-1)
NCAA match: East Central, Sept. 7, 2003 (W 3-2)
MIAA match: Central Missouri, Oct. 4, 2003 (L 0-2)
Goal: Meagan Horvath vs Ottawa, Sept. 3, 2003, from Melissa Zadina at 13:38



Lady Blues Season Attendance Marks

Year	Matches	Total	Avg.	NCAA*
2003	10	2425	242.5	11th
Totals	10	2425	242.5	

*Ranking in NCAA Division II Women's Soccer Attendance



Top Crowds at the Lady Blues Soccer Complex

- 375 Missouri Southern, 10/12/03 W 3-2
- 350 Emporia State, 10/15/03 T 1-1
- 350 Ottawa, 9/3/03 W 5-1
- 275 Central Missouri, 10/4/03 L 0-2
- 250 No. 12 Truman State, 10/19/03 L 0-3



University President Dr. Jerry Farley had the ceremonial "first kick" to open the Lady Blues Soccer Complex on Sept. 3, 2003 against Ottawa. The Lady Blues won the first match in school history and the first match on the field 5-1.



Lady Blues Amanda Geist, Jolene Silovsky, head coach Tim Collins and Erica Schmidt roll out the first strip of sod that would later become the Lady Blues' soccer field on July 14, 2003.



Before the sod could be layed out, the area on the southeast corner of campus had to be leveled. This process took more than a month to complete.