

2004 Washburn Lady Blues



2004 WASHBURN LADY BLUES

Front Row: Jenna Hatlestad, Jamie Franice, Lauren Schwindt, Anna Fahey, Amanda Geist, Stephanie Bruegger, Meagan Horvath, Laura Barnaby, Megan Garlow, Brie Forman and Erica Painting.

Back Row: Assistant Coach Josh Logsdon, Deidre Gorynski, Celese Siebert, Erica Schmidt, Jenna Lawless, Jolene Silovsky, Head Coach Tim Collins, Virginia Barnes, McKinley Rainen, Emily Leeper, Amanda Broome, Jolene Lutz and assistant coach Jessica Wilhelm.

2004 WASHBURN LADY BLUES

| No. | Name (pronunciation) | Pos. | Ht. | Cl. | Hometown/High School (College) |
|-----|---------------------------------|------|-----|-----|----------------------------------------------------|
| 0 | Jenna Hatlestad (Hat-l-stad) | GK | 5-6 | SO | Olathe, Kan./Olathe South HS (Charleston Southern) |
| 1 | Erica Painting | GK | 5-5 | SO | Lee's Summit, Mo./Lee's Summit North HS |
| 2 | Jamie Francis | MF | 5-5 | SO | Topeka, Kan./Washburn Rural HS (Ottawa) |
| 4 | Laura Barnaby (Barn-a-bee) | D | 5-3 | SO | Topeka, Kan./Seaman HS |
| 5 | Emily Leeper | F | 5-5 | FR | Topeka, Kan./Topeka HS |
| 6 | Megan Garlow | MF | 5-2 | FR | Salina, Kan./Salina Central HS |
| 7 | Jolene Lutz (Lootz) | D | 5-7 | FR | Topeka, Kan./Seaman HS |
| 8 | Jenna Lawless | F | 5-7 | SO | Topeka, Kan./Washburn Rural HS |
| 9 | Stephanie Bruegger (Brew-ger) | MF | 5-3 | SO | Overland Park, Kan./Shawnee Mission West HS |
| 10 | Lauren Schwindt (Schwin-t) | MF | 5-5 | SO | McPherson, Kan./McPherson HS (Louisiana-Lafayette) |
| 11 | Celese Siebert (Sea-bert) | F | 5-4 | SO | Lawrence, Kan./Free State HS |
| 12 | Erica Schmidt | D | 5-6 | SO | McPherson, Kan./McPherson HS |
| 14 | Brie Forman (Bree) | D | 5-6 | FR | Topeka, Kan./Hayden HS |
| 15 | Amanda Broome | MF | 5-6 | SO | Topeka, Kan./Seaman HS |
| 16 | Amanda Geist (Guy-st) | MF | 5-3 | SO | Topeka, Kan./Hayden HS |
| 17 | Jolene Silovsky (Sill-off-skee) | F | 5-9 | SO | Topeka, Kan./Hayden HS (Missouri-Rolla) |
| 19 | Meagan Horvath | D | 5-5 | SO | Olathe, Kan./Olathe North HS |
| 21 | Anna Fahey (Fay-hee) | MF | 5-4 | SO | Parkville, Mo./Park Hill HS |
| 22 | McKinley Rainen (Rain-in) | MF | 5-6 | FR | Lenexa, Kan./Shawnee Mission West HS |
| 23 | Deidre Gorynski (Gor-in-skee) | MF | 5-9 | SO | Topeka, Kan./Hayden HS |
| 24 | Virginia Barnes | MF | 5-9 | JR | Topeka, Kan./Topeka HS (Mount Holyoke) |

Head Coach: Tim Collins (Ottawa '91, Second season at Washburn, 4-13-1 (.250)

Assistant Coach: Jessica Wilhelm (Manhattan Christian, '04)

Student Assistant Coach: Josh Logsdon

Alphabetical Roster

| | | | | | | | |
|----|------------------------------|----|----------------------------|----|-----------------------------|----|-----------------------------|
| 4 | Laura Barnaby D | 2 | Jamie Francis MF | 8 | Jenna Lawless F | 10 | Lauren Schwindt . . . MF |
| 24 | Virginia Barnes MF | 6 | Megan Garlow MF | 5 | Emily Leeper F | 11 | Celese Siebert F |
| 15 | Amanda Broome MF | 16 | Amanda Geist MF | 7 | Jolene Lutz D | 17 | Jolene Silovsky F |
| 9 | Stephanie Bruegger . . MF | 23 | Deidre Gorynski . . . MF | 1 | Erica Painting GK | | |
| 21 | Anna Fahey MF | 0 | Jenna Hatlestad GK | 22 | McKinley Rainen . . . MF | | |
| 14 | Brie Forman MF | 19 | Meagan Horvath D | 12 | Erica Schmidt D | | |

2004 washburn squad breakdown



Lady Blues By Class

Seniors (0): none

Juniors (1): Virginia Barnes

Sophomores (15): Erica Painting, Jamie Francis, Laura Barnaby, Jenna Lawless, Stephanie Bruegger, Lauren Schwindt, Celese Siebert, Erica Schmidt, Amanda Broome, Amanda Geist, Jolene Silovsky, Meagan Horvath, Anna Fahey, Deidre Gorynski

Freshmen (5): Brie Forman, Emily Leeper, Megan Garlow, Jolene Lutz, McKinley Rainen



Lady Blues By Height

5-2 Meagan Horvath

5-3 Laura Barnaby, Stephanie Bruegger
Amanda Geist

5-4 Celese Siebert, Anna Fahey

5-5 Erica Painting, Jamie Francis, Emily Leeper,
Lauren Schwindt, Meagan Horvath

5-6 Jenna Hatlestad, Erica Schmidt, Amanda
Broome, McKinley Rainen, Brie Forman

5-7 Jenna Lawless, Jolene Lutz

5-9 Jolene Silovsky, Deidre Gorynski, Virginia Barnes



Lady Blues By Hometown/State

Kansas (21)

(Lawrence - 1) Celese Siebert

(Lenexa - 1) McKinley Rainen

(McPherson - 2) Lauren Schwindt, Erica Schmidt

(Olathe - 2) Jenna Hatlestad, Meagan Horvath

(Overland Park - 1) Stephanie Bruegger

(Salina - 1) Megan Garlow

(Topeka - 11) Jamie Francis, Laura Barnaby, Emily Leeper,
Jolene Lutz, Jenna Lawless, Amanda Broome, Amanda Geist,
Jolene Silovsky, Deidre Gorynski, Virginia Barnes, Brie Forman

Missouri (2)

(Lee's Summit - 1) Erica Painting

(Parkville - 1) Anna Fahey



Lady Blues By Position

Defenders (6): Meagan Horvath, Laura Barnaby, Stephanie Bruegger, Erica Schmidt, Jolene Lutz, Brie Forman

Midfielders (9): Amanda Geist, Anna Fahey, Lauren Schwindt, Deidre Gorynski, McKinley Rainen, Jamie Francis, Megan Garlow, Amanda Broome, Virginia Barnes

Forwards (4): Jolene Silovsky, Jenna Lawless, Emily Leeper, Celese Siebert

Goalkeepers (2): Erica Painting, Jenna Hatlestad

2004 Washburn Lady Blues preseason two-deep

| Goalkeeper | | | |
|-----------------------------------|------------------------------------------------|-----------------------------------|----------------------------------|
| Erica Painting Jenna Hatlestad | | | |
| Defenders | | | |
| Laura Barnaby | Meagan Horvath Brie Forman | Stephanie Bruegger Jolene Lutz | Erica Schmidt |
| Midfielders | | | |
| Amanda Geist McKinley Rainen | Anna Fahey Jamie Francis Virginia Barnes | Lauren Schwindt Megan Garlow | Deidre Gorynski Amanda Broome |
| Forwards | | | |
| Jolene Silovsky Emily Leeper | | | Jenna Lawless Celese Siebert |



2004 Washburn preview

By Gene Cassell
Sports Information Director

The Washburn Lady Blues enter their second season in school history with a renewed confidence and eagerness to start the 2004 season.

Eighteen of the 23 Lady Blues on the roster have played through an entire season of collegiate soccer compared to on three of 22 players who made up the 2003 edition of the Washburn soccer team. Add to this season's roster, two NCAA Division I transfers who have experience soccer played at a higher level, the Lady Blues are ready to improve on their inaugural season record of 4-13-1.

The 2004 Washburn Lady Blues soccer team has 15 players back from last season and mostly dominate the roster as sophomores. The Lady Blues have only one upper classman and have added five freshmen to fill out the roster.

"Even though we have lost seven players off of last season's roster, we have by far improved our talent level and our depth on this year's squad," head coach Tim Collins said. "Having a full year to recruit our incoming freshmen has also helped our skill level and it was a very successful recruiting season bringing in five talented newcomers."

The Lady Blues, in addition to five new freshman, have also added the services of three transfers, two of whom come from the NCAA Division I ranks, and the other who played on a regionally ranked NAIA squad who played deep into the playoffs.

The Returners

The Lady Blues return fourteen players off of last year's squad, including two all-MIAA honorable mention selections a pair of sophomores. Forward Jenna Lawless and defender Meagan Horvath are each back after combining for 11 goals, five assists and 27 points, which accounted for 42 percent of last season's point total.

A change has been made with Horvath for the upcoming season as she is moving to defender from the midfield position she manned last year scoring five goals with four assists.

"This will be an adjustment for Meagan moving to the defense, but it is a position on the field she played in high school and her leg strength will be a boost to us in the defensive end," Collins said.

Lawless returns to one of the forward positions and she will be joined by sophomore Jolene Silovsky. All though she did not play last season on the field, the Missouri-Rolla transfer did practice with the squad and was able to play in spring matches with the team.

Also returning to the forward position is sophomore Celese Siebert. Siebert scored two goals last season.

In the midfield, the Lady Blues return three of their four starters in a trio of sophomores in Amanda Geist, Anna Fahey and Deidre Gorynski. All three scored one goal last season. Other returnees include sophomore Amanda Broome and junior Virginia Barnes.

The Lady Blues return the most experienced group in the defenders section of the field. With the addition of Horvath to the group, sophomores Laura Barnaby, Stephanie Bruegger and Erica Schmidt all return to the team.

In goal, sophomore Erica Painting returns after starting the final 13 games last season after an ankle injury forced her to miss parts of the first five games of the year.

The Newcomers

The Lady Blues will have a total of eight new faces by way of high school signees and three college transfers.

Sophomore Jenna Hatlestad is a NCAA Division I transfer from Charleston Southern where she appeared in ten games in goal, starting nine recording 40 saves in 630 minutes of action. Also joining the Lady Blues from the D-I ranks is Lauren Schwindt. The sophomore was the second leading scorer on the Ragin'-Cajuns team from Louisiana-Lafayette where she scored three goals totaling nine points.

The third transfer is sophomore Jamie Francis. The Topeka native joined the Lady Blues for spring drills from Ottawa, where the Braves finished their season in the NAIA Regional finals.

"We're looking for leadership from these three soccer players and for them to come in and contribute to our success, helping to build our program," Collins said.

They are joined by a quartet of freshman in defender Jolene Lutz, midfielders McKinley Rainen and Megan Garlow and forward Emily Leeper.

The MIAA

The Lady Blues were picked eighth in the MIAA Coaches poll, tallying 14 points. Five-time defending champion Truman State was tabbed as the team to beat as they finished with 41 points. The Bulldogs had five first place votes. The other two first place votes went to Southwest Baptist with 37 total points. The Bearcats were followed by Central Missouri in third with 33 points, Missouri-Rolla in fourth with 25 points. Northwest Missouri was picked fifth with 16 points and Emporia State and Missouri Southern were awarded 15 points, one ahead of the Lady Blues.

Washburn Profiles - returning all-miaa



Off the field

Favorite food:Pasta

Favorite book: .It's Not About the Bike
- Lance Armstrong

If I won the lottery I would: ... buy a house

Pregame superstitions: . bury gum on the field and polish my boots

I came to Washburn: ... to play soccer

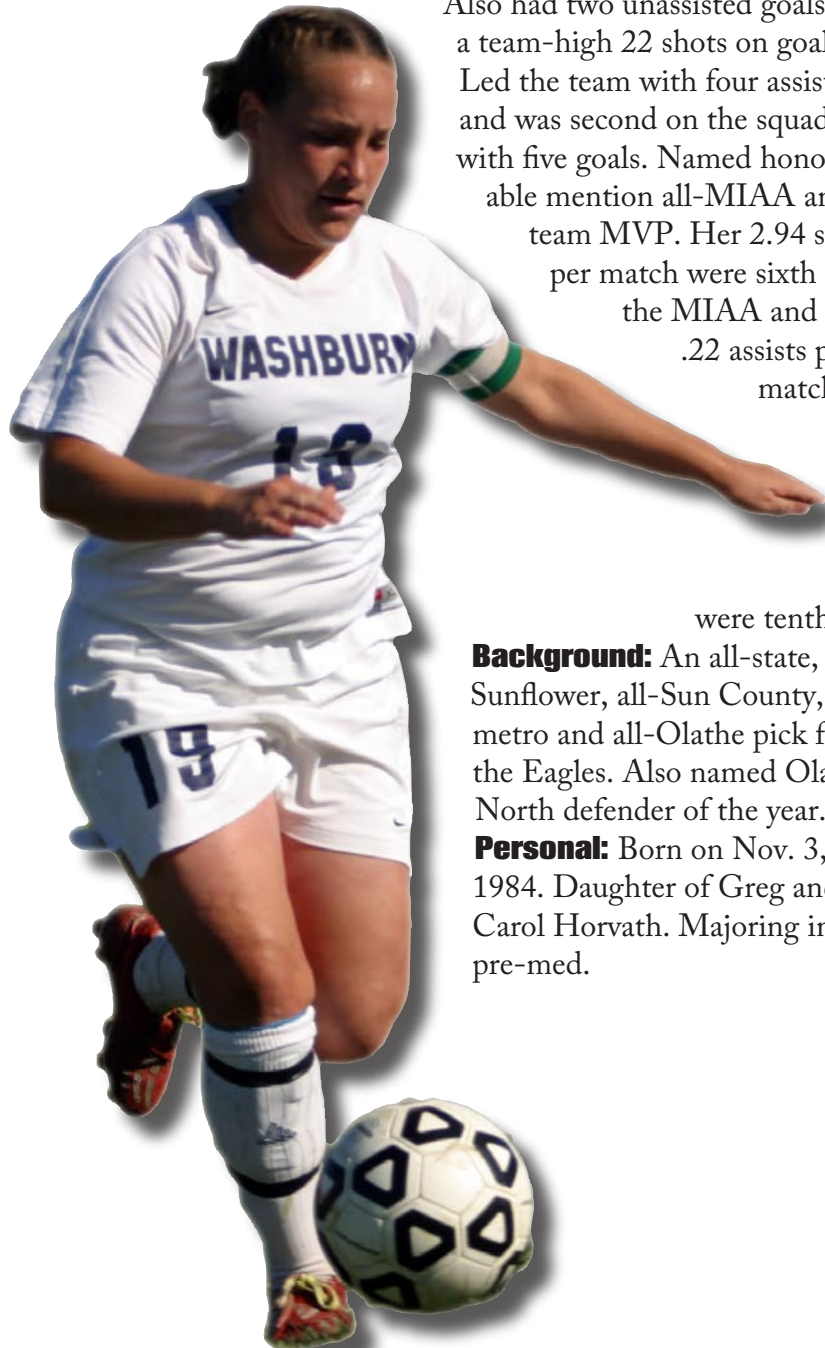
At Washburn: Returns as the leading goal scorer for the Lady Blues. Is switching from the midfield to a defender position.

As a freshman in 2003: Scored the first goal in Lady Blues history on Sept. 3 against Ottawa. Recorded at least one point in three straight matches from Oct. 12 to Oct. 18 recording six points in those matches with two goals and two assists.

Also had two unassisted goals and a team-high 22 shots on goal.

Led the team with four assists and was second on the squad with five goals. Named honorable mention all-MIAA and team MVP. Her 2.94 shots

per match were sixth in the MIAA and .22 assists per match



were tenth.

Background: An all-state, all-Sunflower, all-Sun County, all-metro and all-Olathe pick for the Eagles. Also named Olathe North defender of the year.

Personal: Born on Nov. 3, 1984. Daughter of Greg and Carol Horvath. Majoring in pre-med.

Horvath Career Stats

| YEAR | MP/MS | G | A | Pts | Shots | Shot% | SOG | SOG % | GWG |
|---------------|--------------|----------|----------|-----------|-----------|-------------|-----------|-------------|----------|
| 2003 | 18/18 | 5 | 4 | 14 | 53 | .094 | 22 | .415 | 0 |
| Totals | 18/18 | 5 | 4 | 14 | 53 | .094 | 22 | .415 | 0 |



8 JENNA LAWLESS

5-7, So., Forward
Topeka, Kan.
Washburn Rural High School



Off the field

Favorite food: Chicken and Salsa

Favorite TV shows: ER, CSI and
Crossing Jordan

Favorite movies: . How to lose a guy in
10 days and Grease

Favorite music group: . Kenny Chesney
and Rascal Flatts

Favorite cartoon character: . . . Mickey
Mouse

If I owned 1 CD: A county mix CD

**Would star as me in the movie of my
life:** Drew Barrymore

Favorite "other" sport: Volleyball

After a game I . . . : relax

**If I could live anywhere else it would
be in:** Chicago

Favorite sports announcer: . Dick Vitale



At Washburn: Is the leading returning goal scorer after earning all-MIAA honorable mention honors last season.

As a freshman in 2003: Scored six goals with one assist including the match-winning goal in the 5-1 win over Ottawa. Scored two goals against Northwest Missouri on Oct. 8 in a 4-1 win. Named honorable mention all-MIAA. Her 0.81 points per match were tenth in the MIAA, as well as her 0.38 goals per match. She led the Lady Blues with three unassisted goals.

Background: Was a first team all-state pick as a junior and senior and second team as a sophomore. Received all-region and all-conference honors her sophomore, junior and senior seasons and was also named all-city as a junior and senior. She was also an all-state pick in volleyball and all-conference in basketball. A National Honor Society member and a U.S. Army's National Scholar Athlete.

Personal:

Born on Nov. 1, 1984.

Daughter of Patrick and Eileen Lawless. Majoring in physical therapy.



Lawless Career Stats

| YEAR | MP/MS | G | A | Pts | Shots | Shot% | SOG | SOG % | GWG |
|---------------|--------------|----------|----------|-----------|-----------|-------------|-----------|-------------|----------|
| 2003 | 16/15 | 6 | 1 | 13 | 30 | .200 | 13 | .433 | 1 |
| Totals | 16/15 | 6 | 1 | 13 | 30 | .200 | 13 | .433 | 1 |



Off the field

Favorite food: . . . Maccaroni and cheese

Favorite book: The Leadership Moment

Favorite TV show: Spongebob Squarepants

Favorite movie: Shrek II

Would star as me in the movie of my life: Molly Shannon

Favorite "other" sport: . Cross Country

After a game I . . .: Eat

If I could live anywhere else it would be in: . a house with Hatlestad and Horvath

Favorite professional team: . Any team with Freddy Adu

ESPN Sportscenter Fantasy: . Being in a commercial with Freddy Adu

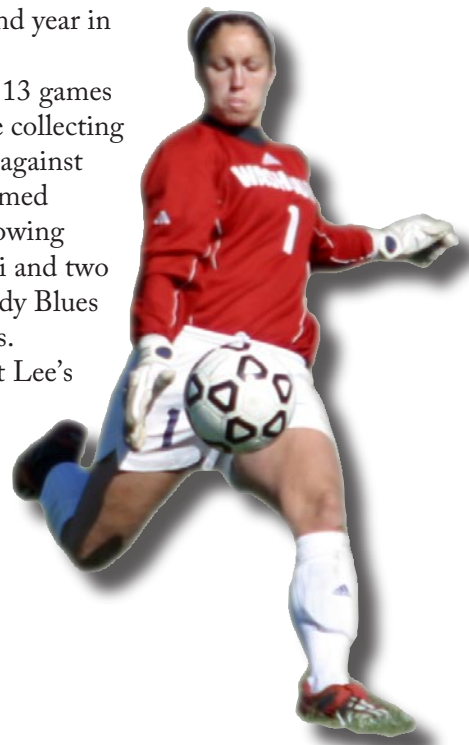
Pregame superstition: wearing Horvath's shirt

At Washburn: Returns for her second year in goal for the Lady Blues.

As a freshman in 2003: Played in 13 games recording a 2.90 goal against average collecting 79 saves, including a career-high 11 against No. 1 ranked Nebraska-Omaha. Named MIAA Goalie of the Week after allowing one goal against Northwest Missouri and two against Missouri Southern as the Lady Blues picked up their first two MIAA wins.

Background: A two-sport athlete at Lee's Summit North High School for the Broncos.

Personal: Born on May 5, 1985. Daughter of Mike and Phyllis Painting. Undecided on major.



Painting Career Stats

| Year | MP/MS | Min | Shots | Svs | GA | GAA | SV% | SO | Rec |
|---------------|--------------|----------------|------------|-----------|-----------|-------------|-------------|------------|---------------|
| 2003 | 13/13 | 1119:04 | 206 | 79 | 36 | 2.90 | .687 | 0.0 | 2-10-1 |
| Totals | 13/13 | 1119:04 | 206 | 79 | 36 | 2.90 | .687 | 0.0 | 2-10-1 |



Off the field

Favorite food: Pasta

Favorite book: A Child Called It

Favorite TV show: Friends

Favorite movie: Radio

Favorite music group: . Dave Matthews

If I owned 1 CD: Dave Matthew-Live in Central in Park

Would star as me in the movie of my life: Julia Roberts

Favorite "other" sport: Softball

After a game I . . .: rest

If I could live anywhere else it would be in: Paris

Pregame superstition: . . . electric tape

If I won the lottery I would: buy a house

At Washburn: Joined the Lady Blues in the spring.

Background: Transfer from Ottawa where she earned Honorable Mention All-KCAC accolades as she finished the season with 16 goals and three assists. finished third in the conference scoring 16 goals in 21 games for a 0.76 per game average. She also finished fifth in the KCAC with 1.67 points per game adding three assists on the season. She played prep career at Washburn

Rural

Personal: Born on June 25, 1985.

Daughter of Terry and Trudy Francis. Majoring in nursing.





Off the field

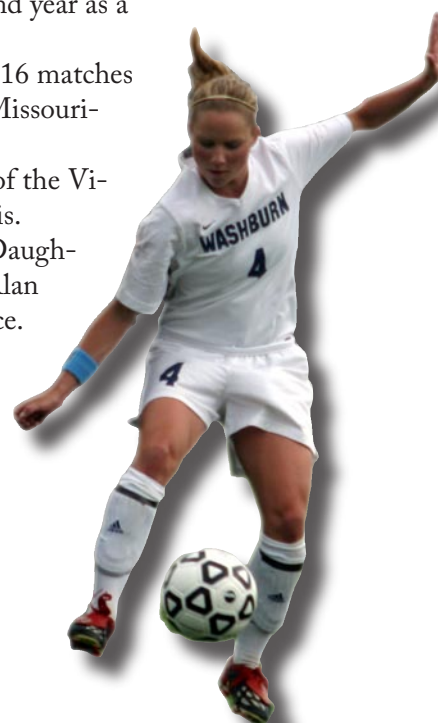
Favorite food: Lasagna
Favorite book: Code to Zero
Favorite TV show: Fairly Odd Parents
Favorite movie: Gangs of New York
Favorite music group: Tonic
If I owned 1 CD: 3 Doors Down
Would star as me in the movie of my life: Ashley Judd
Favorite "other" sport: Tennis
After a game I . . .: Eat
If I could live anywhere else it would be in: Denver, Colo.
Favorite cartoon character: Courage the Cowardly Dog
Pregame superstition: wearing my lucky sweat band
If I won the lottery I would: Buy a big house

At Washburn: Returns for her second year as a defender for the Lady Blues.

As a freshman in 2003: Played in 16 matches starting 11 taking one shot against Missouri-Rolla on Sept. 5.

Background: A four-year member of the Vikings' soccer team. Also played tennis.

Personal: Born on May 29, 1985. Daughter of Madonna Mergenmeier and Alan Barnaby. Majoring in political science.



Barnaby Career Stats

| YEAR | MP/MS | G | A | Pts | Shots | Shot% | SOG | SOG % | GWG |
|---------------|--------------|----------|----------|----------|----------|-------------|----------|-------------|----------|
| 2003 | 16/11 | 0 | 0 | 0 | 1 | .000 | 0 | .000 | 0 |
| Totals | 16/11 | 0 | 0 | 0 | 1 | .000 | 0 | .000 | 0 |



Off the field

Favorite food: Steak, broccoli, ice cream
Favorite book: Jemima J
Favorite TV show: Regis & Kelly and Sex in the City
Favorite music group: Dave Matthews Band
If I owned 1 CD: All Dave Matthew Band CDs
Favorite "other" sport: basketball
After a game I . . .: eat
If I could live anywhere else it would be in: Australia
Favorite cartoon character: Scooby Doo
Pregame superstition: think positive
If I won the lottery I would: an island
Person in history to meet: my grandma

At Washburn: Returns for her second year as a midfielder for the Lady Blues.

As a freshman in 2003: Played in all 18 matches starting 16. Her lone goal was match-winner against Northwest Missouri on Oct. 8 in a 4-1 win. She also had two assists in the season-opener against Ottawa.

Background: A first team all-Sunflower League pick and honorable mention all-metro selection. A Viking scholar athlete pick as well and a member of the honor roll.

Personal:

Born on May 14, 1985. Daughter of Steve and Lee Bruegger. Majoring in education.



bruegger Career Stats

| YEAR | MP/MS | G | A | Pts | Shots | Shot% | SOG | SOG % | GWG |
|---------------|--------------|----------|----------|----------|----------|-------------|----------|-------------|----------|
| 2003 | 18/16 | 1 | 2 | 4 | 3 | .333 | 2 | .667 | 1 |
| Totals | 16/11 | 0 | 0 | 0 | 1 | .000 | 0 | .000 | 0 |



Off the field

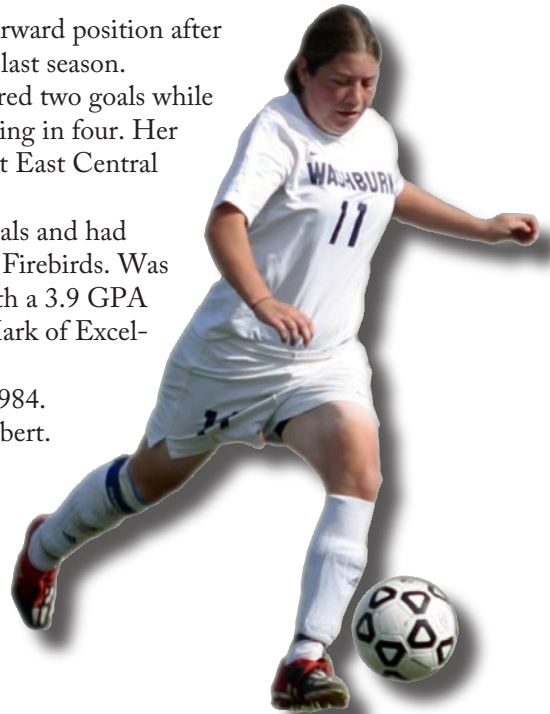
Favorite food: . . . Pasta with white sauce
Favorite TV shows: Pimp my ride
Favorite movies: . . . Love and Basketball
Favorite music group: G-Unit
If I owned 1 CD: a mix CD
Would star as me in the movie of my life: Michelle Akers
Favorite "other" sport: Basketball
After a game I . . .: lay around
If I could live anywhere else it would be in: where it's 70° all the time
Pregame superstition: . . . wear a sock on my right leg that my coach gave me when he moved to Alaska
If I won the lottery I would: payoff my parent's mortgage
Person in history to meet: 2Pac

At Washburn: Returns to a forward position after starting the final four matches last season.

As a freshman in 2003: Scored two goals while playing in all 18 matches, starting in four. Her goal in the 78th minute against East Central was the match-winner.

Background: Scored seven goals and had three assists as a senior for the Firebirds. Was a member of the honor roll with a 3.9 GPA and received the President's Mark of Excellence Award.

Personal: Born on Dec. 17, 1984.
 Daughter of Jim and Mary Siebert.
 Undecided on major.



Siebert Career Stats

| YEAR | MP/MS | G | A | Pts | Shots | Shot% | SOG | SOG % | GWG |
|---------------|-------------|----------|----------|----------|-----------|-------------|----------|-------------|----------|
| 2003 | 18/4 | 2 | 0 | 4 | 16 | .125 | 8 | .500 | 1 |
| Totals | 18/4 | 2 | 0 | 4 | 16 | .125 | 8 | .500 | 1 |



Off the field

Favorite food: Zucchini bread
Favorite TV show: . . . Law & Order, CSI
Favorite movie: I Am Sam
Favorite music group: Lone Star
If I owned 1 CD: Norah Jones
Favorite "other" sport: Volleyball
After a game I . . .: shower
If I could live anywhere else it would be in: Europe
Favorite cartoon character: . . . Charlie Brown
If I won the lottery I would: . A house and things to go in it
Advice to youngsters: Don't take education for granted
I came to Washburn because: . . Good academics and to play soccer

At Washburn: Returns for her second year as a defender for the Lady Blues.

As a freshman in 2003: Started all 18 matches for the Lady Blues in th defense recording four shots and one shot on goal.

Background: A first team all-conference pick and second team all-region pick as well as honorable mention all-state honors for the Bullpups.

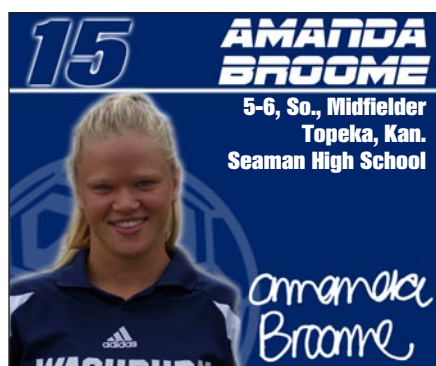
Personal: Born on Sept. 9, 1983.
 Daughter of Lowell and Jean Schmidt.
 Majoring in elementary education.



Schmidt Career Stats

| YEAR | MP/MS | G | A | Pts | Shots | Shot% | SOG | SOG % | GWG |
|---------------|--------------|----------|----------|----------|----------|-------------|----------|-------------|----------|
| 2003 | 18/18 | 0 | 0 | 0 | 4 | .000 | 1 | .250 | 0 |
| Totals | 18/18 | 0 | 0 | 0 | 4 | .000 | 1 | .250 | 0 |





Off the field

Favorite food: Lasagna
Favorite book: Harry Potter series
Favorite TV show: Lizzie McGuire
Favorite movie: Fight Club
Favorite music group: Michael Jackson
If I owned 1 CD: Michael Jackson's Greatest Hits

Would star as me in the movie of my life: Julia Stiles
Favorite "other" sport: Volleyball
After a game I . . . : . . . talk to my parents
If I could live anywhere else it would be in: North Carolina
Favorite cartoon character: Winnie the Pooh

Pregame superstition: Putting "pre-wrap" in my hair and arm sweat band



At Washburn: Returns for her second year as a midfielder for the Lady Blues.

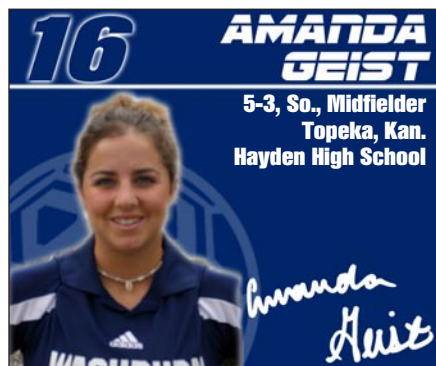
As a freshman in 2003: Playing in all 18 games starting one. Had two shots, both against Missouri Southern on Oct. 12.

Background: A member of Who's Who in sports playing her prep career at Seaman High School.

Personal: Born on Aug. 8, 1984. Daughter of Brad and Jeanette Broome. Undecided on major.

broome Career Stats

| YEAR | MP/MS | G | A | Pts | Shots | Shot% | SOG | SOG % | GWG |
|---------------|-------------|----------|----------|----------|----------|-------------|----------|-------------|----------|
| 2003 | 18/1 | 0 | 0 | 0 | 2 | .000 | 0 | .000 | 0 |
| Totals | 18/1 | 0 | 0 | 0 | 2 | .000 | 0 | .000 | 0 |



Off the field

Favorite food: Potatoes and noodles
Favorite TV show: ER
Favorite movie: Footloose
Favorite book: . . . Oh the Places You Can Go - Dr. Seuss
Favorite music group: Dispatch
If I owned 1 CD: Kenny Chesney
Would star as me in the movie of my life: Julia Roberts
Favorite "other" sport: Football
If I could live anywhere else it would be in: Texas

Pregame superstition: Left cleat on first
If I won the lottery I would: .house on the lake

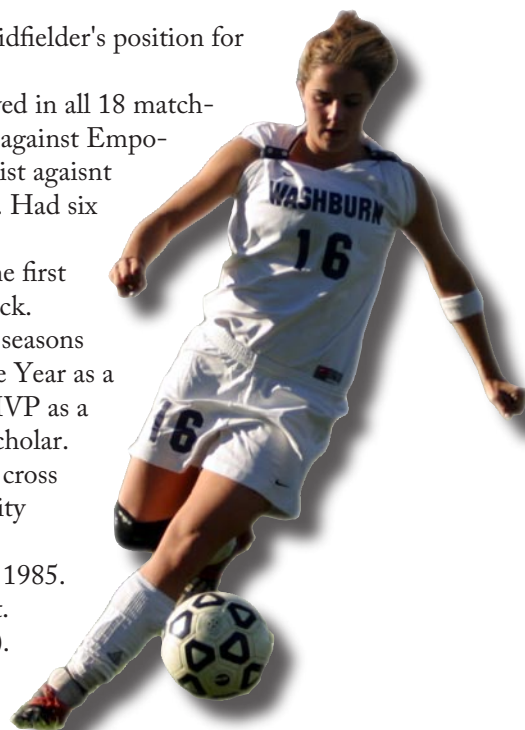
Person in history to meet: Ray Nitschke

At Washburn: Returns to a midfielder's position for the second year.

As a freshman in 2003: Played in all 18 matches starting 17 scoring one goal against Emporia state on Sept. 17 and an assist against Northwest Missouri on Oct. 8. Had six shots on goal.

Background: Was a three-time first team all-state and all-region pick. Was also all-city selection two seasons and was Wildcats' Player of the Year as a junior and team captain and MVP as a senior. A USA All-America Scholar. Also played basketball and ran cross country where she was an all-city selection.

Personal: Born on March 17, 1985. Son of Mike and Debbie Geist. Majoring in nursing (pre-med). Her father Mike wrestled at Oklahoma.



Geist Career Stats

| YEAR | MP/MS | G | A | Pts | Shots | Shot% | SOG | SOG % | GWG |
|---------------|--------------|----------|----------|----------|----------|-------------|----------|-------------|----------|
| 2003 | 18/17 | 1 | 1 | 3 | 7 | .143 | 6 | .857 | 0 |
| Totals | 18/17 | 1 | 1 | 3 | 7 | .143 | 6 | .857 | 0 |



Off the field

Favorite food: Ice Cream

Favorite TV show: Trading Spaces

Favorite book: Harry Potter

If I owned 1 CD: Mix CD

After a game I...: eat and rest

If I could live anywhere else it would be in: Hawaii

Would star as me in the movie of my life: Reese Witherspoon

If I won the lottery I would: ... A house, boat and car

Advice to youngsters: Always be yourself

Pregame superstitions: ... A "trigger" saying I have everytime I step on the field

I came to Washburn because: ... It's a great school and to play soccer

At Washburn: Returns to action after sitting out last season after transferring.

As a redshirt in 2003: Sat out the season because of MIAA transfer rules.

Background: She started 13 games and played in 15 taking nine shots, three on goal playing one season at UMR.

At Hayden High School, she was an all-state, all-region, all-conference and all-city selection following her junior and senior seasons and was named 2002 Hayden MVP after sharing honor as a junior. Scored 27 goals as a senior finishing as Wildcats all-time leading scorer with 52 career goals and all-time assist leader as well.

Personal: Born on March 17, 1984. Daughter of Paul and Roxanne Silovsky. Her father played football and her mom played softball at Washburn. Sister Kalee plays basketball at Southern Mississippi.



Silovsky Career Stats - from Missouri-Rolla

| YEAR | MP/MS | G | A | Pts | Shots | Shot% | SOG | SOG % | GWG |
|---------------|--------------|----------|----------|----------|----------|-------------|----------|-------------|----------|
| 2002 | 15/16 | 0 | 0 | 0 | 9 | .000 | 3 | .333 | 0 |
| Totals | 15/16 | 0 | 0 | 0 | 9 | .000 | 3 | .333 | 0 |



Off the field

Favorite food: Ice Cream

Favorite TV show: Will and Grace

Favorite movie: Dirty Dancing

Favorite book: Seduction in Death

Favorite music group: ... Rascal Flatts

If I owned 1 CD: Salt 'N' Peppa

Would star as me in the movie of my life: Kate Hudson

Favorite "other" sport: Basketball

If I won the lottery I would: ... Go on a shopping spree for new clothes

Favorite cartoon character: ... Scooby Doo

After a game I: thank my friends for coming

Advice to youngsters: ... Hard work will payoff in the end

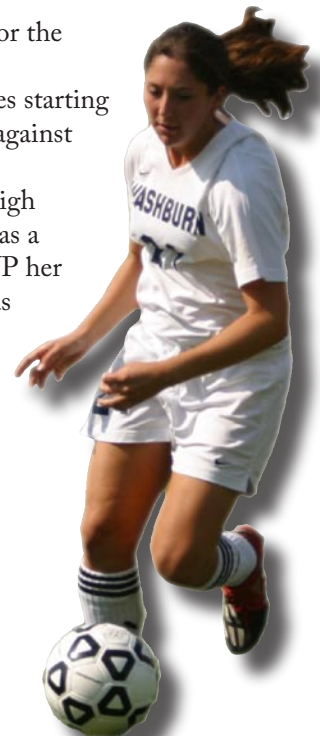
Favorite professional team: ... KC Wizards

At Washburn: Returns to a midfielder position for the second year.

As a freshman in 2003: Played in all 18 matches starting eight. Scored her lone goal in the season-opener against Ottawa on Sept. 3.

Background: A five-sport athlete at Park Hill High where she was a second team all-conference pick as a junior and senior seasons. Was also the team MVP her junior season. Graduated with a 4.0 GPA and was named class Valedictorian and a member of the National Honor Society. Also played volleyball, basketball, tennis and cross country.

Personal: Born on Sept. 14, 1984. Daughter of Thomas and Nancy Fahey. Majoring in biology.



Fahey Career Stats

| YEAR | MP/MS | G | A | Pts | Shots | Shot% | SOG | SOG % | GWG |
|---------------|-------------|----------|----------|----------|----------|-------------|----------|-------------|----------|
| 2003 | 18/8 | 1 | 0 | 2 | 8 | .125 | 2 | .250 | 0 |
| Totals | 18/8 | 1 | 0 | 2 | 8 | .125 | 2 | .250 | 0 |





Off the field

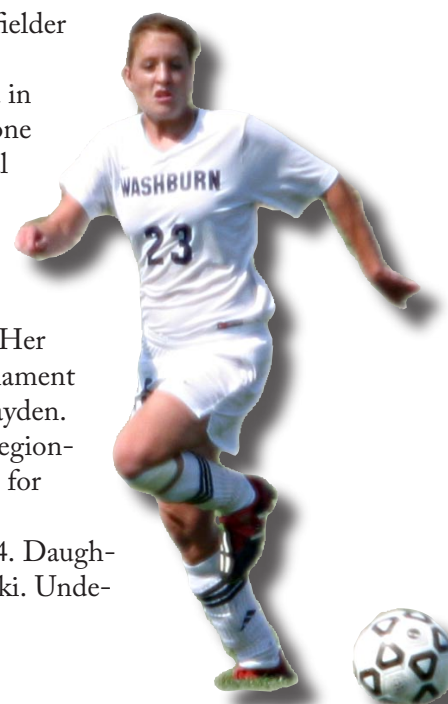
Favorite food: xxx
Favorite book: xxx
Favorite TV show: xxx
Favorite movie: xxx
Favorite music group: xxx
If I owned 1 CD: xxx
Would star as me in the movie of my life: xxx
Favorite "other" sport: xxx
After a game I . . . : xxx
If I could live anywhere else it would be in: xxx
Favorite sports announcer: xxx
Favorite cartoon character: xxx
Top sports moment: xxx
Pregame superstition: xxx
If I won the lottery I would: xxx

At Washburn: Returns to a midfielder position for the second year.

As a freshman in 2003: Played in 14 matches starting one scoring one goal on three shots. Her lone goal was against Northwest Missouri on Sept. 10 in a 3-1 loss.

Background: A four-year member of the Wildcat soccer team and two-time state finalist. Her club team won the national tournament before her freshman season at Hayden. Finished third in doubles at the regional tournament and team qualified for state tennis tournament.

Personal: Born on Oct. 24, 1984. Daughter of Edward and Grace Gorynski. Undecided on major.



GORYNSKI Career Stats

| YEAR | MP/MS | G | A | Pts | Shots | Shot% | SOG | SOG % | GWG |
|---------------|--------------|----------|----------|----------|----------|-------------|----------|-------------|----------|
| 2002 | 15/16 | 0 | 0 | 0 | 9 | .000 | 3 | .333 | 0 |
| Totals | 15/16 | 0 | 0 | 0 | 9 | .000 | 3 | .333 | 0 |



Off the field

Favorite food: Potatoes
Favorite book: . . . The Mists of Avalon
Favorite TV show: CSI
Favorite movie: Shawshank Redemption
Favorite music group: Sublime
If I owned 1 CD: . . . 40 oz. of Freedom
Would star as me in the movie of my life: Claire Danes
Favorite "other" sport: Football
After a game I . . . : . . . Eat and veg-out
If I could live anywhere else it would be in: Italy
Favorite sports announcer: Max Falkenstein
Top sports moment: . . Scoring winning goal in regionals
ESPN Fantasy: To interview Michelle Akers

At Washburn: Returning to the midfield for Washburn.

As a freshman in 2003: Played in six matches starting one. Had on assists against Northwest Missouri on Oct. 8 in a 4-1 win.

Background: A transfer from Mount Holyoke College in Massachusetts where she played one season. For the Topeka High Trojans, she was an all-region selection as a senior and a member of the National Honor Society.

Personal: Born on Sept. 14, 1981. Daughter of Craig and Robin Sweeney. Majoring in biology (pre-med).



Barnes Career Stats

| YEAR | MP/MS | G | A | Pts | Shots | Shot% | SOG | SOG % | GWG |
|---------------|------------|----------|----------|----------|----------|-------------|----------|-------------|----------|
| 2003 | 6/1 | 0 | 1 | 1 | 3 | .000 | 1 | .333 | 0 |
| Totals | 6/1 | 0 | 1 | 1 | 3 | .000 | 1 | .333 | 0 |



Background: A transfer from NCAA Division I Charleston Southern, she appeared in 10 games starting nine recording 40 saves in 630 minutes of action. At Olathe South she set school record for shutouts and goals allowed average (.442 goals per match). She was a first team all-city and all-league, and second team all-state pick. Her team went 19-1 her senior season, winning league, regional and state championships, and was rated No. 4 nationally. She also played basketball for three years and was a three-time honor roll member.

Personal: Born on May 5, 1985. Daughter of Steve and Deb Hatlestad. Majoring in athletic training.

Off the field

Favorite food: Ice Cream
Favorite book: Boy's Life
Favorite TV show: Scrubs
Favorite movie: Pirates of the Caribbean
Favorite music group: Rascal Flatts
If I owned 1 CD: . . My worship CD

Favorite "other" sport: . Basketball
After a game I . . .: Shower
If I could live anywhere else it would be in: On the water
Favorite sports announcer: . Dick Vitale
Favorite pro team: KC Chiefs



Background: At Topeka High School she was a first team all-state, all-region, all-conference and all-city selection as a junior.

Personal: Born on Sept. 6, 1985. Daughter of Richard and Janie Leeper. Majoring in business.

Off the field

Favorite food: tomato soup and grilled cheese
Favorite TV show: . . Forensic Files
Favorite movie: There's Something About Mary
If I owned 1 CD: . . Dark Side of the Moon

Favorite music group: . Pink Floyd
After a game I . . .: Relax
If I could live anywhere else it would be in: Europe
If I won the lottery: . I would buy a new car
Favorite cartoon character: .Stewy



Background: A two-time first team all-state selection and a second team all-state pick. She has received all conference honors three times as well as being named all-region three times and the Mustangs three-time captain. Played for the United States Soccer Academy under-18 team in the summer of 2003 that played overseas.

Personal: Born on Sept. 13, 1985. Daughter of Bill and Laurie Garlow. Majoring in elementary education.

Off the field

Favorite food: . .Chicken Caesar salad
Favorite book: . Purpose Driven Life
Favorite TV show:Friends
Favorite movie: Billy Madison
Favorite music group:Dave Matthews Band
If I owned 1 CD: A mix CD

Favorite "other" sport: Snowboarding
If I could live anywhere else it would be in: Europe
Person in history I would like to meet: Jesus
Favorite pro team: . . . U.S. Women's National Soccer team



Background: Was a member of the Vikings regional champs and state qualifying teams. She was an honorable mention all-city pick in basketball as a junior and honorable mention all-city and all-conference as a senior. A four-year soccer letterman. Named All-American High School Christian Athlete.

Personal: Born on Dec. 9, 1985. Daughter of Greg and Kathy Lutz. Majoring in physical education. Her mother Kathy played basketball four years for the Lady Blues.

Off the field

Favorite food: Pasta
Favorite book: To Kill a Mockingbird
Favorite TV show: ER
Favorite movie: Remember the Titans
If I owned 1 CD: Mercy Me - Almost There
Favorite "other" sport: . . Basketball

If I could live anywhere else it would be in:Tennessee
Person in history I would like to meet:President Kennedy
Would play me in the movie of my life: Julia Roberts



Washburn newcomers



Background: A transfer from NCAA Division I Louisiana-Lafayette where she finished second on the Ragin'-Cajuns with nine points and three goals. Named to the Louisiana State all-tournament team in her first two matches of her college career. At McPherson High School she was a four-time first team all-State, all-region and all-conference picks. She ended her career with 100 goals; had five goals in a game once and scored 28 goals as a as a sophomore.

Personal: Born on June 3, 1984. Daughter of Tim and Gail Schwindt. Majoring in elementary education.

Off the field

Favorite food: . . Anything Mexican
Favorite book: Harry Potter
Favorite TV show: . . One Tree Hill
Favorite movie: Love and Basketball
Favorite music group: Evanescence
If I owned 1 CD: Cher's greatest hits
Favorite "other" sport: . Basketball

Advice to youngsters: . Be yourself
If I could live anywhere else it would be in: Australia
Favorite sports announcer: . Dick Vitale
Favorite cartoon character: .Stitch
Favorite pro team: .Manchester United



Background: Was the Vikings' captain as a junior and a senior. She is also a member of the National Honor Society, student council, a member of the cross country team and a academic letterwinner. At the senior awards night, she was also awarded the Outstanding Journalism Student, Shawnee Mission West Academic Excellence Award, President's Academic Excellence certificate and the femail recipient of Shawnee Mission West' Kansas State High School Athletic Association Citizenship Award.

Personal: Born on July 1, 1986. Daughter of Mitch and Mimi Rainen. Majoring in mass media.

Off the field

Favorite food: . . Panzon's cheese dip
Favorite book: . Pride and Prejudice
Favorite TV show: . That 70's Show
Favorite movie: Pirates of the Caribbean
Favorite music group: Mac
If I owned 1 CD: .The Beatles "One"

Favorite "other" sport: . . . Tennis
After a game I . . .: Eat
If I could live anywhere else it would be in: London
Favorite sports announcer: . Dick Vitale
Favorite pro team: . . . D.C. United



Background: Was a four-year member of the Hayden Wildcats playing both midfielder and forward.

Personal: Born on March 15, 1986. Daughter of Ed and Charlene Forman. Majoring in nursing.

Off the field

Favorite food: Mexican
Favorite TV show: . . The Simpsons
Favorite movie: Old School
Favorite music group: . Any country
If I owned 1 CD: Tim McGraw
Favorite "other" sport: . . . Baseball
After a game I . . .: Eat

If I could live anywhere else it would be in: California
Favorite cartoon character: . Daffy Duck
Would play me in the movie of my life: Julia Roberts
Favorite pro team: . Manchester United



Sophomore defender Erica Schmidt was one of three Lady Blues to start all 18 matches in 2003.