

**Gleisberg**



**Clouse**



**Schmidt**



**Fletcher**



**Sells**



**Woodson**



**Stewart**



**Billington**



**Pierce**



**Huske**



**Whitt**



**Carey**



**Fluker**



**Mohler**



**Webb**

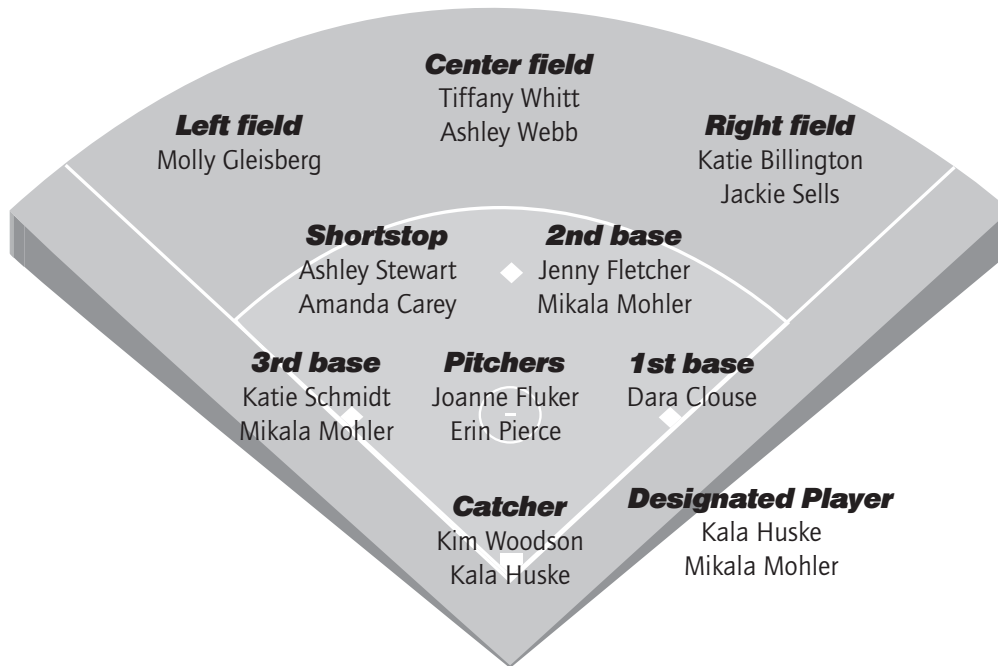


No.	Name	Pos	B/T	HT	CL	Hometown/Previous School
4	Molly Gleisberg***	OF	B/R	5-6	SR	Olathe, Kan./Olathe East HS
6	Joanne Fluker	P	R/R	5-9	FR	Valley Center, Kan./Valley Center HS
7	Jackie Sells**	UT	R/R	5-3	JR	Lee's Summit, Mo./Lee's Summit HS
8	Jennifer Fletcher***	2B	R/R	5-3	SR	DeSoto, Kan./DeSoto HS
9	Ashley Stewart *	SS	R/R	5-7	SO	Anaheim, Calif./Canyon HS
10	Katie Billington*	OF	B/R	5-4	SO	Maryland Heights, Mo./Pattonville HS
11	Dara Clouse***	1B	L/L	5-6	SR	Silver Lake, Kan./Barton County CC
12	Ashley Webb	OF	R/R	5-11	FR	Prairie Villiage, Kan./Bishop Miega HS
14	Tiffany Whitt*	OF	R/R	5-7	SO	Overland Park, Kan./Blue Valley Northwest HS
16	Kala Huske*	UT	R/R	5-5	SO	Overland Park, Kan./Shawnee Mission West HS
18	Katie Schmidt***	3B/SS	R/R	5-5	SR	Topeka, Kan./Seaman HS
19	Kim Woodson	C	R/R	5-7	JR	Overland Park, Kan./Johnson County CC
22	Erin Pierce	P	R/R	5-8	SO	Topeka, Kan./Pittsburg State
23	Amanda Carey	SS	R/R	5-8	FR	Topeka, Kan./Washburn Rural HS
25	Mikala Mohler	3B/2B	R/R	5-4	FR	Harveyville, Kan./Mission Valley HS

\*=letters earned

**Head Coach:** Lisa Carey (Oklahoma - 2002) Second season

**Assistant Coach:** D.J. Carey



## Alphabetical Roster

4	Molly Gleisberg . . . OF
6	Joanne Fluker . . . . . P
7	Jackie Sells . . . . . OF
8	Jennifer Fletcher . . 2B
9	Ashley Stewart . . . . SS
10	Katie Billington . . OF
11	Dara Clouse . . . . . 1B
12	Ashley Webb . . . . OF
14	Tiffany Whitt . . . . OF
16	Kala Huske . . . . . UT
18	Katie Schmidt . . . . 3B
19	Kim Woodson . . . . . C
22	Erin Pierce . . . . . P
23	Amanda Carey . . . . SS
25	Mikala Mohler . . . . UT

## Coaching Facts

Head Coach:  
Lisa Carey  
(Oklahoma, 2002)  
Wasburn Coaching Record  
34-14 (.708)  
Career Coaching Record  
Same  
2nd season

---

Assistant Coaches:  
D.J. Carey

## By Height

5-3	Jackie Sells
5-4	Jennifer Fletcher Katie Billington Mikala Mohler
5-5	Kala Huske Katie Schmidt
5-6	Molly Gleisberg Dara Clouse
5-7	Ashley Stewart Tiffany Whitt Kim Woodson
5-8	Erin Pierce Amanda Carey
5-9	Joanne Fluker
5-11	Ashley Webb

## By Class

<b>Seniors (4)</b>	Molly Gleisberg Jennifer Fletcher Dara Clouse Katie Schmidt
<b>Juniors (2)</b>	Jackie Sells Kim Woodson
<b>Sophomores (5)</b>	Ashley Stewart Katie Billington Erin Pierce Kala Huske Tiffany Whitt
<b>Freshman (4)</b>	Joanne Fluker Amanda Carey Mikala Mohler Ashley Webb

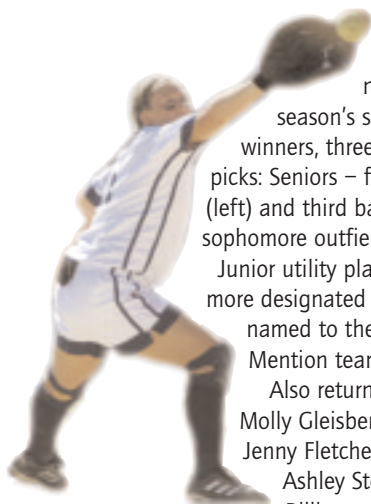
## Pronunciation Guide

Molly Gleisberg . . . Gleesberg  
Dara Clouse . . . . . Dare-a  
Kala Huske . . . . . K-la  
Joanne Fluker . . . . . Flew-ker  
Mikala Mohler . . . . . Ma-K-la

## 2004 SEASON PREVIEW

The 2004 Washburn Lady Blues are looking to settle a score. After finishing the 2003 season with a 34-14 record and a conference mark of 13-5 and a second place finish, the Lady Blues went 1-2 on the first day of the MIAA Championship Tournament and were eliminated, not qualifying for the NCAA North Central Regional Tournament - finishing seventh in the final regional poll.

"We were disappointed with the way we finished the season," second-year head coach Lisa Carey said. "We had opportunities in the MIAA Tournament and we just didn't get it done."



### Squad Notes

The Lady Blues return nine letterwinners from last season's squad. Of those nine letterwinners, three were first team all-MIAA picks: Seniors - first baseman Dara Clouse (left) and third baseman Katie Schmidt and sophomore outfielder Tiffany Whitt.

Junior utility player Jackie Sells and sophomore designated player Kala Huske were named to the all-MIAA Honorable Mention team.

Also returning are seniors, outfielder Molly Gleisberg and second baseman Jenny Fletcher, sophomores, shortstop Ashley Stewart and outfielder Katie Billington.

"We have a solid nucleus to build on from last season," Carey said. "We have four seniors who we are going to look toward for leadership over this long season."

### Pitchers

The Lady Blues will be without a returning pitcher from last season's squad. The 2004 pitching staff will feature two new faces, one of which joined the team last spring, but sat out because of MIAA transfer rules.

Sophomore Erin Pierce joined the Lady Blues in the spring of 2003 after transferring from Pittsburg State. The Topeka native was a four-time all-city and all-conference selection and recorded a Topeka-record of 496 strikeouts.

Freshman Joanne Fluker saw all the action this fall as the only eligible pitcher on staff. She was 9-0 as a senior and did not allow any runs.

### Infield

In the field, the Lady Blues return three starters. Senior first baseman Dara Clouse is the team's second-leading returning hitter with a .300 mark from last season. She started all 48 games driving in a 28 runs gaining first team all-MIAA honors.

Senior Katie Schmidt (right) missed the fall season after suffering a broken leg but looks to hold down the hot corner on the infield. Schmidt hit .295 and drove in a team-high 30 RBI.

Junior Jenny Fletcher will hold down second base responsibilities after platooning last season. Fletcher hit .225 and had a .965 fielding percentage. She started 40 games last season.

Freshman Ashley Stewart returns to shortstop after



starting all 48 games last season. She hit .240 last season finishing second on the team with 116 assists.

For the first time in four seasons, the Lady Blues will have a new backstop after losing Julie Blaufuss to graduation. Looking to fill those shoes is junior Kim Woodson. Woodson was named the NJCAA Catcher of the Year after hitting .441 with 89 hits en route to All-America honors.

"We have a lot of experience on the infield," Carey said.

Also looking for playing time in the infield will be freshman Mikala Mohler. Mohler picked up a lot of playing time this fall with the injury to Schmidt. As a senior at high school powerhouse Mission Valley, Mohler was a three-time all-conference pick helping the Vikings to two state championships.

Fellow freshman Amanda Carey will redshirt and sit out this season after undergoing knee surgery in the fall. Carey was an all-state pick as a senior after hitting .480 and had only one error in 117 opportunities.

### Outfield

Anchoring down the outfield will be returning all-MIAA pick sophomore Tiffany Whitt (left) in centerfield.

Whitt finished sixth in the conference with her .348 batting average and team-leading 57 hits. After the MIAA season started, Whitt really turned it on hitting .369 in conference play.

Manning left field will be senior Molly Gleisberg. Gleisberg hit .254 over the duration of the season, but raised her batting average to .286 once MIAA play started.

Also hoping for playing time will be sophomore Katie Billington who started 38 games in right field batting .266 and driving in 10 runs.

Freshman Ashley Webb saw a lot of time this fall in the outfield. She was an all-conference selection at Bishop Miege High School.

### MIAA

The MIAA will again be a battle. Truman State won both the fifth regular season and second tournament title. They will return two-time MIAA MVP and all-America selection Elizabeth Economon.

### Outlook

For the Lady Blues to have a better season than the one before, the pressure will fall first on the pitching staff. With neither of the two hurlers having MIAA experience, the pitchers will have to be able to handle the demands of the long season.

"We have the confidence in our pitchers that they can handle the expectations we have for them," Carey said. "Even though both pitchers have not been through a full season of college softball, they both have a lot of experience with club teams and they are going to have to rely on that to get them through the season."

The 2003 squad hit .281, which was second in the MIAA and they are looking to improve on that mark.

In the field, the Lady Blues led the MIAA in fielding percentage with a .966 mark.

"We want to have more consistency in our at-bats," Carey said. "Every at bat is an important one and we need to get that mindset into our players."



**Career as a Lady Blue:** Has started 113 games hitting .270 with 90 hits and three home runs with 56 runs scored.

**As a junior in 2003:** Started all 43 games tallying 31 hits and 11 RBI with 14 runs scored. Had four hits in a win over Missouri Southern on April 15. Drove in the winning run in the Lady Blues 3-2 win over Central Missouri at the MIAA Tournament in the bottom of the eighth. Named to the MIAA Commissioner's Academic Honor Roll.

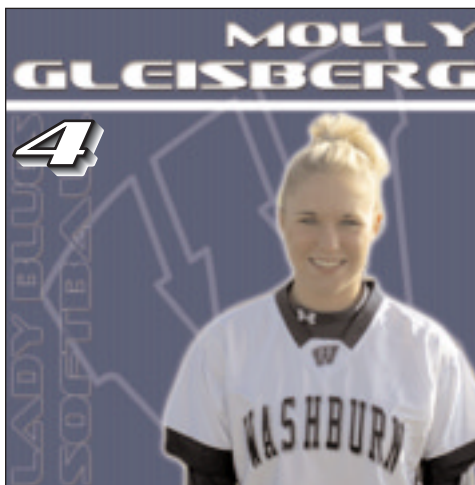
**As a sophomore in 2002:** Collected 40 hits starting 50 games for the Lady Blues hitting .280. Drove in 20 runs while scoring 29. Became only the seventh Lady Blue to score four runs in a single game against Bethany. Named to the MIAA Commissioner's Academic Honor Roll.

**As a freshman in 2001:** Appeared in 33 games starting 20 collecting 19 hits and driving in seven runs. Scored 13 runs. Was a perfect four of four in stolen bases. Collected three hits in 11 at-bats as a pinch hitter with one RBI and scoring two runs.

**Background:** A four-year letterwinner at Olathe East. Received first team 6A all-state honors as a senior and second team all-state, all-class accolades. Was also named first team all-Metro, all-Johnson County, all-Sun County and all-Sunflower league. As a junior was named first team all-Sunflower league and second team all-Metro. Was named second team all-league as a freshman. Team finished first in state her sophomore year. A three-year member of the honor roll.

**Personal:** Born July 20, 1982.

Daughter of John and  
Connie Gleisberg.  
Majoring in nursing.



### EXTRA BASES

5-6 • Senior

Outfield • Bats: Both • Throws: Right  
Olathe, Kan./Olathe East HS

### OFF THE FIELD

Favorite food: Chinese

Favorite book: A Child Called It

Favorite TV show: ER

Favorite movie: Pretty Woman

Favorite music group: Rascal Flatts

If I owned one CD: Garth Brooks  
Live

Favorite sport other Than the 1 you  
are playing: Volleyball

Advice to youngsters: Live life to the  
fullest

If I could live anywhere: Hawaii

Favorite sports announcer: Dick  
Vitale

Person in history I would want to  
meet: JFK

Favorite cartoon character: Tigger

Favorite professional team: Denver  
Broncos

Top sports moment: Winning MIAA  
Championship in 2001

I came to Washburn because...: of a  
softball scholarship and the  
nursing school



### GLEISBERG AT WASHBURN

Year	Avg.	GP-GS	AB	R	H	2B	3B	HR	RBI	TB	SLG	BB	HP	SO	OB%	SF	SH	SB-A	PO	A	E	Fld
2001	.279	33-20	68	13	19	1	0	0	8	20	.294	5	0	20	.329	0	2	4-4	11	1	0	1.00
2002	.280	53-50	143	29	40	9	0	3	20	58	.406	6	0	22	.309	0	5	6-7	42	0	1	.977
2003	.254	43-43	122	14	31	3	0	0	11	34	.279	7	1	14	.300	0	3	0-0	28	0	1	.966
Totals	.270	129-113	333	56	90	13	0	3	39	112	.336	18	1	56	.310	0	10	10-11	81	1	2	.976

**EXTRA BASES**

5-3 • Senior

Second Base • Bats: Right • Throws: Right  
DeSoto, Kan./DeSoto HS**OFF THE FIELD**

Favorite food: Chinese

Favorite TV show: The Bachelor

Favorite movie: Wedding Singer

Favorite music group: Stephenwolf

If I owned one CD: P-Diddy

In the movie of my life \_\_\_\_ would  
play me: Olsen Twins or (sister)  
SissyFavorite sport other than the 1 you  
are playing: FootballAdvice to youngsters: Have a posi-  
tive attitude and set high expecta-  
tions for yourselfIf I could live anywhere: Australia  
with the Crocodile Hunter

After a game I: Eat dinner

Favorite cartoon character: Shrek

Favorite professional team: Kansas  
City ChiefsTop sports moment: Winning MIAA  
Championship in 2001I came to Washburn because...: I  
wanted a good education and to  
play a college sport I enjoy**At Washburn as a Lady Blue:** Has 43 hits and 37 runs scored in her career. Also has recorded a .946 fielding percentage.**As a junior in 2003:** Started 39 of 43 games knocking out 20 hits and driving in six while scoring 13 runs. Drove in the game-winning run in the Lady Blues 3-1 win over Kutztown in Florida. In the following game she scored the Lady Blues' only run in a 1-0 win over Wisconsin-Parkside.**As a sophomore in 2002:** Started 23 games appearing in 35 collecting eight hits, scoring 11 runs driving in seven.**As a freshman in 2001:** Appeared in 42 games starting 35 hitting .221 with 15 hits, two doubles a triple and eight RBI. Finished third on the team with 78 assists from third base. She drove in a career-high three runs with a triple against Southwest State in a 10-2 win.**Background:** A member of the honor roll. A preseason pick for one of the best shortstops in the Kansas City area by the *Shawnee Journal Herald*. Hit .452 and recorded a .986 fielding percentage. A three-year letter-winner. Team won state her junior season and finished third her senior season.**Personal:** Born April 28, 1982. Daughter of William and Katherine Fletcher. Her sister, Sissy, was a four-year member of the softball team at Central Missouri. Majoring in elementary education.**FLETCHER AT WASHBURN**

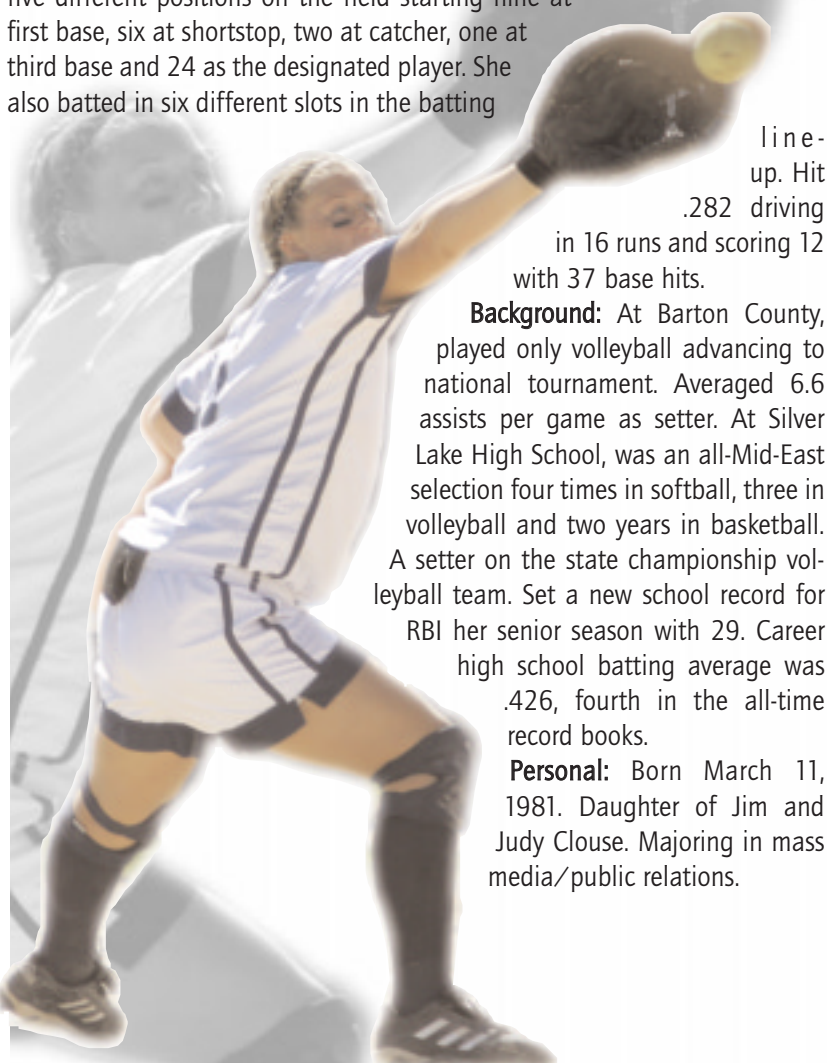
Year	Avg.	GP-GS	AB	R	H	2B	3B	HR	RBI	TB	SLG	BB	HP	SO	OB%	SF	SH	SB-A	PO	A	E	Fld
2001	.221	42-35	68	13	15	2	1	0	8	19	.279	3	0	14	.254	0	5	0-1	33	78	11	.910
2002	.143	35-23	56	11	8	2	1	0	7	12	.214	10	0	16	.273	0	1	0-0	39	36	3	.962
2003	.225	40-39	89	13	20	2	0	0	6	22	.247	5	4	23	.296	0	8	3-3	75	69	5	.966
Totals	.202	117-97	213	37	43	6	2	0	21	53	.249	18	4	53	.277	0	14	3-4	147	183	19	.946

**Career as a Lady Blue:** Enters senior season third on the all-time putout chart needing only 210 to move into first place. She is ninth on the career hits list with 140 and eighth on the career RBI list with 85. Her career .988 fielding percentage is the highest in Lady Blues' history.

**As a junior in 2003:** Named first team All-MIAA for the second straight season after batting .300 with 45 hits and 28 RBI and 21 runs scored. She drove in four RBI against Park on March 15 and drove in the winning run in the Lady Blues 5-4 win over Fort Hays State in bottom of the 10th. Named to MIAA Commissioner's Academic Honor Roll.

**As a sophomore in 2002:** Named first team All-MIAA after leading team with 41 RBI hitting .337 with 60 hits starting all 59 games. Had 20 putouts in 11-inning game with Missouri Western setting a new school record. Finished fifth in MIAA in RBI and doubles, tenth in on-base percentage and 11th in batting average. Named to MIAA Commissioner's Academic Honor Roll.

**As a freshman in 2001:** Played in 45 games starting 42 for the Lady Blues in five different positions on the field starting nine at first base, six at shortstop, two at catcher, one at third base and 24 as the designated player. She also batted in six different slots in the batting



## EXTRA BASES

5-6 • Senior

Outfield • Bats: Left • Throws: Left  
Silver Lake, Kan./Barton County CC

## OFF THE FIELD

**Favorite food:** Ruby Tuesday's

**Favorite book:** Oh the Places you'll go - Dr. Seuss

**Favorite TV show:** Playmakers

**Favorite movie:** \*61

**Favorite music group:** Rascal Flatts

**If I owned one CD:** Jock Jams

**Favorite sport other than the 1 you are playing:** Volleyball

**Advice to youngsters:** Work hard in whatever you do, it'll eventually pay off.

**If I could live anywhere:** Bahamas

**After a game I: Eat**

**Favorite sports announcer:** Mitch Holthaus

**Person in history I would want to meet:** My Grandpa

**Favorite cartoon character:** Po Teletubbie

**I came to Washburn because:** I missed softball and it was close to home

## CLOUSE AT WASHBURN

Year	Avg.	GP-GS	AB	R	H	2B	3B	HR	RBI	TB	SLG	BB	HP	SO	OB%	SF	SH	SB-A	PO	A	E	Fld
2001	.282	45-42	131	12	37	5	0	0	16	42	.321	6	0	9	.314	0	8	0-0	90	19	7	.940
2002	.337	59-59	178	31	60	16	0	4	41	88	.494	23	0	18	.407	3	9	1-1	487	23	6	.988
2003	.300	48-48	150	21	45	9	1	2	28	62	.413	11	2	8	.349	3	7	2-2	454	29	0	1.000
<b>Totals</b>	<b>.309</b>	<b>152-149</b>	<b>459</b>	<b>64</b>	<b>142</b>	<b>30</b>	<b>1</b>	<b>6</b>	<b>85</b>	<b>192</b>	<b>.418</b>	<b>40</b>	<b>2</b>	<b>35</b>	<b>.363</b>	<b>6</b>	<b>24</b>	<b>3-3</b>	<b>1031</b>	<b>71</b>	<b>13</b>	<b>.988</b>



**EXTRA BASES**

5-5 • Senior

Third Base • Bats: Right • Throws: Right  
Topeka, Kan./Seaman HS**OFF THE FIELD**

Favorite food: Mexican

Favorite Book: The Count of Monte Cristo

Favorite TV show: Golden Girls

Favorite movie: Hope Floats

Favorite music group: Indigo Girls

If I owned one CD: Montster Ballads

Favorite sport other than the 1 you are playing: Volleyball

Advice to youngsters: Shoot for the moon, even if you miss you'll land among the stars

If I could live anywhere: Arizona

After a game I: can't wait to take a shower

Favorite cartoon character: Wile E. Coyote

Pregame superstition: Leave cleats untied until after warmups

If I won the lottery, I would first buy a...: Ford F-150 Truck

**Career as a Lady Blue:** Has batted .271 for her career starting 141 of 144 games with 104 hits and 16 home runs with 47 runs scored and 82 RBI with a career slugging percentage of .474. Enters the season 13th on the all-time hit chart and ninth on the RBI list.

**As a junior in 2003:** Was named first team All-MIAA at third base after hitting .295 with four home runs, nine doubles and 30 RBI with 14 runs scored. Had a team season-high six total bases going 3 for 3 with 2RBI in a 3-0 win over Mass-Lowell in Florida. Named to MIAA Commissioner's Academic Honor Roll.

**As a sophomore in 2002:** Received first team All-MIAA designated player accolades after hitting six home runs with 29 hits and 27 RBI playing in 47 games. Had a slugging percentage of .479. Against Truman State in doubleheader, drove in eight runs with two home runs finishing second game with a walk-off home run. Named to MIAA Commissioner's Academic Honor Roll.

**As a freshman in 2001:** One of two Lady Blues to start all 49 games in which she hit a team-leading six home runs finishing fourth on the team with 25 RBI.

Also finished second on the team with nine doubles. She finished 13th in the MIAA in slugging percentage and third in home runs.

**Background:** Named team MVP her senior season. An all-state selection her junior season. Received all-Centennial League honors her sophomore through senior seasons and an all-city selection during the same span. A member of the National Honor Society and a Cum Laude graduate.

**Personal:** Born Sept. 8, 1982. Daughter of Dale and Manya Schmidt. Majoring in mass media

**SCHMIDT AT WASHBURN**

Year	Avg.	GP-GS	AB	R	H	2B	3B	HR	RBI	TB	SLG	BB	HP	SO	OB%	SF	SH	SB-A	PO	A	E	Fld
2001	.272	49-49	136	20	37	9	0	6	25	64	.471	9	2	23	.327	0	9	1-1	58	113	15	.919
2002	.244	47-44	119	13	29	8	1	6	27	57	.479	18	0	27	.338	2	4	0-0	10	0	0	1.000
2003	.295	48-48	129	14	38	9	1	4	30	61	.473	16	3	17	.375	4	7	0-0	36	124	8	.952
Totals	.271	144-141	384	47	104	26	2	16	82	182	.474	43	5	67	.374	6	20	1-1	104	237	23	.937

**Career as a Lady Blue:** Batting .267 with 21 runs scored, 35 base hits and 16 RBI with a .347 on base percentage.

**As a sophomore in 2002:** Hit .257 starting 34 games appearing in 45 with 13 runs scored and 27 base hits and nine RBI and was named honorable mention All-MIAA as a utility player. Named to the MIAA Commissioner's Academic Honor Roll. Was 2 for 3 with the only run scored in a 1-0 win over Texas Woman's in the third game of the season.

**As a freshman in 2002:** Appeared in 19 games starting 11 with a .308 batting average. Collected eight hits and seven RBI with two doubles and eight runs scored. Was 2 for 2 with two runs scored and 3 RBI in the Lady Blues' 13-0 win over Howard-Payne in the second game of the season.

**Background:** At Lee's Summit High, Sells was named the team's defensive MVP during the 1999 and 2000 seasons. She was also an all-district selection for the 1998, 1999 and 2000 seasons. She was also a second team all-conference selection during the 1998 and 1999 seasons and an honorable mention choice in 2000.

**Personal:** Born Nov. 16, 1982. Daughter of Jay and Kathy Sells. Majoring in physical education.



### EXTRA BASES

5-3 • Junior

Utility • Bats: Right • Throws: Right  
Lee's Summit, Mo./Lee's Summit HS

### OFF THE FIELD

**Favorite food:** Spaghetti and Tacos

**Favorite book:** Harry Potter Series

**Favorite TV show:** Tarzan or Jeopardy

**Favorite movie:** The Patriot

**Favorite music group:** Rascal Flatts

**If I owned one CD:** Garth Brooks In Pieces

**Favorite sport other Than the 1 you are playing:** Soccer

**Advice to youngsters:** Try as hard as you can and in the end it will pay off

**If I could live anywhere:** Ireland

**After a game I: Eat**

**Favorite sports announcer:** Bob Davis

**Person in history I would want to meet:** John Wayne

**Favorite cartoon character:** Scooby Doo

**Favorite Profesional Team:** Kansas City Chiefs and Royals

**I came to Washburn because:** It was close to home and it was a beautiful and welcoming campus

### SELLS AT WASHBURN

Year	Avg.	GP-GS	AB	R	H	2B	3B	HR	RBI	TB	SLG	BB	HP	SO	OB%	SF	SH	SB-A	PO	A	E	Fld
2002	.308	19-11	26	8	8	2	0	0	7	10	.385	5	1	2	.438	0	4	0-0	3	1	2	.667
2003	.257	45-34	105	13	27	1	0	1	9	31	.295	10	0	16	.322	0	7	0-0	18	11	4	.879
Totals	.267	64-45	131	21	35	3	0	1	16	41	.313	15	1	18	.347	0	11	0-0	21	12	6	.846



**EXTRA BASES**

5-7 • Sophomore

Short Stop • Bats: Right • Throws: Right  
Anaheim, Calif./Canyon HS**OFF THE FIELD**

Favorite food: Anything Free

Favorite Book: Cosmo

Favorite TV show: Trading Spaces

Favorite movie: Dumb and Dumber

Favorite music group: Yanni

If I owned one CD: Vanilla Ice

Favorite sport other than the 1 you  
are playing: CricketIn the movie of my life \_\_\_\_ would  
play me: Britney Spears

After a game I: sleep

Favorite cartoon character: Eddy

If I won the lottery, I would first buy  
a \_\_\_\_: A chinchillaFavorite professional team: Los  
Angeles LakersFavorite sports announcer: Chic  
Hearn

ESPN Sportscenter Fantasy: to host it

Person in history I would like to  
meet: Chewbacca

**As a freshman in 2003:** She started all 48 games at shortstop for the Lady Blues batting .240 with 31 hits, including five doubles and nine RBI with 15 runs scored. Also stole three bases. Hit two doubles in win over Central Missouri on April 18 and led the team with 116 assists.

**Background:** She gained second team all-conference honors after batting .400. She is a four-year member of the Varsity and a second team choice after her first three seasons at Canyon High. Her high school team was ranked as high as 14th in the National Fast Pitch Coaches Association Poll. Also played water polo in high school.

**Personal:** Born on March 10, 1984.

Daughter of Marcelo and Vicki Vazquez. Majoring in psychology.

**STEWART AT WASHBURN**

Year	Avg.	GP-GS	AB	R	H	2B	3B	HR	RBI	TB	SLG	BB	HP	SO	OB%	SF	SH	SB-A	PO	A	E	Fld
2003	.240	48-48	129	15	31	5	0	0	9	36	.279	8	3	31	.300	0	8	3-3	67	116	21	.897
Totals	.240	48-48	129	15	31	5	0	0	9	36	.279	8	3	31	.300	0	8	3-3	67	116	21	.897

**As a freshman in 2003:** Appeared in 43 games starting 38 collecting 29 hits with two doubles and a triple batting .266. Also drove in 10 runs and scored 16. She drove in four runs in a win over Southwet Baptist on March 18.

**Background:** As senior at Pattonville HS, she was named first team all-conference and first team all-district. As a junior she was named the team's MVP, and was a first team all-district choice and second team all-conference pick after gaining all-conference honorable mention accolades as a freshman and sophomore. For her club team she hit .364 with a .489 on base percentage and led the team with 43 stolen bases in 47 attempts, 68 runs scored and 108 base hits. The team finished fifth at the

ASA Hall of Fame Tournament, ninth at the NSA National Tournament and 65th at the ASA National Tournament.

**Personal:** Born on Oct. 8, 1983. Daughter of Roy and Gaye Billington. Majoring in business.



10

### EXTRA BASES

5-4 • Sophomore

Outfield • Bats: Both • Throws: Right  
Maryland Heights, Mo./Pattonville HS

### OFF THE FIELD

**Favorite food:** Chocolate & Peanut Butter

**Favorite book:** The Horse Whisperer

**Favorite TV show:** Friends

**Favorite movie:** Old School

**If I owned one CD:** Garth Brooks - Double Live

**Favorite sport other Than the 1 you are playing:** Soccer

**If I could live anywhere:** St. Louis

**After a game I: Eat**

**Favorite sports announcer:** Jack Buck

**Person in history I would want to meet:** Harry Carrey

**Favorite cartoon character:** Mike Wozowski

**Favorite Professional Team:** St. Louis Cardinals

**If I won the lottery, I would first buy a \_\_\_\_:** Mercedes convertible



### BILLINGTON AT WASHBURN

Year	Avg.	GP-GS	AB	R	H	2B	3B	HR	RBI	TB	SLG	BB	HP	SO	OB%	SF	SH	SB-A	PO	A	E	Fld
2003	.266	43-38	109	16	29	2	1	0	10	33	.303	7	1	11	.316	0	15	1-2	23	8	1	.969
Totals	.266	43-38	109	16	29	2	1	0	10	33	.303	7	1	11	.316	0	15	1-2	23	8	1	.969

## 2004 LADY BLUES

**EXTRA BASES**

5-7 • Sophomore  
 Outfield • Bats: Right • Throws: Right  
 Overland Park, Kan./Blue Valley  
 Northwest HS

**OFF THE FIELD**

**Favorite food:** Orange Sherbert ice cream  
**Favorite Book:** In Cold Bold  
**Favorite TV show:** Friends  
**Favorite movie:** My Best Friend's Wedding  
**Favorite music group:** Tim McGraw  
**If I owned one CD:** Tim McGraw's Greatest Hits  
**Favorite sport other than the 1 you are playing:** Basketball  
**If I could live anywhere:** Texas  
**After a game I: eat**  
**Favorite cartoon character:** Cronck - from Emperor's New Groove  
**Pregame superstition:** Pitching to Katie Billington  
**If I won the lottery, I would first buy a \_\_\_\_:** Ford Cobra Mustang Covertable  
**In the story of my life \_\_\_\_ would play me:** Debra Messing  
**Favorite sports announcer:** Dick Vitale  
**Favorite pro team:** Kansas City Chiefs

**As a freshman in 2003:** Received first team All-MIAA honors after leading the Lady Blues and finishing sixth in the MIAA with a .348 batting average. Her 36 runs scored were third in the conference while also finishing sixth in stolen bases and eighth in on base percentage. She recorded 57 hits and drove in 19 while starting all 48 games in center field. She tied a school record with six at bats against Missouri Southern and had four hits in a single game twice.

**Background:** She was named second team all-Metro as a junior and first team all-Eastern Kansas League and second team all-Sun County after batting .314. As a sophomore she was named first team all-EKL, second team all-Sun County and second team all-Johnson County after batting .310. Blue Valley Northwest finished fourth in the 6A Kansas State Tournament her sophomore season. She was also a member of the schools cross country and basketball teams.

**Personal:** Born on Oct. 5, 1983. Daughter of Dan and Laura Jones. Majoring in business with accounting emphasis.

**WHITT AT WASHBURN**

Year	Avg.	GP-GS	AB	R	H	2B	3B	HR	RBI	TB	SLG	BB	HP	SO	OB%	SF	SH	SB-A	PO	A	E	Fld
2003	.348	48-48	164	36	57	3	0	2	19	66	.402	9	4	33	.393	1	7	12-13	24	3	1	.964
Totals	.348	48-48	164	36	57	3	0	2	19	66	.402	9	4	33	.393	1	7	12-13	24	3	1	.964



**As a freshman in 2003:** She received honorable mention All-MIAA honors after batting .257 appearing in 39 games starting 19. She hit four home runs driving in 15 runs and scoring 11 with 19 hits. Hit her first home run as a pinch hitter against Southwestern Oklahoma. She was 3 for 3 with three RBI and two runs scored against Bloomfield and stole two bases as well on March 19.

**Background:** She was named first team all-state, first team all-Metro, a first team 6A all-State coaches choice and first team all-Johnson County team. She batted .420 last season driving in 24 runs stealing 26 bases in 29 attempts.

**Personal:** Born on Feb. 16, 1984. Daughter of Mike and Julie Huske. Majoring in elementary education.



### EXTRA BASES

5-5 • Sophomore

Utility • Bats: Right • Throws: Right  
Overland Park, Kan./Shawnee Mission  
West HS

### OFF THE FIELD

**Favorite food:** Boneless Buffalo wings from Chili's

**Favorite TV show:** That 70's Show

**Favorite movie:** Steel Magnolias

**If I owned one CD:** Debbie Gibson's Greatest Hits

**Favorite sport other Than the 1 you are playing:** Football

**If I could live anywhere:** Hawaii

**After a game I: Eat**

**Favorite Professtional Team:** New York Yankees

**If I won the lottery, I would first buy a \_\_\_\_:** a huge house in California

**Advice to youngsters:** Treat others the way you want them to treat you.

**Top sports moment:** Game winning hit at regionals as a junior in high school

**ESPN Sportscenter Fantasy:** A clip of me winning the World Series for my team

## HUSKE AT WASHBURN

Year	Avg.	GP-GS	AB	R	H	2B	3B	HR	RBI	TB	SLG	BB	HP	SO	OB%	SF	SH	SB-A	PO	A	E	Fld
2003	.257	39-19	74	11	19	3	0	4	15	34	.459	5	2	17	.317	1	3	2-3	8	0	0	1.000
Totals	.257	39-19	74	11	19	3	0	4	15	34	.459	5	2	17	.317	1	3	2-3	8	0	0	1.000

## 2004 LADY BLUES NEWCOMERS



19

5-7 • Junior  
Catcher • Bats: Right • Throws: Right  
Overland Park, Kan.  
Johnson County CC

**Background:** Was named the National Fastpitch Coaches Association Catcher of the Year after batting .441 with 89 hits, 16 doubles 48 RBI which led Johnson County. She was also named first team NFCA All-America, first team NJCAA All-America, first team all-region and conference - all her sophomore year and was named the Jayhawk Conference's Freshman of the Year, first team all-conference and second team all-region. She was also an Academic All-America pick as a sophomore. At Shawnee Mission Northwest High School, she was a three-time all-county, all-metro and two time all-state selection.

**Personal:** Born Jan. 29, 1983. Daughter of Lori Brunts and Roy Herriott. Majoring in exercise physiology.



## OFF THE FIELD

<b>Favorite food:</b> Anything with sugar	<b>If I could live anywhere:</b> on the beach in Florida
<b>Favorite Book:</b> Living the Dream	<b>Favorite cartoon character:</b> The Roadrunner
<b>Favorite TV show:</b> The Bachelor	<b>Pregame superstition:</b> Pray
<b>Favorite movie:</b> For the Love of the Game	<b>If I won the lottery, I would first buy a ____:</b> huge house
<b>Favorite music group:</b> David Crowder Band	<b>In the story of my life ____ would play me:</b> my sister
<b>If I owned one CD:</b> Nicole C. Mullen	<b>Favorite sports announcer:</b> John Madden
<b>Favorite sport other than the 1 you are playing:</b> Volleyball	<b>Favorite pro team:</b> Kansas City Chiefs

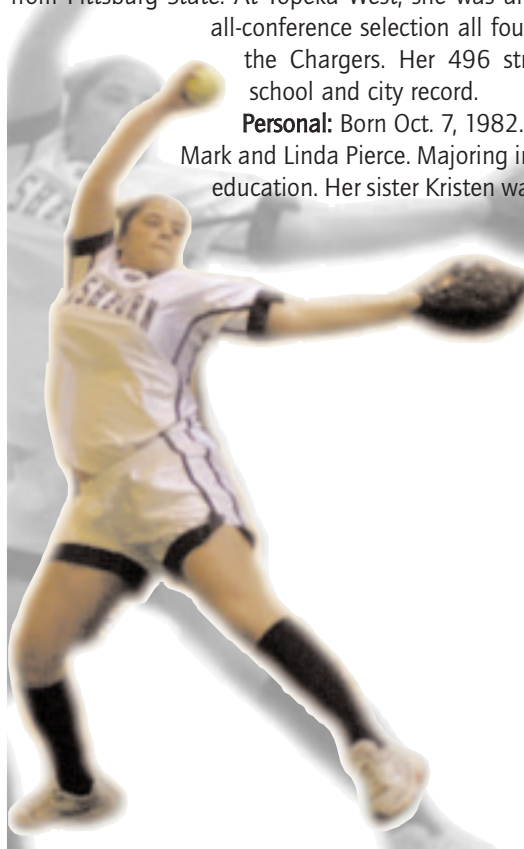


22

5-8 • Sophomore  
Pitcher • Bats: Right • Throws: Right  
Topeka, Kan.  
Pittsburg State University

**Background:** Sat out last season due to intraconference transfer from Pittsburg State. At Topeka West, she was an all-city and all-conference selection all four seasons for the Chargers. Her 496 strikeouts is a school and city record.

**Personal:** Born Oct. 7, 1982. Daughter of Mark and Linda Pierce. Majoring in elementary education. Her sister Kristen was a four-year member of the Lady Blues basketball team.



## OFF THE FIELD

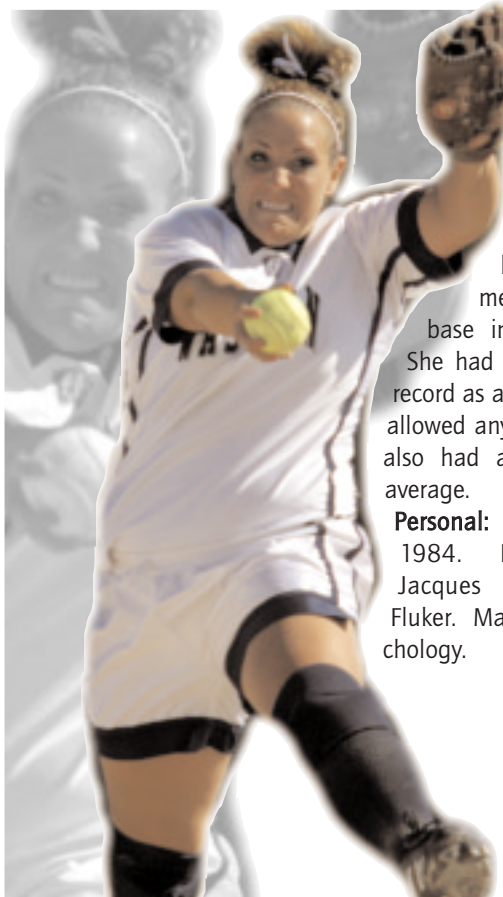
<b>Favorite food:</b> Mom's meatloaf	<b>Person from history I most want to meet:</b> Jesus
<b>Favorite Book:</b> Summer Sisters	<b>If I won the lottery, I would first buy a ____:</b> a house and a 4-runner
<b>Favorite TV show:</b> Friends	<b>Advice to youngsters:</b> Always see room for improvement in yourself
<b>Favorite movie:</b> How to lose a guy in 10 days and Miss Congeniality	<b>Favorite pro team:</b> Florida Marlins
<b>Favorite sport other than the 1 you are playing:</b> Basketball	<b>Top sports moment:</b> Striking out 28 batters in a 15-inning game
<b>If I could live anywhere:</b> Sydney, Australia	
<b>Favorite cartoon character:</b> Ernie from Sesame Street	



# JOANNE FLUKER

6

5-9 • Freshman  
Pitcher • Bats: Right • Throws: Right  
Valley Center, Kan.  
Valley Center HS



## Background:

Was a first team all-league pitcher and second team first baseman as well as honorable mention at third base in high school. She had a 9-0 pitching record as a senior and not allowed any runs, and she also had a .417 batting average.

**Personal:** Born Sept. 7, 1984. Daughter of Jacques and Jarene Fluker. Majoring in psychology.

# ASHLEY WEBB

12

5-11 • Freshman  
Outfield • Bats: Right • Throws: Right  
Prairie Villiage, Kan.  
Bishop Miege HS



## Background:

Was a two-time first team all-conference selection. **Personal:** Born Nov. 5, 1984. Daughter of Bobby and Carol Webb. Undecided on major.

## OFF THE FIELD

**Favorite food:** Salsa  
**Favorite Book:** Letters from Rifka  
**Favorite TV show:** Sportscenter  
**Favorite movie:** Scary Movie  
**Favorite music group:** Linkin Park  
**If I owned one CD:** Eminem  
**Favorite sport other than the 1 you are playing:** Basketball  
**If I could live anywhere:** Australia  
**Favorite pro team:** Atlanta Braves

**Favorite cartoon character:** Bugs Bunny  
**Pregame superstition:** Put on makeup, listen to Headstrong, go throught game in mind  
**If I won the lottery, I would first buy a \_\_\_\_ :** a black Hummer  
**In the story of my life \_\_\_\_ would play me:** Mikala Mohler  
**Favorite sports announcer:** Joe Buck

## OFF THE FIELD

**Favorite food:** Bread  
**Favorite Book:** Skin Deep  
**Favorite TV show:** The Bachelor  
**Favorite movie:** Sister Act 2  
**Favorite sport other than the 1 you are playing:** Basketball  
**If I could live anywhere:** Sydney, Jamaica  
**Favorite cartoon character:** Stewy from Family Guy  
**Person from history I most want to meet:** Harriet Tubman  
**If I won the lottery, I would**

**first buy a \_\_\_\_ :** new car  
**Advice to youngsters:** never give up on anything you want to happen  
**Favorite pro team:** Kansas City Chiefs  
**Top sports moment:** Winning third state championship in basketball  
**If I owned one CD:** The Mideducation of Laurny Hill



## 2004 LADY BLUES NEWCOMERS

AMANDA  
CAREY

23

5-8 • Freshman

Shortstop • Bats: Right • Throws: Right

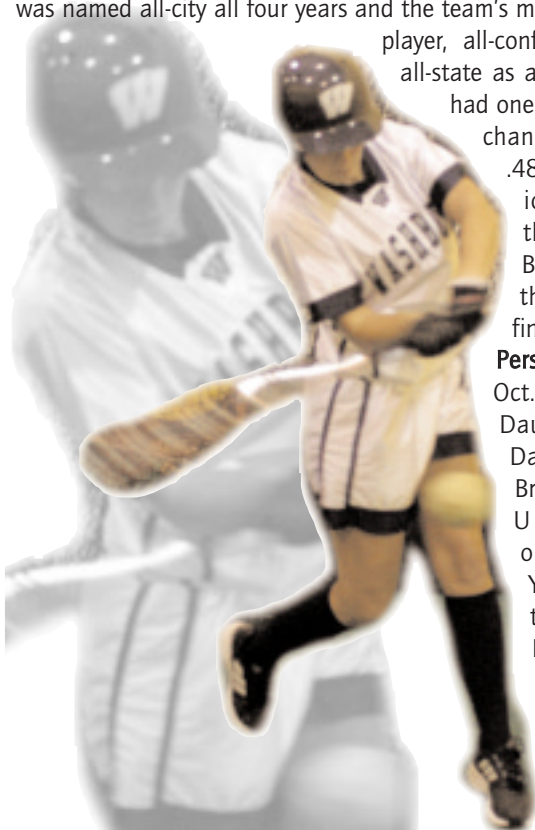
Topeka, Kan.

Washburn Rural HS

**Background:** Will sit out the 2004 Lady Blues' season after undergoing knee surgery in the fall. At Washburn Rural, she was named all-city all four years and the team's most valuable player, all-conference and all-state as a senior. She had one error in 117 chances hitting

.480 as a senior leading the Junior Blues to a third place finish at state.

**Personal:** Born Oct. 5, 1984. Daughter of Dale and Brenda Carey. Undecided on major. Younger sister of Lady Blues head softball coach Lisa and assistant coach D.J.

MIKALA  
MOHLER

25

5-4 • Freshman

Infielder • Bats: Right • Throws: Right

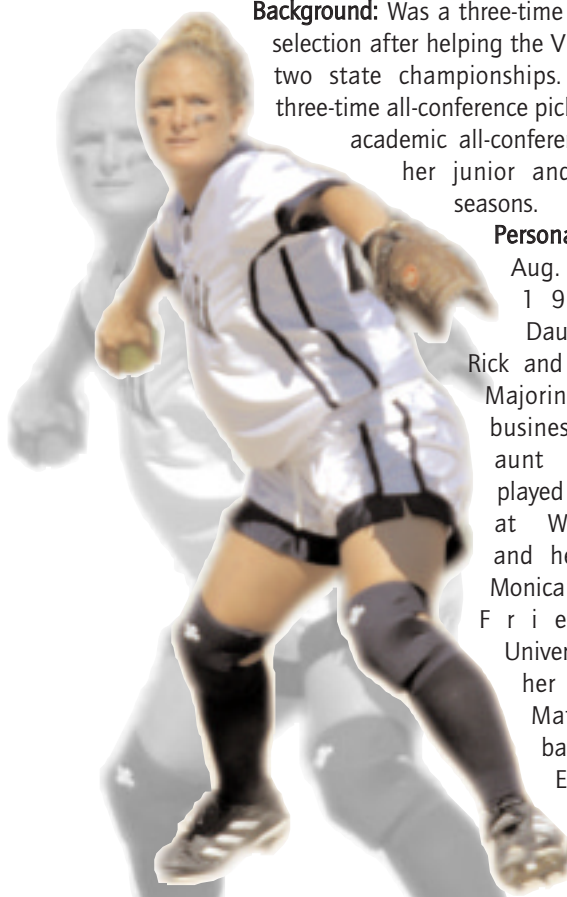
Harveyville, Kan.

Mission Valley HS

**Background:** Was a three-time all-state selection after helping the Vikings to two state championships. Also a three-time all-conference pick and an academic all-conference pick her junior and senior seasons.

**Personal:** Born Aug. 27, 1985.

Daughter of Rick and Mohler. Majoring in business. Her aunt Judy played softball at Washburn and her sister Monica plays at Friends University and her brother Matt plays baseball at Emporia State.



## OFF THE FIELD

**Favorite food:** Chinese**Favorite Book:** The Rock says**Favorite TV show:** Friends**Favorite movie:** How to lose a guy in 10 days**Favorite music group:** George Strait**If I owned one CD:** George Strait's Greatest Hits**Favorite sport other than the 1 you are playing:** Basketball**If I could live anywhere:** on the beach**Favorite cartoon character:**

Bugs Bunny

**Pregame superstition:** Don't mess up the chalk lines**If I won the lottery, I would first buy a \_\_\_\_:** a Hummer**In the story of my life \_\_\_\_****would play me:** Kate Hudson**Favorite sports announcer:** Kirk Herbstreit**After a game I \_\_\_\_:** eat**Advice to youngsters:** Follow your dreams

## OFF THE FIELD

**Favorite food:** Turkey Tetrazinni**Favorite sport other than the 1 you are playing:** Basketball**If I could live anywhere:**

Florida, by the beach

**Favorite cartoon character:**

Sponge Bob Squarepants

**Person from history I most****want to meet:** Ben Franklin**Favorite Music Group:** Creed**If I won the lottery, I would****first buy a \_\_\_\_:** Cadillac Escalade**Favorite movie:** Liar Liar**Favorite TV show:** Will & Grace**In the story of my life \_\_\_\_****would play me:** Joanne Fluker**Favorite pro team:** Kansas City Chiefs**Top sports moment:** Winning state championship in softball**ESPN Sportscenter Fantasy:**

Making top 10 highlights

**After a game:** I eat**Pregame superstitions:** Using the same hair-tie