

In 2003 the Washburn Lady Blues opened the season with a 15-1 record, including wins over eventual national finalists North Alabama and Concordia-St. Paul, before suffering a tough losing stretch to close the season.

A number of key injuries and inconsistency plagued the Lady Blues, who went from MIAA champions to a fifth place conference finish. To revert back to form of 2002 and the start of last season, Washburn coach Chris Herron added a talented group to newcomers to a solid returning core in hopes to contend for another MIAA title.

Returners

Washburn returns seven members of last year's squad, including five that started matches last season.

Headlining the group is outside hitter Dani McHenry, who became the first Washburn player to earn AVCA All-American honors last season as a junior. McHenry led the MIAA and broke the school record with a .340 hitting percentage. She had 558 kills, which was second most in team history and 435 digs and hopes to leave her marks in the career record books after this season.

Senior middle hitter Katie Brandt was possibly the missing piece to the puzzle for a run at the MIAA title and NCAA postseason for Washburn last year. After a solid start of the season, where she hit .289 with 0.91 blocks per game, Brandt suffered a season-ending hip injury in the middle of the conference season. She will be relied on heavily in the middle in her senior season in 2004.

After earning NAIA All-American honors at Ottawa, senior outside hitter Emily Foster showed flashes of dominance in NCAA Division II play. She had 221 kills and numerous big plays for the Lady Blues but lacked the consistency the squad needs from her this season.

Wendy Kobbeman will look to take over libero duties after playing defensive specialist for the Lady Blues the past two seasons. Kobbeman has experience and leadership as the top returning defensive player for the Lady Blues.

Sophomore Julie Sackman will run the show again as the setter for Washburn. Sackman was solid with a .272 hitting percentage and 1120 assists as a freshman in 2003 and will need to step up even more in 2004.

Senior Ashley Smith and sophomore Valerie

Peterson saw action last season and will play key reserve roles again. Smith is slated as the backup setter, while Peterson will add depth outside.

Newcomers

The Lady Blues added seven players to the squad, including two transfers and five freshman.

Jami Sleichter is a transfer from Kansas State that will compete for the libero and a defensive specialist spot, while sophomore Anna Byers will add much-needed size in the middle. Byers was on the squad at Pittsburg State originally and spent last year as a redshirt for Washburn due to MIAA transfer rules.

Freshmen Erica Cowhick (Topeka, Kan./Shawnee Heights), Mandi Cox (Richmond, Kan./Central Heights), Monica Miesner (Florissant, Mo./Trinity Catholic HS), Ashley Reider (Lansing, Kan./Lansing HS) and Ashley Ruzick (Lenexa, Kan./St. Thomas Aquinas HS) will add depth and be counted on to contribute for the Lady Blues.

Cowhick was the 5A KVA Player of the Year in Kansas and will be a defensive specialist, while Miesner, Reider and Ruzick will add depth at outside hitter. Cox will give the Lady Blues added depth at middle hitter.

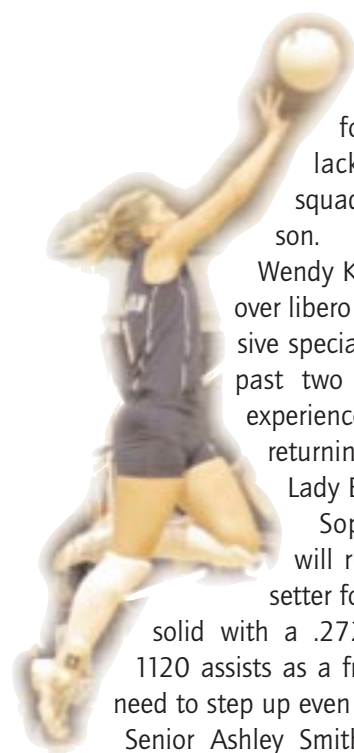
The MIAA

After faltering down the stretch to finish in fifth place in 2003, Washburn hopes to be in contention in the MIAA title chase this season. The Lady Blues were picked fourth in the MIAA Preseason Coaches Poll in 2004. Truman, which was selected as a strong favorite, grabbed eight first place votes to top the poll, while Central Missouri State and Pittsburg State were second and third respectively. The top three schools were ranked in the AVCA Division II Preseason Top 25, while Washburn received votes for the poll.

Emporia State was predicted fifth, Missouri Western sixth, Northwest Missouri seventh and Missouri Southern and Southwest Baptist rounded out the poll at eighth and ninth.

2004 MIAA PRESEASON COACHES POLL

School.....	Pts.
1. Truman (8).....	64
2. Central Missouri State	54
3. Pittsburg State (1)	47
4. WASHBURN	45
5. Emporia State	34
6. Missouri Western	32
7. Northwest Missouri State	23
8. Missouri Southern	16
9. Southwest Baptist	9





HEAD COACH CHRIS HERRON



Chris Herron
Head Coach

Chris Herron

Herron's Year By Year Record

2002 Washburn 29-5
2003 Washburn 26-10

at Washburn - 55-15
(2 seasons)

2001 Benedictine . . . 32-6
2000 Benedictine . . . 30-8
1999 Benedictine . . . 13-15

at Benedictine - 75-29
(3 seasons)

High School

1998 Tonganoxie . . . 34-6
1997 Tonganoxie . . . 31-6
1996 Tonganoxie . . . 29-7
1995 Tonganoxie . . . 33-2
1994 Tonganoxie . . . 30-5
1993 Tonganoxie . . . 35-4
1992 Tonganoxie . . . 28-7
1991 Tonganoxie . . . 28-7
1990 Tonganoxie . . . 24-9
1989 Tonganoxie . . . 28-5
1988 Tonganoxie . . . 21-8
1987 Tonganoxie . . . 32-5
1986 Tonganoxie . . . 13-17
1985 Golden City, Mo. 16-5
1984 Golden City, Mo. 5-12

387-105 overall
(15 seasons)

Combined College/High School

517-149
(.776)

Washburn head coach Chris Herron is in his third season at Washburn after leading the Lady Blues to the top two winningest seasons in school history. He has a 55-15 combined record at Washburn.

In his first season Herron took the Washburn program to new heights winning its first MIAA Championship and its first appearance in the NCAA Playoffs with a 29-5 record. He was named MIAA Coach of the Year.

The Lady Blues also entered the AVCA Division II Top 25 for the first time in school history.

In his second season in 2003, Herron led Washburn to a 26-10 record. The Lady Blues started 15-1 and were ranked as high as No. 19 in the country before injuries derailed their shot at postseason play.

Herron was named head coach of the Washburn volleyball team on March 25, 2002.

Herron spent the previous three seasons as the head coach of Benedictine College, where he compiled a 75-29 record. After going 13-15 in his first year in 1999, Herron guided the Ravens to their first-ever Heart of America Athletic Conference title and the squad's highest win total ever with a 30-8 record in 2000.

He led the Ravens to a 32-6 record last fall and garnered HAAC Coach of the year honors for the second straight season. The squad also won its first-ever HAAC Postseason Conference

Tournament
championship
in 2001.

Benedictine also cracked the national top 25 poll for the first time in school his-



tory, by finishing 23rd in the final NAIA rankings.

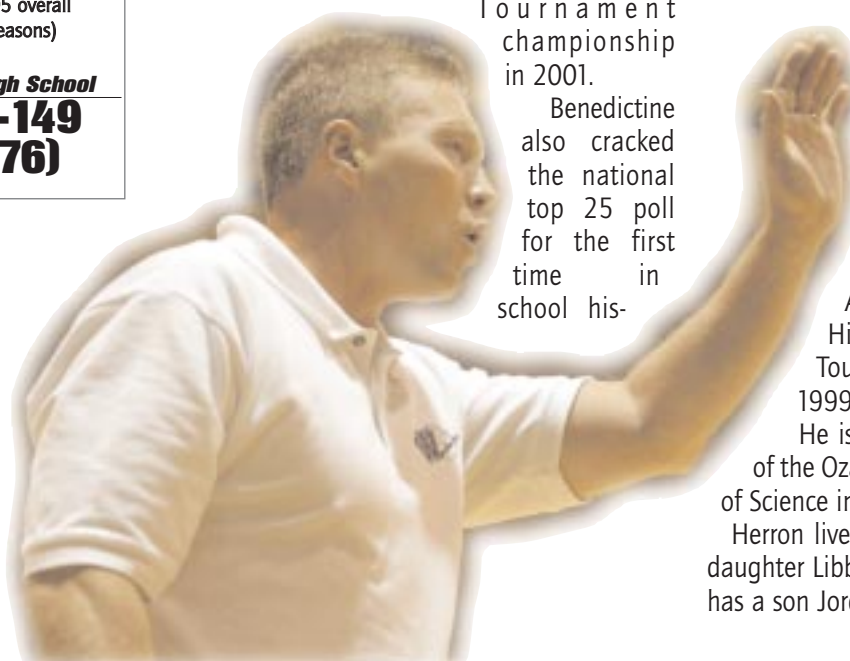
Herron spent 13 years prior to going to Benedictine as the head coach at Tonganoxie High School. During that time Herron's teams posted an overall record of 366-88. He began his coaching career at Golden City High School in Golden City, Mo., where he posted a 21-17 record in two seasons from 1984-85.

Two of his teams received the state's highest award of "Program of the Year" in 1989 and 1996 from the Kansas Volleyball Coaches Association. He also led four of his teams to the state tournament.

Herron also coached USAV juniors volleyball for 14 winters. His last two teams were Heart of America Region 18 Champions. His teams have made four National Tournament appearances, in 1993, 1999, 2000, 2001.

He is a 1980 graduate of the College of the Ozarks, where he earned a Bachelor's of Science in Physical Education.

Herron lives in Lawrence with his wife, Julie daughter Libby and son Thatcher Cole. He also has a son Jordan.



Herron vs All-Opponents

Record vs the MIAA

Central Missouri.	1-4
Emporia State	3-2
Missouri Southern	4-0
Missouri Western	4-0
Northwest Missouri	4-1
Pittsburg State.	2-2
Southwest Baptist	4-0
Truman State	1-3
Washburn*.	0-1

MIAA Overall. 23-13

*While at Benedictine College.

Other Opponents

Alabama-Huntsville.	1-0
Anderson	1-0
Arkansas Tech	2-0
Asbury	1-0
Avila.	4-0
Baker	6-3
Bellevue	0-1
Benedictine	1-0
Bethany	3-0
Bethel.	0-1
Central Methodist	3-0

Colorado Christian.	1-0	Midland Lutheran	1-0
Colorado Springs.	1-0	Missouri Baptist.	1-0
Columbia	0-1	Missouri Valley.	4-0
Concordia-St. Paul.	1-0	Mount Olive.	1-0
Christian Brothers	2-0	Nebraska-Omaha.	0-1
Culver Stockton	5-3	Newman	3-0
Dana	2-0	North Alabama	2-0
Doane.	0-1	Northwood.	1-0
Dordt	0-1	Ottawa.	5-0
Evangel	5-2	Park	3-0
Fort Hays State	1-1	Robert Morris.	1-0
Friends	4-0	Rockhurst.	1-1
Francis Marion.	1-0	Rollins	1-0
Graceland	0-5	St. Gregory's.	0-1
Hannibal-LeGrange.	1-0	St. Mary	2-0
Harding	1-1	St. Mary's (Texas).	1-0
Henderson State	1-0	Souix-Falls	1-0
Houston-Tillotsen.	1-0	Southern Colorado.	1-0
Illinois Institute of Tech.	0-1	Sterling.	3-0
Illinois-Springfield	1-0	Wartburg	1-0
Iowa Wesleyan.	1-0	Wayne State (Neb.)	1-0
John Brown	0-1	William Jewell	5-0
Kansas Wesleyan.	2-1	William Woods.	2-0
Lindenwood	5-1	Wingate	1-0
Mid-America Nazarene	6-2		

LADY BLUES ASSISTANT COACH TRENT JONES



Trent Jones begins his first season as assistant coach for the Washburn Lady Blues after spending the past two seasons as a volunteer assistant for the University of Kansas volleyball team.

He played collegiately at Columbia College and Graceland University as a defensive specialist.

At Columbia College, Jones was a member of the

2000 NAIA national championship team. He transferred to Graceland, where he played three seasons and graduated in 2002.

Jones is a native of Lee's Summit, Mo. and graduated from Archbishop O'Hara High School in 1998. He currently resides in Lawrence, Kan. and is engaged to Erica Hood.



2004 LADY BLUES ROSTER

No.	Name	Pos	HT	CL	Hometown/Previous School
1	Jami Sleichter	L/DS	5-7	JR	Carbondale, Kan./Kansas State
2	Wendy Kobbeman	L/DS	5-7	SR	Topeka, Kan./Arkansas Tech University
3	Monica Miesner	OH	5-11	FR	Florissant, Mo./Trinity Catholic HS
4	Ashley Ruzick	OH/RS	5-9	FR	Lenexa, Kan./St. Thomas Aquinas HS
5	Emily Foster	OH	5-7	SR	Meriden, Kan./Ottawa University
6	Julie Sackman	S	5-10	SO	Independence, Mo./Blue Springs HS
7	Erica Cowhick	L/DS	5-7	FR	Topeka, Kan./Shawnee Heights HS
8	Dani McHenry	OH	6-0	SR	Topeka, Kan./University of Kansas
9	Valerie Peterson	RS	5-9	SO	Manhattan, Kan./Riley County HS
13	Ashley Reider	OH	5-9	FR	Lansing, Kan./Lansing HS
15	Mandi Cox	MH	6-0	FR	Richmond, Kan./Central Heights HS
18	Anna Byers	MH	6-2	SO	Beattie, Kan./Marysville HS
20	Ashley Smith	S	5-9	SR	Maple Hill, Kan./St. Marys HS
22	Katie Brandt	MH	6-1	SR	Chicago, Ill./Resurrection HS

By Class

Seniors (5)

Katie Brandt
Emily Foster
Wendy Kobbeman
Dani McHenry
Ashley Smith

Juniors (1)

Jami Sleichter

Sophomores (3)

Anna Byers
Valerie Peterson
Julie Sackman

Freshman (5)

Erica Cowhick
Mandi Cox
Monica Miesner
Ashley Reider
Ashley Ruzick

By State

Kansas (12)

Beattie: Anna Byers
Carbondale: Jami Sleichter
Lansing: Ashley Reider
Lenexa: Ashley Ruzick
Manhattan: Valerie Peterson
Maple Hill: Ashley Smith
Meriden: Emily Foster
Richmond: Mandi Cox
Topeka: Erica Cowhick,
Wendy Kobbeman, Dani
McHenry

Missouri (1)

Florissant: Monica Miesner
Independence: Julie Sackman

Illinois (1)

Chicago: Katie Brandt

Alphabetical Roster

No.	Name	Pos	HT	CL
22	Katie Brandt	MH	6-1	SR
18	Anna Byers	MH	6-1	SO
7	Erica Cowhick	L/DS	5-7	FR
15	Mandi Cox	MH	6-0	FR
5	Emily Foster	OH	5-7	JR
2	Wendy Kobbeman	L/DS	5-7	JR
8	Dani McHenry	OH	6-0	JR
3	Monica Miesner	OH	5-11	FR
9	Valerie Peterson	OPP	5-9	FR
13	Ashley Reider	OH	5-9	FR
4	Ashley Ruzick	OH/RS	5-9	FR
6	Julie Sackman	S	5-11	FR
1	Jami Sleichter	L/DS	5-7	JR
20	Ashley Smith	S	5-9	JR



22 Katie Brandt

6-1 • Senior • Middle Hitter
Chicago, Ill./Resurrection HS

CAREER HIGHS

Kills: 16, vs. CMSU, 9-30-03
Attacks: 39, twice, last vs. CMSU, 9-30-03
Attack %: .786, vs. Alabama-Huntsville, 9-12-03
Digs: 13, vs Northwest Missouri, 9-12-01
Block Solos: 4, vs. Fort Hays State, 9-7-03
Block Assists: 8, twice, last at Neb.-Omaha, 9-5-03

At Washburn as a junior

Played in 99 games, before suffering a season-ending injury in October. Hit .289 with 233 kills and 90 blocks. Had a career-high 16 kills against Central Missouri State Sept. 30. Hit .786 with 11 kills and no errors in 14 attempts vs. Alabama-Huntsville Sept. 12.

At Washburn as a sophomore

Finished fifth on the team with 159 kills averaging 1.85 per game and second in blocks with 0.91 per game. Also averaged 1.02 digs per game.

At Washburn as a freshman

Played in 99 games, tallying 193 kills and 49 blocks. Tallied a career-high 15 kills vs. Wisconsin-Parkside at the Central Missouri State Tournament Sept. 7. Hit .474 with nine kills and no errors in 19 attempts against Fort Lewis Aug. 25.

Background

Was a member of the all-conference and all-region teams as captain of the volleyball team her senior year. Was chosen to play in the Second Annual Pepsi Cola/Adidas Illinois' Girls High School All-Star Tournament. Played in the Junior Olympic National Championships after her junior season in June of 2000.

Personal

Born March 1, 1983. Daughter of Janice and Terry Majich and Steven Brandt. Major is physical education.



Brandt's Stats at Washburn

	G	K	KPG	E	TA	Pct	A	APG	SA	SE	SAPG	RE	DIG	DPG	BS	BA	Total	BPG	BE	BHE
2001	99	193	1.95	92	603	.167	13	0.13	13	15	0.13	24	119	1.20	8	41	49	0.49	8	6
2002	86	159	1.85	65	406	.232	3	0.03	16	17	0.19	4	42	0.49	17	61	78	0.91	4	2
2003	99	233	2.35	71	560	.289	11	0.11	23	38	0.23	2	57	0.58	27	63	90	0.91	6	3
Totals	284	585	2.06	228	1569	.228	27	0.10	52	70	0.18	30	218	0.77	52	165	217	0.76	18	11



5 Emily Foster

5-7 • Senior • Outside Hitter

Meriden, Kan./Ottawa University

CAREER HIGHS

Kills: 18, at Missouri Western, 9-17-03
Attacks: 49, at Missouri Western, 9-17-03
Attack %: .538, vs. Kansas Wesleyan, 9-3-03
Digs: 22, vs. Harding, 9-13-03
Block Solos: 1, several times
Block Assists: 3, at Missouri Western, 9-17-03
Service Aces: 4, at Newman, 9-9-03

At Washburn as a junior

Played in 107 games, tallying 221 kills, 293 digs and 27 service aces after transferring from Ottawa. Had a career-high 18 kills at Missouri Western Sept. 17. Hit .359 with 16 kills in 39 attempts against Harding Sept. 13.

Background

Was named Freshman of the Year in the KCAC at Ottawa University and was named Player of the Year and All-American as a sophomore. Also an all-region and all-conference pick both seasons for the Lady Braves and a presidential scholar. At Jefferson West High School, a second team all-state pick and a two-time all-state honorable mention pick. Named all-conference three times.

Personal

Born March 29, 1983. Daughter of Agnes Smith and Peter Foster. Majoring in Integrated Studies. Her sister Amanda Smith lettered at Emporia State during the 1994 and 1995 seasons.



Foster's Stats at Washburn

	G	K	KPG	E	TA	Pct	A	APG	SA	SE	SAPG	RE	DIG	DPG	BS	BA	Total	BPG	BE	BHE
2003	107	221	2.07	102	722	.165	24	0.22	27	20	0.25	16	293	2.74	4	26	30	0.28	2	5
Totals	107	221	2.07	102	722	.165	24	0.22	27	20	0.25	16	293	2.74	4	26	30	0.28	2	5



2 Wendy Kobbeman

5-7 • Senior • Libero/Defensive Specialist
Topeka, Kan./Arkansas Tech

CAREER HIGHS

Kills: 3, (4 times), last vs. Christian Brothers, 9-6-03
Attacks: 12, vs. Anderson, 8-31-02
Attack %: .400, vs. PSU, 9-27-02
Digs: 18, vs. Southern Colorado, 9-6-02
Block Solos: n/a
Service Aces: 5, vs. Colorado-Colorado Springs, 9-6-02

At Washburn as a junior

Played in 128 games, tallying 262 digs and 16 service aces primarily as a defensive specialist. Had a season-high 17 digs at Pittsburg State Sept. 27. Reached double figures in digs eight times.

At Washburn as a sophomore

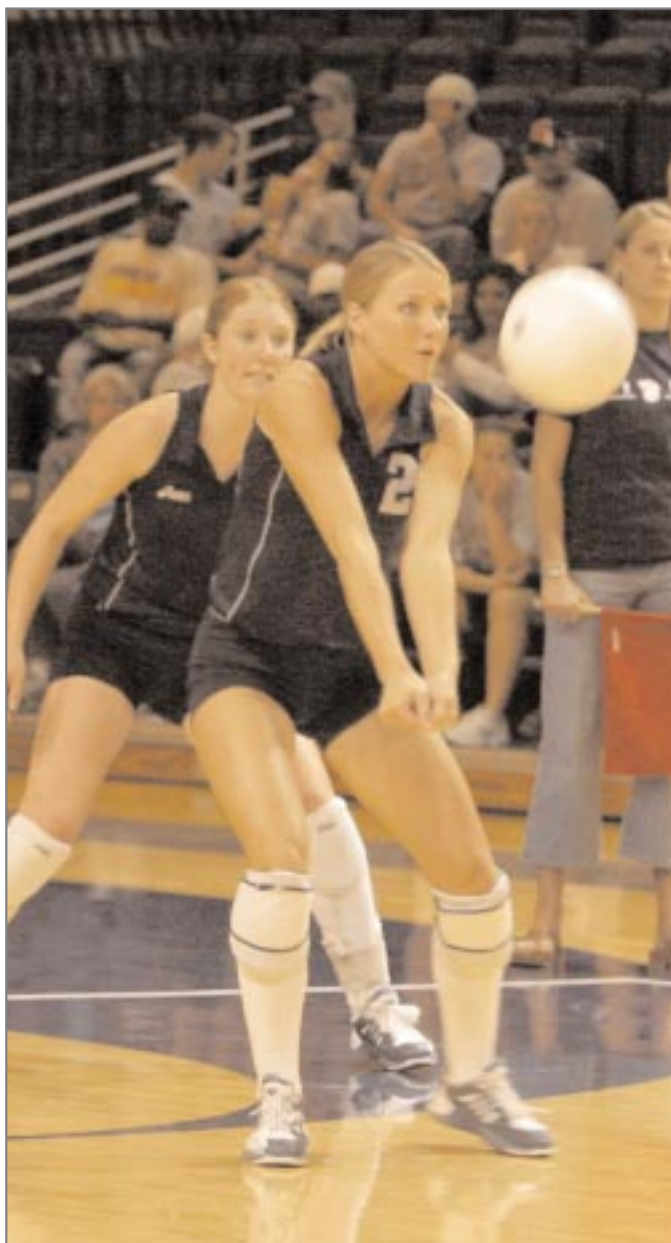
Played in a team-high 121 games with 15 kills and 39 aces. Finished second on the team with 344 digs averaging 2.84 per game. Recorded a career-high 18 digs against Southern Colorado.

Background

A sophomore transfer from Arkansas Tech University, where she collected 246 digs and 25 service aces in 31 matches. She is a 2001 graduate of Shawnee Heights High School, where she earned all-city and Class 5A All-State honors her junior and senior seasons, helping the T-Birds to two 5A state championships.

Personal

Born Jan. 21, 1983. Daughter of Bob and Pam Kobbeman. Majoring in elementary education.



Kobbeman's Stats at Washburn

	G	K	KPG	E	TA	Pct	A	APG	SA	SE	SAPG	RE	DIG	DPG	BS	BA	Total	BPG	BE	BHE
2002	121	15	0.12	14	79	.013	13	0.11	39	30	0.32	16	344	2.84	0	1	1	0.01	0	2
2003	128	10	0.08	13	64	-.047	18	0.14	16	26	0.12	13	262	2.05	0	1	1	0.01	1	4
Totals	249	25	0.10	27	143	-.014	31	0.12	55	56	0.22	29	606	2.43	0	2	2	0.01	1	6



8 Dani McHenry

6-0 • Senior • Outside Hitter
Topeka, Kan./Univ. of Kansas

CAREER HIGHS

Kills: 27, at Rockhurst, 11-8-03
Attacks: 63, at Emporia State, 11-11-03
Attack %: .667, vs. Northwest Missouri State, 9-19-03
Digs: 31, vs. Truman State, 9-20-02
Block Solos: 3, at Missouri Western, 10-29-02
Block Assists: 7, vs. North Alabama, 9-13-03
Service Aces: 6, vs. North Alabama, 10-12-02

At Washburn as a junior

Became the first Washburn player to be named to the AVCA All-American team, earning honorable mention honors and first team All-MIAA and All-South Central Region honors. Her .340 hitting percentage and 4.26 kills per game average were single season Washburn records and her 558 kills were second most in school history. Hit .543 with a career-high 27 kills in 46 attempts against Rockhurst Nov. 8.

At Washburn as a sophomore

Was a first team all-MIAA and all-region selection after leading the Lady Blues with 399 kills and finishing second with 452 digs. She was also fifth in the MIAA in service aces with 50 and seventh in digs. Averaged 2.8 points and 2.2 rebounds per game in 33 appearance for the Lady Blues' basketball team.

Background

A sophomore transfer from Kansas, where she had 226 kills, 211 digs and 25 total blocks. Was named the 2000 Kansas Sports Magazine Volleyball Player of the Year after her junior and senior seasons. She also earned Gatorade Player of the Year, Class 5A and Centennial League Player of the Year her senior season. McHenry was also a four-time All-Centennial League, all-city and All-Class 5A pick for the T-Birds, who captured 5A



State titles her junior and senior seasons.

Personal

Born Oct. 26, 1982. Daughter of Ron and Mischa McHenry. Majoring in business. Ron is the Washburn women's basketball coach.

McHenry's Stats at Washburn

	G	K	KPG	E	TA	Pct	A	APG	SA	SE	SAPG	RE	DIG	DPG	BS	BA	Total	BPG	BE	BHE
2002	118	399	3.38	151	1103	.225	22	0.19	50	20	0.42	30	452	3.83	15	62	77	0.65	7	6
2003	131	558	4.26	140	1230	.340	80	0.61	28	31	0.21	25	435	3.32	17	70	87	0.66	4	5
Totals	249	957	3.84	291	2333	.285	102	0.41	78	51	0.31	55	887	3.56	32	132	164	0.66	11	11



9 Valerie Peterson

5-9 • Sophomore • Right Side
Manhattan, Kan./Riley County HS

CAREER HIGHS

Kills: 8, vs. Emporia State, 10-4-03
Attacks: 21, at Missouri Southern, 10-22-03
Attack %: .727, vs. Emporia State, 10-4-03
Digs: 13, at Northwest Missouri, 10-17-03
Block Solos: n/a
Block Assists: 2, vs. Wayne State, 10-10-03
Service Aces: 1, twice

At Washburn as a freshman

Played in 47 games, tallying 41 kills and 56 digs in her first season as a Lady Blue. Had a career-high eight kills in 11 attempts without an error to hit .727 against Emporia State Oct. 4. Had a career-high 13 digs at Northwest Missouri State Oct. 17.

Background

She earned first team All-Mid East League honors all four years at Riley County and was named team MVP her junior and senior seasons. She had 197 kills, 167 blocks and 361 digs as a senior. Played in Northeast Kansas All-Star volleyball game and co-Valedictorian and Wendy's Heisman state volleyball finalist.

Personal

Born on Feb. 28, 1985. Daughter of Dennis and Donise Peterson. Majoring in exercise physiology.



Peterson's Stats at Washburn

	G	K	KPG	E	TA	Pct	A	APG	SA	SE	SAPG	RE	DIG	DPG	BS	BA	Total	BPG	BE	BHE
2003	47	41	0.87	31	137	.073	20	0.43	2	5	0.04	1	56	1.19	0	10	10	0.21	2	2
Totals	47	41	0.87	31	137	.073	20	0.43	2	5	0.04	1	56	1.19	0	10	10	0.21	2	2



6 Julie Sackman

5-10 • Sophomore • Setter

Independence, Mo./Blue Springs HS

CAREER HIGHS

Kills: 12, vs. Missouri Southern, 9-24-03
Attacks: 25, vs. Pittsburg State, 10-25-03
Attack %: .688, vs. Missouri Southern, 9-24-03
Digs: 16, vs. Pittsburg State, 10-25-03
Block Solos: 2, vs. Fort Hays State, 10-7-03
Block Assists: 6, at Nebraska-Omaha, 9-5-03
Service Aces: 3, twice, last vs. FHSU, 10-7-03

At Washburn as a freshman

Played in 128 games, tallying 166 kills, 204 digs and 1120 assists as the starting setter. Hit .272 and also had 33 service aces. Dished out a career-high 58 assists at Rockhurst Nov. 8. Had a career-high 12 kills and hit .688 against Missouri Southern Sept. 24.

Background

Was named first team all-conference and first team all-district her last three seasons at Blue Springs High. She was also a first team all-area, second team all-metro and first team Class 4A Missouri All-State her junior and senior seasons, while leading the Wildcats a district and regional championships and a third place finish at state. As a senior Sackman helped the Wildcats to conference and district championships. Named team's MVP as junior and senior and Who's Who Among High School and Sports and a four-year member of the honor roll.

Personal

Born April 27, 1985. Daughter of Doug and Vicky Sackman. Undecided on major.



Sackman's Stats at Washburn

	G	K	KPG	E	TA	Pct	A	APG	SA	SE	SAPG	RE	DIG	DPG	BS	BA	Total	BPG	BE	BHE
2003	128	166	1.30	50	426	.272	1120	8.75	33	22	0.26	0	204	1.59	11	50	61	0.48	11	41
Totals	128	166	1.30	50	426	.272	1120	8.75	33	22	0.26	0	204	1.59	11	50	61	0.48	11	41



20 Ashley Smith

5-9 • Senior • Setter

Maple Hill, Kan./St Marys HS

CAREER HIGHS

Kills: 2, at Emporia State, 11-11-03
Attacks: 4, at Emporia State, 11-11-03
Attack %: n/a
Digs: 13, vs. Emporia State, 10-17-01
Block Solos: n/a
Block Assists: 1, at Emporia State, 11-11-03
Service Aces: 4, vs. MidAmerica Nazarene, 11-3-03

At Washburn as a junior

Played in 24 games, tallying 22 digs as a defensive specialist. Also had four kills and four service aces, which all came against MidAmerica Nazarene Nov. 3. Has moved into the backup setter role this season.

At Washburn as a sophomore

Played in 45 games recording three kills and 24 digs with four aces.

At Washburn as a freshman

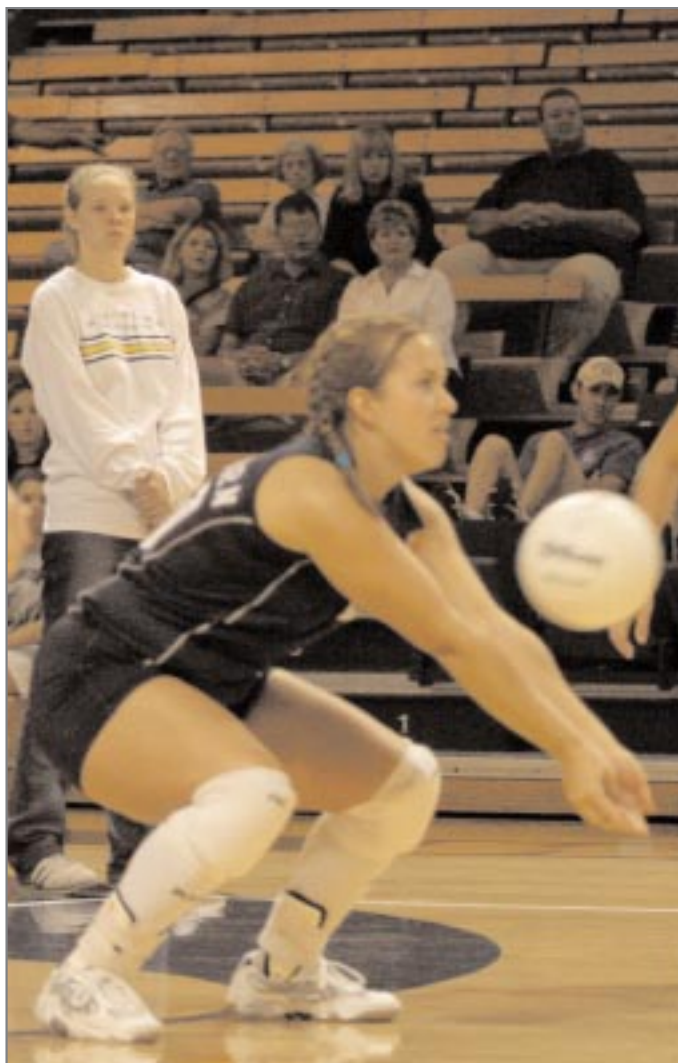
Played in 76 games, tallying 128 digs and serving 17 aces.

Background

Was a a four-time all-league selection at St. Marys, earning all-state honors for the 3A state champion Bears her junior year. Was a part of St. Marys triple crown for women's athletics which included a title in volleyball, basketball and softball her junior year. Was a first-team all-league pick her junior year at St. Marys and was an all-league pick in softball her junior and senior seasons.

Personal

Born Sept. 5, 1982. Daughter of Gary and Donna Smith. Sister of former Washburn outfielder Dylan Smith. Majoring in computer graphic design.



Smith's Stats at Washburn

	G	K	KPG	E	TA	Pct	A	APG	SA	SE	SAPG	RE	DIG	DPG	BS	BA	Total	BPG	BE	BHE
2001	76	3	0.04	7	23	-.174	2	0.03	17	17	0.22	31	128	1.68	0	0	0	0.00	0	1
2002	45	3	0.07	0	11	.273	3	0.07	4	5	0.09	4	24	0.53	0	0	0	0.00	0	1
2003	24	4	0.17	0	13	.308	3	0.12	4	4	0.17	2	22	0.92	0	1	1	0.04	0	1
Totals	145	10	0.07	7	47	.064	8	0.06	25	26	0.17	37	174	1.20	0	1	1	0.01	0	3



18 Anna Byers

6-1 • Sophomore • Middle Hitter
Beattie, Kan./Marysville HS

Background

A transfer from Pittsburg State that sat out last season at Washburn due to transfer rules. She is a 2002 graduate of Marysville High, where she led the North Central Kansas League with 7.33 kills per game to earn unanimous all-league honors her senior year.

Personal

Born April 2, 1984. Daughter of David and Kate Byers. Undecided on major. Her brother David played basketball at Washburn and younger brother Paul is a freshman for the Ichabod basketball team.



7 Erica Cowhick

5-7 • Freshman • Libero/Def. Specialist
Topeka, Kan./Shawnee Heights HS

Background

A Class 5A all-state selection at Shawnee Heights her last two seasons, helping the team to a runner-up finish in the state tournament in 2003. Was named KVA 5A Player of the Year as a senior. She also earned all-league and all-city honors each of the last two seasons. Cowhick also played pitcher

and first base on the Shawnee Heights softball team, earning all-city and all-league honors in the spring of 2003.

Personal

Born June 3, 1986. Daughter of Kent and Missy Cowhick. Majoring in elementary education.



15 Mandi Cox

6-0 • Freshman • Middle Hitter
Richmond, Kan./Central Heights HS

Background

A three time all-area and all-league selection at Central Heights and earned Pomona All-Tournament honors this season. She also played basketball and earned all-area and all-league honors. She also place third in the state in the high jump for Central Heights' track team.

Personal

Born April 28, 1986. Daughter of Tom and Clara Cox. Majoring in business.



3 Monica Miesner

5-11 • Freshman • Outside Hitter
Florissant, Mo./Trinity Catholic HS

Background

A 2003 graduate of Trinity Catholic High School, where she earned first team all-conference, all-district and all-region honors her junior and senior seasons. Was named to the St. Louis All-Metro second team and named the conference Player of the Year her senior season.

Personal

Born July 28, 1985. Daughter of Paul and Sandra Miesner. Undecided on major.



13 Ashley Reider

5-9 • Freshman • Outside Hitter
Lansing, Kan./Lansing HS

Background

A graduate of Lansing High School, where she earned all-league honors the past two seasons and was an all-state selection as a junior. Was named to the Sabetha All-Tournament team as a senior and to the Louisburg all-tournament team as a junior.

Personal

Born March 13, 1986. Daughter of Bruce and Janet Reider. Majoring in physical therapy.



4 Ashley Ruzick

5-9 • Freshman • Outside Hitter
Lenexa, Kan./St. Thomas Aquinas HS

Background

Was named team MVP at St. Thomas Aquinas, earning All-Eastern Kansas League honors and All-Sun honorable mention honors. Helped Aquinas to three sub-state titles the last three seasons and a state title in 2001.

Personal

Born February 7, 1986. Daughter of Valentine and Sheila Ruzick. Major is undecided.



1 Jami Sleichter

5-7 • Junior • Libero/DS

Carbondale, Kan./Kansas State Univ.

Background

A transfer from Kansas State, where she played two seasons and made five starts as a freshman. Was an all-league and all-state selection two seasons at Santa Fe Trail High School. She was also named to the state all-tournament team as a junior. Was an honorable mention all-state selection in basketball

and three-time all-state selection in softball.

Personal

Born July 13, 1982. Daughter of Rex and Sandy Sleichter. Majoring in nursing.

Lady Blues All-Time Roster (1990-present)

A

Jennifer Ackerman . . . 2000-01
Penny Adams 1991

B

Alecia Barron . 2002-2003
Olivia Belnay . . . 1993-96
Amy Benbrook . . 1997-98
Rachel Bentley . . 2000-01
Amy Biggs 1994
Callie Bjelland 2002-2003
Jen Black 1993
Katie Bowe 1998-99
Katie Brandt . . . 2001-pr.
Marissa Braness . . . 2001
Eileen Brungardt. 1992-95
Laura Burba 1990-91
Anna Byers 2004-pr.

C

Arica Chaffee . 1999-2000
Aimee Chester 1997
Mandy Chester . . 1993-96
Anna Cianciarulo 1995-98
Kandice Connell . 2002-03
Erica Cowhick . . 2004-pr.
Mandi Cox. . . . 2004-pr.
Susan Crooks . 2000-2003

D

Jennifer Domzalski 1998-2000
Amanda Dunbar . . . 1998

F

Emily Foster. . . . 2003-pr.
Amanda Flick 1993

G

Jill Gassen . . . 1998-2001

H

Becky Hanish . 1997-2000
Shawna Haslett. . 1988-90
Becci Havlicek. 1998-2001
Megan Houk . 2002-2003

J

Jammie James. . . 1996-97
Kelley Jordan . . . 1992-95

K

Shera Karasiak 1999-2000
Lindsey Kersting . 1999-02
Carla Knight . . . 1996-99
Wendy Kobbeman. . 2002-pr.
Katie Ksiazek . 2000-2001

L

Beth Lenherr . . 1999-2001

M

Kasandra Martell . . 2001
Debbie McCormick . 1992-95
Mandy McGinley. 1991-94
Dani McHenry. . . 2002-pr.
Monica Miesner. 2004-pr.
Ashley Millette 2003

Kathryn Mueller . . . 2001
Sandi Mullikin. 1998-2001

N

Nicole Nantz 1999
Erika Nelson 1990-92
Anna Neufeld. 2002-2003

O

Jonni Oestreich . . 1988-91
Kris Olson 1991

P

Starr Patterson 1994
Kate Peterson. 2003
Valerie Peterson 2003-pr.
Amanda Purdon . . . 1998

R

Kristen Rader . . . 1990-91
Ashley Reider. . . 2004-pr.
Erin Rhodes 1991-93
Caroline Rhoton . . . 1993
Tracy Robinson . . 1988-90
Rhonda Ronnebaum 1999-02
Caroline Rhoton . . . 1993
Tracy Robinson . . 1988-91
Jamie Ruff 1997-99
Robin Rusink . . . 1994-97
Ashley Ruzick . . 2004-pr.

S

Julie Sackman . . 2003-pr.
Angie Simon 1991-94

Shanna Sisson 2001
Jami Sleichter . . 2004-pr.
Ashley Smith . . . 2001-pr.
Kerri Spielman . . 1990-92
Kristen Stallard 1995
Heidi Stutterheim 1989-90

T

Kate Thomsen . . . 1996-97
Kari Tomlin 1997
Stacy Wheeler 1991

V

Tricia Voth 1992-95

W

Susan Waller . . 1988-1990
Crystal Walker 2000
Ann Weygint . 2002-2003
Stacy Wheeler . . 1988-90
Ginger Winter . . . 1992-95
Kristy Wolfe 1994-97

Z

Melissa Zlatnik . . 1995-98