

***Head coach Ron McHenry and
assistant coach Dustin Odum
look to lead Washburn to a
third straight MIAA title***



COACHING STAFF



Head Coach Ron McHenry



Ron McHenry
Head Coach

Washburn Record

92-30 (.754)

Overall Record

92-30 (.754)

Yearly Results

2000-01	13-14
2001-02	23-7
2002-03	30-4
2003-04	26-5

Since his appointment as head coach prior to the 2000-01 season, Ron McHenry has quickly returned the Washburn women's basketball program to national prominence.

The Lady Blues broke the 20-win barrier for the third straight season in 2003-04 by posting a 26-5 record and winning a second straight MIAA regular season crown. The Lady Blues also earned a berth to the NCAA Division II National Tournament for the third straight year.

In four seasons McHenry has posted a 92-30 (.754) record overall and 51-21 (.708) record in the MIAA. He is 79-16 the last three seasons.

In only his third season in 2002-03, McHenry guided the Lady Blues to a regular season MIAA title, a Sonic/MIAA Tournament championship and a berth to the Division II Elite Eight.

The Lady Blues tied for second most wins in team history at 30-4 and went to the Elite Eight for the third time in team history.

In his second season McHenry engineered one of the best turnarounds in Division II, guiding Washburn to the South Central Regional and finishing with a 23-7 record.

He guided the Lady Blues to back-to-back 20 win seasons after finishing with a 13-14 record in 2000-01, which was also his first season as a head coach at the collegiate level.

McHenry was named the head coach on May 8, 2000.

He became only the fifth coach in the history of the women's basketball program at Washburn and the first new head coach since Patty Dick joined the Lady Blues as the head coach in the 1977-78 season.

Prior to his new appointment, McHenry spent the previous 11 seasons as a member of the men's basketball coaching staff under current coach Bob Chipman. While on the Washburn bench, he was a part of 243 wins. In addition to his basketball duties, McHenry was the men's golf coach for eight seasons.

McHenry has had a diverse coaching career. He began his career as a graduate assistant to Chipman during the 1984-85 season. He then



went on to Perry High School in 1986 where he served as assistant boys coach.

McHenry quickly moved up the coaching ranks in 1988 when he assumed an assistant's position with the Topeka Sizzlers of the Continental Basketball Association. McHenry eventually became the Sizzlers' interim head coach before joining the Washburn staff for the 1989-90 campaign. During his first year on the Washburn staff, McHenry was the department's academic advisor.

McHenry played for Washburn after stints at Coffeyville Community College and the University of Kansas. He started for the Ichabods during the 1983-84 season.

He graduated from Washburn with a bachelor's degree in communications and went on to earn a master's degree in sports administration from Wichita State University in 1987.

McHenry and his wife, Mischa, have three children, Danielle, Samantha and Ronnie.

BACK-TO-BACK MIAA CHAMPIONSHIPS



MCHENRY'S CAREER RECORD VS. MIAA SCHOOLS

Central Missouri State University	6-2
Emporia (Kan.) State University	6-4
Missouri Southern State College	6-2
Missouri Western State College	4-7
Missouri, University of, Rolla	8-0
Northwest Missouri State University	8-3
Pittsburg State (Kan.) University	7-2
Southwest Baptist (Mo.) University	7-2
Truman (Mo.) State University	7-2

TOTALS **59-24**

OTHER SCHOOLS

Angelo State	1-0
Arkansas-Monticello	1-0
Avila	1-0
Baker	3-0
Bemidji State	1-0
Benedictine	3-0
Bethany	1-0
Cameron	2-0

Drury	3-1
Evangel	1-0
Florida Southern	1-0
Fort Hays State	1-0
Hillsdale	0-1
Lynn	1-0
MidAmerica Nazarene	1-0
Midwestern State	1-0
Millersville	1-0
Missouri-St. Louis	0-2
Nebraska-Kearney	1-0
Northern Kentucky	0-1
Rockhurst	2-0
Southeastern Oklahoma State	1-1
Southwestern	1-0
Southwestern Oklahoma State	1-0
St. Mary	2-0
Texas A&M-Kingsville	1-0
William Jewell	1-0

TOTALS **33-5**

Dustin Odum enters his third season as an assistant coach for the Lady Blues, after serving one season as the head girls coach Wamego High School in 2001-02.

Odum was elevated to the top assistant post in June of 2003 and is in charge of scheduling, conditioning and video operations. He is also handles summer camps and leagues and assists with recruiting and on-court coaching for the Lady Blues

Before coaching at Wamego, Odum was a graduate assistant at Emporia State University for two seasons, where helped Emporia State to two MIAA titles and an Elite Eight. He coached two Kodak All-Americans for the Hornets.

He was also an assistant coach at Northern Heights in Allen, Kan., where he helped guide the Wildcats to a third place finish at the 1999 3A state championship at Hutchinson. He coached at Northern Heights for three seasons.

He got his first experience in coaching at Nemaha Valley High School, where he served



Dustin Odum
Third Season

as head freshman coach for one season in 1995-96.

Odum earned a bachelor's of science in education at Emporia State in 1999. He is a native of Seneca, Kan., where he graduated from Nemaha Valley High in 1994.



Montoya Whitfield
First Season

Montoya Whitfield is in her first season as a student assistant for the Lady Blues after playing one season in 2003-04.

Whitfield averaged 8.2 points and 4.4 rebounds off the bench for the Lady Blues and was fifth in the MIAA with 37 blocked shots.

She recorded her only double-double with 16 points and 10 rebounds against Baker Nov. 29 and had a career-high 20 points against Central Missouri State Jan. 3.

Whitfield transferred to Washburn from Paris Junior College, where she averaged 8.8 points and 5.9 rebounds a game.

She is a Long Beach, California native, where she attended Long Beach Poly High and was team MVP and a Top 100 Senior in California. She is majoring in psychology.



Alex Jeannin
First Season

Alex Jeannin is in her first season as a student assistant for the Lady Blues

She is a 2004 graduate of Basehor-Linwood High School, where she was a first team all-league selection two seasons and an honorable mention all-league selection one season.

Jeannin holds the career record for assists for the Bobcats. She also played volleyball and participated on the track team at Basehor-

Linwood.

Jeannin was valedictorian of her class at Basehor-Linwood and was a Kansas Honor Scholar.

She is a Baseor, Kan. native and is majoring in mathematics education.



Thorlan Buchanan
First Season

Thorlan Buchanan is in her first season as a student assistant for the Lady Blues after playing for the Lady Blues in 2000-01.

Buchanan played in 18 games, making 13 starts for the Lady Blues. She averaged 7.8 points, 3.6 assists and 2.2 rebounds a game.

She came to Washburn from New Mexico Junior College, where she was the team leader in assists and earned all-conference honors.

She is a 1994 graduate of Westinghouse

Vocational School in Chicago, Ill., where she was named to the all-conference and all-state teams.

Buchanan is a native of Chicago, Ill. and is majoring in mass media.



After finishing with a 26-5 record with a regular season MIAA title and third straight NCAA Tournament appearance, the Washburn Lady Blues will play a new role this season as favorites to win the MIAA.

The Lady Blues return all five starters and 10 players that saw significant playing time from last season's team, including three All-MIAA selections.

The Lady Blues have all the pieces in place with a balanced scoring attack returning five players averaging from 10.8 to 7.3 points a game last season.

Mix in a trio of talented newcomers and the Lady Blues hope to have the recipe for another successful campaign that ends with a run at conference, regional and even national crowns. The Lady Blues have gained national respect and open the season No. 9 in the WBCA Divison II National Poll.

Returners

Washburn returns 11 players from last season's conference championship team, including all five starters.

In the post the Lady Blues are solid with senior Carla Sintra and sophomore Brooke Ubelaker slated to start again this season.

Sintra, who led the team with 10.8 points and 6.0 rebounds a game, showed flashes of brilliance and hopes to be even more comfortable in her second season at Washburn.

Ubelaker was one of the state of Kansas all-time leading scorers in high school before continuing that success in the collegiate game last season. She turned up her game in the postseason and became a deadly scoring threat from inside and outside at the four spot.

A trio of returning guards are back with lengthy experience in the program. Seniors Lora Westling and Alison Garrett are in their fourth season, while April Roadhouse will be in her third season.

Westling is climbing the career scoring charts and has started since late in her sophomore season. She has the ability to score off the dribble and from outside and is a tough rebounder and defender.

Garrett, who is closing in on the school's record for 3-pointers, is a proven outside threat and a good ball handler and passer. She made 42 3-pointers each of the last two seasons.

Roadhouse, who was an All-MIAA Defensive team selection last season, led the MIAA with a 2.40 assist to turnover ratio and started all 31 games as a sophomore.

Also returning to the fold are guards Juwana Rivers, Erin Menard, Cindy Keeley and Holly Henrichs.

Rivers was named the team's Most Valuable Player despite coming off the bench and really thrived down the stretch of the season to earn honors such as All-South Central Region Tournament team.

Menard broke several school records with her dead aim from beyond the arch. She set a record with 10 3-pointers against Truman State Jan. 17 and hit a school record 62 3-pointers for the season.

Keeley and Henrichs also added depth to the rotation. Keeley averaged 3.7 points and 2.5 rebounds a game and was one of Washburn's toughest defenders and rebounders.

Dani McHenry and Megan Sullivan are also back in the frontcourt for the Lady Blues.

McHenry, who was also a volleyball standout for Washburn, is a tough defender and averaged 3.6 rebounds a game.

Sullivan showed signs of greatness during her freshman season and is very versatile and athletic for her size at 6-1.

Newcomers

Washburn added three new players to the mix this season with guards Jennifer Harris and Stacey Becker, along with Stephanie Bouterse.

Harris was an All-American selection last season at Trinity Valley Junior College, where she helped her team to a 36-0 record and NJCAA National title.

Becker was an all-state high school selection at McPherson High before making stops at Wichita State and Kansas before coming to Washburn.

Bouterse played two seasons at Midland College and is the tallest Lady Blue at 6-2.

Outlook

Washburn was selected as the MIAA's top pick with 77 points and five first place votes, followed by rival Emporia State. The Hornets received three first place votes and were ranked No. 5 in the WBCA Poll.

Missouri Western, who is led by new head coach Josh Keister, is picked third and received one first place vote.

Central Missouri, coached by former Griffon coach Dave Slifer, is just three points back in fourth with one first place votes.

2003-04 MIAA Coaches Poll

1. Washburn (5)	77
2. Emporia State (3)	73
3. Missouri Western (1)	61
4. Central Missouri (1)	58
5. Missouri Southern	47
6. Southwest Baptist	38
7. Northwest Missouri (1)	37
8. Pittsburg State	27
9. Truman State	21
10. Missouri-Rolla	11

Parenthesis for number of first place votes



Numerical

3	Cindy Keeley*	G	5-9	SO	Great Bend, Kan./Great Bend High School
4	Stephanie Bouterse	C	6-2	JR	Paramaribo, Suriname/Midland Community College
5	Juwanna Rivers*	G	5-7	SR	Cleveland, Ohio/Tyler Junior College
10	Erin Menard*	G	5-7	JR	Burlington, Kan./Oral Roberts University
11	April Roadhouse*	G	5-7	JR	Osborne, Kan./Osborne High School
13	Jennifer Harris	G	5-10	JR	Morristown, N.J./Trinity Valley Community College
14	Stacey Becker	G	5-9	JR-RS	McPherson, Kan./University of Kansas
20	Holly Henrichs*	G	5-5	FR	Dodge City, Kan./Dodge City High School
25	Alison Garrett***	G	5-7	SR	Burlington, Kan./Burlington High School
32	Brooke Ubelaker	F	5-10	FR	Osborne, Kan./Osborne High School
42	Lora Westling***	G	5-10	SR	Casper, Wyoming/Natrona County High School
43	Dani McHenry**	F	6-0	JR	Topeka, Kan./Shawnee Heights High School
44	Megan Sullivan*	F	6-1	SO	Spring Hill, Kan./Spring Hill High School
45	Carla Sintra*	F	6-1	SR	Goiania, Brazil/South Plains College

Alphabetical

14	Stacey Becker	G	5-9	JR-RS	McPherson, Kan./University of Kansas
4	Stephanie Bouterse	C	6-2	JR	Paramaribo, Suriname/Midland Community College
25	Alison Garrett***	G	5-7	SR	Burlington, Kan./Burlington High School
13	Jennifer Harris	G	5-10	JR	Morristown, N.J./Trinity Valley Community College
20	Holly Henrichs*	G	5-5	FR	Dodge City, Kan./Dodge City High School
3	Cindy Keeley*	G	5-9	SO	Great Bend, Kan./Great Bend High School
43	Dani McHenry**	F	6-0	JR	Topeka, Kan./Shawnee Heights High School
10	Erin Menard*	G	5-7	JR	Burlington, Kan./Oral Roberts University
5	Juwanna Rivers*	G	5-7	SR	Cleveland, Ohio/Tyler Junior College
11	April Roadhouse*	G	5-7	JR	Osborne, Kan./Osborne High School
45	Carla Sintra*	F	6-1	SR	Goiania, Brazil/South Plains College
44	Megan Sullivan*	F	6-1	SO	Spring Hill, Kan./Spring Hill High School
32	Brooke Ubelaker	F	5-10	FR	Osborne, Kan./Osborne High School
42	Lora Westling***	G	5-10	SR	Casper, Wyoming/Natrona County High School

Head Coach: Ron McHenry (Washburn '84)

Washburn Coaching Record: 92-30 (.754) – Fifth season

Career Coaching Record: Same

Assistant Coach: Dustin Odum – Third season at Washburn

Student Assistant Coaches: Montoya Whitfield, Alex Jeannin, Thorlan Buchanan

Pronunciation Guide

4 Stephanie Bouterse
(Bow-Ta-Shuh)
32 Brooke Ubelaker
(You-ba-Lake-err)

By Height

5-5 Holly Henrichs
5-7 Alison Garrett
Erin Menard
Juwanna Rivers
April Roadhouse
5-9 Stacey Becker
Cindy Keeley
5-10 Jennifer Harris

Brooke Ubelaker
Lora Westling
6-0 Dani McHenry
6-1 Carla Sintra
Megan Sullivan
6-2 Stephanie Bouterse

By Class

Seniors (4)

Alison Garrett
Juwanna Rivers
Carla Sintra
Lora Westling

Juniors (6)

Stacey Becker

Sophomores (4)

Holly Henrichs
Cindy Keeley
Megan Sullivan
Brooke Ubelaker

Freshmen (0)

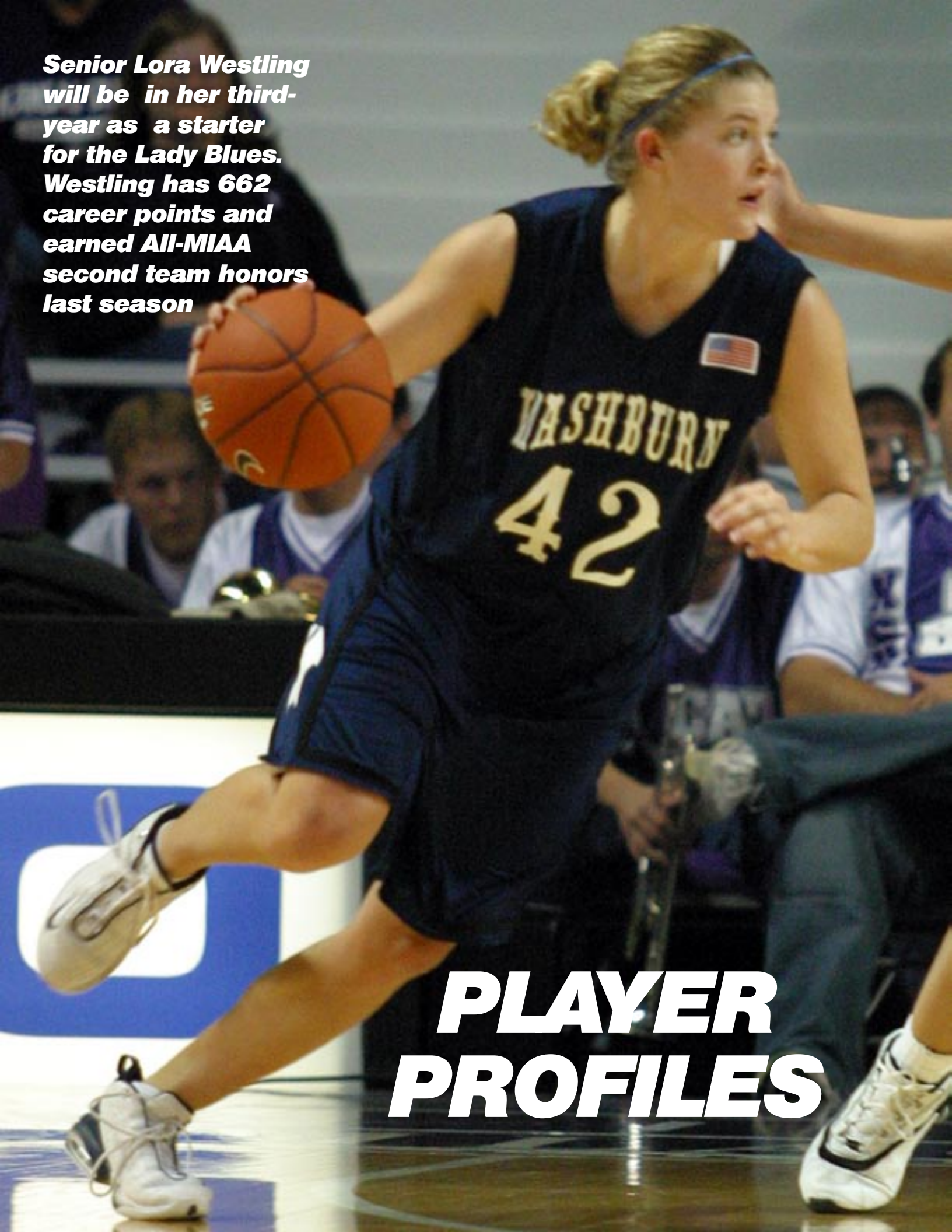
By State/Country

Kansas (9)

Stacey Becker (McPherson)
Alison Garrett (Burlington)
Holly Henrichs (Dodge City)
Cindy Keeley (Great Bend)
Dani McHenry (Topeka)
Erin Menard (Burlington)
April Roadhouse (Osborne)
Megan Sullivan (Spring Hill)
Brook Ubelaker (Osborne)
Ohio (1)
Juwanna Rivers (Cleveland)
New Jersey (1)
Jennifer Harris (Morristown)
Wyoming (1)

Lora Westling (Casper)
Suriname (1)
Stephanie Bouterse
(Paramaribo)
Brazil (1)
Carla Sintra (Goiania)

Senior Lora Westling will be in her third-year as a starter for the Lady Blues. Westling has 662 career points and earned All-MIAA second team honors last season



PLAYER PROFILES



25 ALISON GARRETT

5-7 • SENIOR • GUARD
BURLINGTON, KAN./BURLINGTON HIGH SCHOOL

CAREER HIGHS

POINTS: 18
2/12/03 vs. NWMSU
REBOUNDS: 5
2/6/03 at SBU
ASSISTS: 4
12/10/02 vs. Benedictine
STEALS: 2
four times
FG'S MADE: 7
2/12/03 vs. NWMSU
FT'S MADE: 3
2/14/04 at TSU

TIP INS

Favorites:
Food
Ice Cream
Movie
Old School
In the movie of my life, who would play me
Sandra Bullock
Sport other than basketball
Volleyball
Person In History I Want to Meet
Grandpa Isch
Favorite Sports Moment
Winning State HS Basketball
If I lived anywhere else in the world
Aspen, Colorado
Advice to youngsters
Liesten to your coaches

At Washburn: Returns to the Washburn backcourt for a fourth season. Is third all-time in 3-point field goals with 106 in her career, which is 16 shy of Kristy Chapman's Washburn career record.

As a junior in 2003-04:

Started all 31 games, averaging 5.6 points a game with 41 3-pointers. Had a season-high 12 points at Missouri-Rolla Jan. 10.

As a sophomore in 2002-03:

Played in 28 games, making seven starts for the Lady Blues before breaking shooting hand in regular season finale against Missouri Southern. Scored a career high 18 points by making 7 of 10 FG (4-for-5 3FG) against Northwest Missouri State on Feb.

12. Was second on the team with 41 3-point field goals.

As a freshman in 2001-02:

Played in all 30 games, providing a proven outside threat off the Lady Blue bench by averaging 3.6 points and 1.2 assists a game. Scored 10 points twice, including a 4-for-4 performance with two 3-pointers at Southwest Baptist Jan. 10. Made 24 of 52 3-pointers, which was just six away from Washburn's record for freshman. Earned MIAA Presidential Scholar Award for student athletes with 4.0 GPA.

Background

A 2001 graduate of Burlington High, where she earned all-area and all-league honors each of her four seasons. She was also an all-state selection two years for Burlington and was selected to the KBCA All-Star game. Alison posted a 4.0 GPA in high school and was named to the KBCA All-State Academic team.

Personal

Born August 22, 1983. Daughter of Terry and Lisa Garrett. Majoring in biology.



YEAR	GP-GS	MIN-AVG	FG	FGA	PCT	3FG	3FGA	PCT	FT	FTA	PCT	OFF	DEF	TOT	AVG	PF	FO	A	TO	BLK	ST	PTS	AVG
2001-02	30-0	338.11.3	40	77	.519	24	52	.462	5	9	.556	7	19	26	0.9	23	0	37	19	2	9	109	3.6
2002-03	28-7	440-15.7	62	151	.411	41	103	.398	2	2	1.000	2	26	28	1.0	28	0	21	22	0	12	167	6.0
2003-04	31-31	641-20.7	61	142	.430	41	94	.436	12	18	.667	11	29	40	1.3	40	0	38	28	4	22	175	5.6
TOTALS	89-31	1419-15.9	163	370	.441	106	249	.426	19	29	.655	20	74	94	1.1	91	0	96	69	6	43	451	5.1



20 HOLLY HENRICHS

5-5 • SOPHOMORE • GUARD

DODGE CITY, KAN./DODGE CITY HIGH SCHOOL

CAREER HIGHS

POINTS: 3

(2) last 2/21/04 vs. UMR

REBOUNDS: 2

1/17/04 vs. Truman

ASSISTS: 1

four times

STEALS: 1

(2) last 12/16/03 vs. Texas A&M-Kingsville

FG'S MADE: 1

three times

FT'S MADE: N/A

TIP INS

Favorites:

Food
Anything Mexican

Movie
Pretty Woman

Cartoon character
Scooby Doo

Other sport
Football

Advice to youngsters

You can do anything you set your mind to

In the movie of my life, who would play me

Sarah Michelle Gellar

If I won the lottery the first thing I would buy

A sportscar for my mom

At Washburn A reserve point guard that adds depth the the squad as a sophomore this season.

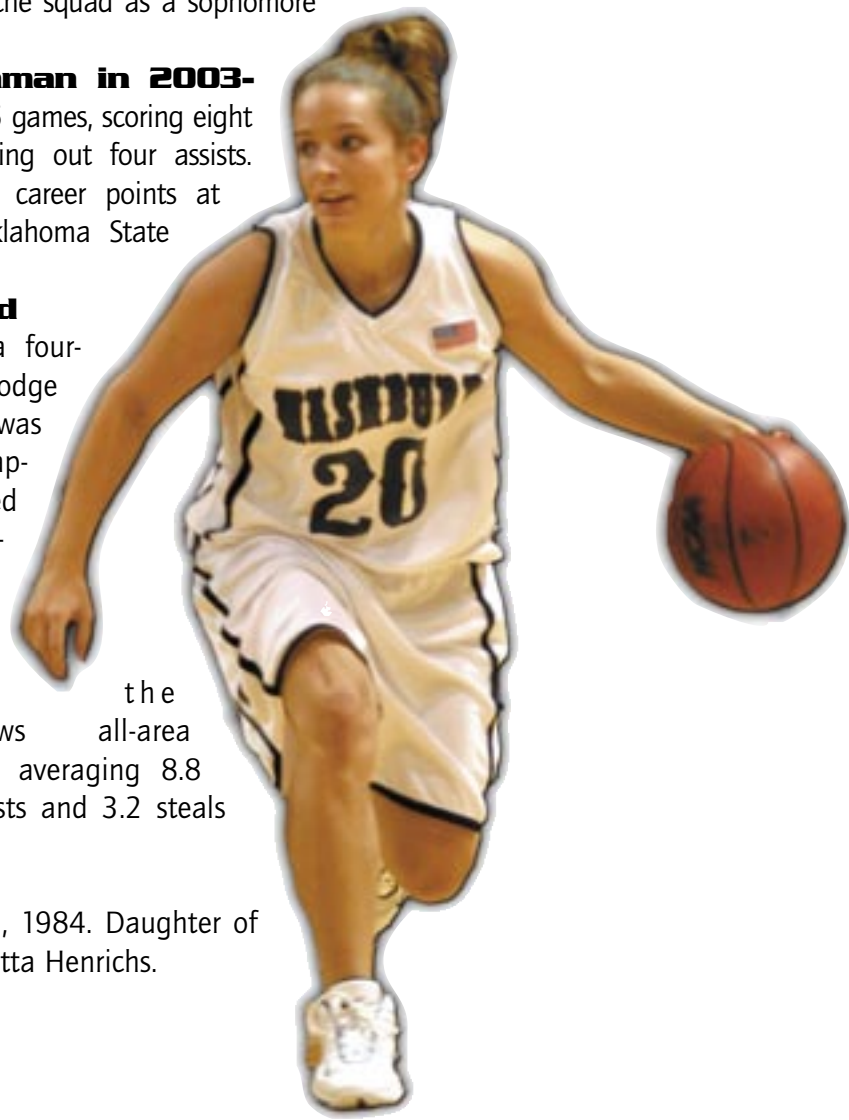
As a freshman in 2003-04 Played in 15 games, scoring eight points and dishing out four assists. Scored her first career points at Southeastern Oklahoma State Nov. 18.

Background

Henrichs was a four-year starter at Dodge City, where she was the team's co-captain and earned first team all-conference honors as a junior and senior. She was named to the Hutchinson News all-area Class 6A after averaging 8.8 points, 9.0 assists and 3.2 steals a game.

Personal

Born August 23, 1984. Daughter of Kelly and Ronnetta Henrichs.



YEAR	GP-GS	MIN-AVG	FG	FGA	PCT	3FG	3FGA	PCT	FT	FTA	PCT	OFF	DEF	TOT	AVG	PF	FO	A	TO	BLK	ST	PTS	AVG
2003-04	15-0	48-3.2	3	8	.375	2	5	.400	0	0	.000	1	3	4	0.3	6	0	4	5	1	2	8	0.5
TOTALS	95-48	1846-19.4	237	596	.398	82	258	.318	106	153	.693	114	212	326	3.4	160	1	205	141	32	88	662	7.0

THREE STRAIGHT NCAA TOURNAMENT APPEARANCES



3 CINDY KEELEY

5-9 • SOPHOMORE • GUARD
GREAT BEND, KAN./GREAT BEND HIGH SCHOOL

CAREER HIGHS

- POINTS: 10**
(2) last 2/21/04 vs. UMR
- REBOUNDS: 7**
(3) last 1-17-04 vs. TSU
- ASSISTS: 5**
12/11/03 vs. Avila
- STEALS: 4**
3/13/04 at Drury
- FG'S MADE: 3**
(2) last 2/11/04 vs. SBU
- FT'S MADE: 5**
2/21/04 vs. UMR

TIP INS

- Favorites:**
- Food**
Spaghetti
 - Book**
The Notebook
 - TV Show**
One Tree Hill
 - Movie**
Pirates of the Caribbean
 - Other sport**
Volleyball
 - Pro athlete**
Michael Jordan
 - Cartoon Character**
Scooby Doo
 - In the movie of my life, who would play me**
Julia Roberts
 - If I could live anywhere**
Hawaii
 - Person in history I'd like to meet**
Jesus
 - Advice to youngsters**
Never take anything for granted

At Washburn: Has shown the ability to score, pass, defend and rebound. Possesses great athleticism and strength at the three spot.

As a freshman in 2003-04: Played in all 31 games, averaging 3.7 points and 2.5 rebounds a game. Had career-high mark of 10 points against Benedictine Dec. 9 and Missouri-Rolla Feb. 21.

Background

Keeley is a 2003 graduate of Great Bend High School, where she earned second team honors on the Topeka Capital Journal all-state all-class team as a senior. She earned Class 5A all-state honors as a junior by averaging 21.5 points, 6.4 rebounds and 3.5 steals a game.

She owns the Great Bend record for game steals with 132. She also owns the school record for single game scoring with 40 points and single season scoring of 473 points. Keeley was

selection in volleyball and holds Great Bend's 300-meter hurdle record in track.

Personal

Born March 25, 1985. Daughter of Mike and Jan Keeley. Majoring in elementary education. Her father Mike played football and baseball four years at Washburn.



YEAR	GP-GS	MIN-AVG	FG	FGA	PCT	3FG	3FGA	PCT	FT	FTA	PCT	OFF	DEF	TOT	AVG	PF	FO	A	TO	BLK	ST	PTS	AVG
2003-04	31-0	453-14.6	41	93	.441	7	31	.226	25	36	.694	27	52	79	2.5	31	0	49	26	6	25	114	3.7
TOTALS	31-0	453-14.6	41	93	.441	7	31	.226	25	36	.694	27	52	79	2.5	31	0	49	26	6	25	114	3.7



43 DANI McHENRY

6-0 • JUNIOR • FORWARD
TOPKEKA, KAN./SHAWNEE HEIGHTS HIGH SCHOOL

CAREER HIGHS

POINTS: 12

12/10/02 vs.

Benedictine

REBOUNDS: 8

2/18/04 vs. NWMSU

ASSISTS: 4

(2) last 1/24/04 vs.

MSSU

STEALS: 2

2/20/02 at ESU

FG'S MADE: 4

1/10/02 at SBU

FT'S MADE: 6

11/25/03 at Rockhurst

At Washburn: Has been a key member off the Lady Blues bench the past two seasons. Will add depth to the Washburn frontcourt again as one of the team's top rebounders and post defenders.

As a sophomore in 2003-04: Played

in all 31 games, averaging 2.6 points and 3.6 rebounds a game. Scored six points for a season-high in five different games and had a career-high with eight rebounds against Northwest Missouri State Feb. 18. Made 26 of 32 free throws for an 81.3 percent clip.

As a freshman in 2002-03: Played in 33 games, averaging 2.8 points and 2.2 rebounds a game. Scored a career-high 12 points against Benedictine College on Dec. 12, making 5 of 5 field goals and two free throw attempts. Had a career-high with seven rebounds in the South Central Region championship against Drury on March 17.

Background

Named to the All-MIAA volleyball team for the third straight year in the fall for the

Lady Blues. Was Washburn's first AVCA All-American as a junior in 2003 in volleyball. She is a 2001 graduate of Shawnee Heights High School, where she earned first team Class 5A All-State honors and third team all-class all-state honors as a senior in 2000-01.

She also earned first team Class 5A All-State in 1999-2000 and third team all-state honors in 1998-99. The T-Birds finished third in the state in 2000. Was a four-year All-Centennial League pick and earned league MVP honors her senior season and Newcomer of the Year honors her freshman year. Was a two-time all-city first team selection.

She was also the Kansas Sports Magazine Volleyball Player of the Year after her junior and senior seasons. She also earned Gatorade Player of the Year honors and was also Class 5A and Centennial League Player of the Year her senior season. She helped the T-Birds capture 5A State volleyball titles her junior and senior seasons.

Personal

Born Oct. 26, 1982.

Daughter of Ron and Misha McHenry. Majoring in business.



TIP INS

Food

Chicken

TV Show

Real World

Movie

Oceans 11

Music

Kenny Chesney

If I owned one CD it would be

Jock Jams

Sport other than basketball

Volleyball/Golf

If I could live anywhere it would be

Chicago, Ill.

Sports Team

Lakers

Cartoon Character

Donald Duck

Advice to youngsters

Never give up

YEAR	GP-GS	MIN-AVG	FG	FGA	PCT	3FG	3FGA	PCT	FT	FTA	PCT	OFF	DEF	TOT	AVG	PF	FO	A	TO	BLK	ST	PTS	AVG
2002-03	33-0	444-13.5	27	73	.370	1	2	.500	39	55	.709	30	43	73	2.2	59	2	25	26	7	15	94	2.8
2003-04	31-0	514-16.6	25	66	.379	4	9	.444	26	32	.813	43	68	111	3.6	57	1	44	21	11	7	80	2.6
TOTALS	64-0	958-15.0	52	139	.374	5	11	.455	65	87	.747	73	111	184	2.9	116	3	69	47	18	22	174	2.7

THREE STRAIGHT NCAA TOURNAMENT APPEARANCES



10 ERIN MENARD

5-7 • JUNIOR • GUARD

BURLINGTON, KAN./ORAL ROBERTS UNIVERSITY

CAREER HIGHS
POINTS: 30

- 1/17/04 vs. Truman
- REBOUNDS: 4**
(2) last 12/11/03 vs. Avila
- ASSISTS: 3**
(2) last 12/11/03 vs. AU
- STEALS: 3**
(2) last 12/11/03 vs. AU
- FG'S MADE: 10**
1/17/04 vs. Truman
- FT'S MADE: 2**
Three Times

TIP INS

- Favorites:**
- Food**
Mom's spaghetti and meatballs
- TV Show**
Friends
- Movie**
Dazed and Confused
- Music Group**
Aerosmith
- Sports Announcer**
Stuart Scott
- Other sport**
Volleyball
- Advice to youngsters**
Play hard, have fun
- Top sports moment**
Winning state title her junior year
- If I could live anywhere it would be**
Australia
- Person I'd like to meet**
Dean Smith

At Washburn: A proven outside scorer that will provide depth in the Washburn backcourt again this season.

As a sophomore in 2003-04: Played in all 31 games, scoring 7.3 points a game. Set the single season Washburn record with 62 3-pointers and led the MIAA with 43.4 percent mark beyond the arch. Scored 30 points on 10-for-15 3-pointers against Truman State Jan. 17 in Lee Arena. Was named MIAA Player of the Week for her efforts and tied two other Division II womens players for the most 3-pointers in a game in 2003-04.

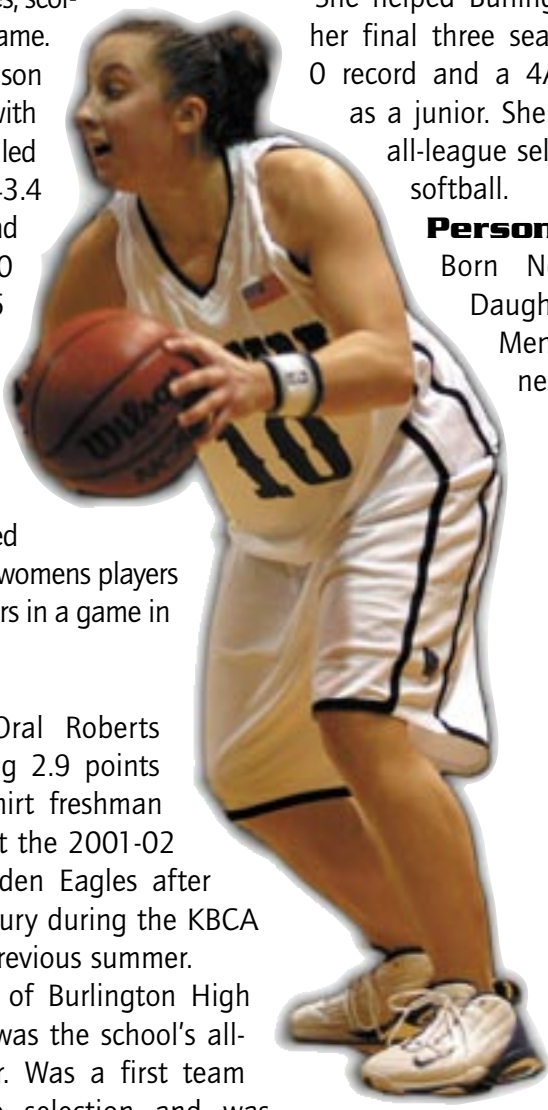
Background
A transfer from Oral Roberts University, averaging 2.9 points a game as a redshirt freshman in 2002-03. Sat out the 2001-02 season for the Golden Eagles after suffering a knee injury during the KBCA All-Star game the previous summer. A 2001 graduate of Burlington High School, where she was the school's all-time leading scorer. Was a first team Class 4A All-State selection and was named the Emporia Gazette's All-Area

Player of the Year her junior and senior seasons. Also earned second team all-class all-state honors her senior year and third team all-class honors her junior year.

She helped Burlington to a 67-5 record her final three seasons, including a 26-0 record and a 4A state championship as a junior. She also was a first team all-league selection in volleyball and softball.

Personal

Born November 30, 1982. Daughter of Chris and Jamie Menard. Majoring in business.



YEAR	GP-GS	MIN-AVG	FG	FGA	PCT	3FG	3FGA	PCT	FT	FTA	PCT	OFF	DEF	TOT	AVG	PF	FO	A	TO	BLK	ST	PTS	AVG
2003-04	31-0	500-16.1	79	182	.434	62	143	.434	7	9	.778	9	32	41	1.3	23	0	25	21	4	17	227	7.3
TOTALS	31-0	500-16.1	79	182	.434	62	143	.434	7	9	.778	9	32	41	1.3	23	0	25	21	4	17	227	7.3



5 JUWANNA RIVERS

5-7 • SENIOR • GUARD
CLEVELAND, OHIO/TYLER JUNIOR COLLEGE

CAREER HIGHS

- POINTS: 28**
2/14/04 at Truman
- REBOUNDS: 7**
1/31/04 vs. MWSC
- ASSISTS: 8**
2/11/04 vs. SBU
- STEALS: 4**
2/21/04 vs. UMR
- FG'S MADE: 8**
(2) last 3/6/04 vs. NWMSU
- FT'S MADE: 11**
2/14/04 at Truman

TIP INS

- Favorites:**
- Food**
Chicken or pork chops (fried)
- TV Show**
Sportscenter
- Movie**
Scarface
- Other sport**
Football
- Sports Announcer**
Dick Vitale
- Sports team**
Lakers
- Advice to youngsters**
Never give up
- Top sports moment**
Watching high school coach win state championship
- Person in history I'd like to meet**
Harriet Tubman
- Sportscenter fantasy**
Interview Michael Jordan

At Washburn: Will contend for starting point guard role in second year in the program. Effective scorer off the dribble and from the perimeter.

As a junior in 2003-04: Named team MVP last season despite coming off the bench in all 31 games. Was an honorable mention All-MIAA selection and was named to the All-South Central Region tournament team. Scored a career-high 28 points at Truman State Feb. 14 and was named MIAA Player of the Week. Dished out a career-high eight assists against Southwest Baptist Feb. 11.

Background
A transfer from Tyler Junior College, where she helped lead the Apaches to a Region XIV title and a seventh place finish at the NJCAA national tournament with a 28-8 record. Led the team in scoring with 16.0 points a game, making 59.8 percent of

her field goals and a region best 84.4 percent of her free throw attempts. Earned first team all-conference and All-Region XIV honors and was a second team All-American selection.

Personal

Born May 25, 1983. Majoring in human services.



YEAR	GP-GS	MIN	AVG	FG	FGA	PCT	3FG	3FGA	PCT	FT	FTA	PCT	OFF	DEF	TOT	AVG	PF	FO	A	TO	BLK	ST	PTS	AVG
2003-04	31-0	566	18.3	102	222	.459	22	63	.349	50	73	.685	30	54	84	2.7	63	1	92	80	2	44	276	8.9
TOTALS	31-0	566	18.3	102	222	.459	22	63	.349	50	73	.685	30	54	84	2.7	63	1	92	80	2	44	276	8.9

THREE STRAIGHT NCAA TOURNAMENT APPEARANCES



11 APRIL ROADHOUSE

5-7 • JUNIOR • GUARD

OSBORNE, KAN./OSBORNE HIGH SCHOOL

CAREER HIGHS

POINTS: 8
 (3) last 3/4/04 vs. PSU
REBOUNDS: 7
 12/17/03 vs. Cameron
ASSISTS: 7
 11/25/03 vs. Rockhurst
STEALS: 7
 3/4/04 vs. PSU
FG'S MADE: 4
 1/20/04 at SBU
FT'S MADE: 5
 12/17/03 vs. Cameron

TIP INS

Favorites:
Food
 Corn on the cob
Book
 Anything by Stephen King
Movie
 Go
Music
 Zero
In the movie of my life, who would play me
 Lisa Kudrow
Sport other than basketball
 Football
Sports Team
 76ers
Top sports moment
 Winning state tournament twice
Pregame superstition
 Listen to the same song

At Washburn: Stepped in to the starting role at point guard last season. A great ball handler and defender who will be looked on for leadership as an upperclassman this season.

As a sophomore in 2003-04: Started all 31 games, dishing out a team-high 101 assists. Led the MIAA with a 2.40 assist/turnover ratio and was named to the MIAA All-Defensive team. Dished out a career high seven assists at Rockhurst Nov. 25 and at home against Southwest Baptist Jan. 20.

As a freshman in 2002-03: Played in all 34 games, averaging 2.2 points and 1.9 rebounds. Scored a career-high eight points in the MIAA home opener against State Jan. 4. career-high five assists against Benedictine College Dec. 10.

Background

Roadhouse earned first team Class 2A All-State honors and third team all-class honors after leading Osborne to a 55-33 win over Ness City to win the 2A state

championship last season as a senior. Was named first team all-class all-state by they Hays Daily News. Finished her career with a 95-7 record in four seasons.

She earned first team all-league and first team all-state honors as a junior, averaging 10 points, 3.5 rebounds, 6.8 assists and 4.5 steals a game for the Bulldogs.

She also earned third team Topeka Capital Journal Class 2A all-state honors as a sophomore and junior and

was Kansas Sports Magazine's all-class leader in assists each of her first three seasons. Osborne also won the state championship in 1999-2000 and finished second in 2000-01.

She also participated in track, placing first in class 1A in the 400 and 800 meter dash her freshman and sophomore years.

Personal

Born April 12, 1984. Daughter of Mark and Karol Roadhouse. Undecided on a major.



YEAR	GP-GS	MIN-AVG	FG	FGA	PCT	3FG	3FGA	PCT	FT	FTA	PCT	OFF	DEF	TOT	AVG	PF	FO	A	TO	BLK	ST	PTS	AVG
2002-03	34-0	463-13.6	27	59	.458	5	12	.417	15	20	.750	7	56	63	1.9	32	0	35	30	4	26	74	2.2
2003-04	31-31	707-22.8	35	78	.449	0	6	.000	23	30	.767	15	55	70	2.3	46	0	101	42	5	41	93	3.0
TOTALS	65-31	1170-18.0	62	137	.453	5	18	.278	38	50	.760	22	111	133	2.0	78	0	136	72	9	67	167	2.6



45 CARLA SINTRA

6-1 • SENIOR • FORWARD
GOIANIA, BRAZIL/SOUTH PLAINS COLLEGE

CAREER HIGHS

- POINTS: 22**
1/28/04 at PSU
- REBOUNDS: 13**
12/9/03 vs. Benedictine
- ASSISTS: 5**
(3) last 2/21/03 vs. UMR
- STEALS: 4**
2/4/04 vs. PSU
- FG'S MADE: 9**
(2) last 1/28/04 at PSU
- FT'S MADE: 7**
2/18/04 vs. NWMSU

TIP INS

- Favorites:**
- Food**
Italian
- Book**
The Bible
- TV Show**
E.R.
- Movie**
Message in a bottle
- Music**
Eagles
- Other sport**
Soccer
- In the movie of my life, who would play me**
Demi Moore
- Professional Sports team**
Cowboys
- Cartoon**
Tom and Jerry

At Washburn: Will return as a starter in the post after a solid junior season. Top returning scorer and rebounder that has great presence in the paint.

As a junior in 2003-04: Started all 31 games, earning second team All-MIAA honors with team-high 10.8 points and 6.0 rebounds a game. Was 19th in the MIAA in scoring, 13th in rebounding and fourth in blocked shots. Scored a career-high 22 points at Pittsburg State Jan. 28. Made two free throws with 1.6 seconds left to give Washburn a 51-50 win at Emporia State Feb. 24.

Background

A transfer from South Plains College in Levelland, Texas, where she averaged 11.5 points and 6.8 rebounds a game to help the Lady Texans to a 23--9 record in 2002-03. Finished her sophomore season with 68 assists and 42 steals and won the Lady Texan rebounder award. She averaged 10 points and six rebounds a game as a freshman and earned the Lady Texan Fighting Heart award. Named to the All-Western Junior College Athletic Conference and All-Region V teams both

seasons at South Plains.

A 1999 graduate of Joao Baptista Brito in Goiania, Brazil.

Personal

Born November 15, 1980. Majoring in physical therapy.



YEAR	GP-GS	MIN-AVG	FG	FGA	PCT	3FG	3FGA	PCT	FT	FTA	PCT	OFF	DEF	TOT	AVG	PF	FO	A	TO	BLK	ST	PTS	AVG
2003-04	31-31	693-22.4	129	292	.442	0	4	.000	78	112	.696	62	124	186	6.0	89	2	57	91	38	41	336	10.8
TOTALS	31-31	693-22.4	129	292	.442	0	4	.000	78	112	.696	62	124	186	6.0	89	2	57	91	38	41	336	10.8

THREE STRAIGHT NCAA TOURNAMENT APPEARANCES



44 MEGAN SULLIVAN

6-1 • SOPHOMORE • FORWARD
 SPRING HILL, KAN./SPRING HILL HIGH SCHOOL

CAREER HIGHS

- POINTS: 8**
(2) last 12/11/03 vs. Avila
- REBOUNDS: 7**
11/22/03 vs. St. Mary
- ASSISTS: 2**
(2) last 1/17/04 vs. TSU
- STEALS: 4**
12/11/03 vs. Avila
- FG'S MADE: 4**
11/22/03 vs. St. Mary
- FT'S MADE: 2**
(2) last 12/11/03 vs. AU

TIP INS

- Favorites:**
- Food**
Chips and Salsa with cheese dip
- Book**
The Wedding
- TV Show**
Desperate Housewives
- Movie**
Rudy & Old School
- Other sport**
Softball & Volleyball
- Top Sports Moment**
Winning HS State Basketball title as senior
- If I won the lottery the first thing I would buy**
Clothes & shoes
- If I could live anywhere in the world it would be**
On a beach
- Person I would like to be stranded on an island with**
Matt Damon

At Washburn: A athletic post player that will add depth in the Washburn front court again this season. Has versatility and size to play the four and five spots and is a solid defender and rebounder.

At Washburn as a freshman in 2003-04: Played in 22 games, scoring 2.3 points and grabbing 2.0 rebounds a game. Scored career high eight points against St. Mary Nov. 22 and against Avila Dec. 11.

Background
 A 2003 graduate of Spring Hill High School, where she earned Class 4A all-state honors to help the Broncos to a 56-45 win in the Class 4A state basketball championship over Hayden as a senior. She averaged 18 points and 10 rebounds a game in 2002-03 and was a four-year

member of the all-league team. She also earned all-league honors in volleyball and was Academic all-state in 2003.

Personal

Born March 11, 1985. Daughter Tim and Linda Sullivan. Majoring in nursing.



YEAR	GP-GS	MIN-AVG	FG	FGA	PCT	3FG	3FGA	PCT	FT	FTA	PCT	OFF	DEF	TOT	AVG	PF	FO	A	TO	BLK	ST	PTS	AVG
2003-04	22-0	174-7.9	21	53	.396	0	0	.000	8	18	.444	24	20	44	2.0	12	0	9	14	2	11	50	2.3
TOTALS	22-0	174-7.9	21	53	.396	0	0	.000	8	18	.444	24	20	44	2.0	12	0	9	14	2	11	50	2.3



32 BROOKE UBELAKER

5-10 • SOPHOMORE • FORWARD
OSBORNE, KAN./OSBORNE HIGH SCHOOL

CAREER HIGHS

POINTS: 27
3/4/04 vs. PSU
REBOUNDS: 12
(2) last 3/12/04 vs. NWMSU
ASSISTS: 3
(2) last 2/14/04 at TSU
STEALS: 5
1/17/04 vs. TSU
FG'S MADE: 9
3/4/04 vs. PSU
FT'S MADE: 8
3/6/04 vs. NWMSU

TIP INS

Favorites:
Food
Chili
Book
To Kill a Mockingbird
TV Shows
One Tree Hill/Real World
Movies
Dirty Dancing/
Remember the Titans/
S.W.A.T
Other sport
Volleyball
Top Sports Moment
Winning two state titles
Person in history I want to meet
Jesus
Advice to youngsters
Work hard
Superstition
Tie my shoes a certain way

At Washburn: Will return to the starting lineup at the four spot after a solid freshman campaign. A great scorer and rebounder that has ability to shoot from the perimeter.

At Washburn as a freshman in 2003-04: Started all 31 games., averaging 10.3 points and 5.4 rebounds a game. Made 121 of 218 attempts from the field, including 22 of 50 3-pointers. Scored a career-high 27 points by hitting 9 of 12 shots (5 of 5 3-pointers) against Pittsburg State in the first round of the MIAA Tournament. Scored 25 points in her first NCAA Postseason Tournament game against Northwest Missouri State in a 65-64 quarterfinal win. Also tied her career-high with 12 rebounds in the game for her fourth career double-double.



Background

A 2003 graduate of Osborne High School, where she finished as the school's all-time scoring leader and seventh in state history with 2,293 career points. As a senior she led Osborne to a runner-up finish in the 2A state tournament and a 23-3 record by averaging 28.3 points, 10 rebounds, four assists and 5.6 steals a game. She earned all-state all-class honors her senior year and helped the Bulldogs to a 99-5 record during her four seasons, including two state titles as a freshman and junior.

As a junior in 2001-02 she was also an all-state all-class selection, averaging 25 points, 9.2 rebounds and four assists a game. She set a 2A state tournament record with 37 points in a 55-33 win over Ness City.

Ubelaker earned all-league honors in volleyball her last three seasons and helped the Bulldog track team to three straight state titles by winning the discus and 4x800 relay titles as a junior.

Personal

Born January 16, 1985. Daughter of Kenny and Shari Ubelaker. Majoring in elementary education.

YEAR	GP-GS	MIN-AVG	FG	FGA	PCT	3FG	3FGA	PCT	FT	FTA	PCT	OFF	DEF	TOT	AVG	PF	FO	A	TO	BLK	ST	PTS	AVG
2003-04	31-31	654-21.1	121	218	.555	22	50	.440	54	63	.857	61	107	168	5.4	45	1	24	50	7	28	318	10.3
TOTALS	31-31	654-21.1	121	218	.555	22	50	.440	54	63	.857	61	107	168	5.4	45	1	24	50	7	28	318	10.3

THREE STRAIGHT NCAA TOURNAMENT APPEARANCES



42 LORA WESTLING

5-10 • SENIOR • GUARD
CASPER, WYOM./NATRONA COUNTY HIGH SCHOOL

CAREER HIGHS

POINTS: 23

11/18/03 at

Southeastern Okla. St.

REBOUNDS: 11

12/6/02 at Drury

ASSISTS: 7

(2) last 1/14/04 vs NWMSU

STEALS: 4

2/6/03 at SBU

FG'S MADE: 10

11/18/03 at SOSU

FT'S MADE: 9

2/14/04 at TSU

TIP INS

Favorites:

Music Group

Blink 182/Yellowcard

Foods

Mom's Cookies/Dad's Ribs

TV Show

The OC

Movie

Moulin Rouge

In the movie of my life, who would play me

Drew Barrymore

Top Sports Moment

Making Elite Eight in 2003

Pregame superstition

Be the last one to shoot before tipoff

If I could live anywhere

Oahu, Hawaii

Westling at Washburn: An outside-inside threat that started the last two seasons for the Lady Blues at the three spot. Will be looked upon as another four-year senior leader.

As a junior in 2003-04: Started all 31 games, averaging 9.7 points, 4.1 rebounds and 2.5 assists a game to earn second team All-MIAA honors. Scored a career-high 23 points at Southeastern Oklahoma State Nov. 18.

As a sophomore in 2002-03: Played in all 34 games, making 15 starts and averaged 7.0 points a game. Had a season-high 18 points to help Washburn to an 87-71 victory over Drury in the South Central Region finals. Was named to the All-South Central Region Tournament team. Was also named to the MIAA All-Tournament team.

As a freshman in 2001-02:

Played in all 30 games, making two starts to average

points, 2.4 rebounds and 1.7 assists a game.

Opened her career with a 19-point effort, which was the most ever in a Lady Blue debut. Scored 10 points at Southwest Baptist Jan. 10.

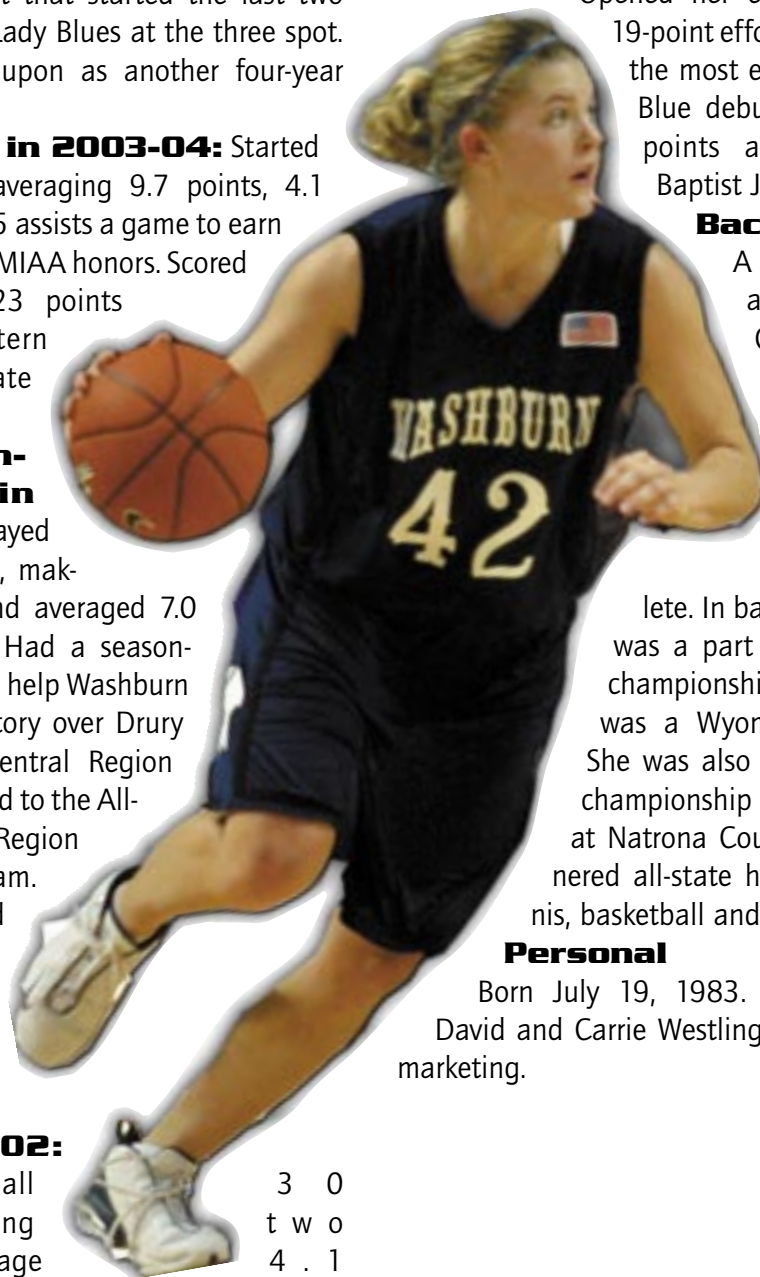
Background

A 2001 graduate of Natrona County High in Wyoming, where she was a talented multi-sport athlete.

In basketball, Lora was a part of two state championship teams and was a Wyoming All-Star. She was also on two state championship soccer teams at Natrona County and garnered all-state honors in tennis, basketball and soccer.

Personal

Born July 19, 1983. Daughter of David and Carrie Westling. Majoring in marketing.



YEAR	GP-GS	MIN-AVG	FG	FGA	PCT	3FG	3FGA	PCT	FT	FTA	PCT	OFF	DEF	TOT	AVG	PF	FO	A	TO	BLK	ST	PTS	AVG
2001-02	30-2	397-13.2	44	119	.370	14	54	.259	22	33	.667	26	46	72	2.4	42	0	51	42	8	20	124	4.1
2002-03	34-15	664-19.5	91	215	.423	32	85	.376	23	38	.605	43	83	126	3.7	63	1	75	53	7	32	237	7.0
2003-04	31-31	785-25.3	102	262	.389	36	119	.303	61	82	.744	45	83	128	4.1	55	0	79	46	17	36	301	9.7
TOTALS	95-48	1846-19.4	237	596	.398	82	258	.318	106	153	.693	114	212	326	3.4	160	1	205	141	32	88	662	7.0

BACK-TO-BACK MIAA CHAMPIONSHIPS



14 STACEY BECKER

5-9 • JUNIOR • GUARD

McPHERSON, KAN./UNIVERSITY OF KANSAS

TIP INS

Favorites:

Food

Chinese

TV Show

Friends

Movie

Contact

Music

Country music

In the movie of my life, who would play me

Demi Moore

Superstition

Sleeping with my socks on

At Washburn: A transfer from the University of Kansas that sat out last season as a redshirt. Will add depth at the guard spot with great scoring and outside shooting skills.

Background

A transfer from the University of Kansas, where she played one season. Originally signed to play at Wichita State after graduating from McPherson High School in 2001. Helped McPherson to undefeated state championships during her freshman and sophomore season and a combined 56-0 record. Left the school as the all-time lead-

ing scorer, earning all-state first team and league Most Valuable Player honors twice. Also earned second team all-state honors two seasons. Was a member of the Washburn soccer team in 2003.

Personal

Born Nov. 21, 1982. Daughter of George and Donna Becker. Majoring in biology.



42 STEPHANIE BOUTERSE

6-2 • JUNIOR • FORWARD

PARAMARIBO, SURINAME/MIDLAND COLLEGE

TIP INS

Favorites

Food

Steak-Medium Well

Movie

Love and Basketball

Other Sport

Soccer

Pro Athletes

Michael Jordan

Allen Iverson

Pro team

L.A. Lakers

Cartoon

Tom and Jerry

Advice to Youngsters

Follow Your Dreams, Say no to Drugs and Stay in School

At Washburn: A transfer from Midland College that will add depth in the front court. Possesses great size and athleticism in the post.

Background

Transferred to Washburn from Midland College in Midland, Texas. Played two seasons for the Lady Chaps under coach Ron Jones. A 2002 graduate of Selecta High School in Paramaribo, Suriname.

Personal

Born Sept. 21, 1984. Daughter of Arnold Bouterse and Elfreda Powell.



13 JENNIFER HARRIS

5-10 • JUNIOR • GUARD

MORRISTOWN, N.J./TRINITY VALLEY CC

TIP INS

Favorites

Food

Spaghetti

Movie

Love and Basketball

Other Sport

Football

Pro Athlete

Michael Jordan

Pro team

N.J. Nets

Cartoon

Tom and Jerry

Advice to Youngsters

Always Work Hard

At Washburn: An impact transfer at the two guard spot that has the ability to score inside and outside and defend.

Background

Transferred to Washburn from Trinity Valley Community College in Athens, Texas. Was named to the NJCAA National Tournament team after leading Trinity to a 36-0 record and national title by scoring 25 points in the title game. Made 7 of 14 3-pointers in TVCC's 77-66 win over Gulf Coast Community College in the championship game. Was named to the NJCAA All-American team. A

2002 graduate of Morristown High School in Morristown, N.J., where she was a McDonalds All-American Top 100 Finalist and New Jersey High School All-Star.

Personal

Born Aug. 9, 1984. Daughter of Jennifer Harris. Majoring in mass media.



2004-05 Washburn Lady Blues: Front Row (l to r) - Student Assistant Thorlan Buchanan, Dani McHenry, Cindy Keeley, Carla Sintra, Juwana Rivers, Lora Westling, Alison Garrett, Brooke Ubelaker, April Roadhouse, Student Assistant Alex Jeannin. Back Row (l to r) - Head Coach Ron McHenry, Student Assistant Montoya Whitfield, Erin Menard, Jennifer Harris, Stephanie Bouterse, Megan Sullivan, Stacey Becker, Holly Henrichs, Assistant Coach Dustin Odum.