



2006-07 LADY BLUES BASKETBALL SCHEDULE

DATE	OPPONENT	TIME
Sun., Nov. 5	at Kansas (Exhibition)	L 62-68
Tues., Nov. 7	at Missouri-Kansas City (Exhibition)	W 73-70
Fri., Nov. 10	vs Ichabod Golf Team (Exhibition)	L 65-79
Emporia State/Candlewood Suites Classic • Emporia, Kan.		
Fri., Nov. 17	vs Southwestern Oklahoma	5:30 p.m.
Sat., Nov. 18	vs Cameron	5:30 p.m.
Premier Mortgage/WIBW Radio Holiday Classic • Topeka, Kan.		
Fri., Nov. 24	Missouri-Rolla vs Lynn	5:30 p.m.
Fri., Nov. 24	WASHBURN VS CAMERON	7:30 p.m.
Sat., Nov. 25	Missouri-Rolla vs Cameron	5:30 p.m.
Sat., Nov. 25	WASHBURN VS LYNN	7:30 p.m.
Mon., Dec. 4	Southwestern Collette	7 p.m.
Sat., Dec. 9	MISSOURI WESTERN*	5:30 p.m.
Tues., Dec. 12	BENEDICTINE*	
Sat., Dec. 16	LINCOLN	3 p.m.
Hoops and Surf Classic • Honolulu, Hawaii		
Tues., Dec. 19	vs Northwood (Mich.)	2 p.m. HST
Wed., Dec. 20	vs Glenville State	noon HST
Sat., Dec. 30	at Central Missouri*	1:30 p.m.
Wed., Jan. 3	EMPORIA STATE*	5:30 p.m.
Sat., Jan. 6	NORTHWEST MISSOURI*	5:30 p.m.
Wed., Jan. 10	FORT HAYS STATE*	5:30 p.m.
Sat., Jan. 13	at Truman*	1:30 p.m.
Wed., Jan. 17	SOUTHWEST BAPTIST*	5:30 p.m.
Sat., Jan. 20	PITTSBURG STATE*	5:30 p.m.
Wed., Jan. 24	at Missouri Southern*	5:30 p.m.
Sat., Jan. 27	at Missouri Western*	5:30 p.m.
Thurs., Feb. 1	MISSOURI SOUTHERN*	5:30 p.m.
Sat., Feb. 3	at Pittsburg State*	5:30 p.m.
Tues., Feb. 6	at Southwest Baptist*	5:45 p.m.
Sat., Feb. 10	TRUMAN*	1:30 p.m.
Wed., Feb. 14	at Northwest Missouri*	5:30 p.m.
Sat., Feb. 17	at Emporia State*	5:30 p.m.
Wed., Feb. 21	at Fort Hays State*	5:30 p.m.
Sat., Feb. 24	CENTRAL MISSOURI*	5:30 p.m.
Mar. 2, 3, 4	MIAA Postseason Conference Tournament	TBA
Mar. 9, 10, 12	NCAA South Central Regional Tournament	TBA
Mar. 21, 22, 24	NCAA Elite Eight	TBA

Home Games, CAPS, BOLD, BLUE - Games played at Lee Arena

* Denotes MIAA Game - Times CST unless listed otherwise

Washburn Sports Information Office

Sports Information Director	Gene Cassell
WBB Contact	Cassell
SID Office Phone	(785) 670-1791
SID Fax	(785) 670-1091
e-mail	gene.cassell@washburn.edu
Assistant SID	Jeremy Wangler
e-mail	jeremy.wangler@washburn.edu
Athletics Web site	www.wusports.com
Overnight address	1700 SW College Topeka, KS 66621



Series Record: WU leads 2-1

Last Meeting: WU 92-40 on Nov. 19, 2005 in Joplin

Last WU win: same

Last SWOK win: 64-57 on March 6, 1984 in NAIA district playoffs

Worth noting: Washburn topped the Bulldogs 92-40 in the MSSU Invite last season.



Series Record: WU leads 3-0

Last Meeting: WU 66-50, Dec. 21, 2005 in Las Vegas

Last WU win: same

Last CU win: n/a

Worth noting: The teams will play on Friday at the Premier Mortgage/WIBW Radio Holiday Classic in Topeka on Nov. 24

Games 1 and 2

Game 1 Matchup: Washburn (0-0) vs Southwestern Oklahoma (1-0)

Date: Friday, Nov. 17, 2006

Time: 5:30 p.m.

Game 2 Matchup: Washburn vs Cameron (0-1 entering tourney)

Date: Saturday, Nov. 18, 2006

Time: 5:30 p.m.

Site: White Auditorium (5,000)

Radio: AM580 WIBW with play by play Mark Elliott.

Online: <http://www.580wibw.com/audio/wibwam.asx>

Live Stats: not available

Video Webstream: not available

Coaches: Washburn head coach Ron McHenry is 159-33 (.818) in his seventh season - McHenry is 2-0 against Southwestern Oklahoma and 3-0 against Cameron.

Southwestern Oklahoma is coached by Shelly Pond. She is 77-86 in her 7th year as coach of the Bulldogs.

Cameron is coached by Kevin Hackerott. He is his first season as the Aggies head coach.

Rankings: The Lady Blues are ranked No. 6 in the pre-season WBCA ESPN/USA Today Division II Coaches Poll. Neither Cameron or Southwestern Oklahoma is ranked.

NO. 6 LADY BLUES OPEN REGULAR SEASON AT EMPORIA STATE CLASSIC . . .

The No. 6 Washburn Lady Blues will open the 2006-07 regular season at the Emporia State/Candlewood Suites Classic in Emporia's White Auditorium when they open with Southwestern Oklahoma (1-0) at 5:30 p.m. on Friday night. The Lady Blues will then take on Cameron (0-1) on Saturday night at 5:30 p.m. The meeting with Cameron will be the first of two over the next six days as the two teams will play again on Friday, Nov. 24 in Lee Arena in the second game of the Premier Mortgage/580 WIBW Radio Holiday Classic at 7:30 p.m.

LADY BLUES ON RADIO . . .

Lady Blues games will be broadcast on AM 580 WIBW with former Washburn quarterback Mark Elliott calling all the action. The games will also be streamed live online at <http://www.580wibw.com/audio/wibwam.asx>.

2006-07 SEASON PREVIEW . . .

One year removed from winning their first NCAA Championship in school history, the Lady Blues looked strong to repeat after holding down the No. 1 spot all season in the WBCA Coaches Poll. However a heartbreaking overtime loss in the regional final ended those dreams and the Lady Blues' NCAA Division II record 51-game winning streak. Despite the loss, Washburn won its fourth straight MIAA regular season championship and its second straight MIAA Postseason Tournament championship in Kansas City, finishing the season with a 32-1 record.

Probable Washburn Starters

LADY BLUES (0-0)	HT	YR	Pos	Hometown	PPG*	RPG*
3 Cindy Keeley	5-9	Sr.	G	Great Bend, Kan.	5.9	3.9
10 Jessica Aebi	5-7	Sr.	G	Enid, Okla.	4.8	1.0
32 Brooke Ubelaker	5-10	Sr.	F	Osborne, Kan.	16.6	5.4
25 Megan Sullivan	6-1	Sr.	F	Spring, Hill, Kan.	9.4	6.9
4 Amanda Holmes	6-2	Jr.	F	Topeka, Kan.	5.6	4.5

*stats from 2005-06 season



Ron McHenry, 7th season

Since his appointment as head coach prior to the 2000-01 season, Ron McHenry has quickly returned the Washburn women's basketball program to national prominence.

In seven seasons on the Lady Blues bench, McHenry has won 82 percent of his games going 159-33 overall with four straight MIAA Championships and two straight

MIAA Tournaments. During the 2005-06 season, Washburn continued its NCAA record 51-game winning streak into the regional finals, where Washburn fell in overtime. For his efforts, he named the MIAA Coach of the Year after leading the team to a perfect 16-0 season.

In 2004-05, McHenry was named MIAA Coach of the Year and Molten/Division II Bulletin National Coach of the Year after guiding Washburn to its first-ever NCAA Division II crown in any sport. He also led the Lady Blues to a third straight MIAA regular season title, an MIAA Tournament title and a South Central Regional title with a 35-2 record.

In his seven seasons McHenry has posted a 159-33 (.828) record overall and 83-23 (.783) record in the MIAA. He is 146-11 the last five seasons. He is third among active women's NCAA Division II Coaches in winning percentage.

The Lady Blues posted a 26-5 record and a second straight MIAA regular season crown in 2003-04. The Lady Blues also earned a berth to the NCAA Division II National Tournament for the third straight year.

In only his third season in 2002-03, McHenry guided the Lady Blues to a regular season MIAA title, a Sonic/MIAA Tournament championship and a berth to the Division II Elite Eight.

The Lady Blues tied for second most wins in team history at 30-4 and went to the Elite Eight for the third time in team history. For his efforts he was named District VI Coach of the Year.

In his second season McHenry engineered one of the best turn-arounds in Division II, guiding Washburn to the South Central Regional and finishing with a 23-7 record.

He guided the Lady Blues to back-to-back 20 win seasons after finishing with a 13-14 record in 2000-01, which was also his first season as a head coach at the collegiate level.

McHenry was named the head coach on May 8, 2000.

He became only the fifth coach in the history of the women's basketball program at Washburn and the first new head coach since Patty Dick joined the Lady Blues as the head coach in the 1977-78 season.

Prior to his new appointment, McHenry spent the previous 11 seasons as a member of the men's basketball coaching staff under current coach Bob Chipman. While on the Washburn bench, he was a part of 243 wins. In addition to his basketball duties, McHenry was the men's golf coach for eight seasons.

McHenry has had a diverse coaching career. He began his career as a graduate assistant to Chipman during the 1984-85 season. He then went on to Perry High School in 1986 where he served as assistant boys coach.

McHenry quickly moved up the coaching ranks in 1988 when he assumed an assistant's position with the Topeka Sizzlers of the Continental Basketball Association.

McHenry eventually became the Sizzlers' interim head coach before joining the Washburn staff for the 1989-90 campaign. During his first year on the Washburn staff, McHenry was the department's academic advisor.

McHenry played for Washburn after stints at Coffeyville Community College and the University of Kansas. He started for the Ichabods during the 1983-84 season.

He graduated from Washburn with a bachelor's degree in communications and went on to earn a master's degree in sports administration from Wichita State University in 1987.

McHenry and his wife, Mischa, have three children, Danielle, Samantha and Ronnie.

The Lady Blues are primed to continue last season's success with three returning starters and eight letterwinners back from a year ago and the addition of six newcomers who will have the drive to try and become the first MIAA team in conference history to win five straight regular season championships.

Guard

The Lady Blues' biggest hit will come at the guard position this season as Washburn bids farewell to the division II consensus player of the year in Jennifer Harris, who led the nation with a 24.2 points per game average, and April Roadhouse, the MIAA's defensive player of the year, who was a mainstay at the point guard position for the last four seasons.

Senior Cindy Keeley returns at one guard position after starting all 33 games last season and averaging 5.9 points and 3.9 rebounds per game. She scored a career-high 19 points against Southwest Baptist as a junior. Keeley was also named to the MIAA's All-Defensive team after drawing the assignment of guarding the opposing team's best scorer much of the year.

Looking to fill the hole left Roadhouse at the point will be senior Jessica Aebi. Aebi saw time at both the point and at the shooting guard spots after transferring from Northeastern Oklahoma A&M by way of Southeast Missouri State. She averaged 4.8 points per game hitting 23 of 54 3-point attempts on the season playing in all 33 games.

After watching her playing time through the season increase, sophomore Jessica Mainz saw action in 22 games running some point and averaged 2.5 points per game after joining the team after finishing her duty on the Lady Blues soccer team.

Also returning is senior point guard Holly Henrichs and sophomore shooting guard Stephanie Wittman. Both played in 19 games last season off the bench for the Lady Blues.

The Lady Blues have four transfer and one high school guard who will look to make an impact in the Washburn backcourt with both scoring and defense.

Junior Sequorhea Stiger was a Kodak/WBCA All-American after leading Trinity Valley Community College with 17.1 points per game en route to first team all-region and player of the year regional awards.

Senior Nikki Holmes, a transfer from Tyler Junior College, averaged 15.1 points, 6.1 rebounds and 2.1 assists as a freshman at Tyler and 12.2 points per game as a sophomore.

Junior KG Hellen joins the Lady Blues after playing at Barton County where she scored 9.4 points with 3.3 rebounds per game starting 18 as a sophomore.

Junior point guard Karla Tailele returns to the court after missing the second half of the season at Hutchinson Community College with a knee injury. Before the injury, she was averaging 9.3 points per game as a sophomore, increasing her scoring output from 8.6 points per game as a freshman.

The lone prep signing in the backcourt for Washburn is Hope Gregory. Gregory was a two-time all-state pick and the Class 3A player of the year at Cheney High School.

Forwards/Post

The Lady Blues have the most experience returning in the front court as three different Lady Blues had starting time last season. Off the bench, Washburn lost four-year Lady Blue Dani McHenry, who played in 133 games – the second most in school history – and senior transfer Bojana Samardziska, who recorded 46 blocks with a school-record nine of those coming against Benedictine.

Headlining the group is senior forward Brooke Ubelaker. Ubelaker was an honorable mention All-America pick after scoring 16.6 points per game. Ubelaker hit a school-record 71 3-pointers last season and needs one more to become the school's all-time leader in 3-point baskets. She enters her senior season eighth on the all-time scoring chart with 1,344 career points after starting all 101 games of her Washburn career.

Fellow senior Megan Sullivan returns to the court after missing the final six games of the season with a knee injury after starting the first 27. Sullivan was averaging 9.4 points per game and a team-high 6.9 rebounds per game. She hit 52 percent of her shots from the field connecting on 106 of 203 attempts.

WBCA National Coaches Preseason Poll*Oct. 31, 2006*

1. Grand Valley State Univ. (Mich.) - 17	656
2. University of North Dakota - 7	613
3. Emporia State University (Kan.) -1	577
4. Saint Cloud State University (Minn.)	558
5. California State University, Chico	493
6. Washburn University (Kan.)	468
7. Henderson State University (Ark.)	438
8. Glenville State College (W. Va.)	402
9. American International College (Mass.)	387
10. Drury University (Mo.)	369
11. West Texas A&M University	356
12. Southern Connecticut State University	347
13. Delta State University (Miss.) - 1	339
14. University Of Charleston (W. Va.)	313
15. Northern Kentucky University	273
16. Western Washington University	267
17. Wingate University (N.C.)	263
18. Shaw University (N.C.) - 1	250
19. Florida Gulf Coast University	176
20. Rollins College (Fla.)	168
21. University Of California-San Diego	113
22. Fort Valley State University (Ga.)	112
23. Regis University (Colo.)	104
24. Seattle Pacific University (Wash.)	102
25. California University Of Pennsylvania	86

Others Receiving Votes: Stonehill College (Mass.) - 78; Wayne State College (Neb.) - 69; Clayton State University (Ga.) - 60; Holy Family University (Penn.) - 59; Angelo State University (Texas) - 54; Anderson University (S.C.) - 28; Elizabeth City State University (Va.) - 21; Northern State University (S.D.) - 19; Saint Augustine's College (N.C.) - 16; Missouri Western State - 13; Seattle University (Wash.) - 12; Johnson C. Smith University (N.C.) - 11; Columbus State University (Ga.) - 10; Michigan Technological University - 10; University Of New Haven (Conn.) - 10; Lewis University (Ill.) - 9; Wheeling Jesuit University (W. Va.) - 9; Barton College (N.C.) - 7; Central Washington University - 7; Minnesota State University, Moorhead - 7; Concordia University, St. Paul - 6; North Carolina Central University - 6; Augustana College (S.D.) - 5; College Of Saint Rose (N.Y.) - 4; Lake Superior State University (Mich.) - 4; Carson-Newman College (Tenn.) - 2; Metropolitan State College of Denver (Colo.) - 2; University Of West Alabama - 2; Bentley College (Mass.) - 1; North Georgia College & State University - 1; Paine College (Ga.) - 1; University Of Nebraska, Kearney - 1; University Of Tampa (Fla.) - 1.

2005-06 NCAA Regional Poll*Final 2006 NCAA Regional Poll*

1 Washburn	24-0	21-0
2 West Texas A&M	24-3	21-3
3 Emporia State	22-3	18-3
4 Angelo State	20-7	19-7
5 Central Missouri State	16-8	15-8
6 Tarleton State	18-8	16-8
7 Northeastern State	17-9	15-9
8 Missouri Western State	13-9	10-9
9 Southwestern Oklahoma State	16-10	14-10
10 Cameron	15-12	15-12

Lady Blues week by week in national poll

Preseason	6	9
1		10
2		11
3		12
4		13
5		14
6		15
7		16
8		17

Junior Amanda Holmes started the final six games of the season after coming off the bench to begin the year after Sullivan's injury. Holmes averaged 5.6 points and 4.5 rebounds per game for the season and averaged nearly 8.0 points per game as a starter.

Adding to the mix will be sophomore transfer Renata Germano from Southeastern Illinois College. The 6-foot-2 Rio de Janero, Brazil, native averaged 3.3 points and 2.9 rebounds per game playing all 33 as a freshman.

Preseason

The Lady Blues were picked No. 11 in the nation in the preseason Women's Division II Bulletin Preseason Top 25 poll that was released. MIAA foe Emporia State, who ended the Lady Blues 51-game winning streak in the regional final, was picked No. 3 in the nation behind North Dakota and defending national champion Grand Valley State. The Lady Blues were picked No. 2 in the MIAA Coaches Poll that was released on Wednesday.

Schedule

The Lady Blues will open the 2006-07 schedule with a pair of NCAA Division I exhibition games within two days of each other. On Nov. 5, the Lady Blues will travel to Lawrence to battle the Kansas Jayhawks and on Nov. 7, Washburn will return to the site of the MIAA Tournament in Municipal Auditorium to take on Missouri-Kansas City. During the run to their 2005 championship, the Lady Blues beat the Jayhawks 62-59 after overcoming a 21-point deficit and the Lady Blues have topped the Kangaroos in three straight exhibition games. Last season, Washburn scored the final 12 points of the game to beat UMKC 51-45.

Washburn will travel to Emporia State for a weekend classic taking on Southwestern Oklahoma and Cameron and then battle Cameron for the second time in six days as the Lady Aggies come to town for the WIBW Radio/Premier Mortgage Holiday Classic. Washburn will take on Lynn to second night. After a non-conference game against Southwestern (Kan.), the Lady Blues will begin the defense of their MIAA title as the open conference play with Missouri Western on Dec. 9 in Lee Arena.

The Lady Blues will wrap up non-conference play with four more games, including another trip to Hawaii before returning to MIAA play at Central Missouri.

The conference schedule will see Washburn play only three of its final nine MIAA games at home.

2006-07 MIAA Standings

	MIAA			OVERALL			
	W	L	Pct.	W	L	Pct.	Streak
Washburn (6)	0	0	.000	0	0	.000	L1
Emporia State (3)	0	0	.000	0	0	.000	L1
Central Missouri	0	0	.000	0	0	.000	L1
Missouri Western	0	0	.000	0	0	.000	L1
Missouri Southern	0	0	.000	0	0	.000	L2
Northwest Missouri	0	0	.000	0	0	.000	L2
Pittsburg State	0	0	.000	0	0	.000	L2
Truman State	0	0	.000	0	0	.000	L1
Southwest Baptist	0	0	.000	0	0	.000	L8

WBCA Division II Coaches Poll ranking in parenthesis

Upcoming Schedule

Wednesday, November 15

Harris-Stowe (Mo.) State @ TSU , 5:30 PM

Southern Indiana @ UCM , 6:00 PM

Stevens (Mo.) @ FHSU , 6:00 PM

Rockhurst (Mo.) @ NWMSU , 7:00 PM

Friday, November 17

MWSU vs. Lincoln (Mo.) , 2:00 PM, @

Quincy (Ill.) Subway Tip-Off Classic

FHSU vs. Texas A&M-Kingsville , 5:30 PM, @

St. Mary-s (Texas) Classic

Harris-Stowe (Mo.) State @ NWMSU , 5:30

PM, in NWMSU Winstead-Reeves Classic

SBU vs. Southeastern Oklahoma State , 5:30

PM, @ PSU Chatter-s Roundball Classic

WU vs. Southwestern Oklahoma State , 5:30

PM, @ ESU Candlewood Suites Classic

Cameron (Okla.) @ ESU , 7:30 PM, in ESU

Candlewood Suites Classic

Missouri-St. Louis @ PSU , 7:30 PM, in PSU

Chatter-s Roundball Classic

UCM @ St. Mary-s (Texas) , 7:30 PM, in St.

Mary-s Tournament

Saturday, November 18

MWSU @ @ Quincy (Ill.) Subway Tip-Off

Classic

Northeastern (Okla.) State @ MSSU , 1:00

PM

Southwestern Oklahoma**Nov. 18 at ESU Tournament • Emporia, Kan.****General Information**

Location: Weatherford, Okla.

Enrollment: 5,200

Nickname: Bulldogs

Colors: Navy Blue and White

Arena: Rankin Williams (2,400)

Conference: Lone Star Conference (North)

Athletics Director: Cecil Perkins

Basketball Information

Head Coach: Shelly Pond

Alma Mater: Southwestern Oklahoma, 1992

School Record: 78-86, 7 years

Career Record: same

Assistant Coaches: Don Dodd

Office Phone: 580-774-3290

Best time to call: mornings

2005-06 Record: 16-12

Conference Record/Finish: 9-3, 1st

Letterwinners Returning/Lost: 5/4

National Ranking: none

Starters Returning/Lost: 2/3

Series Record: WU leads 2-1

Sports Information

WBB Contact: Justin Tinder

Office Phone: 580-774-7162

Office Fax: 580-774-7144

E-mail: justin.tinder@swosu.edu

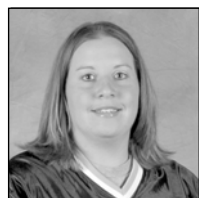
Press Row: 580-330-2979

Website: www.swosu.edu/athletics

Mailing Address: 100 Campus Drive, Weatherford, OK 73096

**2006-07 Schedule**

Nov. 15	at Lincoln	W 64-50
Nov. 17	Washburn	5:30 p.m.
Nov. 18	Emporia State	7:30 p.m.
Nov. 24	at Ouachita Baptist	6:00 p.m.
Nov. 25	at Arkansas Tech	6:00 p.m.
Nov. 30	at Eastern New Mexico	6:30 p.m.
Dec. 2	at West Texas A&M	6:00 p.m.
Dec. 7	Midwestern State	6:00 p.m.
Dec. 9	Lincoln	2:00 p.m.
Dec. 20	Arkansas Tech	7:00 p.m.
Dec. 30	Tarleton State	7:00 p.m.
Jan. 4	at Texas A&M - Kingsville	6:00 p.m.
Jan. 6	at Texas Woman's	2:00 p.m.
Jan. 11	Abilene Christian	6:00 p.m.
Jan. 13	Angelo State	6:00 p.m.
Jan. 17	East Central	6:00 p.m.
Jan. 20	at Southeastern Oklahoma	6:00 p.m.
Jan. 24	at Central Oklahoma	6:00 p.m.
Jan. 27	Northeastern State	2:00 p.m.
Jan. 29	at Cameron	6:00 p.m.
Feb. 3	Texas A&M - Commerce	2:00 p.m.
Feb. 7	at East Central	6:00 p.m.
Feb. 10	Southeastern Oklahoma State	2:00 p.m.
Feb. 14	Central Oklahoma	6:00 p.m.
Feb. 17	at Northeastern State	2:00 p.m.
Feb. 19	Cameron	6:00 p.m.
Feb. 24	at Texas A&M - Commerce	2:00 p.m.

**Shelly Pond
Head Coach****Shelly Pond
Senior Center****Cameron****Nov. 18 at ESU Tournament • Emporia, Kan.****Nov. 24 • 7:30 p.m. at WU Tournament****General Information**

Location: Lawton, Okla.

Enrollment: 5,700

Nickname: Aggies

Colors: Black and Gold

Arena: Aggie Gym (1,800)

Conference: Lone Star Conference (North)

Athletics Director: Jim Jackson

Basketball Information

Head Coach: Kevin Hackerott

Alma Mater: St. Mary of the Plains, 1992

School Record: 0-1, 1 year

Career Record: same

Assistant Coaches: Nikki Maloney

Office Phone: 580-581-5596

Best time to call: mornings

2005-06 Record: 15-13

Conference Record/Finish: 6-10/4th north

National Ranking: none

Series Record: WU leads 3-0

Sports Information

WBB Contact: Craig Martin

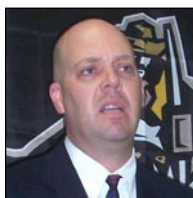
Office Phone: 580-581-2303

E-mail: cmartin@cameron.edu

Website: goaggies.cameron.edu

**2006-07 Schedule**

Nov. 15	at Midwestern State	L 48-62
Nov. 17	at Emporia State	7:30 p.m.
Nov. 18	vs Washburn	5:30 p.m.
Nov. 24	at Washburn	7:30 p.m.
Nov. 25	vs Missouri-Rolla	5:30 p.m.
Nov. 30	at West Texas A&M	6:00 p.m.
Dec. 2	at Eastern New Mexico	2:00 p.m.
Dec. 7	Tarleton State	6:00 p.m.
Dec. 9	Midwestern State	5:00 p.m.
Dec. 18	at Arkansas Tech	7:00 p.m.
Dec. 29	Incarne Word	6:00 p.m.
Jan. 4	at Texas Woman's	7:00 p.m.
Jan. 6	at Texas A&M-Kingsville	2:00 p.m.
Jan. 11	Angelo State	6:00 p.m.
Jan. 13	Abilene Christian	2:00 p.m.
Jan. 17	Southeastern Oklahoma State*	6:00 p.m.
Jan. 20	at East Central *	2:00 p.m.
Jan. 24	at Northeastern State *	6:00 p.m.
Jan. 27	Central Oklahoma*	2:00 p.m.
Jan. 29	Southwestern Okla. State*	6:00 p.m.
Jan. 31	at Texas A&M - Commerce*	6:00 p.m.
Feb. 7	at Southeastern Oklahoma*	6:00 p.m.
Feb. 10	East Central *	2:00 p.m.
Feb. 14	Northeastern State *	6:00 p.m.
Feb. 17	at Central Oklahoma*	6:00 p.m.
Feb. 19	at Southwestern Oklahoma*	6:00 p.m.
Feb. 21	Texas A&M - Commerce*	6:00 p.m.
Feb. 27	Lone Star Tournament (1st round) TBA	

**Kevin Hackerott
Head Coach****THE COACHES . . .**

Washburn head coach Ron McHenry has posted a 159-32 (.828) record overall and 83-23 (.783) record in the MIAA with four consecutive MIAA regular season championships and the 2005 NCAA National Championship. He was named the Lady Blues head coach prior to the 2000-01 season. He is fourth among active women's NCAA Division II Coaches in winning percentage and has the 10th most wins in MIAA history. McHenry was named the MIAA's Coach of the Year in 2005 and in 2006 and the Division II Bulletin National Coach of the Year in 2005. (complete bio on page 2 of notes.)

Southwestern Oklahoma head coach Shelly Pond is set to begin her sixth year as the leader of the SWOSU women's basketball program, Pond's overall record is 61-74 (.452) and includes three trips to the LSC Tournament.

Cameron's head coach Kevin Hackerott was introduced as the school's new women's basketball head coach on April 5, 2006, in a brief news conference on the CU campus. The former athletic director and head women's basketball coach at Pratt (Kan.) Community College, Hackerott was selected from a pool of more than 50 candidates and assumed official control of the Lady Aggie program on April 17.

In three seasons with the Pratt women's team, Hackerott guided the Lady Beavers to new heights. His teams have averaged 17 victories a year while establishing 20 new school records in the process, including season-high marks for points scored, assists and three-pointers made. Hackerott joined the Pratt program in 2003, and promptly guided the team to one of the best records in school history, finishing 20-12 and advancing to the quarterfinals of the ultra-competitive Kansas Jayhawk Community College Conference (KJCCC) postseason tournament.

LAST TIME OUT FOR THE LADY BLUES . . .

(Nov. 10, 2006) TOPEKA - The Lady Blues fell in their final exhibition game of the season dropping a 79-65 game to the Ichabod golf team. The golf team defeated the Lady Blues for the second straight season. The Lady Blues were 4 of 25 from behind the 3-point line and were a combined 24 of 60 from the field.

**WASHBURN/SOUTHWESTERN OKLAHOMA
SERIES NOTES . . .**

Washburn is 2-1 all-time against Southwestern Oklahoma State after winning the last meeting 92-40 on Nov. 19, 2005 in last season's MSSU Classic in Joplin.

LAST MEETING WITH SOUTHWESTERN OKLAHOMA . . .

(Nov. 19, 2005) The No. 1 Washburn Lady Blues basketball team cruised to a 92-40 win over Southwest Oklahoma State in the MSSU Pizza Hut/Fairfield Inn Classic in the Leggett & Platt Athletic Center Saturday. The Lady Blues shot 61.3 percent in the opening half to take a 56-21 lead at the break. The Lady Blues finished with a 52.7 percent mark for the game and outrebounded the Bulldogs 48-31. Jennifer Harris scored 30 points, while Brooke Ubelaker and Bojana Samardziska added 23 and 14 points respectively. Ubelaker was named MIAA Player of the Week, while Harris was named to the all-tournament team.

LAST TIME OUT FOR SOUTHWESTERN OKLAHOMA . . .

(Nov. 15, 2006) The Bulldogs won their opener topping Lincoln 64-50.

WASHBURN/CAMERON SERIES NOTES . . .

The Lady Blues lead the all-time series 3-0 with Cameron winning the last meeting on Dec. 21, 2005 66-50 in Las Vegas. The Lady Blues have played the Aggies the last two times in Las Vegas. The other meeting in Las Vegas was on Dec. 17, 2003 with the Lady Blues winning by a 72-61 score. The first meeting in the series on Dec. 7, 2002 in Springfield, Mo., with Washburn winning by a 64-54 count.

LAST MEETING WITH CAMERON . . .

(Dec. 21, 2005) Brooke Ubelaker became the 18th player in Washburn Lady Blues history to score 1,000 points. Ubelaker, a 5-10 junior from Osborne, scored 27 in the No. 1 Lady Blues' 66-50 victory over Cameron on Wednesday in Las Vegas to raise her career total to 1,013 points. Megan Sullivan had a then career-high 18 points. Washburn shot 52 percent in the second half hitting 16 of 31 attempts from the field while holding Cameron to 8 of 28 from the field in the second half. Washburn was outrebounded by one (41 to 40).

LAST TIME OUT FOR CAMERON . . .

Nov. 15, 2006 - Cameron fell to Midwestern State 62-48 in Wichita Falls. The Aggies were held to 28 percent shooting for the game and hit only 1 of 10 3-point attempts. Tiffany Williams led the Aggies with 15 points on 4 of 11 shooting. Cameron was also forced into 31 turnovers.

LADY BLUES NOTES . . .

#3 Cindy Keeley - Named to MIAA's all-defensive team as a junior ... has been part of three MIAA regular season championships and two straight MIAA tournament championships.

#4 Amanda Holmes - Averaged 7.4 points as a starter for the Lady Blues in the final six games of the 2005-06 season after transferring from Texas Christian University.

#5 KG Hellen - Averaged 9.4 points and 3.3 rebounds as sophomore at Barton County starting 18 of 29 games.

#10 Jessica Aebi - Enters senior season 25th on WU all-time 3-point chart with 23 after one season.

#11 Renata Germano - Played in 33 games as a freshman at Southeastern Illinois College averaging 3.3 points and 2.9 rebounds per game.

#13 Jessica Mainz - A two-sport star at Washburn ... a unanimous first team all-MIAA forward on the soccer team leading the MIAA in goals with 12, has not practiced with Lady Blues as team is playing in NCAA Regionals this weekend. She was named the Most Valuable

Player of the MIAA in soccer in 2006 as a sophomore.

#15 Nikki Holmes - Was an honorable mention all-American at Tyler Junior College as a sophomore after averaging 12.2 points.

#20 Holly Henrichs - Has played in 55 games at Washburn and scored 27 points ... has three MIAA regular season championships.

#21 Sequorhea Stiger - Named WBCA/Kodak All-American after leading Trinity Valley in scoring with 17.1 points per game.

#23 Stephanie Wittman - Played in 19 games as a freshman at shooting guard.

#24 Karla Taillele - Was averaging 9.3 points in 16 games at Hutchinson Community College before suffering season-ending knee injury.

#25 Megan Sullivan - Returns to starting line up after missing final six games of the season after suffering knee injury ... led Lady Blues with 6.9 rebounds per game as a junior.

#32 Brooke Ubelaker - Needs one 3-pointer to become all-time leader with her 145th of her career ... set school record with 71 3-pointers as a junior ... ranks in top 20 of 18 offensive categories.

#33 Hope Gregory - Only true freshman on the squad ... was named honorable mention all-state and Class 3A player of the Year in Kansas.

LADY BLUES IN LEE ARENA . . .

In their 23rd season in Lee Arena, the Lady Blues are 275-54 (.836) overall at home. The longest winning streak was 44 games from Dec. 1, 1990 to March 20, 1993.

The Lady Blues were 15-0 in Lee Arena last season, out scoring opponents by a 78.2-49.9 average. The Lady Blues were 13-1 in Lee Arena in 2003-04, 16-1 in 2002-03 and 15-1 in 2001-02.

Washburn is 83-9 (.910) in home games under Ron McHenry. The Lady Blues have won 37 straight regular season games.

LADY BLUES HISTORY . . .

Washburn is 640-316 (.666 in 956 games) in its 38th season of intercollegiate action. Entering this season, the Lady Blues were 24th in Division II winning percentage and 18th in Division II wins.

LADY BLUES IN THE NATIONAL POLL . . .

(Oct. 30, 2006): The Washburn Lady Blues basketball team was ranked preseason No. 6 in the WBCA/USA Today/ESPN Top 25 Coaches Poll that was released Oct. 30. The Lady Blues were ranked No. 7 in the final WBCA poll of the 2005-06 season.

It was also the 61st straight WBCA National Poll that the Lady Blues have been ranked in the top 25 after being ranked in each poll the last three seasons, plus the last 15 of the 2002-03 season entering the poll on Dec. 11, 2002.

UP NEXT . . .

The Lady Blues will return home for the Premier Mortgage/AM 580 WIBW Holiday Classic in Lee Arena as they battle Cameron on Friday, Nov. 24 at 7:30 p.m. and Lynn (Fla.) on Saturday at 7:30 p.m. Other games include Missouri-Rolla vs Lynn on Friday at 5:30 p.m. and Cameron vs Missouri-Rolla on Saturday.

Numerical

3	Cindy Keeley	G	5-9	Sr.	Great Bend, Kan./Great Bend High School
4	Amanda Holmes	F	6-2	Jr.	Topeka, Kan./Texas Christian
5	KG Hellen	G	5-9	Jr.	Detroit, Mich./Barton County Community College
10	Jessica Aebi	G	5-7	Sr.	Enid, Okla./Northeastern Oklahoma A&M
11	Renata Germano	C	6-2	So.	Rio de Janero, Brazil/Southeastern Illinois College
13	Jessica Mainz	G	5-9	So.	Topeka, Kan./Shawnee Heights High School
15	Nikki Holmes	G	5-10	Sr.	Arlington, Texas/Tyler Junior College
20	Holly Henrichs	G	5-5	Sr.	Dodge City, Kan./Dodge City High School
21	Sequorhea Stiger	G	5-9	Jr.	Hopkinsville, Ky./Trinity Valley Community College
23	Stephanie Wittman	G	5-10	So.	Salina, Kan./Sacred Heart High School
24	Karla Taillele	G	5-6	Jr.	Laie, Hawaii/Hutchinson Community College
25	Megan Sullivan	F	6-1	Sr.	Spring Hill, Kan./Spring Hill High School
32	Brooke Ubelaker	F	5-11	Sr.	Osborne, Kan./Osborne High School
33	Hope Gregory	G	5-10	Fr.	Cheney, Kan./Cheney High School

Alphabetical

10	Jessica Aebi	G	5-7	Sr.	Enid, Okla./Northeastern Oklahoma A&M
11	Renata Germano	C	6-2	So.	Rio de Janero, Brazil/Southeastern Illinois College
33	Hope Gregory	G	5-10	Fr.	Cheney, Kan./Cheney High School
5	KG Hellen	G	5-9	Jr.	Detroit, Mich./Barton County Community College
20	Holly Henrichs	G	5-5	Sr.	Dodge City, Kan./Dodge City High School
4	Amanda Holmes	F	6-2	Jr.	Topeka, Kan./Texas Christian
15	Nikki Holmes	G	5-10	Sr.	Arlington, Texas/Tyler Junior College
3	Cindy Keeley	G	5-9	Sr.	Great Bend, Kan./Great Bend High School
13	Jessica Mainz	G	5-9	So.	Topeka, Kan./Shawnee Heights High School
21	Sequorhea Stiger	G	5-9	Jr.	Hopkinsville, Ky./Trinity Valley Community College
25	Megan Sullivan	F	6-1	Sr.	Spring Hill, Kan./Spring Hill High School
24	Karla Taillele	G	5-6	Jr.	Laie, Hawaii/Hutchinson Community College
32	Brooke Ubelaker	F	5-11	Sr.	Osborne, Kan./Osborne High School
23	Stephanie Wittman	G	5-10	So.	Salina, Kan./Sacred Heart High School

Head Coach: Ron McHenry (Washburn '84)

Washburn/career coaching record: 159-33 (.828)

Assistant Coaches: Dustin Odum and Toni Gross

Student Assistant Coaches: Carla Sintra, Lora Westling

Pronunciation Guide

10	Jessica Aebi	AB-ee
11	Renata Germano	Rah-NAH-ta GER-mah-no
13	Jessica Mainz	Maines
14	Karla Taillele	Tah-LAY-lay
21	Sequorhea Stiger	SAH-core-ee-ah STY-ger
32	Brooke Ubelaker	YOU-bah-laker

By Class

Seniors (6)	Sophomores (3)
Jessica Aebi	Jessica Mainz
Holly Henrichs	Stephanie Wittman
Nikki Holmes	Renata Germano
Cindy Keeley	Freshman (1)
Megan Sullivan	Hope Gregory
Brooke Ubelaker	
Juniors (4)	
KG Hellen	
Amanda Holmes	
Sequorhea Stiger	
Karla Taillele	

Geographical Breakdown**United States**

Kansas (8)	Hawaii (1)
Holly Henrichs (Dodge City)	Karla Taillele (Laie)
Amanda Holmes (Topeka)	Kentucky (1)
Cindy Keeley (Great Bend)	Sequorhea Stiger (Hopkinsville)
Jessica Mainz (Topeka)	Oklahoma (1)
Megan Sullivan (Spring Hill)	Jessica Aebi (Enid)
Brooke Ubelaker (Osborne)	Texas (1)
Stephanie Wittman (Salina)	Nikki Holmes (Arlington)
Hope Gregory (Cheney)	
Michigan (1)	
KG Hellen (Detroit)	

South America

Brazil (1)
Renata Germano (Rio de Janero)

2005-06 Season Statistics (32-1, 16-0 MIAA, 17-1 Home, 8-0 Away, 7-0 Neutral)

Name	GP	GS	Min	Avg	FG	FGA	PCT	3FG	3FGA	PCT	FT	FTA	PCT	OFF	DEF	TOT	AVG	PF	FO	A	TO	BLK	ST	PTS	AVG
Harris,Jennifer	33	33	1023	31.0	295	661	.446	57	198	.288	150	203	.739	53	140	193	5.8	47	0	168	90	20	96	797	24.2
Ubelaker,Brooke	33	33	962	29.2	197	401	.491	71	189	.376	82	102	.804	45	134	179	5.4	56	0	54	43	14	43	547	16.6
Sullivan,Megan	27	27	629	23.3	106	203	.522	0	0	.000	41	65	.631	83	103	186	6.9	53	0	32	41	22	20	253	9.4
Keeley,Cindy	33	33	871	26.4	71	134	.530	17	49	.347	37	49	.755	56	72	128	3.9	72	1	76	26	12	50	196	5.9
Samardziska,Bojana	33	0	441	13.4	73	150	.487	0	0	.000	49	74	.662	39	71	110	3.3	59	0	11	44	46	13	195	5.9
Holmes,Amanda	33	6	492	14.9	65	150	.433	7	27	.259	47	74	.635	48	100	148	4.5	72	2	30	50	26	28	184	5.6
Aebi,Jessica	33	0	459	13.9	57	116	.491	23	54	.426	23	29	.793	3	31	34	1.0	23	0	52	38	3	22	160	4.8
Roadhouse,April	33	33	995	30.2	44	96	.458	16	47	.340	40	50	.800	16	93	109	3.3	58	1	149	63	22	73	144	4.4
McHenry,Dani	33	0	409	12.4	27	73	.370	9	32	.281	19	24	.792	24	47	71	2.2	40	1	42	15	9	16	82	2.5
Mainz,Jessica	22	0	186	8.5	19	34	.559	0	3	.000	16	22	.727	20	23	43	2.0	10	0	19	8	2	22	54	2.5
Wittman,Stephanie	19	0	78	4.1	13	30	.433	5	10	.500	10	12	.833	2	12	14	0.7	9	0	14	8	3	0	41	2.2
Hooker,Kaydi	18	0	46	2.6	3	9	.333	2	4	.500	2	2	1.000	7	6	13	0.7	8	0	5	9	1	1	10	0.6
Henrichs,Holly	19	0	59	3.1	2	6	.333	0	2	.000	5	12	.417	0	2	2	0.1	5	0	2	6	1	3	9	0.5
TEAM														51	77	128	3.9	0			5				
Total	33				972	2063	.471	207	615	.337	521	718	.726	447	911	1358	41.2	512	5	654	446	181	387	2672	81.0
Opponents	33				641	1829	.350	157	501	.313	410	556	.737	344	725	1069	32.4	579	13	333	646	83	194	1849	56.0

2005-06 MIAA Games (16-0 overall - 8-0 Home, 8-0 Away)

Name	GP	GS	Min	Avg	FG	FGA	PCT	3FG	3FGA	PCT	FT	FTA	PCT	OFF	DEF	TOT	AVG	PF	FO	A	TO	BLK	ST	PTS	AVG
Harris,Jennifer	16	16	528	33.0	141	327	.431	31	106	.292	90	116	.776	25	54	79	4.9	26	0	75	47	7	47	403	25.2
Ubelaker,Brooke	16	16	489	30.6	92	193	.477	36	95	.379	41	54	.759	21	72	93	5.8	30	0	26	18	7	15	261	16.3
Sullivan,Megan	16	16	394	24.6	53	115	.461	0	0	.000	29	45	.644	58	60	118	7.4	38	0	22	29	9	11	135	8.4
Keeley,Cindy	16	16	467	29.2	41	78	.526	10	28	.357	21	25	.840	33	36	69	4.3	34	0	34	14	9	22	113	7.1
Roadhouse,April	16	16	524	32.8	32	63	.508	12	32	.375	21	28	.750	10	43	53	3.3	36	1	77	30	15	40	97	6.1
Holmes,Amanda	16	0	204	12.8	27	62	.435	2	11	.182	17	27	.630	26	38	64	4.0	28	0	13	22	10	11	73	4.6
Aebi,Jessica	16	0	214	13.4	23	52	.442	9	26	.346	9	13	.692	0	14	14	0.9	8	0	20	21	1	10	64	4.0
Samardziska,Bojana	16	0	157	9.8	23	49	.469	0	0	.000	10	13	.769	9	25	34	2.1	22	0	1	13	10	4	56	3.5
McHenry,Dani	16	0	173	10.8	9	30	.300	3	14	.214	8	10	.800	8	17	25	1.6	19	0	21	9	3	4	29	1.8
Mainz,Jessica	7	0	36	5.1	4	8	.500	0	0	.000	3	4	.750	3	10	13	1.9	3	0	2	2	0	2	11	1.6
Wittman,Stephanie	7	0	16	2.3	3	5	.600	1	2	.500	4	4	1.000	1	2	3	0.4	2	0	3	1	1	0	11	1.6
Hooker,Kaydi	6	0	10	1.7	1	2	.500	1	2	.500	2	2	1.000	1	0	1	0.2	1	0	1	3	0	1	5	0.8
Henrichs,Holly	7	0	13	1.9	1	3	.333	0	1	.000	0	2	.000	0	0	0	0.0	0	0	2	1	0	2	2	0.3
TEAM														23	37	60	3.8	0			5				
Total	16				450	987	.456	105	317	.331	255	343	.743	218	408	626	39.1	247	1	297	215	72	169	1260	78.8
Opponents	16				345	886	.389	82	244	.336	209	278	.752	167	356	523	32.7	278	7	175	294	36	98	981	61.3

2005-06 Home Games (17-1)

Name	GP	GS	Min	Avg	FG	FGA	PCT	3FG	3FGA	PCT	FT	FTA	PCT	OFF	DEF	TOT	AVG	PF	FO	A	TO	BLK	ST	PTS	AVG
Harris,Jennifer	18	18	537	29.8	161	348	.463	28	98	.286	93	125	.744	31	77	108	6.0	17	0	96	48	14	55	443	24.6
Ubelaker,Brooke	18	18	500	27.8	96	204	.471	35	102	.343	46	56	.821	17	66	83	4.6	31	0	28	24	7	21	273	15.2
Sullivan,Megan	15	15	356	23.7	57	107	.533	0	0	.000	20	36	.556	47	52	99	6.6	31	0	21	24	10	15	134	8.9
Keeley,Cindy	18	18	464	25.8	47	85	.553	12	30	.400	27	33	.818	29	44	73	4.1	35	1	41	18	7	33	133	7.4
Samardziska,Bojana	18	0	267	14.8	49	96	.510	0	0	.000	30	40	.750	24	45	69	3.8	31	0	10	27	30	12	128	7.1
Holmes,Amanda	18	3	270	15.0	37	88	.420	6	22	.273	20	29	.690	27	52	79	4.4	37	1	17	27	17	22	100	5.6
Aebi,Jessica	18	0	263	14.6	35	67	.522	14	33	.424	16	18	.889	0	19	19	1.1	12	0	32	22	2	16	100	5.6
Mainz,Jessica	13	0	132	10.2	17	29	.586	0	2	.000	12	18	.667	14	17	31	2.4	7	0	14	7	1	15	46	3.5
Roadhouse,April	18	18	507	28.2	21	43	.488	5	20	.250	15	17	.882	7	44	51	2.8	33	1	72	32	14	47	62	3.4
McHenry,Dani	18	0	232	12.9	18	47	.383	4	18	.222	16	20	.800	17	26	43	2.4	21	0	31	7	6	12	56	3.1
Wittman,Stephanie	11	0	50	4.5	10	19	.526	4	6	.667	6	8	.750	0	7	7	0.6	6	0	9	5	2	0	30	2.7
Hooker,Kaydi	11	0	32	2.9	3	8	.375	2	4	.500	2	2	1.000	5	6	11	1.0	4	0	4	5	1	1	10	0.9
Henrichs,Holly	11	0	40	3.6	0	4	.000	0	2	.000	2	8	.250	0	2	2	0.2	5	0	0	4	1	2	2	0.2
TEAM														30	39	69	3.8	0			1				
Total	18				551	1145	.481	110	337	.326	305	410	.744	248	496	744	41.3	270	3	375	251	112	251	1517	84.3
Opponents	18				348	1003	.347	84	284	.296	220	289	.761	186	388	574	31.9	327	8	155	391	41	115	1000	55.6

Away and Neutral Site Games (15-0 overall - 8-0 Away, 7-0 Neutral Site)

Name	GP	GS	Min	Avg	FG	FGA	PCT	3FG	3FGA	PCT	FT	FTA	PCT	OFF	DEF	TOT	AVG	PF	FO	A	TO	BLK	ST	PTS	AVG
Harris,Jennifer	15	15	486	32.4	134	313	.428	29	100	.290	57	78	.731	22	63	85	5.7	30	0	72	42	6	41	354	23.6
Ubelaker,Brooke	15	15	462	30.8	101	197	.513	36	87	.414	36	46	.783	28	68	96	6.4	25	0	26	19	7	22	274	18.3
Sullivan,Megan	12	12	273	22.8	49	96	.510	0	0	.000	21	29	.724	36	51	87	7.3	22	0	11	17	12	5	119	9.9
Holmes,Amanda	15	3	222	14.8	28	62	.452	1	5	.200	27	45	.600	21	48	69	4.6	35	1	13	23	9	6	84	5.6
Roadhouse,April	15	15	488	32.5	23	53	.434	11	27	.407	25	33	.758	9	49	58	3.9	25	0	77	31	8	26	82	5.5
Samardziska,Bojana	15	0	174	11.6	24	54	.444	0	0	.000	19	34	.559	15	26	41	2.7	28	0	1	17	16	1	67	4.5
Keeley,Cindy	15	15	407	27.1	24	49	.490	5	19	.263	10	16	.625	27	28	55	3.7	37	0	35	8	5	17	63	4.2
Aebi,Jessica	15	0	196	13.1	22	49	.449	9	21	.429	7	11	.636	3	12	15	1.0	11	0	20	16	1	6	60	4.0
McHenry,Dani	15	0	177	11.8	9	26	.346	5	14	.357	3	4	.750	7	21	28	1.9	19	1	11	8	3	4	26	1.7
Wittman,Stephanie	8	0	28	3.5	3	11	.273	1	4	.250	4	4	1.000	2	5	7	0.9	3	0	5	3	1	0	11	1.4
Mainz,Jessica	9	0	54	6.0	2	5	.400	0	1	.000	4	4	1.000	6	6	12	1.3	3	0	5	1	1	7	8	0.9
Henrichs,Holly	8	0	19	2.4	2	2	1.000	0	0	.000	3	4	.750	0	0	0	0.0	0	0	2	2	0	1	7	0.9
Hooker,Kaydi	7	0	14	2.0	0	1	.000	0	0	.000	0	0	.000	2	0	2	0.3	4	0	1	4	0	0	0	0.0
TEAM														21	38	59	3.9	0			4				
Total	15				421	918	.459	97	278	.349	216	308	.701	199	415	614	40.9	242	2	279	69	136	1155	77.0	
Opponents	15				293	826	.355	73	217	.336	190	267	.712	158	337	495	33.0	252	5	178	255	42	79	849	56.6

2005-06 Season Statistics (32-1, 16-0 MIAA, 17-1 Home, 8-0 Away, 7-0 Neutral)

Date	Opponent	W/L	Score	Att.	High Points	High Rebounds
11/18/05	! vs Central Oklahoma	W	96-59	250	(27)Ubelaker,Brooke	(7)Holmes,Amanda
11/19/05	! vs SW Oklahoma State	W	92-40	240	(30)Harris,Jennifer	(9)Ubelaker,Brooke
11/24/05	@ CSU-STANISLAUS	W	102-43	2050	(18)Harris,Jennifer	(8)Keeley,Cindy
						(8)Harris,Jennifer
11/25/05	@ WEST VIRGINA TECH	W	86-50	1475	(16)Harris,Jennifer	(10)Harris,Jennifer
11/28/05	BAKER	W	93-38	1325	(20)Harris,Jennifer	(7)Harris,Jennifer
						(7)Samardziska,Bojana
11/30/05	PANHANDLE STATE	W	94-53	1825	(19)Harris,Jennifer	(8)Sullivan,Megan
12/10/05	* CENTRAL MO. ST.	W	80-73	3050	(27)Ubelaker,Brooke	(8)Ubelaker,Brooke
						(8)Sullivan,Megan
12/14/05	BENEDICTINE	W	95-52	2350	(31)Ubelaker,Brooke	(7)Samardziska,Bojana
12/17/05	DRURY	W	89-66	2760	(33)Harris,Jennifer	(10)McHenry,Dani
12/20/05	\$ vs West Texas A&M	W	63-52	250	(27)Harris,Jennifer	(9)Ubelaker,Brooke
12/21/05	\$ vs Cameron	W	66-50	200	(27)Ubelaker,Brooke	(8)Ubelaker,Brooke
12/30/05	* at Truman	W	74-64	315	(31)Ubelaker,Brooke	(10)Sullivan,Megan
01/01/06	MISSOURI VALLEY	W	109-28	1850	(16)Sullivan,Megan	(11)Holmes,Amanda
01/04/06	* NORTHWEST MISSOURI	W	84-71	2750	(39)Harris,Jennifer	(6)Sullivan,Megan
01/11/06	* at Emporia State	W	72-70	4895	(28)Harris,Jennifer	(10)Sullivan,Megan
01/14/06	* SOUTHWEST BAPTIST	W	95-49	2975	(19)Keeley,Cindy	(12)Samardziska,Bojana
01/18/06	* PITTSBURG STATE	W	74-54	2500	(16)Harris,Jennifer	(7)Harris,Jennifer
						(7)Sullivan,Megan
01/21/06	* at Missouri Southern	W	70-45	1210	(17)Harris,Jennifer	(11)Sullivan,Megan
01/25/06	* at Missouri Western	W	74-66	815	(33)Harris,Jennifer	(10)Ubelaker,Brooke
01/28/06	* TRUMAN	W	77-61	3225	(27)Harris,Jennifer	(7)Keeley,Cindy
02/01/06	* MISSOURI WESTERN	W	84-71	2800	(35)Harris,Jennifer	(9)Ubelaker,Brooke
02/04/06	* MISSOURI SOUTHERN	WOT	66-64	3720	(28)Harris,Jennifer	(14)Sullivan,Megan
02/08/06	* at Pittsburg State	W	95-65	747	(32)Harris,Jennifer	(6)Holmes,Amanda
						(6)Sullivan,Megan
02/11/06	* at Southwest Baptist	W	84-47	1389	(28)Harris,Jennifer	(9)Sullivan,Megan
02/15/06	* EMPORIA STATE	W	73-57	4137	(32)Harris,Jennifer	(7)Harris,Jennifer
02/22/06	* at Northwest Missouri	W	82-61	1000	(23)Ubelaker,Brooke	(8)Roadhouse,April
02/25/06	* at Central Missouri State	W	76-63	2850	(35)Harris,Jennifer	(9)Holmes,Amanda
03/02/06	# vs Truman	W	63-36	2865	(18)Ubelaker,Brooke	(12)Samardziska,Bojana
03/04/06	# vs Missouri Western	W	73-60	1777	(27)Harris,Jennifer	(9)Roadhouse,April
03/05/06	# vs Central Missouri State	W	75-71	2254	(33)Harris,Jennifer	(7)Ubelaker,Brooke
03/10/06	^ ST. MARY'S	W	92-58	3535	(28)Harris,Jennifer	(8)Harris,Jennifer
03/11/06	^ CENTRAL MO. ST.	W	65-51	3415	(33)Harris,Jennifer	(12)Harris,Jennifer
03/13/06	^ EMPORIA STATE	LOT	59-61	4024	(32)Harris,Jennifer	(9)Harris,Jennifer

! - Missouri Southern Invitational - Joplin, Mo.

\$ - South Central Regional Challenge - Las Vegas, Nev.

- MIAA Championship Tournament - Kansas City, Mo.

@ - WIBW Radio Holiday Classic - Topeka, Kan.

* - MIAA Game

^ - NCAA South Central Regional - Topeka, Kan.

Lady Blues lead NCAA Division II in attendance for the 2005-06 season

The Washburn Lady Blues led NCAA Division II in attendance with an average attendance of 2,764 per game.

That total was the 39th highest in all of NCAA Women's Basketball and only 110 per game behind Kansas, who ranked 37th in Division I attendance per game.

NCAA Division II 2005-06 Attendance Leaders

	Games	Attendance	Avg.
1. Washburn	18	49,766	2,764
2. Northern State	16	43,654	2,728
3. Emporia State	13	34,898	2,684
4. North Dakota	20	44,604	2,230
5. Angelo State	14	27,198	1,942
6. Drury	16	29,983	1,873
7. St. Cloud State	14	25,442	1,817
8. Augustana (S.D.)	16	27,614	1,725
9. Winston-Salem	13	20,935	1,610
10. Fort Hays State	15	24,115	1,607

Attendance	Dates	Attendance	Average
HOME	18	49766	2765
AWAY	8	13221	1653
NEUTRAL	7	7836	1119
TOTAL	33	70823	2146

Washburn record when...

Leading at the half	28-1
Trailing at the half	3-0
Tied at the half	1-0
Leading with 5:00 remaining	31-0
Trailing with 5:00 remaining	1-0
Tied with 5:00 remaining	0-0
Playing in overtime games	0-1
Outrebounding opponents	25-0
Opponents outrebounding	7-1
Having same rebound total	0-0
Having more steals	30-1
Opponent has more steals	1-0
Having same steal total	1-0
Having more blocks	25-1
Opponent has more blocks	3-0
Having same blocks total as opponent	4-0
Having more fouls	11-0
Opponent has more fouls	18-1
Having same foul total as opponent	3-0
Turning the ball over more	2-0
Opponent turns the ball over more	28-1
Having same turnover total as opponent	2-0
Making more free throws than opponents	20-0
Making less free throws than opponents	11-1
Making same number of free throws as opponents	1-0
More free throws attempts than opponents	22-0
Less free throws attempts than opponents	10-1
Having same free throw attempts as opponent	0-0
Hitting more 3-point field goals than opponents	17-1
Hitting less 3-point field goals than opponents	12-0
Hitting same 3-point goals as opponents	3-0
Shooting more 3-point attempts than opponents	19-1
Shooting less 3-point attempts than opponents	10-0
Same 3-point attempts as opponents	3-0
Shooting 50 percent or better	17-0
Shooting less than 50 percent	15-1
Opponent shoots 50 percent or better	0-0
Opponent shoots less than 50 percent	32-1
Shooting better than opponent	26-0
Shooting worse than opponent	6-1
Shooting same as opponent	0-0
Scoring 50 or less	0-0
Scoring between 51-60	0-1
Scoring between 61-70	6-0
Scoring between 71-80	10-0
Scoring between 81-90	6-0
Scoring between 91-100	8-0
Scoring more than 100	2-0
Opponent scores 50 or less	10-0
Opponent scores between 51-60	9-1
Opponent scores between 61-70	9-0
Opponent scores between 71-80	4-0
Opponent scores between 81-90	0-0
Opponent scores between 91-100	0-0
Opponent scores more than 100	0-0
In November	6-0
In December	6-0
In January	8-0
In February	7-0
In March	5-1
On Monday	1-1
On Tuesday	1-0
On Wednesday	11-0
On Thursday	2-0
On Friday	4-0
On Saturday	11-0
On Sunday	2-0

Double Figure Scoring

Jennifer Harris	32
Brooke Ubelaker	27
Megan Sullivan	11
Bojana Samardziska	9
Jessica Aebi	7
Cindy Keeley	6
Amanda Holmes	6
April Roadhouse	5
Jessica Mainz	2
Dani McHenry	1

Double Figure Rebounding

Megan Sullivan	4
Brooke Ubelaker	1
Jennifer Harris	3
Bojana Samardziska	2
Amanda Holmes	1
Dani McHenry	1

Double Figure Assists

Jennifer Harris	2
April Roadhouse	1

Double Doubles Season

Jennifer Harris	4
Megan Sullivan	2
Bojana Samardziska	2
April Roadhouse	1
Brooke Ubelaker	1
Amanda Holmes	1

Double Doubles Career

Jennifer Harris	6
Brooke Ubelaker	5
Megan Sullivan	2
Bojana Samardziska	2
April Roadhouse	1
Amanda Holmes	1

20-Point Games Season

Brooke Ubelaker	7
Jennifer Harris	7
Megan Sullivan	1

20-Point Games Career

Jennifer Harris	15
Brooke Ubelaker	10
Megan Sullivan	1

30-Point Games Season

Jennifer Harris	11
Brooke Ubelaker	2

30-Point Games Career

Jennifer Harris	12
Brooke Ubelaker	2

Starting lineups used during 2005-06 season

(W-L)	F	F	G	G	G
(27-0)	Sullivan	Ubelaker	Keeley	Roadhouse	Harris
(5-1)	Holmes	Ubelaker	Keeley	Roadhouse	Harris

Win/Loss Margin

	1	2	3	4	5	6	7	8	9	10	11-15	16-29	30+
Wins	-	2	-	1	-	-	1	1	-	1	5	8	12
Losses	-	1	-	-	-	-	-	-	-	-	-	-	-

Free throws last 5:00 of game

3	Cindy Keeley	9-13 (.692)
4	Amanda Holmes	8-13 (.722)
5	Kaydi Hooker	2-2 (1.000)
10	Jessica Aebi	9-10 (.900)
11	April Roadhouse	18-24 (.750)
13	Jessica Mainz	8-10 (.800)
15	Bojana Samardziska	10-11 (1.000)
20	Holly Henrichs	5-12 (.417)
21	Jennifer Harris	41-54 (.759)
23	Stephanie Wittman	8-8 (1.000)
25	Megan Sullivan	9-14 (.643)
32	Brooke Ubelaker	14-20 (.700)
43	Dani McHenry	2-2 (1.000)
Lady Blues as a team		143-193 (.741)
Opponents		98-137 (.715)

Point Figures

Biggest halftime lead	45 vs Missouri Valley (1/1/06)
Biggest halftime deficit	9 vs Central Missouri (3/11/06)
Biggest lead	81 vs Missouri Valley (1/1/06)
Biggest deficit	14 at Emporia State (1/11/06)

Streaking Lady Blues 2005-06

2005-06 winning	(longest - 32)
2005-06 losing	1 (final game of 2005-06 season)

Washburn Lady Blues ...

Consecutive games with a 3-pointer	75
last game without, 2/25/04 vs Emporia State	
100-point games	8
Consecutive games with opponents under 100	219
Season openers	28-9
Season openers under Ron McHenry	6-0
Home openers in Lee Arena	19-3
Last overtime game	3/13/06 vs Emporia State, L 61-59 in South Central Regional Final

Individual Highs

Points

- 39 Jennifer Harris vs Northwest Missouri (Jan. 4)
35 Jennifer Harris vs Missouri Western (Feb. 1)

Rebounds

- 14 Megan Sullivan vs Missouri Southern (Feb. 4)
12 Jennifer Harris vs Central Missouri (March 11)
12 Bojana Samardziska vs Truman (March 2)
12 Bojana Samardziska vs Southwest Baptist (Jan. 14)

Field Goals Made

- 14 Jennifer Harris vs Northwest Missouri (Jan. 4)
14 Jennifer Harris vs Central Missouri (Feb. 25)

Field Goals Attempted

- 30 Jennifer Harris vs Emporia State (March 13)
30 Jennifer Harris vs Missouri Southern (Feb. 4)

Free Throws Made

- 30 Jennifer Harris vs Missouri Western (Feb. 1)
30 Bojana Samardziska vs Okla. Panhandle (Nov. 30)

Free Throws Attempted

- 15 Jennifer Harris vs Missouri Western (Feb. 1)
14 Jennifer Harris vs Emporia State (Feb. 15)

3-Point Field Goals Made

- 6 Brooke Ubelaker at Northwest Missouri (Feb. 22)
5 Jennifer Harris at Pittsburg State (Feb. 8)
5 Jennifer Harris at Emporia State (Jan. 11)
5 Brooke Ubelaker vs Cameron (Dec. 21)
5 Brooke Ubelaker vs Central Missouri (Dec. 10)
5 Brooke Ubelaker vs Southwestern Okla. (Nov. 19)

3-Point Field Goals Attempted

- 13 Jennifer Harris at Emporia State (Jan. 11)
12 Jennifer Harris vs Missouri Southern (Feb. 4)
12 Jennifer Harris vs Northwest Missouri (Jan. 4)
12 Brooke Ubelaker vs Cameron (Dec. 21)

Assists

- 12 Jennifer Harris vs Benedictine (Dec. 14)
10 April Roadhouse at Pittsburg State (Feb. 8)
10 Jennifer Harris at Truman (Dec. 30)

Steals

- 6 Amanda Holmes vs Missouri Valley (Jan. 1)
6 April Roadhouse vs Central Mo. St. (Dec. 10)

Blocked Shots

- 9 Bojana Samardziska vs Benedictine (Dec. 14)
6 Bojana Samardziska vs Truman (March 2)

Team Superlatives

Washburn

Total Points

- High: 109 vs Missouri Valley (Jan. 1)
Low: 59 vs Emporia State (March 13)

Field Goals Made

- High: 45 vs Missouri Valley (Jan. 1)
Low: 21 vs Pittsburg State (Jan. 18)

Field Goals Attempted

- High: 79 vs Missouri Valley (Jan. 1)
Low: 55 vs Drury (Dec. 17)

Field Goal Percentage

- High: .614 (43-70) vs Baker (Nov. 28)
Low: .324 (22-68) vs Missouri Southern (Feb. 4)

3-Point Field Goals Made

- High: 13 vs St. Mary's (March 10)
Low: 2 vs Baker (Nov. 28)

3-Point Field Goals Attempted

- High: 30 vs Missouri Southern (Feb. 4)
Low: 10 vs Baker (Nov. 28)

Free Throws Made

- High: 28 vs Pittsburg State (Jan. 18)
28 vs CSU-Stanislaus (Nov. 24)
Low: 5 vs Baker (Nov. 28)

Free Throws Attempted

- High: 39 vs CSU-Stanislaus (Nov. 24)
Low: 8 vs Benedictine (Dec. 14)

Free Throw Percentage

- High: .929 (13-14) vs W. Virginia Tech (Nov. 25)
Low: .500 (5-10) vs Baker (Nov. 28)

Rebounds

- High: 52 vs CSU-Stanislaus (Nov. 24)
Low: 31 vs Missouri Western (Feb. 1)

Assists

- High: 34 vs Missouri Valley (Jan. 1)
Low: 9 vs Emporia State (March 13)

Turnovers

- High: 21 vs Emporia State (March 13)
Low: 10 vs Missouri Valley (Jan. 1)
10 vs Northwest Missouri (Jan. 4)

Steals

- High: 30 vs Missouri Valley (Jan. 1)
Low: 8 vs Missouri Western (Feb. 1)

Blocked Shots

- High: 15 vs Benedictine (Dec. 14)
Low: 1 vs Truman (Jan. 28)

Opponents

Total Points

- High: 73 vs Central Mo. St. (Dec. 10)
Low: 28 vs Missouri Valley (Jan. 1)

Field Goals Made

- High: 29 vs Missouri Western (Feb. 1)
Low: 11 vs Missouri Valley (Jan. 1)

Field Goals Attempted

- High: 67 vs CSU-Stanislaus (Nov. 24)
Low: 39 vs Central Mo. St. (March 11)

Field Goal Percentage

- High: .483 (29-60) vs Missouri Western (Feb. 1)
Low: .224 (15-67) vs CSU-Stanislaus (Nov. 24)

3-Point Field Goals Made

- High: 8 vs St. Mary's (March 10)
8 vs Central Mo. St. (Dec. 10)
8 vs Okla. Panhandle State (Nov. 30)
Low: 0 vs Emporia State (Feb. 15)

3-Point Field Goals Attempted

- High: 26 vs St. Mary's (March 10)
26 vs CSU-Stanislaus (Nov. 24)
Low: 5 vs Missouri Valley (Jan. 1)

Free Throws Made

- High: 21 vs Pittsburg State (Jan. 18)
Low: 3 vs Baker (Nov. 28)

Free Throws Attempted

- High: 25 vs Pittsburg State (Jan. 18)
Low: 5 vs Baker (Nov. 28)

Free Throw Percentage

- High: 1.000 (18-18) vs St. Mary's (March 10)
Low: .357 (5-14) vs Missouri Valley (Jan. 1)

Rebounds

- High: 42 vs Emporia State (March 13)
Low: 22 vs Okla. Panhandle State (Nov. 30)

Assists

- High: 16 vs Missouri Western (Feb. 1)
Low: 5 vs St. Mary's (March 10)

Turnovers

- High: 36 vs Missouri Valley (Jan. 1)
Low: 16 vs Drury (Dec. 17)
16 vs Northwest Missouri (Jan. 4)
16 vs St. Mary's (March 10)

Steals

- High: 11 vs Southwest Baptist (Jan. 14)
11 vs Central Mo. St. (Dec. 10)
Low: 3 vs CSU-Stanislaus (Nov. 24)
3 vs West Virginia Tech (Nov. 25)
3 vs Missouri Southern (Feb. 4)
3 vs Emporia State (Feb. 15)

Blocked Shots

- High: 5 vs Missouri Western (Feb. 1)
Low: 0 vs Missouri Southern (Feb. 4)

Individual Double-Doubles in 2005-06

Amanda Holmes (1)

- 13 points, 11 rebounds vs Missouri Valley (Jan. 1)

April Roadhouse (1)

- 11 points, 10 assists at Pittsburg State (Feb. 8)

Bojana Samardziska (2)

- 13 points, 12 rebounds vs Southwest Baptist (Jan. 14)
13 points, 12 rebounds vs Truman (March 2)

Megan Sullivan (2)

- 20 points, 10 rebounds at Truman (Dec. 30)
12 points, 14 rebounds vs Missouri Southern (Feb. 4)

Jennifer Harris (4)

- 16 points, 10 rebounds vs West Virginia Tech (Nov. 25)
25 points, 12 assists vs Benedictine (Dec. 14)
15 points, 11 rebounds vs Truman (March 2)
33 points, 12 rebounds vs Central Missouri (March 11)

Brooke Ubelaker (2)

- 17 points, 10 rebounds at Missouri Western (Jan. 25)
12 points, 14 rebounds vs Missouri Southern (Feb. 4)



Jennifer Harris

**2005-06 Season Game By Game Statistics (32-1, 16-0 MIAA, 17-1 Home, 8-0 Away, 7-0 Neutral)**

	Score	W/L	FG	FGA	Pct	3FG	FGA	Pct	FT	FTA	Pct	Off	Def	Tot	Avg	PF	A	TO	Blk	Sd	Pts	Avg
vs Central Oklahoma	59		18	56	.321	2	10	.200	21	27	.778	10	16	26	26.0	22	12	17	5	9	59	59.0
Washburn	96	W	35	63	.556	6	18	.333	20	25	.800	14	31	45	45.0	22	29	18	5	11	96	96.0
vs SW Oklahoma State	40		12	57	.211	1	11	.091	15	24	.625	14	17	31	28.5	19	7	14	2	4	40	49.5
Washburn	92	W	29	55	.527	10	20	.500	24	28	.857	12	36	48	46.5	21	20	14	10	7	92	94.0
CSU-Stanislaus	43		15	67	.224	3	26	.115	10	11	.909	13	17	30	29.0	28	7	22	2	3	43	47.3
Washburn	102	W	35	63	.556	4	13	.308	28	39	.718	13	39	52	48.3	17	25	12	11	9	102	96.7
West Virginia Tech	50		17	54	.315	6	16	.375	10	16	.625	11	17	28	28.8	15	8	21	3	3	50	48.0
Washburn	86	W	34	67	.507	5	12	.417	13	14	.929	15	29	44	47.2	16	23	13	5	10	86	94.0
Baker	38		15	54	.278	5	20	.250	3	5	.600	9	15	24	27.8	12	9	24	2	5	38	46.0
Washburn	93	W	43	70	.614	2	10	.200	5	10	.500	16	31	47	47.2	10	33	13	8	15	93	93.8
Oklahoma Panhandle	53		18	50	.360	8	19	.421	9	10	.900	5	17	22	26.8	22	11	28	2	5	53	47.2
Washburn	94	W	30	66	.455	7	17	.412	27	35	.771	20	27	47	47.2	9	23	14	7	18	94	93.8
Central Missouri	73		24	55	.436	8	18	.444	17	22	.773	9	22	31	27.4	20	10	20	3	11	73	50.9
Washburn	80	W	24	61	.393	8	21	.381	24	29	.828	16	23	39	46.0	15	17	14	5	17	80	91.9
Benedictine	52		19	60	.317	4	13	.308	10	12	.833	14	22	36	28.5	7	12	27	1	10	52	51.0
Washburn	95	W	39	70	.557	10	25	.400	7	8	.875	9	29	38	45.0	9	29	18	15	16	95	92.2
No. 2 Drury	66		21	64	.328	6	20	.300	18	23	.783	12	18	30	28.7	26	7	16	1	8	66	52.7
Washburn	89	W	29	55	.527	4	12	.333	27	35	.771	12	33	45	45.0	22	16	17	8	11	89	91.9
vs No. 17 West Texas A&M	52		17	50	.340	0	7	.000	18	30	.600	14	28	42	30.0	23	11	25	8	9	52	52.6
Washburn	63	W	21	61	.344	2	18	.111	19	25	.760	14	25	39	44.4	22	14	17	3	13	63	89.0
vs Cameron	50		19	55	.345	3	15	.200	9	12	.750	12	29	41	31.0	9	13	15	6	1	50	52.4
Washburn	66	W	29	69	.420	6	21	.286	2	7	.286	15	25	40	44.0	18	22	6	1	7	66	86.9
at Truman	64		22	53	.415	9	20	.450	11	15	.733	8	17	25	30.5	17	14	21	1	6	64	53.3
Washburn	74	W	29	57	.509	3	12	.250	13	19	.684	12	25	37	43.4	15	26	18	2	11	74	85.8
Missouri Valley	28		11	45	.244	1	5	.200	5	14	.357	6	21	27	30.2	14	6	36	3	5	28	51.4
Washburn	109	W	45	79	.570	7	14	.500	12	23	.522	18	31	49	43.8	12	34	10	4	30	109	87.6
Northwest Missouri	71		25	53	.472	6	16	.375	15	24	.625	11	19	30	30.2	14	7	16	1	5	71	52.8
Washburn	84	W	32	62	.516	7	25	.280	13	15	.867	12	22	34	43.1	18	18	10	5	10	84	87.4
at No. 3 Emporia State	70		23	56	.411	6	13	.462	18	20	.900	10	28	38	30.7	19	20	17	3	6	70	53.9
Washburn	72	W	25	65	.385	10	24	.417	12	17	.706	15	21	36	42.7	12	17	12	7	9	72	86.3
Southwest Baptist	49		18	65	.277	4	14	.286	9	16	.563	16	18	34	30.9	16	11	19	2	11	49	53.6
Washburn	95	W	36	62	.581	8	20	.400	15	18	.833	9	35	44	42.8	15	27	18	9	14	95	86.9
Pittsburg State	54		16	52	.308	1	8	.125	21	25	.840	9	24	33	31.1	22	9	20	2	10	54	53.6
Washburn	74	W	21	60	.350	4	17	.235	28	34	.824	16	29	45	42.9	19	14	15	10	13	74	86.1
at Missouri Southern	45		13	51	.255	3	15	.200	16	23	.696	10	19	29	30.9	19	7	19	2	5	45	53.2
Washburn	70	W	26	51	.510	4	15	.267	14	24	.583	10	32	42	42.8	19	19	17	5	8	70	85.2
at Missouri Western	66		28	66	.424	6	22	.273	4	9	.444	11	24	35	31.2	19	11	14	2	3	66	53.8
Washburn	74	W	27	55	.491	5	14	.357	15	24	.625	9	29	38	42.6	8	16	14	3	5	74	84.6
Truman	61		21	51	.412	5	19	.263	14	15	.933	9	26	35	31.4	16	8	21	3	6	61	54.2
Washburn	77	W	31	69	.449	3	19	.158	12	21	.571	18	20	38	42.3	17	19	11	1	17	77	84.2
Missouri Western	71		29	60	.483	5	15	.333	8	11	.727	9	26	35	31.5	22	16	20	5	6	71	55.0
Washburn	84	W	26	59	.441	8	24	.333	24	27	.889	9	22	31	41.8	11	20	12	2	8	84	84.2
Missouri Southern	64		23	56	.411	5	15	.333	13	15	.867	9	31	40	31.9	22	7	17	0	3	64	55.4
Washburn	66	W-OT	22	68	.324	5	30	.167	17	24	.708	20	25	45	42.0	16	15	12	2	9	66	83.4
at Pittsburg State	65		22	49	.449	6	10	.600	15	22	.682	10	16	26	31.7	15	13	21	1	4	65	55.8
Washburn	95	W	34	61	.557	13	25	.520	14	20	.700	14	22	36	41.7	20	26	17	7	4	95	83.9
at Southwest Baptist	65		16	55	.291	5	14	.357	10	15	.667	10	23	33	31.7	14	12	17	2	4	47	55.5
Washburn	95	W	33	70	.471	4	14	.286	14	19	.737	17	33	50	42.0	17	23	8	3	14	84	83.9
No. 5 Emporia State	57		21	57	.368	0	14	.000	15	19	.789	14	23	37	31.9	18	6	19	4	3	57	55.5
Washburn	73	W	27	57	.474	4	11	.364	15	22	.682	9	26	35	41.8	19	15	13	4	13	73	83.5
at Northwest Missouri	61		23	54	.426	6	14	.429	9	11	.818	8	21	29	31.8	11	11	18	2	8	61	55.7
Washburn	82	W	28	69	.406	13	28	.464	13	15	.867	18	24	42	41.8	11	11	14	4	7	82	83.4
at Central Missouri	63		21	53	.396	7	17	.412	14	16	.875	14	19	33	31.9	14	13	15	3	7	63	56.0
Washburn	76	W	29	61	.475	6	18	.333	12	15	.800	14	20	34	41.5	15	14	10	3	10	76	83.1

MIAA Tournament - Kansas City, Mo.

vs Truman	36		13	56	.232	3	14	.214	7	11	.636	6	30	36	32.0	17	5	16	3	7	36	55.3
Washburn	76	W	23	65	.354	3	12	.250	14	21	.667	13	39	52	41.9	16	14	12	9	13	63	82.4
vs Missouri Western	60		18	51	.353	8	19	.421	16	19	.842	7	29	36	32.1	16	12	15	1	2	60	55.4
Washburn	73	W	26	65	.400	7	24	.292	14	20	.700	15	27	42	41.9	14	15	8	3	8	73	82.1
vs Central Missouri	71		28	64	.438	8	16	.500	7	13	.538	14	21	35	32.2	18	17	11	1	4	71	56.0
Washburn	75	W	27	51	.529	5	15	.333	16	29	.552	7	26	33	41.6	12	13	10	4	9	75	81.9

NCAA South Central Regional Tournament - Topeka, Kan.

St. Mary's	58		16	60	.267	8	26	.308	18	18	1.000	10	18	28	32.1	19	5	16	2	7	58	56.0
Washburn	92	W	31	59	.525	13	25	.520	17	24	.708	12	31	43	41.6	14	23	16	7	13	92	82.2
vs Central Missouri	51		17	39	.436	7	14	.500	10	15	.667	4	28	32	32.1	18	10	25	2	5	51	55.9
Washburn	65	W	23	58	.397	5	22	.227	14	20	.700	11	22	33	41.3	16	15	12	2	16	65	81.7
vs No. 8 Emporia State	61		22	61	.361	2	6	.333	15	18	.833	16	26	42	32.4	16	6	24	3	9	61	56.0
Washburn	65	LOT	23	60	.383	6	20	.300	7	12	.583	13	22	35	41.2	15	9	21	7	12	59	81.0
Opponents	1849		641	1829	.350	157	501	.313	410	556	.737	344	725	1069	32.4	579	333	646	83	194	1849	56.0
Washburn	2672		972	2063	.471	207	615	.337	521	718	.726	447	911	1358	41.2	512	654	446	181	387	2672	81.0

Washburn Points/Rebounds/Assists in 2005-06

Opponent	Date	Score	WL	03 KEELEY	04 HOLMES	05 HOOKER	10 AEBI	11 ROADHOUSE	13 MAINZ	15 SAMARDZISKA	20 HENRICH	21 HARRIS
vs Central Oklahoma	11/18/05	96-59	W	0-2-4	12-7-1	0-1-0	8-1-2	0-2-4	0-0-0	12-3-1	5-0-0	16-5-6
vs SW Oklahoma State	11/19/05	92-40	W	2-6-2	4-5-1	0-0-0	7-1-6	0-1-5	2-1-0	14-6-0	0-0-0	30-7-3
CSU-STANISLAUS	11/24/05	102-43	W	11-8-3	6-7-2	0-1-1	11-3-0	2-6-7	3-2-1	14-3-1	0-0-0	18-8-5
WEST VIRGINIA TECH	11/25/05	86-50	W	7-3-5	7-6-1	0-1-0	12-1-0	4-1-0	2-4-4	10-3-1	1-0-0	16-10-5
BAKER	11/28/05	93-38	W	7-3-4	9-4-3	2-4-1	2-1-2	0-2-4	0-4-2	16-7-1	0-1-0	20-7-6
ANHANDLE STATE	11/30/05	94-53	W	6-3-3	10-5-0	0-0-1	0-2-2	4-3-7	5-6-0	14-4-2	1-1-0	19-3-4
CENTRAL MO. ST.	12/10/05	80-73	W	13-3-4	2-3-1	DNP	2-0-0	9-1-2	DNP	2-4-0	DNP	20-4-4
BENEDICTINE	12/14/05	95-52	W	4-4-0	2-4-0	0-1-0	14-1-7	0-2-2	4-1-2	6-7-1	0-0-0	25-5-12
DRURY	12/17/05	89-66	W	2-3-0	2-7-0	0-1-0	0-1-2	4-1-7	2-0-0	13-3-0	0-0-0	33-4-4
vs West Texas A&M	12/20/05	63-52	W	0-3-4	0-2-0	DNP	6-0-0	4-6-5	DNP	0-4-0	DNP	27-7-4
vs Cameron	12/21/05	66-50	W	6-4-2	2-2-3	DNP	0-1-1	1-3-5	DNP	0-2-0	DNP	12-5-9
at Truman	12/30/05	74-64	W	10-4-3	0-0-0	DNP	0-1-3	4-2-5	DNP	0-1-0	DNP	9-7-10
MISSOURI VALLEY	01/01/06	109-28	W	3-0-4	13-11-2	0-0-1	13-2-5	0-1-1	13-1-4	12-7-1	0-0-0	10-4-7
NORTHWEST MISSOURI	01/04/06	84-71	W	14-5-3	7-2-0	DNP	6-0-3	4-5-1	DNP	1-0-0	DNP	39-5-4
at Emporia State	01/11/06	72-70	W	5-2-3	2-3-1	DNP	3-0-1	5-0-4	DNP	0-1-0	DNP	28-7-2
SOUTHWEST BAPTIST	01/14/06	95-49	W	19-2-1	11-3-0	5-0-0	8-1-4	2-1-5	10-2-0	13-12-0	0-0-0	12-5-4
PITTSBURG STATE	01/18/06	74-54	W	6-5-0	4-4-1	0-1-0	3-0-1	11-6-4	1-3-0	4-2-0	0-0-0	16-7-6
at Missouri Southern	01/21/06	70-45	W	3-5-2	4-8-0	0-0-0	10-2-1	13-3-7	0-1-1	0-1-0	0-0-1	17-1-3
at Missouri Western	01/25/06	74-66	W	2-0-2	2-4-0	DNP	0-0-0	7-5-4	DNP	0-0-0	DNP	33-6-4
TRUMAN	01/28/06	77-61	W	2-7-1	0-4-2	0-0-0	0-2-0	4-1-8	0-1-0	7-4-0	0-0-0	27-3-4
MISSOURI WESTERN	02/01/06	84-71	W	4-4-3	4-2-0	DNP	7-1-1	5-4-3	DNP	2-0-1	DNP	35-2-8
MISSOURI SOUTHERN	02/04/06	66-64	WOT	6-9-2	0-4-1	DNP	3-1-0	0-2-4	DNP	4-0-0	DNP	28-5-7
at Pittsburg State	02/08/06	95-65	W	6-4-4	8-6-2	DNP	4-0-1	11-3-10	0-3-0	2-1-0	0-0-0	32-4-4
at Southwest Baptist	02/11/06	84-47	W	10-6-4	10-6-3	0-0-1	3-3-3	6-3-4	0-2-0	8-3-0	2-0-1	28-6-5
EMPORIA STATE	02/15/06	73-57	W	8-4-1	4-3-1	DNP	2-1-2	2-3-4	DNP	2-2-0	DNP	32-7-2
at Northwest Missouri	02/22/06	82-61	W	3-6-1	5-3-0	0-0-0	10-2-0	10-8-4	0-1-1	5-0-0	0-0-0	12-5-3
at Central Missouri State	02/25/06	76-63	W	2-3-0	10-9-1	DNP	3-0-0	4-6-8	DNP	6-3-0	DNP	35-5-5
vs Truman	03/02/06	63-36	W	4-3-0	6-5-1	0-0-0	0-3-1	2-2-2	2-2-1	13-12-0	0-0-0	15-11-5
vs Missouri Western	03/04/06	73-60	W	5-3-3	11-5-0	0-1-0	6-1-0	2-9-4	2-2-1	3-3-0	0-0-0	27-4-5
vs Central Missouri State	03/05/06	75-71	W	5-4-1	8-4-0	DNP	0-0-1	13-5-6	2-0-1	4-1-0	DNP	33-5-4
ST. MARY'S	03/10/06	92-58	W	9-1-1	6-2-0	3-2-0	14-2-2	5-6-7	3-2-1	6-7-0	0-0-0	28-8-8
CENTRAL MO. ST.	03/11/06	65-51	W	8-4-4	6-5-1	DNP	0-0-0	2-4-4	3-1-0	2-0-1	DNP	33-12-5
EMPORIA STATE	03/13/06	59-61	LOT	4-5-2	7-3-2	DNP	3-0-1	4-2-2	0-4-0	0-4-1	DNP	32-9-1

Opponent	Date	Score	WL	23 WITTMAN	25 SULLIVAN	32 UBELAKER	43 MCHENRY
vs Central Oklahoma	11/18/05	96-59	W	2-2-4	11-6-2	27-5-2	3-4-3
vs SW Oklahoma State	11/19/05	92-40	W	0-1-0	8-8-0	23-9-3	2-1-0
CSU-STANISLAUS	11/24/05	102-43	W	6-1-1	17-5-1	12-2-2	2-3-1
WEST VIRGINIA TECH	11/25/05	86-50	W	6-0-1	8-7-1	8-2-1	5-3-4
BAKER	11/28/05	93-38	W	4-1-1	10-3-2	19-4-5	4-4-2
PANHANDLE STATE	11/30/05	94-53	W	3-1-1	4-8-1	15-2-1	13-4-1
CENTRAL MO. ST.	12/10/05	80-73	W	DNP	3-8-1	27-8-1	2-4-4
BENEDICTINE	12/14/05	95-52	W	0-2-0	4-4-1	31-2-2	5-2-2
DRURY	12/17/05	89-66	W	0-0-0	13-7-0	13-4-2	7-10-1
vs West Texas A&M	12/20/05	63-52	W	DNP	9-5-0	17-9-1	0-1-0
vs Cameron	12/21/05	66-50	W	DNP	18-7-0	27-8-2	0-2-0
at Truman	12/30/05	74-64	W	DNP	20-10-2	31-5-3	0-2-0
MISSOURI VALLEY	01/01/06	109-28	W	7-0-1	16-8-2	13-5-2	9-3-4
NORTHWEST MISSOURI	01/04/06	84-71	W	DNP	6-6-4	7-4-3	0-3-0
at Emporia State	01/11/06	72-70	W	DNP	8-10-4	16-8-1	5-3-1
SOUTHWEST BAPTIST	01/14/06	95-49	W	0-0-2	4-8-2	11-3-2	0-2-7
PITTSBURG STATE	01/18/06	74-54	W	0-0-0	12-7-0	13-6-1	4-0-1
at Missouri Southern	01/21/06	70-45	W	2-0-0	9-11-1	9-6-1	3-1-2
at Missouri Western	01/25/06	74-66	W	DNP	13-8-0	17-10-6	0-1-0
TRUMAN	01/28/06	77-61	W	2-0-0	14-5-2	18-7-1	3-1-1
MISSOURI WESTERN	02/01/06	84-71	W	DNP	7-6-1	18-9-2	2-0-1
MISSOURI SOUTHERN	02/04/06	66-64	WOT	DNP	12-14-0	13-6-1	0-1-0
at Pittsburg State	02/08/06	95-65	W	2-2-1	8-6-1	16-3-2	6-2-1
at Southwest Baptist	02/11/06	84-47	W	2-1-0	6-9-1	9-5-1	0-3-0
EMPORIA STATE	02/15/06	73-57	W	DNP	4-3-3	19-6-1	0-0-1
at Northwest Missouri	02/22/06	82-61	W	3-0-0	7-7-0	23-4-0	4-2-2
at Central Missouri State	02/25/06	76-63	W	DNP	2-0-0	14-3-0	0-0-0
vs Truman	03/02/06	63-36	W	0-1-0	DNP	18-9-3	3-2-1
vs Missouri Western	03/04/06	73-60	W	0-0-0	DNP	17-5-1	0-2-1
vs Central Missouri State	03/05/06	75-71	W	DNP	DNP	10-7-0	0-2-0
ST. MARY'S	03/10/06	92-58	W	2-2-2	DNP	16-5-1	0-2-1
CENTRAL MO. ST.	03/11/06	65-51	W	DNP	DNP	11-3-0	0-1-0
EMPORIA STATE	03/13/06	59-61	LOT	DNP	DNP	9-5-0	0-0-0

*April Roadhouse*

#3 Cindy Keeley

Points	19, vs Southwest Baptist	1/14/06
Rebounds	9, vs Missouri Southern	2/4/06
Assists	5, two times	
Steals	5, vs Emporia State	2/15/06
Blocked Shots	3, vs Northwest Mo. St.	1/12/05
Field Goals	7, vs Southwest Baptist	1/14/06
Field Goal Attempts	10, vs Southwest Baptist	1/14/06
Free Throws	5, two times	
Free Throw Attempts	6, vs Missouri-Rolla	2/21/04
Three-Point Field Goals	4, vs Southwest Baptist	1/14/06
Three-Point Attempts	5, vs Southwest Baptist	1/14/06
Minutes Played	41, vs Emporia State	

#4 Amanda Holmes

Points	13, vs Missouri Valley	1/1/06
Rebounds	11, vs Missouri Valley	1/1/06
Assists	3, three times	
Steals	6, vs Missouri Valley	1/1/06
Blocked Shots	3, three times	
Field Goals	5, two times	
Field Goal Attempts	9, two times	
Free Throws	7, vs Missouri Western	3/4/06
Free Throw Attempts	10, vs Missouri Western	3/4/06
Three-Point Field Goals	2, two times	
Three-Point Attempts	5, vs Okla. Panhandle	11/30/05
Minutes Played	30, Emporia State	3/13/06

#5 KG Hellen

Points	-	
Rebounds	-	
Assists	-	
Steals	-	
Blocked Shots	-	
Field Goals	-	
Field Goal Attempts	-	
Free Throws	-	
Free Throw Attempts	-	
Three-Point Field Goals	-	
Three-Point Attempts	-	
Minutes Played	-	

#10 Jessica Aebi

Points	14, two times	
Rebounds	3, three times	
Assists	7, vs Benedictine	12/14/05
Steals	3, three times	
Blocked Shots	1, three times	
Field Goals	6, vs Missouri Valley	1/1/06
Field Goal Attempts	10, vs Missouri Valley	1/1/06
Free Throws	6, vs CSU-Stanislaus	11/24/05
Free Throw Attempts	6, vs CSU-Stanislaus	11/24/05
Three-Point Field Goals	4, vs St. Mary (Texas)	3/10/06
Three-Point Attempts	4, three times	
Minutes Played	22, vs Southwestern Okla.	11/19/05

#11 Renata Germano

Points	-	
Rebounds	-	
Assists	-	
Steals	-	
Blocked Shots	-	
Field Goals	-	
Field Goal Attempts	-	
Free Throws	-	
Free Throw Attempts	-	
Three-Point Field Goals	-	
Three-Point Attempts	-	
Minutes Played	-	

#13 Jessica Mainz

Points	13, vs Missouri Valley	1/1/06
Rebounds	6, vs Okla. Panhandle	11/30/05
Assists	4, two times	
Steals	5, vs Missouri Valley	1/1/06
Blocked Shots	1, two times	
Field Goals	5, vs Missouri Valley	1/1/06
Field Goal Attempts	6, vs Missouri Valley	1/1/06
Free Throws	3, two times	
Free Throw Attempts	4, two times	
Three-Point Field Goals	n/a	
Three-Point Attempts	1, three times	
Minutes Played	19, vs Southwest Baptist	1/14/06

#15 Nikki Holmes

Points	-	
Rebounds	-	
Assists	-	
Steals	-	
Blocked Shots	-	
Field Goals	-	
Field Goal Attempts	-	
Free Throws	-	
Free Throw Attempts	-	
Three-Point Field Goals	-	
Three-Point Attempts	-	
Minutes Played	-	

#20 Holly Henrichs

Points	5, two times	
Rebounds	2, vs Truman State	1/17/04
Assists	1, 11 times	
Steals	1, eight times	
Blocked Shots	1, two times	
Field Goals	1, eight times	
Field Goal Attempts	1, several times	
Free Throws	4, vs Southwest Baptist	1/19/05
Free Throw Attempts	6, vs Southwest Baptist	1/19/05
Three-Point Field Goals	1, two times	
Three-Point Attempts	1, seven times	
Minutes Played	8, vs Baker	11/29/03

#21 Sequorhea Stiger

Points	-	
Rebounds	-	
Assists	-	
Steals	-	
Blocked Shots	-	
Field Goals	-	
Field Goal Attempts	-	
Free Throws	-	
Free Throw Attempts	-	
Three-Point Field Goals	-	
Three-Point Attempts	-	
Minutes Played	-	

#23 Stephanie Wittman

Points	7, vs Missouri Valley	1/1/06
Rebounds	2, four times	
Assists	4, vs Central Okla.	11/18/05
Steals	n/a	
Blocked Shots	1, three times	
Field Goals	3, vs Missouri Valley	1/1/06
Field Goal Attempts	6, vs Missouri Valley	1/1/06
Free Throws	4, vs CSU-Stanislaus	11/24/05
Free Throw Attempts	6, vs CSU-Stanislaus	11/24/05
Three-Point Field Goals	2, vs West Virginia Tech	11/25/05
Three-Point Attempts	2, three times	
Minutes Played	9, vs Central Okla.	11/18/05

#24 Karla Taillele

Points	-	
Rebounds	-	
Assists	-	
Steals	-	
Blocked Shots	-	
Field Goals	-	
Field Goal Attempts	-	
Free Throws	-	
Free Throw Attempts	-	
Three-Point Field Goals	-	
Three-Point Attempts	-	
Minutes Played	-	

#25 Megan Sullivan

Points	20, at Truman	12/30/05
Rebounds	14, vs Missouri Southern	2/4/06
Assists	4, two times	
Steals	5, vs Rockhurst	11/17/04
Blocked Shots	3, three times	
Field Goals	9, vs Cameron	12/21/05
Field Goal Attempts	16, vs Cameron	12/21/05
Free Throws	6, vs Pittsburg State	1/18/06
Free Throw Attempts	6, three times	
Three-Point Field Goals	—	
Three-Point Attempts	1, at Northwest Missouri	2/16/05
Minutes Played	39, vs Missouri Southern	2/4/06

#32 Brooke Ubelaker

Points	31, two times	
Rebounds	12, two times	
Assists	6, at Missouri Western	1/25/06
Steals	5, vs Truman State	1/17/04
Blocked Shots	2, four times	
Field Goals	13, at Truman	12/30/05
Field Goal Attempts	24, vs Cameron	12/21/05
Free Throws	8, vs Northwest Missouri	3/6/04
Free Throw Attempts	9, vs Northwest Missouri	3/6/04
Three-Point Field Goals	6, at Northwest Missouri	2/22/06
Three-Point Attempts	12, vs Cameron	12/21/05
Minutes Played	43, vs Emporia State	3/13/06

#33 Hope Gregory

Points	-	
Rebounds	-	
Assists	-	
Steals	-	
Blocked Shots	-	
Field Goals	-	
Field Goal Attempts	-	
Free Throws	-	
Free Throw Attempts	-	
Three-Point Field Goals	-	
Three-Point Attempts	-	
Minutes Played	-	



Washburn Lady Blues Career Stats

Aebi,Jessica

Year	GP	GS	Min	Avg	Total			FG	FGA	Pct	FT	FTA	Pct	Rebounds			PF	FO	Ast	TO	Blk	Stl	Pts	Avg	
					FG	FGA	Pct							Off	Def	Tot									
2005-06	33	0	459	13.9	57	116	.491	23	54	.426	23	29	.793	3	31	34	1.0	23	0	52	38	3	22	160	4.8
TOTAL	33	0	459	13.9	57	116	.491	23	54	.426	23	29	.793	3	31	34	1.0	23	0	52	38	3	22	160	4.8

Germano,Renata

Gregory,Hope

Helen,KG

Henrichs,Holly

Year	GP	GS	Min	Avg	Total			FG	FGA	Pct	FT	FTA	Pct	Rebounds			PF	FO	Ast	TO	Blk	Stl	Pts	Avg	
					FG	FGA	Pct							Off	Def	Tot									
2003-04	15	0	48	3.2	3	8	.375	2	5	.400	0	0	.000	1	3	4	0.3	6	0	4	5	1	2	8	0.5
2004-05	21	0	52	2.5	3	6	.500	0	1	.000	4	7	.571	0	4	4	0.2	4	0	5	9	0	3	10	0.5
2005-06	19	0	59	3.1	2	6	.333	0	2	.000	5	12	.417	0	2	2	0.1	5	0	2	6	1	3	9	0.5
TOTAL	55	0	159	2.9	8	20	.400	2	8	.250	9	19	.474	1	9	10	0.2	15	0	11	20	2	8	27	0.5

Holmes,Amanda

Year	GP	GS	Min	Avg	Total			FG	FGA	Pct	FT	FTA	Pct	Rebounds			PF	FO	Ast	TO	Blk	Stl	Pts	Avg	
					FG	FGA	Pct							Off	Def	Tot									
2005-06	33	6	492	14.9	65	150	.433	7	27	.259	47	74	.635	48	100	148	4.5	72	2	30	50	26	28	184	5.6
TOTAL	33	6	492	14.9	65	150	.433	7	27	.259	47	74	.635	48	100	148	4.5	72	2	30	50	26	28	184	5.6

Holmes,Nikki

Keeley,Cindy

Year	GP	GS	Min	Avg	Total			FG	FGA	Pct	FT	FTA	Pct	Rebounds			PF	FO	Ast	TO	Blk	Stl	Pts	Avg	
					FG	FGA	Pct							Off	Def	Tot									
2003-04	31	0	453	14.6	41	93	.441	7	31	.226	25	36	.694	27	52	79	2.5	31	0	49	26	6	25	114	3.7
2004-05	37	1	466	12.6	35	85	.412	7	31	.226	16	25	.640	49	46	95	2.6	41	0	37	13	10	25	93	2.5
2005-06	33	33	871	26.4	71	134	.530	17	49	.347	37	49	.755	56	72	128	3.9	72	1	76	26	12	50	196	5.9
TOTAL	101	34	1790	17.7	147	312	.471	31	111	.279	78	110	.709	132	170	302	3.0	144	1	162	65	28	100	403	4.0

Mainz,Jessica

Year	GP	GS	Min	Avg	Total			FG	FGA	Pct	FT	FTA	Pct	Rebounds			PF	FO	Ast	TO	Blk	Stl	Pts	Avg	
					FG	FGA	Pct							Off	Def	Tot									Avg
2005-06	22	0	186	8.5	19	34	.559	0	3	.000	16	22	.727	20	23	43	2.0	10	0	19	8	2	22	54	2.5
TOTAL	22	0	186	8.5	19	34	.559	0	3	.000	16	22	.727	20	23	43	2.0	10	0	19	8	2	22	54	2.5

Stiger,Corkey

Sullivan,Megan

Year	GP	GS	Min	Avg	Total			FG	FGA	Pct	FT	FTA	Pct	Rebounds			PF	FO	Ast	TO	Blk	Stl	Pts	Avg	
					FG	FGA	Pct							Off	Def	Tot									
2003-04	22	0	174	7.9	21	53	.396	0	0	.000	8	18	.444	24	20	44	2.0	12	0	9	14	2	11	50	2.3
2004-05	37	0	483	13.1	65	147	.442	0	1	.000	19	41	.463	36	99	135	3.6	49	1	28	39	13	25	149	4.0
2005-06	27	27	629	23.3	106	203	.522	0	0	.000	41	65	.631	83	103	186	6.9	53	0	32	41	22	20	253	9.4
TOTAL	86	27	1286	15.0	192	403	.476	0	1	.000	68	124	.548	143	222	365	4.2	114	1	69	94	37	56	452	5.3

Tailele,Karla

Ubelaker,Brooke

Year	GP	GS	Min	Avg	Total			FG	FGA	Pct	FT	FTA	Pct	Rebounds			PF	FO	Ast	TO	Blk	Stl	Pts	Avg	
					FG	FGA	Pct							Off	Def	Tot									
2003-04	31	31	654	21.1	121	218	.555	22	50	.440	54	63	.857	61	107	168	5.4	45	1	24	50	7	28	318	10.3
2004-05	37	37	1010	27.3	185	347	.533	51	120	.425	55	77	.714	71	143	214	5.8	73	0	56	72	14	40	476	12.9
2005-06	33	33	962	29.2	197	401	.491	71	189	.376	82	102	.804	45	134	179	5.4	56	0	54	43	14	43	547	16.6
TOTAL	101	101	2626	26.0	503	966	.521	144	359	.401	191	242	.789	177	384	561	5.6	174	1	134	165	35	111	1341	13.3

Wittman,Stephanie

Year	GP	GS	Min	Avg	Total			FG	FGA	Pct	FT	FTA	Pct	Rebounds			PF	FO	Ast	TO	Blk	Stl	Pts	Avg	
					FG	FGA	Pct							Off	Def	Tot									
2005-06	19	0	78	4.1	13	30	.433	5	10	.500	10	12	.833	2	12	14	0.7	9	0	14	8	3	0	41	2.2
TOTAL	19	0	78	4.1	13	30	.433	5	10	.500	10	12	.833	2	12	14	0.7	9	0	14	8	3	0	41	2.2

Exhibition #1

Nov. 5, 2006 • Lawrence, Kan. • Allen Fieldhouse (1150)

Kansas 68 • Washburn 62

Washburn	MP	FG	3P	FT	R	F	AS	TO	BS	ST	TP
Holmes,A.	22	0-6	0-1	2-2	2	3	1	4	1	1	2
Sullivan	29	3-6	1-1	2-4	7	2	2	3	0	1	9
Ubelaker	37	3-10	1-6	0-0	2	3	4	4	0	2	7
Keeley	31	4-8	3-5	4-4	3	2	1	1	0	1	15
Aebi	34	4-7	2-4	1-1	1	4	5	2	0	1	11
Hellen	1	0-0	0-0	0-0	0	0	0	0	0	0	0
Germano	7	0-1	0-0	0-1	2	3	0	2	0	0	0
Tailele	6	1-2	1-1	0-0	0	1	0	1	0	0	3
Holmes,N.	7	0-2	0-1	0-0	1	2	1	1	0	1	0
Stiger	26	3-6	0-3	9-11	3	1	0	3	0	1	15
TEAM	20018-488	2218-2331	21	14	26	1	8	62			

Kansas	MP	FG	3P	FT	R	F	AS	TO	BS	ST	TP
Boy	19	3-4	0-0	0-1	1	1	0	0	0	0	6
McIntosh	22	2-2	0-0	1-2	5	4	0	1	1	1	5
Morris	16	2-3	0-0	0-0	1	1	0	3	0	2	4
Catic	9	0-0	0-0	0-0	0	0	3	0	0	0	0
Mosley	30	2-7	0-2	4-5	4	1	6	7	0	2	8
Jacobs	22	4-16	0-1	2-2	3	3	2	2	0	4	10
Kohn	24	2-6	0-1	3-4	5	3	1	3	0	1	7
McCray	20	6-10	0-0	1-2	5	3	0	2	0	1	13
Zinic	38	3-8	0-0	9-12	7	1	1	2	3	0	15
TEAM	20024-56	0-420-2837	17	13	20	4	11	68			

Halftime FG% 3PT% FT%Washburn 29 .375 .364 .783
Kansas 24 .429 .000 .714**Technical:** None

Notes: WU No. 6 in Presason WBCA Division II Poll ... the Lady Blues led at the break 29-24 after shooting 42 percent from the field while holding the Jayhawks to 32 percent shooting. Washburn would push their lead to nine in the second half at the 16:49 mark, but Washburn let the lead slip away as they were held to 33 percent shooting in the second half while committing 13 turnovers that turned into 12 points for the Jayhawks and the 68-62 win ... senior Cindy Keely and junior transfer Sequorhea Stiger led the Lady Blues with 15 points. Senior Jessica Aebi scored 11.

Exhibition #2

Nov. 7, 2006 • Kansas City, Mo. • Municipal Auditorium (200)

Washburn 73 • Missouri-Kansas City 70

Washburn	MP	FG	3P	FT	R	F	AS	TO	BS	ST	TP
Holmes,A.	26	3-9	1-1	5-8	10	3	1	1	0	0	12
Sullivan	21	2-5	0-0	3-6	10	3	2	1	0	1	7
Ubelaker	31	4-12	4-7	2-2	4	3	2	1	0	4	14
Keeley	21	1-2	0-0	0-0	2	4	1	2	0	0	2
Aebi	27	1-4	0-3	6-6	3	1	4	4	0	3	8
Hellen	9	2-3	0-1	0-1	0	2	2	2	0	0	4
Germano	11	1-5	0-0	1-6	6	1	0	1	2	1	2
Mainz	1	0-0	0-0	0-0	1	0	0	1	0	0	0
Tailele	8	0-2	0-2	0-0	1	0	1	2	1	0	0
Holmes,N.	7	1-3	0-0	0-0	2	1	0	0	0	0	2
Henrichs	4	0-0	0-0	0-0	0	1	0	0	0	0	0
Stiger	27	8-16	1-6	1-1	3	1	3	2	0	2	18
Wittman	6	1-2	1-1	0-0	1	1	0	1	0	2	3
Gregory	1	0-0	0-0	0-0	0	0	0	0	0	0	0
TEAM	20024-637	2118-3047	21	16	18	3	13	73			

UMKC	MP	FG	3P	FT	R	F	AS	TO	BS	ST	TP
Brown	23	4-9	0-0	3-5	10	3	0	3	0	0	11
Klein	18	4-6	0-0	3-3	5	2	1	4	1	0	11
Ortega	28	6-9	0-1	2-2	3	4	4	0	0	2	14
Beer	26	1-5	1-4	0-1	5	1	4	3	0	3	3
Morris	27	3-12	0-3	3-4	8	1	2	2	0	3	9
Emerson	9	2-5	1-1	0-0	1	2	0	5	0	0	5
Radke	4	0-1	0-0	0-0	1	1	1	2	0	0	0
Fields	4	0-1	0-0	0-0	0	1	1	0	0	0	0
Wimberly	11	0-2	0-0	0-0	1	3	0	0	0	1	0
Waelen	9	1-2	0-0	1-2	1	3	0	1	0	0	3
Mead	12	0-7	0-5	0-0	1	1	1	0	0	0	0
Picconi	24	4-9	1-4	2-2	1	0	1	0	0	0	11
Graham	5	1-2	1-2	0-0	2	1	0	0	0	1	3
TEAM	20026-704	2014-1947	23	15	20	1	10	70			

Halftime FG% 3PT% FT%Washburn 29 .381 .333 .600
UMKC 26 .371 .200 .737**Technical:** None

Notes: WU No. 6 in Presason WBCA Division II Poll ... WU leads from start to finish over DI UMKC beating Kangaroos for 3rd straight season in exhibition game.

Exhibition #3

Nov. 10, 2006 • Topeka, Kan. • Lee Arena (1,000)

Washburn Golfers 79 • Washburn 65

WU Golf	MP	FG	3P	FT	R	F	AS	TO	BS	ST	TP
Wempe	2711-18	6-9	4-4	4	1	1	1	0	2	32	
Robbins	23	3-7	0-1	0-0	9	0	1	0	0	1	6
Ewald	25	2-11	0-0	0-0	4	3	2	2	0	2	4
Deutsch	13	2-6	0-2	0-0	2	4	0	0	0	1	4
Dunham	21	4-9	0-1	2-2	5	0	3	0	0	0	10
Fisher	14	0-1	0-0	0-0	1	0	1	1	0	0	0
Hemmingway	231-4	0-1	0-0	4	2	2	0	0	0	2	
Nelson	13	0-3	0-0	0-0	2	1	1	2	0	2	0
Hamilton	21	4-9	0-2	2-4	4	1	3	5	0	1	10
Resner	20	5-11	1-1	0-0	7	0	0	2	0	1	11
TEAM	20032-797	178-10	47	12	14	13	0	13	79		

Washburn	MP	FG	3P	FT	R	F	AS	TO	BS	ST	TP
Sullivan	17	1-6	0-0	0-0	4	0	0	2	0	0	2
Ubelaker	22	4-9	0-3	0-0	5	1	0	2	0	0	8
Aebi	19	1-3	0-2	0-0	2	0	1	0	1	0	2
Holmes,N.	10	1-6	1-4	0-0	4	0	0	1	0	0	3
Stiger	19	3-7	0-4	1-1	4	0	3	1	0	0	7
Keeley	20	1-5	1-4	2-2	3	2	2	0	0	2	5
Holmes,A.	17	6-9	1-1	5-7	6	2	1	1	1	0	18
Hellen	10	0-2	0-1	0-0	0	0	1	2	0	0	0
Germano	13	4-4	0-0	3-4	3	0	1	2	0	2	11
Mainz	10	0-0	0-0	0-0	2	0	1	1	0	0	0
Tailele	10	1-1	0-0	0-0	1	0	1	3	0	0	2
Henrichs	11	1-2	0-1	0-0	0	0	0	1	0	0	2
Wittman	11	1-5	1-4	0-0	0	0	0	1	0	1	3
Gregory	11	0-1	0-1	2-2	3	0	0	2	0	0	2
TEAM	20024-604	2513-1640	5	11	19	2	5	65			

Halftime FG% 3PT% FT%WU Golf 40 .405 .412 .800
Washburn 29 .400 .160 .813**Technical:** None

Notes: WU No. 6 in Presason WBCA Division II Poll ... Amanda Holmes leads WU with 18 points ... Sam Wempe scores 32 in 27 minutes for the men's golf team.