



2006-07 LADY BLUES BASKETBALL SCHEDULE

DATE	OPPONENT	TIME
Sun., Nov. 5	at Kansas (Exhibition)	L 62-68
Tues., Nov. 7	at Missouri-Kansas City (Exhibition)	W 73-70
Fri., Nov. 10	vs Ichabod Golf Team (Exhibition)	L 65-79
Emporia State/Candlewood Suites Classic • Emporia, Kan.		
Fri., Nov. 17	vs Southwestern Oklahoma	W 81-40
Sat., Nov. 18	vs Cameron	W 96-65
Premier Mortgage/WIBW Radio Holiday Classic • Topeka, Kan.		
Fri., Nov. 24	CAMERON	W 89-66
Sat., Nov. 25	LYNN	W 90-40
Mon., Dec. 4	SOUTHWESTERN COLLEGE	W 69-36
Sat., Dec. 9	No. 24 MISSOURI WESTERN*	L 68-76
Tues., Dec. 12	BENEDICTINE	W 81-65
Sat., Dec. 16	LINCOLN	W 81-29
Hoops and Surf Classic • Honolulu, Hawaii		
Tues., Dec. 19	vs Northwood (Mich.)	W 90-44
Wed., Dec. 20	vs No. 7 Glenville State	W 69-57
Sat., Dec. 30	at Central Missouri*	W 66-44
Wed., Jan. 3	No. 4 EMPORIA STATE* -- (KTWU)	W 69-62
Sat., Jan. 6	NORTHWEST MISSOURI*	W 71-57
Wed., Jan. 10	FORT HAYS STATE* -- (KTWU)	W 78-34
Sat., Jan. 13	at Truman*	W 83-58
Wed., Jan. 17	SOUTHWEST BAPTIST*	W 80-56
Sat., Jan. 20	PITTSBURG STATE* -- (KTWU)	W 84-55
Wed., Jan. 24	at Missouri Southern*	W 65-54
Sat., Jan. 27	at No. 2 Missouri Western*	L 47-49
Thurs., Feb. 1	MISSOURI SOUTHERN*	W 81-50
Sat., Feb. 3	at Pittsburg State*	W 73-56
Tues., Feb. 6	at Southwest Baptist*	W 76-56
Sat., Feb. 10	TRUMAN*	1:30 p.m.
Wed., Feb. 14	at Northwest Missouri*	5:30 p.m.
Sat., Feb. 17	at Emporia State* -- (CSTV)	11 a.m.
Wed., Feb. 21	at Fort Hays State*	5:30 p.m.
Sat., Feb. 24	CENTRAL MISSOURI*	5:30 p.m.
Mar. 2, 3, 4	MIAA Postseason Conference Tournament	TBA
Mar. 9, 10, 12	NCAA South Central Regional Tournament	TBA
Mar. 21, 22, 24	NCAA Elite Eight	TBA

Home Games, CAPS, BOLD, BLUE - Games played at Lee Arena

* Denotes MIAA Game - Times CST unless listed otherwise

Washburn Sports Information Office

Sports Information Director	Gene Cassell
WBB Contact	Cassell
SID Office Phone	(785) 670-1791
SID Fax	(785) 670-1091
e-mail	gene.cassell@washburn.edu
Athletics Web site	www.wusports.com



Series Record: WU 31-8

Last Meeting: WU 83-58, 1/13/07
in Kirksville, Mo.

Last WU win: same

Last TSU win: 55-53 in Kirksville on 2/1/03

Worth noting: Washburn has won the last nine meetings in the series. The Lady Blues are 19-1 in Topeka against the Bulldogs, Truman won their first game in Topeka on 11/30/79, but have lost the last 19.



In conjunction with the launch of themiaa.tv, all basketball webcasts available through the site will be only \$4 per game -- men's or women's. Users of themiaa.tv can watch games on any home computer with Windows Media Player or other player capable of showing streaming windows video, as long as a high-speed DSL or cable internet connection is used. Games can be ordered in advance or while they are in progress -- an account at Penn Atlantic's site, PennAtlantic.com, is all that is needed to purchase the games.

Game 23

Game 23 Matchup: Washburn (20-2, 11-2 MIAA) vs Truman (8-14, 3-10 MIAA)

Date: Saturday, Feb. 10

Time: 1:30 p.m.

Site: Lee Arena (3,904)

Radio: Lady Blues games will be broadcast on KTPK 106.9 FM with Mark Elliott and Bruce Steinbrock.

Online: images.radcity.net/5089/1635475.asx

Live Stats: http://www.wusports.com/live/hoops/wbb/xlive.htm

Live Video: http://www.themiaa.tv

Coaches: Washburn head coach Ron McHenry is 179-35 (.838) in his seventh season - McHenry is 13-2 against Truman. John Sloop is 71-113 in his seventh year at TSU. He is 2-13 against Washburn.

Rankings: The Lady Blues are ranked No. 4 in the WBCA ESPN/USA Today Division II Coaches Poll and No. 3 in the NCAA South Central Regional Poll. Truman is unranked

THE NO. 4 LADY BLUES SET TO ENTERTAIN BULLDOGS IN SECOND TO LAST HOME GAME OF THE SEASON . . .

The No. 4 ranked Washburn Lady Blues (20-2, 11-2 MIAA) will play host to the Truman Bulldogs (8-14, 3-10 MIAA) on Saturday afternoon in Lee Arena. The Lady Blues secured their sixth straight 20-win season in their 76-56 win at Southwest Baptist on Tuesday. The Bulldogs lost to Northwest Missouri at home on Wednesday 80-70 for their fourth straight loss. The Bulldogs have lost their last 19 games in Topeka winning only their first game in Topeka played in Whiting Fieldhouse on Nov. 30, 1979.

LADY BLUES ON RADIO . . .

Lady Blues games will be broadcast on KTPK 106.9 with former Washburn quarterback Mark Elliott calling all the action. The games will also be streamed live online at http://images.radcity.net/5089/1635475.asx.

Washburn Lady Blues Notes ^ Probable starter • Complete roster on page 6

#	Name	Pos	HT	Class	PPG	RPG	APG	Notes
3	^Cindy Keeley	G	5-9	Sr.	9.0	5.0	2.5	Averaging 9.4 points and 5.4 rebounds per game in MIAA play
4	^Amanda Holmes	F	6-2	Jr.	11.7	7.4	1.3	Averaging 8.1 rebounds per game in MIAA play
10	^Jessica Aebi	G	5-7	Sr.	7.2	1.9	3.7	42 3-pointers is 17th all time
11	Renata Germano	C	6-2	So.	4.5	2.8	0.5	12 of 17 from free throw line in the last 5 minutes of games this season
13	Jessica Mainz	G	5-9	So.	4.0	3.1	2.7	12 assists and one turnovers in last three games
15	Nikki Holmes	G	5-10	Sr.	4.1	2.4	0.6	At least 1 field goal in last 10 of last 12 games
20	Holly Henrichs	G	5-5	Sr.	0.5	0.3	0.3	4 of 4 from free throw line this season
21	Corkey Stiger	G	5-9	Jr.	13.5	3.6	3.1	Averaging 22.3 points in last three games (28 of 45 from the field - 62%)
23	Stephanie Wittman	G	5-10	So.	0.7	0.9	0.9	Played at PSU after missing MSSU game with hip injury
24	Karla Tailele	G	5-6	Jr.	4.0	0.0	0.5	Will redshirt this season with continuing knee problems
25	^Megan Sullivan	F	6-1	Sr.	5.5	3.5	1.2	5 assists vs Southwest Baptist was a career high
32	^Brooke Ubelaker	F	5-11	Sr.	15.1	5.3	2.0	Has had 80 games with at least 5 rbs ... averaging 5.5 for 123-game career
33	Hope Gregory	G	5-10	Fr.	0.4	1.2	0.2	Will redshirt this season straining previous injury



Ron McHenry, 7th season

Since his appointment as head coach prior to the 2000-01 season, Ron McHenry has quickly returned the Washburn women's basketball program to national prominence.

In seven seasons on the Lady Blues bench, McHenry has won 83 percent of his games going 179-35 (.838) overall with four straight MIAA Championships and two straight MIAA Tournaments. During the 2005-06 season, Washburn continued its NCAA record 51-game winning streak into the regional finals, where Washburn fell in overtime. For his efforts, he named the MIAA Coach of the Year after leading the team to a perfect 16-0 season.

In 2004-05, McHenry was named MIAA Coach of the Year and Molten/Division II Bulletin National Coach of the Year after guiding Washburn to its first-ever NCAA Division II crown in any sport. He also led the Lady Blues to a third straight MIAA regular season title, an MIAA Tournament title and a South Central Regional title with a 35-2 record.

In his seven seasons McHenry has posted a 179-35 (.837) record overall and 94-25 (.790) record in the MIAA. He is third among active women's NCAA Division II Coaches in winning percentage.

The Lady Blues posted a 26-5 record and a second straight MIAA regular season crown in 2003-04. The Lady Blues also earned a berth to the NCAA Division II National Tournament for the third straight year.

In only his third season in 2002-03, McHenry guided the Lady Blues to a regular season MIAA title, a Sonic/MIAA Tournament championship and a berth to the Division II Elite Eight.

The Lady Blues tied for second most wins in team history at 30-4 and went to the Elite Eight for the third time in team history. For his efforts he was named District VI Coach of the Year.

In his second season McHenry engineered one of the best turnarounds in Division II, guiding Washburn to the South Central Regional and finishing with a 23-7 record.

He guided the Lady Blues to back-to-back 20 win seasons after finishing with a 13-14 record in 2000-01, which was also his first season as a head coach at the collegiate level.

McHenry was named the head coach on May 8, 2000.

He became only the fifth coach in the history of the women's basketball program at Washburn and the first new head coach since Patty Dick joined the Lady Blues as the head coach in the 1977-78 season.

Prior to his new appointment, McHenry spent the previous 11 seasons as a member of the men's basketball coaching staff under current coach Bob Chipman. While on the Washburn bench, he was a part of 243 wins. In addition to his basketball duties, McHenry was the men's golf coach for eight seasons.

McHenry has had a diverse coaching career. He began his career as a graduate assistant to Chipman during the 1984-85 season. He then went on to Perry High School in 1986 where he served as assistant boys coach.

McHenry quickly moved up the coaching ranks in 1988 when he assumed an assistant's position with the Topeka Sizzlers of the Continental Basketball Association.

McHenry eventually became the Sizzlers' interim head coach before joining the Washburn staff for the 1989-90 campaign. During his first year on the Washburn staff, McHenry was the department's academic advisor.

McHenry played for Washburn after stints at Coffeyville Community College and the University of Kansas. He started for the Ichabods during the 1983-84 season.

He graduated from Washburn with a bachelor's degree in communications and went on to earn a master's degree in sports administration from Wichita State University in 1987.

McHenry and his wife, Mischa, have three children, Danielle, Samantha and Ronnie.

McHenry Through the Years

Year	W/L	Postseason
2000-01	13-14	MIAA Tournament
2001-02	23-7	NCAA Tournament 1st Round
2002-03	30-4	NCAA Elite Eight
2003-04	26-5	NCAA Regional Semifinals
2004-05	35-2	NCAA National Champions
2005-06	32-1	NCAA Regional Finals
2006-07	20-2	
7 seasons	179-35 (.838)	

Probable Washburn Starters

LADY BLUES (20-2, 11-2) HT			YR	Pos	Hometown	PPG	RPG
3	Cindy Keeley	5-9	Sr.	G	Great Bend, Kan.	9.0	5.0
10	Jessica Aebi	5-7	Sr.	G	Enid, Okla.	7.2	1.3 apg
32	Brooke Ubelaker	5-10	Sr.	F	Osborne, Kan.	15.1	5.3
25	Megan Sullivan	6-1	Sr.	F	Spring, Hill, Kan.	5.5	3.5
4	Amanda Holmes	6-2	Jr.	F	Topeka, Kan.	11.7	7.4

Probable Truman Starters

BULLDOGS (8-14, 3-10)		HT	YR	Pos	Hometown	PPG	RPG
12	Georgia Mueller	5-10	So.	F	Springfield, Ill.	17.1	8.6
5	Julia Montebello	5-5	Jr.	G	Florianapolis, Brazil	6.4	1.9
2	Katie Fowler	5-10	Jr.	G	Unionville, Mo.	7.2	3.0
10	Candace McGee	5-8	Jr.	G	Longview, Ill.	11.5	3.2
11	Carmen McGee	5-8	Jr.	G	Longview, Ill.	4.5	5.3

McHenry vs Ranked Teams

Date	Rank	Opponent	Score	WU
2000-01 Season				
1/10/01	No. 3	vs Emporia State	L 42-65	
1/17/01	No. 24	vs Central Missouri	W 65-64	
1/20/01	No. 21	vs Missouri Western	L 43-86	
2/8/01	No. 3	at Emporia State	L 50-55	
2/17/01	No. 15	at Missouri Western	L 50-76	
2/27/01	No. 15	at Missouri Western*	L 52-64	
2001-02 Season				
11/24/01	No. 17	at Nebraska-Kearney	W 46-45	
1/2/02	No. 5	vs Missouri Western	L 67-69	
1/30/02	No. 2	at Missouri Western	L 64-72	
3/1/02	No. 1	vs Missouri Western*	L 51-54	
2002-03 Season				
1/29/03	No. 22	vs Missouri Western	L 56-60	5
2/19/03	No. 22	vs Emporia State	W 65-57	12
2/26/03	No. 24	at Missouri Western	W 70-55	11
3/15/03	No. 25	vs Emporia State@	W 66-60	8
3/17/03	No. 17	vs Drury!	W 87-71	8
3/26/03	No. 15	vs Northern Kentucky#	L 53-65	5
2003-04 Season				
1/7/04	No. 9	vs Emporia State	L(2ot) 76-78	5
2/18/04	No. 17	vs Northwest Missouri	W 66-57	13
2/28/04	No. 3	at Emporia State	W 51-50	13
3/6/04	No. 20	vs Northwest Missouri*	L 68-76	11
3/13/04	No. 2	vs Drury#	L 55-67	13
2004-05 Season				
12/11/04	No. 1	at Drury	W 64-53	4
12/29/04	No. 25	vs Missouri Western	W 77-66	1
1/5/05	No. 2	at Emporia State	L 60-67	1
2/23/05	No. 6	Emporia State	W 57-48	3
3/6/05	No. 7	vs Emporia State	W 63-41	3
3/12/05	No. 6	vs Angelo State@	W 76-67	3
3/14/05	No. 7	vs Emporia State!	W 63-51	3
3/23/05	No. 8	vs Charleston#	W 73-60	2
3/24/05	No. 18	vs Central Arkansas##	W 69-67	2
3/26/05	No. 3	vs Seattle Pacific###	W 70-53	2
2005-06 Season				
12/9/06	No. 24	Missouri Western	L 68-76	1
12/20/06	No. 7	vs Glenville State	W 69-57	5
1/2/07	No. 4	Emporia State	W 69-62	3
1/27/07	No. 2	at Missouri Western	L 47-49	3

Lady Blues head coach Ron McHenry is ... 19-16 all-time against ranked teams

17-8 all-time when both teams are ranked

* - MIAA Tournament
@ - NCAA South Central Regional Semifinals
! - NCAA South Central Regional Finals
- NCAA National Quarterfinals
- NCAA National Semifinals
- NCAA National Championship Game

THE COACHES ...

Washburn head coach

Ron McHenry has posted a 179-35 (.838) record overall and 94-25 (.782) record in the MIAA with four consecutive MIAA regular season championships and the 2005 NCAA National Championship. He was named the Lady Blues head coach prior to the 2000-01 season. He is third among active women's NCAA Division II coaches in winning percentage and has the 10th most wins in MIAA history. McHenry was named the MIAA's Coach of the Year in 2005 and in 2006 and the Division II Bulletin National Coach of the Year in 2005. (complete bio on page 2 of notes.)

Truman head coach

John Sloop is in his seventh year behind the helm of the women's basketball program at Truman. Sloop has a 71-113 career record as a head coach, and is a graduate of Maryville (Mo.) University. Sloop worked for legendary coach Charlie Spoonhour at both Missouri State and Saint Louis University. He moved to Truman as an assistant coach for the men's program in 1995 and was part of the Final Four team in 1998-99.

WBCA National Coaches Poll

Weekly Poll No. 10 - Feb. 6, 2007		LW	Record	Points
1. Florida Gulf Coast University - 18		4	22-0	657
2. University of North Dakota - 3		1	23-2	634
3. Missouri Western State - 4		2	21-1	625
4. Washburn University - (Kan.) - 1		5	19-2	624
5. Southern Connecticut State University - 1		3	20-1	590
6. Glenville State College (W. Va.)		6	20-2	585
7. Lewis University (Ill.) - 1		7	19-2	546
8. Delta State University (Miss.)		9	17-3	492
9. West Texas A&M University		10	19-3	469
10. Emporia State University (Kan.)		11	16-4	454
11. California State University, Chico		8	15-3	400
12. Grand Valley State University (Mich.)		12	17-4	369
13. Augustana College (S.D.)		13	22-4	366
14. Holy Family University (Penn.)		15	19-2	312
15. American International College (Mass.)		14	18-4	306
16. University of South Dakota		16	17-4	284
17. Clayton State University (Ga.)		17	18-3	263
18. University of California, San Diego		19	15-3	258
19. Regis University (Colo.)		23	17-4	156
20. Anderson University (S.C.)		25	16-3	135
21. Stonehill College (Mass.)		24	17-5	115
22. Carson-Newman College (Tenn.)		21	16-3	80
23. College of Saint Rose (N.Y.)		NR	18-5	71
24. Florida Institute of Technology		NR	17-4	67
25. Henderson State University (Ark.)		20	15-5	37

Others Receiving Votes: Valdosta State University (Ga.) - 31; Metropolitan State College of Denver (Colo.) - 29; Elizabeth City State University (N.C.) - 25; Northern State University (S.D.) - 25; Southern Illinois University Edwardsville - 15; North Carolina Central University - 14; Bentley College (Mass.) - 13; Minnesota State University, Moorhead - 13; Rollins College (Fla.) - 11; Barton College (N.C.) - 6; East Stroudsburg University (Pa.) - 6; Northern Kentucky University - 4; Arkansas Tech University - 3; Humboldt State University (Calif.) - 3; Saint Andrews Presbyterian (N.C.) - 2; Seattle Pacific University (Wash.) - 2; Texas A&M University, Commerce - 1; University Of Alaska, Anchorage - 1; Wingate University (N.C.) - 1.

2006-07 NCAA Regional Poll

Regional Poll No. 2 -- 2/7/07	D2 Record	Region	LW
1. Missouri Western State	19-1	16-1	1
2. West Texas A&M	19-3	14-1	3
3. Washburn	17-2	14-2	2
4. Emporia State	13-4	11-2	4
5. Texas A&M-Commerce	13-5	11-4	6
6. Angelo State	12-8	12-6	8
7. Southeastern Oklahoma State	14-6	12-6	9
8. Northwest Missouri State	10-8	8-6	10
9. Montana State-Billings	12-6	10-5	5
10. Tarleton State	10-6	9-6	NR

Lady Blues week by week in national poll

Preseason 6	5	—	3	10	—	4	15	—
1 — 2	6	—	2	11	—		16	—
2 — 1	7	—	2	12	—		17	—
3 — 5	8	—	3	13	—		18	—
4 — 5	9	—	5	14	—		19	—

LAST TIME OUT FOR THE LADY BLUES . . .

Lady Blues reach 20 wins for 6th straight season under McHenry

BOLIVAR, Mo. - The No. 4 Lady Blues had two players score 20 points on their way to a 76-56 win at Southwest Baptist Tuesday night. Washburn improved to 20-2 and 11-2 in the MIAA while the Lady Bearcats fell to 12-10 and 4-9 in the conference. WU will return home to host Truman Saturday afternoon at 1:30.

The Lady Blues 19-point halftime lead was threatened as the Lady Bearcats scored the first six points of the second half to get within 13. SBU then cut it to 13 again at 45-32. Washburn quickly slowed SBU with a 13-0 run with Corkey Stiger scoring eight of those points and at one point late in the half scoring 13 of Washburn's 15 points. She had 17 second half points and ended the night with 24, one off her season-high set Saturday at Pittsburg State. She was 10-of-16 from the field with three 3-pointers.

Brooke Ubelaker was the other Lady Blue to reach 20 points as she finished 8-of-12 from the field. Ubelaker scored 14 first half points off 5-of-7 shooting on her way to her 94th game scoring in double figures.

The Lady Blues led 40-21 at halftime after shooting 44 percent from the field and 5-of-8 from 3-point range. The Lady Bearcats committed 11 turnovers and shot 33 percent in the first half. In the second half SBU shot 48 percent but the Lady Blues shot 54 percent the final 20 minutes as they cruised to their 14th straight win over Southwest Baptist.

Megan Sullivan and Cindy Keeley led the Lady Blues with eight rebounds each and Sullivan had a career-high five assists. Washburn won the rebound battle 39-32 and survived the turnover battle, 15-12 after turning it over eight times in the second half. Livia Brito led the Lady Bearcats with 15 points.

WASHBURN/TRUMAN SERIES NOTES . . .

The Lady Blues lead the all-time series with Truman 31-8. The Lady Blues have won the last nine in the series. The Bulldogs' last win in the series was

Series History - Washburn leads 31-8

N30 1979	L 53-62	F5 2001 A	W 63-56
N28 1980 N	L 55-74	J5 2002 A	L 53-55
D1 1985	W 54-52	F2 2002	W 82-68
N25 1988	W 90-56	J4 2003	W 85-57
N25 1989	W 89-73	F1 2003 A	L 71-76
F3 1990 A	W 87-69	* M6 2003	W 77-48
F21 1990	W 93-73	J17 2004	W 73-55
F2 1991	W 88-71	F14 2004 A	W(2ot) 97-94
F20 1991 A	L 84-91	J15 2005 A	W 74-52
F1 1992 A	W 66-63	F12 2005	W 81-54
F20 1992	W 91-43	D30 2005 A	W 74-64
J30 1993	W 81-44	J28 2006	W 77-61
F17 1993 A	W 71-44	* M2 2006 N	W 63-36
F2 1994 A	W 88-54	J13 2007 A	W 83-58
F1 1995	W 82-66		
F7 1996	W 70-45		
J11 1997 A	W 63-61		
F3 1997	W 82-56		
J10 1998	W 65-53		
F2 1998 A	L 49-66		
J9 1999 A	L 68-78		
F1 1999	W 79-63		
J1 2000 A	L 60-63		
J31 2000	W(ot) 89-85		
J8 2001	W 63-52		

Schedule Legend

!NAIA District 10 Playoffs

^NAIA Bi-District Playoffs

*MIAA Postseason Tournament

#NCAA Tournament

##NCAA National Quarters

&NCAA National Semifinals

\$NCAA Championship Game

2006-07 MIAA Standings as of Feb. 8

	MIAA			OVERALL		
	W	L	Pct.	W	L	Pct.
x- MWSU (3)	12	1	0.923	23	1	0.958
x- WU (4)	11	2	0.846	20	2	0.909
x- ESU (10)	10	2	0.833	17	4	0.810
NWMSU	7	6	0.538	14	8	0.636
UCM	5	7	0.417	12	9	0.571
FHSU	4	9	0.308	12	9	0.571
SBU	4	9	0.308	12	10	0.545
MSSU	4	9	0.308	11	10	0.524
PSU	4	9	0.308	9	12	0.429
TSU	3	10	0.231	8	14	0.364

WBCA/USA Today/ESPN Division II ranking in parenthesis

x=Clinched berth in MIAA Championship Tournament

Past Results

Tuesday, February 6

*WU 76 @ SBU 56 Final

Wednesday, February 7

*ESU 72 @ MSSU 49 Final

*NWMSU 80 @ TSU 70 Final

*PSU 69 @ MWSU 77 Final

*UCM 73 @ FHSU 84 Final

Upcoming Schedule

Saturday, February 10

*ESU @ UCM , 1:30 PM

*NWMSU @ PSU , 1:30 PM

*TSU @ WU , 1:30 PM

*FHSU @ MWSU , 5:30 PM

*SBU @ MSSU , 5:30 PM

Monday, February 12

*FHSU @ SBU , 5:45 PM

Wednesday, February 14

*MSSU @ UCM , 5:30 PM

*MWSU @ TSU , 5:30 PM

*PSU @ ESU , 5:30 PM

*WU @ NWMSU , 5:30 PM

Thursday, February 15

FHSU @ Oklahoma Panhandle State , 5:30 p.m.

Saturday, February 17

*MSSU 0 @ NWMSU 0 , 1:30 PM

*TSU 0 @ FHSU 0 , 3:00 PM

*SBU 0 @ PSU 0 , 5:30 PM

*UCM 0 @ MWSU 0 , 5:30 PM

*WU 0 @ ESU 0 , 11 a.m., (Televised by CSTV)

Monday, February 19

*UCM @ ESU , 5:30 p.m.

Wednesday, February 21

*NWMSU @ MWSU , 5:30 PM

*PSU @ MSSU , 5:30 PM

*SBU @ UCM , 5:30 PM

*TSU @ ESU , 5:30 PM

*WU @ FHSU , 5:30 PM

Saturday, February 24

*PSU @ TSU , 1:30 PM

*ESU @ SBU , 5:30 PM

*FHSU @ NWMSU , 5:30 PM

*MWSU @ MSSU , 5:30 PM

*UCM @ WU , 5:30 PM

during the 2002-03 season by a score of 76-71 in Kirksville. The Lady Blues have won the last 19 games in Topeka as the Bulldogs won in their first trip to Topeka during the 1979-80 season, but have lost every game since then. The teams have met twice in the MIAA Tournament with the Lady Blues winning 77-48 in the quarterfinals in Kansas City on March 6, 2003 and again in the quarterfinals last season on March 2, 2006 in a 63-36 win in Kansas City.

LAST MEETING WITH THE BULLDOGS . . .

(Jan. 13, 2007) KIRKSVILLE, Mo. - The Lady Blues missed their first 10 shots but Brooke Ubelaker hit five 3-pointers in the first half to help the Lady Blues overcome a 16-2 deficit as they won 83-58 at Truman. With 17 points Ubelaker moved into fifth all-time at Washburn with 1,566 points. Corkey Stiger recorded eight steals setting a school record.

The Lady Blues had just two points the first half of the opening period on a pair of free throws from Amanda Holmes. She scored Washburn's first four points from the line and Corkey Stiger added another two from the stripe. Ubelaker broke Washburn's drought from the field when she hit a 3 at 9:59 and then another on WU's next possession made it an 18-9 game, TSU.

The Lady Blues took their first lead, 21-20 at 6:42 when Stiger made a lay-up. Truman regained the lead and built it to five but Washburn closed the half on a 13-2 run to take a 36-30 lead into the locker room.

The Lady Blues shot 40 percent in the first half after starting out 0-for-10. In the second half they shot 62 percent and ended the game hitting 52 percent of their shots. They built the lead to 20 at the 10:32 mark of the second half and then closed out the game with a lay-up from Jessica Mainz to give them a 25-point victory.

Holmes led Washburn with 19 points off 5-of-10 shooting and a 9-of-12 effort from the free throw line. She added 12 rebounds for her seventh double-double of the year and eighth of her career. Stiger had 16 points and to go along with the eight steals. She joined Mainz with four assists to lead the team.

ABOUT THE TRUMAN BULLDOGS . . .

The Bulldogs are 8-14 overall and 3-10 in the MIAA after falling to Northwest Missouri on Wednesday 80-70. The Bulldogs have lost their last four games.

Sophomore Georgia Mueller leads the Bulldogs in scoring with a 17.1 ppg average. She is also leads her team in rebounding with a 8.6 per game average. Candace McGee is the only other Bulldog averaging in double figures with 11.5 points per game.

LAST TIME OUT FOR TRUMAN . . .

(Feb. 7) Feb. 7, 2007 - Sophomore forward Georgia Mueller scored 25 points, including 17 in the second half, but it wasn't enough as the Northwest Missouri State Bearcats drained ten three-pointers in an 80-70 win over the Bulldogs Wednesday night in Pershing Arena.

The Bulldogs started out well, jumping ahead 27-21 at the 5:18 mark of the first half on a basket by junior guard Carmen McGee, but Northwest rattled off a 17-2 run to end the half and head into the locker room with a 38-29 lead. Three Bearcats scored eight points apiece to lead the green and white in the

opening frame.

Northwest expanded their lead to 17 points on a three-pointer by Lauren Williams with just under seven minutes to play in the game, but the 'Dogs, led by Mueller and junior guard Julia Montebello, chipped away and cut the deficit to seven with 50 seconds remaining. However, six straight made free throws in the final minute sealed the Bulldogs' fate as Northwest went on to sweep the season series with the 'Dogs.

Two players scored at will throughout the night – Williams for Northwest (26 points) and Mueller for Truman (25 points) – but it was Williams' supporting cast that stepped up more, as Mandi Schumacher added 17 points and six rebounds, while Meghan Brue scored 15 points. Montebello was the only other Bulldog in double-figures with 17.

Truman shot 51.9% for the contest, but Northwest was nearly as solid with a 47.5% clip. The Bearcats drained ten three-pointers and hit 88% of their free throws (14-of-16). Truman, meanwhile, hit just 29% of it's long-range bombs (5-of-17) and struggled from the charity stripe, hitting just 61% of its free throws (11-of-18).

LADY BLUES NOTES . . .

- #3 – Cindy Keeley – Averaging 9.4 points and 5.4 rebounds per game in MIAA play
- #4 – Amanda Holmes – Averaging 8.1 rebounds per game in MIAA play
- #10 – Jessica Aebi – 42 3-pointers is 17th all time
- #11 – Renata Germano – 12 of 17 from free throw line in the last 5 minutes of games this season
- #13 – Jessica Mainz – 12 assists and one turnovers in last three games
- #15 – Nikki Holmes – At least 1 field goal in last 10 of last 12 games
- #20 – Holly Henrichs – 4 of 4 from free throw line this season
- #21 – Corkey Stiger – Averaging 22.3 points in last three games (28 of 45 from the field - 62%)
- #23 – Stephanie Wittman – Played at PSU after missing MSSU game with hip injury
- #24 – Karla Tailele – Will redshirt this season with continuing knee problems
- #25 – Megan Sullivan – 5 assists vs Southwest Baptist was a career high
- #32 – Brooke Ubelaker – Has had 80 games with at least 5 rbs ... averaging 5.5 for 123-game career
- #33 – Hope Gregory – Will redshirt this season straining previous injury

LADY BLUES TIP-INS . . .

- Senior Brooke Ubelaker has started all 123 games of her Washburn career and she has scored in double figures in 94 games ... against Central Missouri, she became the sixth Lady Blue to record at least 1,500 points and 600 rebounds.
- Senior Cindy Keeley has played in 123 games at Washburn career and is 12th on the all-time 3-pointers made chart with 62 for her career.
- The Lady Blues bench has outscored their opponents bench this season 622-316.
- The Lady Blues have not allowed an opponent to shoot above

50 percent in a game in a streak of 61 contests - Angelo State was the last time to hit 50 percent of their shots in the first round of the NCAA Tournament in Springfield when they connected on 26 of 52 shots on March 12, 2005.

- The Lady Blues have not allowed an opponent to score 100 points in 241 straight games. The last foe to reach the century mark was on Jan. 27, 1999 when ESU scored 106 points in a 40-point win.
- The Lady Blues are 219-79 (.731) all-time in MIAA play.
- Washburn is 94-10 in games in Lee Arena under head coach Ron McHenry.
- Cindy Keeley moved into a tie for 19th in career blocks with 37. She also moved into 14th on the all-time steals chart with 131.

LADY BLUES IN LEE ARENA . . .

In their 23rd season in Lee Arena, the Lady Blues are 286-55 (.836) overall at home. The longest winning streak was 44 games from Dec. 1, 1990 to March 20, 1993.

The Lady Blues were 15-0 in Lee Arena last season, out scoring opponents by a 78.2-49.9 average. The Lady Blues were 13-1 in Lee Arena in 2003-04, 16-1 in 2002-03 and 15-1 in 2001-02. The Lady Blues have won 30 straight regular season non-conference games in Lee Arena. The last defeat by a non-conference team in the regular season was to Missouri-St. Louis in a 59-51 setback on Dec. 30, 2000.

Washburn is 94-10 (.901) in home games under Ron McHenry.

LADY BLUES HISTORY . . .

Washburn is 660-318 (.675 in 978 games) in its 38th season of intercollegiate action. Entering this season, the Lady Blues were 24th in Division II winning percentage and 18th in Division II wins.

LADY BLUES IN THE NATIONAL POLL . . .

(Feb. 6, 2007): The Washburn Lady Blues fell jumped from No. 5 in the USA Today/ESPN/WBCA Coaches Poll to No. 3 that was released today. The Lady Blues have been ranked in 72 straight weeks of the national poll dating back to the 2002-03 season. The Lady Blues have been ranked in the top 25 after being ranked in each poll the last four seasons, plus the last 15 of the 2002-03 season entering the poll on Dec. 11, 2002. Washburn spent the entire 2005-06 season as the No. 1 ranked team in the land before falling in the NCAA South Central Regional finals to Emporia State.

UP NEXT . . .

Following a home game against Truman on Feb. 10. The Lady Blues will then go on their longest road trip of the season as they will have three straight road games at Northwest Missouri on Feb. 14, Emporia State on Feb. 17 and Fort Hays State on Feb. 21, the Lady Blues will wrap up the regular season on Feb. 24 in Topeka against Central Missouri and celebrate senior day for six Washburn players: Brooke Ubelaker, Cindy Keeley, Megan Sullivan, Jessica Aebi and Nikki Holmes.

Numerical

3	Cindy Keeley	G	5-9	Sr.	Great Bend, Kan./Great Bend High School
4	Amanda Holmes	F	6-2	Jr.	Topeka, Kan./Texas Christian
10	Jessica Aebi	G	5-7	Sr.	Enid, Okla./Northeastern Oklahoma A&M
11	Renata Germano	C	6-2	So.	Rio de Janero, Brazil/Southeastern Illinois College
13	Jessica Mainz	G	5-9	So.	Topeka, Kan./Shawnee Heights High School
15	Nikki Holmes	G	5-10	Sr.	Arlington, Texas/Tyler Junior College
20	Holly Henrichs	G	5-5	Sr.	Dodge City, Kan./Dodge City High School
21	Sequorhea Stiger	G	5-9	Jr.	Hopkinsville, Ky./Trinity Valley Community College
23	Stephanie Wittman	G	5-10	So.	Salina, Kan./Sacred Heart High School
*24	Karla Taillele	G	5-6	Jr.	Laie, Hawaii/Hutchinson Community College
25	Megan Sullivan	F	6-1	Sr.	Spring Hill, Kan./Spring Hill High School
32	Brooke Ubelaker	F	5-11	Sr.	Osborne, Kan./Osborne High School
*33	Hope Gregory	G	5-10	Fr.	Cheney, Kan./Cheney High School

*-will receive medical redshirt this season

Alphabetical

10	Jessica Aebi	G	5-7	Sr.	Enid, Okla./Northeastern Oklahoma A&M
11	Renata Germano	C	6-2	So.	Rio de Janero, Brazil/Southeastern Illinois College
*33	Hope Gregory	G	5-10	Fr.	Cheney, Kan./Cheney High School
20	Holly Henrichs	G	5-5	Sr.	Dodge City, Kan./Dodge City High School
4	Amanda Holmes	F	6-2	Jr.	Topeka, Kan./Texas Christian
15	Nikki Holmes	G	5-10	Sr.	Arlington, Texas/Tyler Junior College
3	Cindy Keeley	G	5-9	Sr.	Great Bend, Kan./Great Bend High School
13	Jessica Mainz	G	5-9	So.	Topeka, Kan./Shawnee Heights High School
21	Sequorhea Stiger	G	5-9	Jr.	Hopkinsville, Ky./Trinity Valley Community College
25	Megan Sullivan	F	6-1	Sr.	Spring Hill, Kan./Spring Hill High School
*24	Karla Taillele	G	5-6	Jr.	Laie, Hawaii/Hutchinson Community College
32	Brooke Ubelaker	F	5-11	Sr.	Osborne, Kan./Osborne High School
23	Stephanie Wittman	G	5-10	So.	Salina, Kan./Sacred Heart High School

*-will receive medical redshirt this season

Head Coach: Ron McHenry (Washburn '84)

Washburn/career coaching record: 179-35 (.838)

Assistant Coaches: Dustin Odum and Toni Gross

Student Assistant Coaches: Carla Sintra, Lora Westling

Pronunciation Guide

10	Jessica Aebi	AB-ee
11	Renata Germano	Rah-NAH-ta GER-mah-no
13	Jessica Mainz	Maines
14	Karla Taillele	Tah-LAY-lay
21	Sequorhea Stiger	SAH-core-ee-ah STY-ger
32	Brooke Ubelaker	YOU-bah-laker

By Class

Seniors (6)	Sophomores (3)
Jessica Aebi	Jessica Mainz
Holly Henrichs	Stephanie Wittman
Nikki Holmes	Renata Germano
Cindy Keeley	Freshman (1)
Megan Sullivan	Hope Gregory
Brooke Ubelaker	
Juniors (4)	
KG Hellen	
Amanda Holmes	
Sequorhea Stiger	
Karla Taillele	

Geographical Breakdown**United States**

Kansas (8)	Hawaii (1)
Holly Henrichs (Dodge City)	Karla Taillele (Laie)
Amanda Holmes (Topeka)	Kentucky (1)
Cindy Keeley (Great Bend)	Sequorhea Stiger (Hopkinsville)
Jessica Mainz (Topeka)	Oklahoma (1)
Megan Sullivan (Spring Hill)	Jessica Aebi (Enid)
Brooke Ubelaker (Osborne)	Texas (1)
Stephanie Wittman (Salina)	Nikki Holmes (Arlington)
Hope Gregory (Cheney)	
Michigan (1)	
KG Hellen (Detroit)	

South America

Brazil (1)
Renata Germano (Rio de Janero)

2006-07 Season Statistics (20-2, 11-2 MIAA, 11-1 Home, 5-1 Away, 4-0 Neutral)

No.	Name	GP	GS	Min	Avg	FG	FGA	Pct.	3FG	3FGA	Pct.	FT	FTA	Pct.	Off.	Def.	Tot.	Avg.	PF	FO	A	TO	Blk.	Std.	Pts.	Avg.
32	Ubelaker,Brooke	22	22	645	29.3	115	241	.477	61	145	.421	42	49	.857	35	82	117	5.3	31	0	44	29	8	24	333	15.1
21	Stiger,Corkey	22	0	526	23.9	112	244	.459	31	98	.316	41	49	.837	34	45	79	3.6	31	0	67	34	1	49	296	13.5
04	Holmes,Amanda	22	22	509	23.1	89	184	.484	8	24	.333	72	106	.679	53	109	162	7.4	65	1	28	54	29	30	258	11.7
03	Keeley,Cindy	22	22	618	28.1	71	148	.480	31	75	.413	26	33	.788	38	72	110	5.0	35	1	55	26	9	32	199	9.0
10	Aebi,Jessica	22	22	634	28.8	59	140	.421	19	53	.358	22	31	.710	1	41	42	1.9	36	0	82	45	7	29	159	7.2
25	Sullivan,Megan	22	22	383	17.4	54	124	.435	0	0	.000	13	24	.542	35	42	77	3.5	35	0	26	30	4	17	121	5.5
11	Germano,Renata	20	0	210	10.5	32	69	.464	0	0	.000	26	38	.684	19	37	56	2.8	36	1	9	23	14	2	90	4.5
15	Holmes,Nikki	21	0	214	10.2	35	90	.389	9	38	.237	7	12	.583	8	42	50	2.4	21	0	13	25	4	12	86	4.1
24	x-Taillele,Karla	2	0	10	5.0	3	3	1.000	1	1	1.000	1	1	1.000	0	0	0	0.0	2	0	1	0	0	1	8	4.0
13	Mainz,Jessica	22	0	406	18.5	31	58	.534	1	2	.500	24	42	.571	22	46	68	3.1	23	0	59	18	4	29	87	4.0
05	x-Hellen,K.G.	9	0	97	10.8	16	34	.471	0	3	.000	1	2	.500	5	6	11	1.2	12	0	7	6	1	9	33	3.7
23	Wittman,Steph.	15	0	66	4.4	3	18	.167	1	6	.167	4	6	.667	5	8	13	0.9	1	0	6	4	2	4	11	0.7
20	Henrichs,Holly	17	0	64	3.8	2	3	.667	1	1	1.000	4	4	1.000	1	4	5	0.3	6	0	5	5	0	2	9	0.5
33	x-Gregory,Hope	5	0	18	3.6	0	1	.000	0	0	.000	2	2	1.000	2	4	6	1.2	1	0	1	1	0	0	2	0.4
TM TEAM.....															27	44	71	3.2	0			2				
Total.....						622	1357	.458	163	446	.365	285	399	.714	285	582	867	39.4	335	3	403	302	83	240	1692	76.9
Opponents.....						411	1171	.351	90	323	.279	237	338	.701	215	488	703	32.0	333	2	222	441	45	143	1149	52.2

2006-07 MIAA Game Statistics (11-2 overall - 6-1 Home, 5-1 Away)

No.	Name	GP	GS	Min	Avg	FG	FGA	Pct.	3FG	3FGA	Pct.	FT	FTA	Pct.	Off.	Def.	Tot.	Avg.	PF	FO	A	TO	Blk.	Std.	Pts.	Avg.
32	Ubelaker,Brooke	13	13	397	30.5	68	145	.469	35	93	.376	27	31	.871	17	44	61	4.7	21	0	20	17	6	19	198	15.2
21	Stiger,Corkey	13	0	335	25.8	71	163	.436	14	55	.255	18	24	.750	25	32	57	4.4	15	0	39	23	1	32	174	13.4
04	Holmes,Amanda	13	13	308	23.7	55	118	.466	1	13	.077	59	87	.678	34	67	101	7.8	41	1	15	25	18	11	170	13.1
03	Keeley,Cindy	13	13	399	30.7	45	84	.536	17	39	.436	15	20	.750	20	46	66	5.1	21	1	29	19	8	20	122	9.4
10	Aebi,Jessica	13	13	409	31.5	33	86	.384	11	34	.324	11	16	.688	1	25	26	2.0	22	0	44	32	3	16	88	6.8
13	Mainz,Jessica	13	0	271	20.8	22	44	.500	1	2	.500	15	27	.556	21	28	49	3.8	14	0	36	16	3	19	60	4.6
25	Sullivan,Megan	13	13	221	17.0	23	62	.371	0	0	.000	9	15	.600	20	28	48	3.7	22	0	18	15	4	5	55	4.2
15	Holmes,Nikki	13	0	121	9.3	19	51	.373	2	18	.111	4	5	.800	3	26	29	2.2	15	0	6	17	1	8	44	3.4
11	Germano,Renata	11	0	85	7.7	9	19	.474	0	0	.000	9	12	.750	6	13	19	1.7	15	0	3	10	6	0	27	2.5
23	Wittman,Steph.	7	0	29	4.1	2	9	.222	1	2	.500	0	0	.000	2	5	7	1.0	1	0	3	2	0	2	5	0.7
20	Henrichs,Holly	9	0	25	2.8	1	1	1.000	0	0	.000	4	4	1.000	1	0	1	0.1	2	0	1	0	0	2	6	0.7
TM TEAM.....															20	28	48	3.7	0			2				
Total.....						348	782	.445	82	256	.320	171	241	.710	170	342	512	39.4	189	2	214	178	50	134	949	73.0
Opponents.....						250	690	.362	62	203	.305	145	207	.700	123	293	416	32.0	196	1	137	240	28	90	707	54.4

2006-07 Home Game Statistics (10-1 overall, 6-1 MIAA)

No.	Name	GP	GS	Min	Avg	FG	FGA	Pct.	3FG	3FGA	Pct.	FT	FTA	Pct.	Off.	Def.	Tot.	Avg.	PF	FO	A	TO	Blk.	Std.	Pts.	Avg.
32	Ubelaker,Brooke	12	12	343	28.6	61	127	.480	30	71	.423	31	35	.886	16	50	66	5.5	12	0	24	13	4	11	183	15.3
21	Stiger,Corkey	12	0	278	23.2	54	126	.429	19	55	.345	16	21	.762	23	24	47	3.9	12	0	38	21	1	26	143	11.9
04	Holmes,Amanda	12	12	254	21.2	41	87	.471	5	12	.417	43	58	.741	29	68	97	8.1	35	0	13	32	21	18	130	10.8
03	Keeley,Cindy	12	12	317	26.4	45	87	.517	21	49	.429	11	14	.786	21	40	61	5.1	23	1	21	14	4	21	122	10.2
10	Aebi,Jessica	12	12	337	28.1	33	84	.393	8	31	.258	15	17	.882	0	24	24	2.0	19	0	48	27	4	17	89	7.4
25	Sullivan,Megan	12	12	221	18.4	33	71	.465	0	0	.000	6	10	.600	23	23	46	3.8	18	0	13	12	3	9	72	6.0
11	Germano,Renata	11	0	147	13.4	21	49	.429	0	0	.000	20	29	.690	13	21	34	3.1	21	1	5	9	9	2	62	5.6
15	Holmes,Nikki	11	0	122	11.1	25	62	.403	5	25	.200	4	7	.571	6	26	32	2.9	16	0	8	14	3	8	59	5.4
13	Mainz,Jessica	12	0	225	18.8	19	35	.543	0	0	.000	16	21	.762	13	21	34	2.8	11	0	33	6	4	21	54	4.5
05	x-Hellen,K.G.	5	0	56	11.2	10	21	.476	0	1	.000	1	2	.500	4	4	8	1.6	8	0	2	3	0	6	21	4.2
23	Wittman,Steph.	9	0	46	5.1	3	13	.231	1	4	.250	3	4	.750	3	6	9	1.0	0	0	6	3	1	4	10	1.1
33	x-Gregory,Hope	3	0	13	4.3	0	0	.000	0	0	.000	2	2	1.000	1	4	5	1.7	1	0	1	0	0	0	2	0.7
20	Henrichs,Holly	10	0	39	3.9	0	1	.000	0	0	.000	2	2	1.000	1	2	3	0.3	3	0	2	2	0	1	2	0.2
24	x-Taillele,Karla	1	0	2	2.0	0	0	.000	0	0	.000	0	0	.000	0	0	0	0.0	2	0	0	0	0	0	0	0.0
TM TEAM.....															15	15	30	2.5	0			1				
Total.....						345	763	.452	89	248	.359	170	222	.766	168	328	496	41.3	181	2	214	157	54	144	949	79.1
Opponents.....						223	649	.344	54	184	.293	126	181	.696	118	263	381	31.8	184	1	104	242	28	80	626	52.2

2006-07 Away and Neutral Site Statistics (9-1, 5-1 MIAA, 5-1 Away, 4-0 Neutral)

No.	Name	GP	GS	Min	Avg	FG	FGA	Pct.	3FG	3FGA	Pct.	FT	FTA	Pct.	Off.	Def.	Tot.	Avg.	PF	FO	A	TO	Blk.	Std.	Pts.	Avg.						
21	Stiger,Corkey	10	0	248	24.8	58	118	.492	12	43	.279	25	28	.893	11	21	32	3.2	19	0	29	13	0	23	153	15.3						
32	Ubelaker,Brooke	10	10	302	30.2	54	114	.474	31	74	.419	11	14	.786	19	32	51	5.1	19	0	20	16	4	13	150	15.0						
04	Holmes,Amanda	10	10	255	25.5	48	97	.495	3	12	.250	29	48	.604	24	41	65	6.5	30	1	15	22	8	12	128	12.8						
24	x-Taillele,Karla	1	0	8	8.0	3	3	1.000	1	1	1.000	1	1	1.000	0	0	0	0.0	0	0	1	0	0	1	8	8.0						
03	Keeley,Cindy	10	10	301	30.1	26	61	.426	10	26	.385	15	19	.789	17	32	49	4.9	12	0	34	12	5	11	77	7.7						
10	Aebi,Jessica	10	10	297	29.7	26	56	.464	11	22	.500	7	14	.500	1	17	18	1.8	17	0	34	18	3	12	70	7.0						
25	Sullivan,Megan	10	10	162	16.2	21	53	.396	0	0	.000	7	14	.500	12	19	31	3.1	17	0	13	18	1	8	49	4.9						
13	Mainz,Jessica	10	0	181	18.1	12	23	.522	1	2	.500	8	21	.381	9	25	34	3.4	12	0	26	12	0	8	33	3.3						
11	Germano,Renata	9	0	63	7.0	11	20	.550	0	0	.000	6	9	.667	6	16	22	2.4	15	0	4	14	5	0	28	3.1						
05	x-Hellen,K.G.	4	0	41	10.3	6	13	.462	0	2	.000	0	0	.000	1	2	3	0.8	4	0	5	3	1	3	12	3.0						
15	Holmes,Nikki	10	0	92	9.2	10	28	.357	4	13	.308	3	5	.600	2	16	18	1.8	5	0	5	11	1	4	27	2.7						
20	Henrichs,Holly	7	0	25	3.6	2	2	1.000	1	1	1.000	2	2	1.000	0	2	2	0.3	3	0	3	3	0	1	7	1.0						
23	Wittman,Steph.	6	0	20	3.3	0	5	.000	0	2	.000	1	2	.500	2	2	4	0.7	1	0	0	1	1	0	1	0.2						
33	x-Gregory,Hope	2	0	5	2.5	0	1	.000	0	0	.000	0	0	.000	1	0	1	0.5	0	0	0	1	0	0	0	0.0						
TM TEAM.....																		12	29	41	4.1	0										
Total.....		10						277	594	.466	74	198	.374	115	177	.650	117	254	371	37.1	154	1	189	145	29	96	743	74.3				
Opponents.....		10						188	522	.360	36	139	.259	111	157	.707	97	225	322	32.2	149	1	118	199	17	63	523	52.3				



2006-07 Season Results (20-2, 11-2 MIAA, 11-1 Home, 5-1 Away, 4-0 Neutral)

Date	Opponent	W/L	Score	Att.	High Points	High Rebounds
11/17/06	! vs Southwestern Oklahoma	W	81-40	751	(15)Keeley,Cindy	(6)Holmes,Amanda
11/18/06	! vs Cameron	W	93-65	823	(17)Stiger,Corkey	(10)Holmes,Amanda
11/24/06	@ CAMERON	W	89-66	2035	(18)Ubelaker,Brooke	(13)Keeley,Cindy
11/25/06	@ LYNN	W	90-40	2375	(17)Ubelaker,Brooke	(11)Holmes,Amanda
12/04/06	SOUTHWESTERN (KAN.)	W	69-36	1950	(14)Sullivan,Megan	(12)Holmes,Amanda
12/09/06	* No. 24 MISSOURI WESTERN	L	68-76	3050	(16)Holmes,Amanda	(10)Holmes,Amanda
12/12/06	BENEDICTINE	W	81-65	2250	(20)Stiger,Corkey	(5)Stiger,Corkey (5)Holmes,Amanda
12/16/06	LINCOLN	W	81-29	1850	(18)Ubelaker,Brooke	(11)Ubelaker,Brooke
12/19/06	# vs Northwood Univ.	W	90-44	50	(23)Ubelaker,Brooke	(8)Germano,Renata
12/20/06	# vs No. 7 Glenville State College	W	69-57	139	(15)Ubelaker,Brooke	(7)Ubelaker,Brooke
12/30/06	* at Central Missouri	W	66-44	1600	(17)Ubelaker,Brooke	(8)Keeley,Cindy
01/03/07	* No. 4 EMPORIA STATE	W	69-62	3875	(16)Holmes,Amanda	(12)Holmes,Amanda
01/06/07	* NORTHWEST MISSOURI	W	71-57	2750	(18)Ubelaker,Brooke	(13)Holmes,Amanda
01/10/07	* FORT HAYS STATE	W	78-34	2400	(16)Holmes,Amanda	(8)Keeley,Cindy
01/13/07	* at Truman	W	83-58	343	(19)Holmes,Amanda	(12)Holmes,Amanda
01/17/07	* SOUTHWEST BAPTIST	W	88-56	2150	(18)Ubelaker,Brooke	(8)Stiger,Corkey
01/20/07	* PITTSBURG STATE	W	84-55	1975	(21)Ubelaker,Brooke	(8)Ubelaker,Brooke
01/24/07	* at Missouri Southern	W	65-54	730	(13)Holmes,Amanda	(9)Holmes,Amanda
01/27/07	* at Missouri Western	L	47-49	3750	(17)Holmes,Amanda	(9)Keeley,Cindy
02/01/07	* MISSOURI SOUTHERN	W	81-50	2800	(19)Keeley,Cindy	(7)Holmes,Amanda
02/03/07	* at Pittsburg State	W	73-56	747	(25)Stiger,Corkey	(9)Holmes,Amanda
02/06/07	* at Southwest Baptist	W	76-56	644	(24)Stiger,Corkey	(8)Keeley,Cindy (8)Sullivan,Megan

! = Candlewood Suites/ESU Classic - Emporia, Kan.

@ = Premier Mortgage/AM 580 WIBW Radio Holiday Classic - Topeka, Kan.

= Hoop-N-Surf Classic - Honolulu, Hawaii

* = MIAA game

**Washburn Points/Rebounds/Assists in 2006-07**

Opponent	Date	Score	WL	03 KEELEY	04 HOLMES,A	05 HELLEN	10 AEBI	11 GERMANO	13 MAINZ	15 HOLMES,N.	20 HENRICH	21 STIGER
vs Southwestern Oklahoma	11/17/06	81-40	W	15-4-2	9-6-1	4-1-0	8-2-6	3-2-1	0-1-5	2-3-0	3-0-0	13-0-1
vs Cameron	11/18/06	93-65	W	3-3-5	14-10-2	4-0-2	14-1-4	10-5-0	3-1-1	9-2-1	0-0-1	17-4-4
CAMERON	11/24/06	89-66	W	11-13-2	0-5-0	8-2-1	15-2-6	7-4-1	5-1-0	6-4-1	0-0-0	16-0-3
LYNN	11/25/06	90-40	W	8-5-3	15-11-1	5-3-0	8-0-5	10-5-1	8-4-3	DNP	0-0-0	7-3-4
SOUTHWESTERN (KAN.)	12/04/06	69-36	W	5-5-0	13-12-2	2-2-0	6-2-4	2-5-0	4-2-2	2-3-0	0-0-0	9-1-1
MISSOURI WESTERN	12/09/06	68-76	L	9-7-0	16-10-0	DNP	6-3-1	2-1-0	4-1-0	2-0-0	DNP	14-3-8
BENEDICTINE	12/12/06	81-65	W	7-1-1	3-5-1	6-0-1	4-2-2	16-4-1	0-2-4	7-2-3	0-1-0	20-5-5
LINCOLN	12/16/06	81-29	W	12-6-5	11-4-5	0-1-0	0-2-6	6-3-0	4-1-4	11-4-1	0-1-2	11-1-1
vs Northwood Univ.	12/19/06	90-44	W	8-3-4	10-7-1	2-2-3	5-1-2	9-8-1	2-3-3	5-3-1	0-2-1	21-3-2
vs Glenville State College	12/20/06	69-57	W	8-4-4	13-1-0	2-0-0	11-4-3	0-1-1	1-4-1	0-0-0	DNP	8-5-7
at Central Missouri	12/30/06	66-44	W	9-8-3	6-4-4	DNP	6-3-2	0-1-0	5-2-0	5-1-0	2-0-0	13-4-3
EMPORIA STATE	01/03/07	69-62	W	7-0-1	16-12-1	DNP	10-3-3	DNP	4-2-0	8-1-0	DNP	8-6-6
NORTHWEST MISSOURI	01/06/07	71-57	W	7-3-4	10-13-0	DNP	7-1-2	7-3-1	2-5-1	6-5-3	0-0-0	14-6-1
FORT HAYS STATE	01/10/07	78-34	W	15-8-2	16-5-1	DNP	4-1-6	3-5-0	5-3-0	6-5-0	0-0-0	7-7-2
at Truman	01/13/07	83-58	W	7-0-2	19-12-0	DNP	9-3-3	2-3-0	5-5-4	4-4-1	2-0-1	16-3-4
SOUTHWEST BAPTIST	01/17/07	88-56	W	11-5-1	16-7-1	DNP	8-2-5	9-3-0	8-4-5	2-4-0	0-0-0	6-8-1
PITTSBURG STATE	01/20/07	84-55	W	11-2-2	5-6-0	DNP	10-3-4	0-1-1	4-4-7	7-3-0	2-1-0	13-5-2
at Missouri Southern	01/24/07	65-54	W	9-3-4	13-9-3	DNP	9-1-3	DNP	6-3-4	0-0-0	DNP	12-1-1
at Missouri Western	01/27/07	47-49	L	3-9-3	17-3-1	DNP	2-2-1	0-0-0	4-7-3	2-0-0	DNP	4-8-4
MISSOURI SOUTHERN	02/01/07	81-50	W	19-6-0	9-7-1	DNP	11-3-4	0-0-0	6-5-7	2-1-0	0-0-0	18-2-4
at Pittsburg State	02/03/07	73-56	W	8-7-4	19-9-2	DNP	6-0-7	0-0-0	2-5-4	0-0-0	0-0-0	25-2-1
at Southwest Baptist	02/06/07	76-56	W	7-8-3	8-4-1	DNP	0-1-3	4-2-1	5-3-1	0-5-2	0-0-0	24-2-2

Opponent	Date	Score	WL	23 WITTMAN	24 TAILELE	25 SULLIVAN	32 UBELAKER	33 GREGORY
vs Southwestern Oklahoma	11/17/06	81-40	W	0-2-0	8-0-1	2-3-1	14-3-6	0-0-0
vs Cameron	11/18/06	93-65	W	0-0-0	DNP	8-2-0	11-7-4	0-1-0
CAMERON	11/24/06	89-66	W	1-0-1	DNP	2-2-1	18-5-4	0-3-0
LYNN	11/25/06	90-40	W	0-2-1	DNP	10-5-0	17-7-0	2-1-1
SOUTHWESTERN (KAN.)	12/04/06	69-36	W	2-0-0	0-0-0	14-6-2	10-7-4	0-1-0
MISSOURI WESTERN	12/09/06	68-76	L	DNP	DNP	2-5-1	13-9-1	DNP
BENEDICTINE	12/12/06	81-65	W	0-0-1	DNP	9-4-1	9-3-3	DNP
LINCOLN	12/16/06	81-29	W	2-2-0	DNP	6-4-0	18-11-1	DNP
vs Northwood Univ.	12/19/06	90-44	W	1-0-0	DNP	4-2-2	23-6-2	DNP
vs Glenville State College	12/20/06	69-57	W	DNP	DNP	11-1-1	15-7-0	DNP
at Central Missouri	12/30/06	66-44	W	0-2-0	DNP	3-5-1	17-6-0	DNP
EMPORIA STATE	01/03/07	69-62	W	DNP	DNP	4-7-2	12-3-1	DNP
NORTHWEST MISSOURI	01/06/07	71-57	W	0-0-0	DNP	0-1-1	18-5-4	DNP
FORT HAYS STATE	01/10/07	78-34	W	2-1-1	DNP	7-2-1	13-6-1	DNP
at Truman	01/13/07	83-58	W	DNP	DNP	2-1-2	17-2-2	DNP
SOUTHWEST BAPTIST	01/17/07	88-56	W	0-3-2	DNP	10-1-3	18-1-2	DNP
PITTSBURG STATE	01/20/07	84-55	W	3-1-0	DNP	8-5-0	21-8-1	DNP
at Missouri Southern	01/24/07	65-54	W	DNP	DNP	6-4-0	10-4-3	DNP
at Missouri Western	01/27/07	47-49	L	DNP	DNP	3-1-0	12-7-1	DNP
MISSOURI SOUTHERN	02/01/07	81-50	W	DNP	DNP	0-4-1	16-1-2	DNP
at Pittsburg State	02/03/07	73-56	W	0-0-0	DNP	3-4-1	10-6-1	DNP
at Southwest Baptist	02/06/07	76-56	W	0-0-0	DNP	7-8-5	21-3-1	DNP

2006-07 Team Game-by-Game Comparison

Opponent	1st	2nd	Score	Mar	Total FG	FG Pct	3-Pointers	3FG Pct	Free Throws	FT Pct	Rebounds	Mar	Assist	TOver	Block	Steal	Fouls
vs Southwestern Okla.	46/24	35/16	81-40	+41	30-66/17-41	.455/.415	13-29/1-3	.448/.333	8-10/5-14	.800/.357	30/34	(4)	24/15	8/28	1/3	16/5	16/9
vs Cameron	43/38	50/27	93-65	+28	33-67/22-63	.493/.349	11-25/3-11	.440/.273	16-22/18-20	.727/.900	41/36	+5	24/15	13/18	2/0	6/7	19/22
Cameron	34/25	55/41	89-66	+23	32-67/23-61	.478/.377	8-25/6-18	.320/.333	17-24/14-18	.708/.778	42/35	+7	20/9	17/21	1/1	10/8	21/19
Lynn	48/18	42/22	90-40	+50	30-61/15-64	.492/.234	7-14/1-17	.500/.059	23-28/9-18	.821/.500	48/37	+11	19/8	13/19	2/2	13/7	17/20
Southwestern (Kan.)	29/24	40/12	69-36	+33	27-67/14-52	.403/.269	8-19/4-15	.421/.267	7-13/4-6	.538/.667	47/33	+14	15/5	10/19	10/3	13/3	12/14
Missouri Western	37/38	31/38	68-76	(8)	25-61/26-56	.410/.464	3-12/8-17	.250/.471	15-20/16-20	.750/.800	42/28	+14	11/14	20/14	4/4	9/8	14/15
Benedictine	42/29	39/36	81-65	+16	32-67/25-51	.478/.490	5-14/6-15	.357/.400	12-15/9-12	.800/.750	31/30	+1	23/11	14/26	2/4	18/6	14/12
Lincoln	32/16	49/13	81-29	+52	29-62/10-46	.468/.217	15-30/1-11	.500/.091	8-10/8-9	.800/.889	42/26	+16	25/3	11/22	6/2	12/6	8/8
Northwood	49/17	41/27	90-44	+46	34-62/13-48	.548/.271	11-21/1-11	.524/.091	11-18/17-26	.611/.654	41/26	+15	22/4	21/24	6/0	10/6	25/16
Glenville State	33/26	36/31	69-57	+12	27-56/22-55	.482/.400	3-13/5-19	.231/.263	12-18/8-8	.667/1.000	33/30	+3	17/15	17/24	3/2	8/5	14/17
Central Missouri	29/26	37/18	66-44	+22	26-54/14-48	.481/.292	5-21/5-17	.238/.294	9-16/11-18	.563/.611	42/28	+14	13/10	16/18	2/0	9/11	12/12
EMPORIA STATE	40/29	29/33	69-62	+7	20-59/21-54	.339/.389	6-18/7-17	.333/.412	23-28/13-18	.821/.722	36/41	(5)	14/11	7/18	3/4	11/5	17/21
NORTHWEST MO.	34/20	37/37	71-57	+14	29-67/17-53	.433/.321	6-28/3-15	.214/.200	7-12/20-29	.583/.690	45/36	+9	17/8	15/14	6/2	2/11	21/15
FORT HAYS STATE	37/13	41/21	78-34	+44	28-62/13-58	.452/.224	6-16/3-15	.375/.200	16-19/5-8	.842/.625	50/28	+22	14/6	16/24	12/0	13/9	12/17
Truman	36/30	47/28	83-58	+25	28-54/20-53	.519/.377	7-14/6-18	.500/.333	20-25/12-18	.800/.667	36/28	+8	19/12	15/17	3/1	12/5	18/16
SW BAPTIST	40/31	48/25	88-56	+32	35-69/22-57	.507/.386	5-21/6-18	.238/.333	13-18/6-9	.722/.667	40/31	+9	20/11	14/26	4/2	19/8	12/9
PITTSBURG STATE	36/27	48/28	84-55	+29	32-64/18-54	.500/.333	9-28/5-17	.321/.294	11-15/14-21	.733/.667	42/31	+11	17/10	9/14	3/1	11/3	20/15
Missouri Southern	39/28	26/26	65-54	+11	23-54/20-51	.426/.392	8-19/2-11	.421/.182	11-16/12-13	.688/.923	28/37	(9)	18/12	14/22	3/2	10/4	11/13
Missouri Western	25/24	22/25	47-49	(2)	20-56/18-55	.357/.327	3-24/3-20	.125/.150	4-13/10-14	.308/.714	41/37	+4	13/13	18/13	2/1	9/11	10/14
MISSOURI SOUTHERN	44/20	37/30	81-50	+31	26-57/19-43	.456/.442	11-23/4-9	.478/.444	18-20/8-13	.900/.615	31/25	+6	19/8	11/25	1/3	13/6	13/19
Pittsburg State	27/24	46/32	73-56	+17	27-65/19-53	.415/.358	5-18/5-9	.278/.556	14-21/13-14	.667/.929	40/34	+6	20/9	11/20	6/7	9/1	14/16
Southwest Baptist	40/21	36/35	76-56	+20	29-60/23-55	.483/.418	8-14/5-20	.571/.250	10-18/5-12	.556/.417	39/32	+7	19/13	12/15	1/1	7/8	15/14

2006-07 Team Game-by-Game Highs

Opponent	Date	Score	WL	POINTS	REBOUNDS	ASSISTS	STEALS	BLOCKS SHOTS
vs Southwestern Oklahoma	11/17/06	81-40	W	15-Keeley,Cindy	6-Holmes,Amanda	6-Aebi,Jessica Ubelaker,Brooke	4-Aebi,Jessica	1-Wittman,Stephanie
vs Cameron	11/18/06	93-65	W	17-Stiger,Corkey	10-Holmes,Amanda	5-Keeley,Cindy	3-Aebi,Jessica	1-Hellen,K.G. Aebi,Jessica
CAMERON	11/24/06	89-66	W	18-Ubelaker,Brooke	13-Keeley,Cindy	6-Aebi,Jessica	2-Sullivan,Megan Keeley,Cindy Holmes,Nikki	1-Keeley,Cindy
LYNN	11/25/06	90-40	W	17-Ubelaker,Brooke	11-Holmes,Amanda	5-Aebi,Jessica	4-Stiger,Corkey	1-Holmes,Amanda Germano,Renata
SOUTHWESTERN (KAN.)	12/04/06	69-36	W	14-Sullivan,Megan	12-Holmes,Amanda	4-Aebi,Jessica Ubelaker,Brooke	4-Holmes,Amanda	4-Holmes,Amanda
MISSOURI WESTERN	12/09/06	68-76	L	16-Holmes,Amanda	10-Holmes,Amanda	8-Stiger,Corkey	4-Stiger,Corkey	2-Holmes,Amanda
BENEDICTINE	12/12/06	81-65	W	20-Stiger,Corkey	5-Holmes,Amanda Stiger,Corkey	5-Stiger,Corkey	6-Mainz,Jessica	1-Germano,Renata Mainz,Jessica
LINCOLN	12/16/06	81-29	W	18-Ubelaker,Brooke	11-Ubelaker,Brooke	6-Aebi,Jessica	4-Holmes,Amanda	3-Germano,Renata
vs Northwood Univ.	12/19/06	90-44	W	23-Ubelaker,Brooke	8-Germano,Renata	4-Keeley,Cindy	3-Holmes,Amanda	3-Germano,Renata
vs Glenville State College	12/20/06	69-57	W	15-Ubelaker,Brooke	7-Ubelaker,Brooke	7-Stiger,Corkey	3-Stiger,Corkey	2-Holmes,Amanda
at Central Missouri	12/30/06	66-44	W	17-Ubelaker,Brooke	8-Keeley,Cindy	4-Holmes,Amanda	3-Mainz,Jessica	2-Keeley,Cindy
EMPORIA STATE	01/03/07	69-62	W	16-Holmes,Amanda	12-Holmes,Amanda	6-Stiger,Corkey	3-Keeley,Cindy	1-Keeley,Cindy Holmes,Amanda Ubelaker,Brooke
NORTHWEST MISSOURI	01/06/07	71-57	W	18-Ubelaker,Brooke	13-Holmes,Amanda	4-Keeley,Cindy Ubelaker,Brooke	1-Keeley,Cindy Ubelaker,Brooke	2-Germano,Renata
FORT HAYS STATE	01/10/07	78-34	W	16-Holmes,Amanda	8-Keeley,Cindy	6-Aebi,Jessica	4-Keeley,Cindy	6-Holmes,Amanda
at Truman	01/13/07	83-58	W	19-Holmes,Amanda	12-Holmes,Amanda	4-Stiger,Corkey Mainz,Jessica	8-Stiger,Corkey	2-Ubelaker,Brooke
SOUTHWEST BAPTIST	01/17/07	88-56	W	18-Ubelaker,Brooke	8-Stiger,Corkey	5-Aebi,Jessica Mainz,Jessica	5-Stiger,Corkey	3-Holmes,Amanda
PITTSBURG STATE	01/20/07	84-55	W	21-Ubelaker,Brooke	8-Ubelaker,Brooke	7-Mainz,Jessica	3-Stiger,Corkey	2-Sullivan,Megan
at Missouri Southern	01/24/07	65-54	W	13-Holmes,Amanda	9-Holmes,Amanda	4-Keeley,Cindy Mainz,Jessica	3-Aebi,Jessica	3-Keeley,Cindy
at Missouri Western	01/27/07	47-49	L	17-Holmes,Amanda	9-Keeley,Cindy	4-Stiger,Corkey	2-Holmes,Amanda Ubelaker,Brooke Mainz,Jessica	2-Holmes,Amanda
MISSOURI SOUTHERN	02/01/07	81-50	W	19-Keeley,Cindy	7-Holmes,Amanda	7-Mainz,Jessica	5-Mainz,Jessica	1-Holmes,Amanda
at Pittsburg State	02/03/07	73-56	W	25-Stiger,Corkey	9-Holmes,Amanda	7-Aebi,Jessica	3-Stiger,Corkey Ubelaker,Brooke Keeley,Cindy	2-Holmes,Amanda Aebi,Jessica
at Southwest Baptist	02/06/07	76-56	W	24-Stiger,Corkey	8-Sullivan,Megan Keeley,Cindy	5-Sullivan,Megan	3-Stiger,Corkey	1-Germano,Renata

Washburn record when...

Leading at the half	20-1
Trailing at the half	0-1
Tied at the half	0-0
Leading with 5:00 remaining	20-0
Trailing with 5:00 remaining	0-2
Tied with 5:00 remaining	0-0
Playing in overtime games	0-0
Outrebounding opponents	17-2
Opponents outrebounding	3-0
Having same rebound total	0-0
Having more steals	18-1
Opponent has more steals	2-1
Having same steal total	0-0
Having more blocks	12-1
Opponent has more blocks	5-0
Having same blocks total as opponent	3-1
Having more fouls	9-0
Opponent has more fouls	9-2
Having same foul total as opponent	2-0
Turning the ball over more	2-2
Opponent turns the ball over more	18-0
Having same turnover total as opponent	0-0
Making more free throws than opponents	12-0
Making less free throws than opponents	6-2
Making same number of free throws as opponents	1-0
More free throws attempts than opponents	15-0
Less free throws attempts than opponents	5-1
Having same free throw attempts as opponent	0-1
Hitting more 3-point field goals than opponents	14-0
Hitting less 3-point field goals than opponents	4-1
Hitting same 3-point goals as opponents	2-1
Shooting more 3-point attempts than opponents	16-1
Shooting less 3-point attempts than opponents	4-1
Same 3-point attempts as opponents	0-0
Shooting 50 percent or better	4-0
Shooting less than 50 percent	16-2
Opponent shoots 50 percent or better	0-0
Opponent shoots less than 50 percent	20-2
Shooting better than opponent	18-1
Shooting worse than opponent	2-1
Shooting same as opponent	0-0
Scoring 50 or less	0-1
Scoring between 51-60	0-0
Scoring between 61-70	5-1
Scoring between 71-80	4-0
Scoring between 81-90	10-0
Scoring between 91-100	1-0
Scoring more than 100	0-0
Opponent scores 50 or less	8-1
Opponent scores between 51-60	8-0
Opponent scores between 61-70	4-0
Opponent scores between 71-80	0-1
Opponent scores between 81-90	0-0
Opponent scores between 91-100	0-0
Opponent scores more than 100	0-0
In November	4-0
In December	6-1
In January	7-1
In February	3-0
In March	0-0
On Monday	1-0
On Tuesday	3-0
On Wednesday	5-0
On Thursday	1-0
On Friday	2-0
On Saturday	8-2
On Sunday	0-0

Double Figure Scoring

Brooke Ubelaker	20
Amanda Holmes	15
Corkey Stiger	14
Cindy Keeley	6
Jessica Aebi	5
Megan Sullivan	4
Renata Germano	3
Nikki Holmes	1

Double Figure Rebounding

Amanda Holmes	7
Cindy Keeley	1
Brooke Ubelaker	1

Double Figure Assists

none	
Double Doubles Season	
Amanda Holmes	7
Cindy Keeley	1
Brooke Ubelaker	1

Double Doubles Career

Amanda Holmes	8
Brooke Ubelaker	7
Megan Sullivan	2
Cindy Keeley	1

20-Point Games Season

Corkey Stiger	4
Brooke Ubelaker	3

20-Point Games Career

Brooke Ubelaker	13
Corkey Stiger	4
Megan Sullivan	1

30-Point Games Season

none

30-Point Games Career

Brooke Ubelaker	2
-----------------	---

Starting lineups used during 2006-07 season

(W-L)	F	F	F	G	G
(20-2)	Sullivan	Ubelaker	Homes	Aebi	Keeley

Win/Loss Margin

	1	2	3	4	5	6	7	8	9	10	11-15	16-29	30+
Wins	-	-	-	-	-	-	1	-	-	-	2	10	7
Losses	-	1	-	-	-	-	-	1	-	-	-	-	-

Free throws last 5:00 of game

3	Cindy Keeley	1-2 (.500)
4	Amanda Holmes	8-11 (.727)
5	K.G. Hellen	1-2 (.500)
10	Jessica Aebi	1-2 (.500)
11	Renata Germano	12-17 (.706)
13	Jessica Mainz	6-9 (.667)
15	Nikki Holmes	3-5 (.600)
20	Holly Henrichs	4-4 (1.000)
21	Corkey Stiger	6-8 (.750)
23	Stephanie Wittman	4-6 (.667)
24	Karla Tailele	1-1 (1.000)
25	Megan Sullivan	3-6 (.500)
32	Brooke Ubelaker	5-5 (1.000)
33	Hope Gregory	0-0 (.000)

Lady Blues**55-78 (.705)****Opponents****53-73 (.726)****Point Figures**

Biggest halftime lead	32 vs Northwood, 12/19/06
Biggest halftime deficit	1, vs MWSU, 12/9/06
Biggest lead	54 vs Lynn, 11/25/06
Biggest deficit	14, vs TSU, 1/13/07

Streaking Lady Blues 2006-07

2005-06 winning	3- current (12 longest)
2005-06 losing	1 - (longest)

Washburn Lady Blues ...

Consecutive games with a 3-pointer	97
last game without, 2/25/04 vs Emporia State	
100-point games	8
Consecutive games with opponents under 100	240
Season openers	29-9
Season openers under Ron McHenry	7-0
Home openers in Lee Arena	20-3
Last overtime game 3/13/06 vs Emporia State, L 61-59 in South Central Regional Final	
In games decided by 1 point	20-12 (.625)
In games decided by 2 points	28-18 (.622)
In games decided by 3 points	18-17 (.514)
In overtime games	20-12 (.625)
Overall	660-318 (.675)
In the MIAA	219-79 (.731)
In the MIAA Tournament	22-11 (.667)
In the NCAA Tournament	18-9 (.667)
In Lee Arena	286-55 (.836)

Individual Highs

Points

- 25 Stiger, Corkey at Pittsburg State (02/03/07)
- 24 Stiger, Corkey at Southwest Baptist (02/06/07)
- 23 Ubelaker, Brooke vs Northwood Univ. (12/19/06)
- 21 Ubelaker, Brooke at Southwest Baptist (02/06/07)
- 21 Ubelaker, Brooke vs Pittsburg State (01/20/07)
- 21 Stiger, Corkey vs Northwood Univ. (12/19/06)

Field goals made

- 11 Stiger, Corkey at Pittsburg State (02/03/07)
- 10 Stiger, Corkey at Southwest Baptist (02/06/07)

Field goals attempts

- 16 Stiger, Corkey at Southwest Baptist (02/06/07)
- 16 Stiger, Corkey at Pittsburg State (02/03/07)
- 16 Stiger, Corkey vs Missouri Western (12/09/06)

Field goal percentage (min. 5 made)

- 1.000 (5-5) Ubelaker, Brooke vs Lynn (11/25/06)
- .875 (7-8) Ubelaker, Brooke at Central Missouri (12/30/06)

3 Pt Field goals made

- 5 Keeley, Cindy vs Missouri Southern (02/01/07)
- 5 Ubelaker, Brooke at Truman (01/13/07)

3 Pt Field goals attempts

- 11 Ubelaker, Brooke at Missouri Southern (01/24/07)
- 11 Ubelaker, Brooke vs Southwest Baptist (01/17/07)

3 Pt Field goal percentage (min. 2 made)

- 1.000 (3-3) Holmes, Amanda vs Lincoln (12/16/06)
- 1.000 (3-3) Ubelaker, Brooke vs Lynn (11/25/06)
- 1.000 (2-2) Aebi, Jessica at Missouri Southern (01/24/07)
- 1.000 (2-2) Holmes, Amanda vs Southwestern (Kan.) (12/04/06)
- 1.000 (2-2) Ubelaker, Brooke vs Cameron (11/18/06)

Free throws made

- 9 Holmes, Amanda at Truman (01/13/07)
- 8 Holmes, Amanda vs Southwest Baptist (01/17/07)
- 8 Holmes, Amanda vs Emporia State (01/03/07)

Free throws attempts

- 12 Holmes, Amanda vs Southwest Baptist (01/17/07)
- 12 Holmes, Amanda at Truman (01/13/07)

Free throws percentage (min. 7 made)

- 1.000 (7-7) Ubelaker, Brooke vs Missouri Western (12/09/06)
- 1.000 (7-7) Stiger, Corkey vs Cameron (11/18/06)

Rebounds

- 13 Holmes, Amanda vs Northwest Missouri (01/06/07)
- 13 Keeley, Cindy vs Cameron (11/24/06)

Assists

- 8 Stiger, Corkey vs Missouri Western (12/09/06)
- 7 Aebi, Jessica at Pittsburg State (02/03/07)
- 7 Mainz, Jessica vs Missouri Southern (02/01/07)
- 7 Mainz, Jessica vs Pittsburg State (01/20/07)
- 7 Stiger, Corkey vs Glenville State College (12/20/06)

Steals

- 8 Stiger, Corkey at Truman (01/13/07)
- 6 Mainz, Jessica vs Benedictine (12/12/06)

Blocked shots

- 6 Holmes, Amanda vs Fort Hays State (01/10/07)
- 4 Holmes, Amanda vs Southwestern (Kan.) (12/04/06)

Team Highs

POINTS	93	vs Cameron (11/18/06)
FIELD GOALS MADE	35	vs Southwest Baptist (01/17/07)
FIELD GOAL ATTEMPTS	69	vs Southwest Baptist (01/17/07)
FIELD GOAL PERCENTAGE	.548 (34-62)	vs Northwood Univ. (12/19/06)
3 PT FIELD GOALS MADE	15	vs Lincoln (12/16/06)
3 PT FG ATTEMPTS	30	vs Lincoln (12/16/06)
3 PT FG PERCENTAGE	.571 (8-14)	at Southwest Baptist (02/06/07)
FREE THROWS MADE	23	two times
FREE THROW ATTEMPTS	28	two times
FREE THROW PERCENTAGE	.900 (18-20)	vs Missouri Southern (02/01/07)
REBOUNDS	50	vs Fort Hays State (01/10/07)
ASSISTS	25	vs Lincoln (12/16/06)
STEALS	19	vs Southwest Baptist (01/17/07)
BLOCKED SHOTS	12	vs Fort Hays State (01/10/07)
TURNOVERS	21	vs Northwood Univ. (12/19/06)
FOULS	25	vs Northwood Univ. (12/19/06)

Team Lows

POINTS	47	at Missouri Western (01/27/07)
FIELD GOALS MADE	20	two times
FIELD GOAL ATTEMPTS	54	three times
FIELD GOAL PERCENTAGE	.339 (20-59)	vs Emporia State (01/03/07)
3 PT FIELD GOALS MADE	3	three times
3 PT FG ATTEMPTS	12	vs Missouri Western (12/09/06)
3 PT FG PERCENTAGE	.125 (3-24)	at Missouri Western (01/27/07)
FREE THROWS MADE	4	at Missouri Western (01/27/07)
FREE THROW ATTEMPTS	10	two times
FREE THROW PERCENTAGE	.308 (4-13)	at Missouri Western (01/27/07)
REBOUNDS	28	at Missouri Southern (01/24/07)
ASSISTS	11	vs Missouri Western (12/09/06)
STEALS	2	vs Northwest Missouri (01/06/07)
BLOCKED SHOTS	1	four times
TURNOVERS	7	vs Emporia State (01/03/07)
FOULS	8	vs Lincoln (12/16/06)

LADY BLUES VS OPPONENTS

Below is a game-by-game breakdown of how Washburn has fared against opponents in the following categories: points off turnovers, points in the paint, second chance points, fast break points and bench points. (Shown as WU stats first, followed by Opponents).

	Pts off turnovers	Paint	2nd Chance	Fast Break	Bench
vs Southwestern Oklahoma	32-4	26-26	14-6	12-0	33-5
vs Cameron	32-13	40-26	18-8	6-4	43-21
Cameron	23-13	36-16	11-12	10-2	43-16
Lynn	22-12	39-20	12-10	11-0	32-11
Southwestern College	27-7	30-8	17-5	4-0	21-17
Missouri Western*	11-16	34-32	10-12	4-2	22-6
Benedictine	26-11	42-28	11-5	6-0	49-18
Lincoln	34-8	28-14	16-10	13-2	34-15
vs Northwood (Mich.)	18-17	42-18	8-8	10-2	40-20
vs Glenville State	23-20	38-22	7-9	2-4	11-5
at Central Missouri*	20-14	32-16	14-5	4-2	25-7
Emporia State*	18-10	29-24	6-11	7-2	20-12
Northwest Missouri*	11-12	28-14	19-10	2-0	29-26
Fort Hays State*	22-6	36-8	14-4	10-0	23-5
at Truman*	22-20	38-22	10-3	18-0	29-6
Southwest Baptist*	36-6	50-22	19-10	8-2	25-26
Pittsburg State*	19-10	40-18	15-3	16-4	29-11
at Missouri Southern*	26-8	28-26	12-11	12-2	18-19
at Missouri Western*	15-15	26-24	4-8	2-4	10-12
Missouri Southern*	32-7	24-20	9-7	13-0	26-17
at Pittsburg State*	17-8	34-10	15-8	12-4	27-21
at Southwest Baptist*	9-16	34-10	10-5	6-2	33-20
Truman*					
at Northwest Missouri*					
at Emporia State*					
at Fort Hays State*					
Central Missouri*					
at Fort Hays State*					
Central Missouri*					
TOTALS	495-253	755-424	270-170	188-38	622-316

Individual Double-Doubles in 2006-07

Amanda Holmes (7)

14 points, 10 rebounds vs Cameron (11/18/06)

15 points, 11 rebounds vs Lynn (11/25/06)

13 points, 12 rebounds vs Southwestern (12/4/06)

16 points, 10 rebounds vs Missouri Western (12/9/06)

16 points, 12 rebounds vs Emporia State (1/3/07)

10 points, 13 rebounds vs Northwest Mo. (1/6/07)

19 points, 12 rebounds, vs Truman (1/13/07)

Cindy Keeley (1)

11 points, 13 rebounds vs Cameron (11/24/06)

Brooke Ubelaker (1)

18 points, 11 rebounds vs Lincoln (12/16/06)

WU Team Stats

Team Statistics	WU	OPP
SCORING	1692	1149
Points per game	76.9	52.2
Scoring margin	+24.7	-
FIELD GOALS-ATT	622-1357	411-1171
Field goal pct	.458	.351
3 POINT FG-ATT	163-446	90-323
3-point FG pct	.365	.279
3-pt FG made per game	7.4	4.1
FREE THROWS-ATT	285-399	237-338
Free throw pct	.714	.701
REBOUNDS	867	703
Rebounds per game	39.4	32.0
Rebounding margin	+7.5	-
ASSISTS	403	222
Assists per game	18.3	10.1
TURNOVERS	302	441
Turnovers per game	13.7	20.0
Turnover margin	+6.3	-
Assist/turnover ratio	1.3	0.5
STEALS	240	143
Steals per game	10.9	6.5
BLOCKS	83	45
Blocks per game	3.8	2.0
WINNING STREAK	3	-
Home win streak	8	-
ATTENDANCE	29460	9577
Home games-Avg/Game	12-2455	6-1302
Neutral site-Avg/Game	-	4-441

SCORE BY PERIODS:	1st	2nd	Total
Washburn	820	872	1692
Opponents	548	601	1149

Updated Career Records

Points	3-point FG percentage (minimum 70 made)	Blocked shots
1. 2613 Brenda Shaffer-Dahl (126 games) - 1986-90	1. .414 Alison Garrett (120-290) 2001-05	1. 160 Brenda Shaffer-Dahl - 1986-90
2. 2144 Shelley Foster (125 games) - 1991-95	2. .411 Stacy Neal (92-224) 1994-96	2. 116 Jannica Beam - 1989-93
3. 1811 Nikki Olberding (112 games) - 1994-98	3. .407 Brooke Ubelaker (205-504) 2003-07	3. 101 Laura Mueller - 1988-92
4. 1761 Laura Mueller (123 games) - 1988-92	4. .406 Brenda Shaffer-Dahl (110-271) 1986-90	4. 91 Nikki Olberding - 1994-98
5. 1674 Brooke Ubelaker (123 games) - 2003-07	5. .392 Lisa Hoelting (78-199) 1997-00	5. 80 Carla Sintra - 2003-05
6. 1558 Latisha Yarnell (121 games) - 1984-88	6. .376 Erin Menard (83-221) 2003-05	6. 72 Jodi Rausch - 1997-01
7. 1356 Joy Benton (115 games) - 1981-85	7. .372 Rhonda Matzke (81-218) 1992-94	7. 71 Kelly Jennings - 1986-88
8. 1344 Crystal Walker (103 games) - 1999-03	8. .371 Rina Hembrough (79-213) 1988-91	8. 66 Shelley Foster - 1991-95
9. 1314 Jennifer Harris (69 games) - 2004-06	9. .367 Kristy Chapman (122-332) 1999-03	9. 63 Crystal Walker - 1999-03
10. 1310 Amy Renyer (124 games) - 1989-93	10. .363 Lora Westling (144-397) 2001-05	10. 59 Emily Shopper - 1995-97
11. 1135 Pam Watkins (92 games) - 1977-81	11. .277 Jennifer Harris (108-390) 2004-06	11. 55 Amanda Holmes - 2005-07
12. 1111 Chauna Agosto (118 games) - 1991-95		12. 54 April Roadhouse - 2002-06
13. 1098 Jennifer Butcher (84 games) - 1998-01	Free throws made	13. 46 Bojana Samardziska - 2005-06
14. 1090 Kelly Jennings (53 games) - 1986-88	1. 485 Shelley Foster (125 games) - 1991-95	14. 43 Brooke Ubelaker - 2003-07
15. 1067 Lori Roenbaugh (80 games) - 1980-83	2. 384 Nikki Olberding (112 games) - 1994-98	15. 43 Lora Westling - 2001-05
	3. 381 Brenda Shaffer-Dahl (126 games) - 1986-90	16. 42 Beth Fisher - 1990-94
	4. 340 Latisha Yarnell (121 games) - 1984-88	17. 41 Jennifer Harris - 2004-06
	5. 299 Laura Mueller (123 games) - 1988-92	18. 41 Megan Sullivan - 2003-07
	6. 292 Crystal Walker (103 games) - 1999-03	19. 37 Cindy Keeley - 2003-07
	7. 271 Jennifer Butcher (84 games) - 1998-01	20. 37 Montoya Whitfield - 2003-04
	8. 267 Chauna Agosto (118 games) - 1991-95	
	9. 245 Pam Watkins (92 games) - 1977-81	Steals
	10. 242 Amy Renyer (124 games) - 1989-93	1. 275 Brenda Shaffer-Dahl - 1986-90
	11. 238 Jennifer Harris (69 games) - 2004-06	2. 258 Chauna Agosto - 1991-95
	12. 233 Brooke Ubelaker (123 games) - 2003-07	3. 212 Latisha Yarnell - 1984-88
	13. 220 Joy Benton (115 games) - 1981-85	4. 192 April Roadhouse - 2002-06
	14. 205 Carla Sintra (68 games) - 2003-05	5. 182 Amy Renyer - 1989-93
	15. 202 Rhonda Lee (95 games) - 1987-90	6. 175 Tiffany Lohse - 1995-99
		7. 165 Jennifer Harris - 2004-06
	Free throws attempted	8. 162 Shelley Foster - 1991-95
	1. 598 Shelley Foster (125 games) - 1991-95	9. 155 Nikki Olberding - 1994-98
	2. 472 Brenda Shaffer-Dahl (126 games) - 1986-90	10. 153 Lisa Hoelting - 1997-00
	3. 464 Laura Mueller (123 games) - 1988-92	11. 141 Carolyn Wempe - 1985-89
	4. 462 Nikki Olberding (112 games) - 1994-98	12. 138 Laura Mueller - 1988-92
	5. 436 Latisha Yarnell (121 games) - 1984-88	13. 135 Brooke Ubelaker - 2003-07
	6. 412 Jennifer Butcher (84 games) - 1998-01	14. 135 Crystal Walker - 1999-03
	7. 397 Pam Watkins (92 games) - 1977-81	15. 132 Cindy Keeley - 2003-07
	8. 391 Chauna Agosto (118 games) - 1991-95	16. 130 Jodi Rausch - 1997-01
	9. 381 Crystal Walker (103 games) - 1999-03	17. 128 Jennifer Butcher - 1998-01
	10. 356 Joy Benton (115 games) - 1981-85	18. 122 Kristy Chapman - 1999-03
	11. 320 Jennifer Harris (69 games) - 2004-06	19. 116 Lora Westling - 2001-05
	12. 319 Amy Renyer (124 games) - 1989-93	20. 109 Bethany McGraw - 1999-03
	13. 306 Rhonda Lee (95 games) - 1987-90	
	14. 291 Brooke Ubelaker (123 games) - 2003-07	Games played
	15. 281 Kristy Chapman (121 games) - 1999-03	1. 135 April Roadhouse - 2002-06
		2. 133 Dani McHenry - 2002-06
	Rebounds	3. 132 Lora Westling - 2001-05
	1. 1106 Brenda Shaffer-Dahl (1106o-0d) - 1986-90	4. 126 Brenda Shaffer-Dahl - 1986-90
	2. 923 Amy Renyer (923o-0d) - 1989-93	5. 125 Shelley Foster - 1991-95
	3. 812 Pam Watkins (812o-0d) - 1977-81	6. 124 Amy Renyer - 1989-93
	4. 806 Joy Benton (806o-0d) - 1981-85	7. 124 Carolyn Wempe - 1985-89
	5. 736 Shelley Foster (736o-0d) - 1991-95	8. 123 Cindy Keeley - 2003-07
	6. 715 Latisha Yarnell (715o-0d) - 1984-88	9. 123 Laura Mueller - 1988-92
	7. 690 Nikki Olberding (325o-365d) - 1994-98	10. 123 Brooke Ubelaker - 2003-07
	8. 678 Brooke Ubelaker (212o-466d) - 2003-07	11. 121 Kristy Chapman - 1999-03
	9. 650 Crystal Walker (255o-395d) - 1999-03	12. 121 Latisha Yarnell - 1984-88
	10. 637 Brenda Soldani (637o-0d) - 1980-84	13. 120 Bethany McGraw - 1999-03
	11. 584 Jennifer Butcher (222o-362d) - 1998-01	14. 119 Jannica Beam - 1989-93
	12. 554 Laura Mueller (554o-0d) - 1988-92	15. 118 Chauna Agosto - 1991-95
	13. 507 Kelly Jennings (507o-0d) - 1986-88	16. 115 Joy Benton - 1981-85
	14. 506 Jannica Beam (506o-0d) - 1989-93	17. 113 Beth Fisher - 1990-94
	15. 491 Susie Wickham (491o-0d) - 1982-84	18. 112 Nikki Olberding - 1994-98
		19. 112 Elena Rettiger - 1992-96
	Assists	20. 110 Brenda Soldani - 1980-84
	1. 527 Latisha Yarnell - 1984-88	
	2. 488 Chauna Agosto - 1991-95	Games started
	3. 423 April Roadhouse - 2002-06	1. 125 Brenda Shaffer-Dahl - 1986-90
	4. 416 Brenda Shaffer-Dahl - 1986-90	2. 123 Brooke Ubelaker - 2003-07
	5. 308 Jennifer Harris - 2004-06	3. 119 Laura Mueller - 1988-92
	6. 299 Carolyn Wempe - 1985-89	4. 117 Shelley Foster - 1991-95
	7. 299 Lora Westling - 2001-05	5. 107 Nikki Olberding - 1994-98
	8. 294 Tiffany Lohse - 1995-99	6. 101 Amy Renyer - 1989-93
	9. 293 Lisa Hoelting - 1997-00	7. 98 Bethany McGraw - 1999-03
	10. 289 Misty Caryl - 1994-98	8. 97 Chauna Agosto - 1991-95
	11. 283 Shelley Foster - 1991-95	9. 96 Carolyn Wempe - 1985-89
	12. 280 Amy Renyer - 1989-93	10. 92 Tiffany Lohse - 1995-99
	13. 273 Nikki Olberding - 1994-98	11. 88 April Roadhouse - 2002-06
	14. 270 Brenda Soldani - 1980-84	12. 85 Lora Westling - 2001-05
	15. 261 Kristy Chapman - 1999-03	13. 83 Amy Bybee - 1987-90
	16. 254 Bethany McGraw - 1999-03	14. 80 Crystal Walker - 1999-03
	17. 242 Amy Bybee - 1987-90	15. 77 Jennifer Butcher - 1998-01
	18. 227 Rina Hembrough - 1988-91	16. 68 Lisa Hoelting - 1997-00
	19. 217 Cindy Keeley - 2003-07	17. 68 Carla Sintra - 2003-05
	20. 216 Lori Roenbaugh - 1980-83	18. 67 Beth Fisher - 1990-94
	3-point field goals attempted	
	1. 504 Brooke Ubelaker (123 games) - 2003-07	
	2. 397 Lora Westling (132 games) - 2001-05	
	3. 390 Jennifer Harris (69 games) - 2004-06	
	4. 332 Kristy Chapman (121 games) - 1999-03	
	5. 290 Alison Garrett (106 games) - 2001-05	
	6. 271 Brenda Shaffer-Dahl (126 games) - 1986-90	
	7. 224 Stacy Neal (58 games) - 1994-96	
	8. 221 Erin Menard (63 games) - 2003-05	
	9. 218 Rhonda Matzke (59 games) - 1992-94	
	10. 213 Rina Hembrough (93 games) - 1988-91	
	11. 199 Lisa Hoelting (70 games) - 1997-00	
	12. 186 Cindy Keeley (123 games) - 2003-07	
	--	
	20. 107 Jessica Aebi (55 games) - 2005-07	



#3 Cindy Keeley

5-9 | Senior | Guard | Great Bend, Kan. | Great Bend HS



Opponent	Date	GS	Min	TOTAL		3-PTS		FT	FTA	Pct	REBOUNDS				PF	FO	A	TO	Blk	Stl	Pts	Avg		
				FG	FGA	Pct	3FG				FGA	Pct	Off	Def									Tot	Avg
vs Southwestern Oklahoma	11/17/06 *	20	5	8	.625	2	3	.667	3	3	1.000	4	0	4	4.0	1	0	2	0	0	0	15	15.0	
vs Cameron	11/18/06 *	29	1	5	.200	1	4	.250	0	0	.000	0	3	3	3.5	1	0	5	0	0	2	3	9.0	
CAMERON	11/24/06 *	28	5	11	.455	1	6	.167	0	0	.000	5	8	13	6.7	3	0	2	1	1	2	11	9.7	
LYNN	11/25/06 *	23	2	3	.667	2	3	.667	2	2	1.000	0	5	5	6.3	2	0	3	0	0	0	8	9.3	
SOUTHWESTERN (KAN.)	12/04/06 *	25	1	6	.167	1	4	.250	2	2	1.000	4	1	5	6.0	0	0	0	1	0	1	5	8.4	
MISSOURI WESTERN	12/09/06 *	34	4	6	.667	1	2	.500	0	0	.000	2	5	7	6.2	3	0	0	3	0	0	9	8.5	
BENEDICTINE	12/12/06 *	22	3	9	.333	1	4	.250	0	0	.000	0	1	1	5.4	2	0	1	0	0	1	7	8.3	
LINCOLN	12/16/06 *	22	4	11	.364	4	7	.571	0	0	.000	2	4	6	5.5	0	0	5	1	0	2	12	8.8	
vs Northwood Univ.	12/19/06 *	21	3	6	.500	2	3	.667	0	0	.000	1	2	3	5.2	3	0	4	2	0	2	8	8.7	
vs Glenville State College	12/20/06 *	29	2	5	.400	0	2	.000	4	6	.667	2	2	4	5.1	2	0	4	2	0	2	8	8.6	
at Central Missouri	12/30/06 *	36	4	8	.500	1	4	.250	0	0	.000	3	5	8	5.4	0	0	3	1	2	1	9	8.6	
EMPORIA STATE	01/03/07 *	31	1	2	.500	1	2	.500	4	6	.667	0	0	0	4.9	3	0	1	0	1	3	7	8.3	
NORTHWEST MISSOURI	01/06/07 *	26	3	7	.429	1	4	.250	0	0	.000	2	1	3	4.8	2	0	4	1	0	1	7	8.4	
FORT HAYS STATE	01/10/07 *	23	5	7	.714	2	4	.500	3	4	.750	0	8	8	5.0	0	0	2	3	2	4	15	8.9	
at Truman	01/13/07 *	31	2	2	1.000	0	0	.000	3	3	1.000	0	0	0	4.7	1	0	2	2	0	0	7	8.7	
SOUTHWEST BAPTIST	01/17/07 *	30	5	6	.833	1	2	.500	0	0	.000	2	3	5	4.7	2	0	1	3	0	4	11	8.9	
PITTSBURG STATE	01/20/07 *	24	5	8	.625	1	4	.250	0	0	.000	2	0	2	4.5	5	1	2	0	0	2	11	9.0	
at Missouri Southern	01/24/07 *	35	3	5	.600	1	1	1.000	2	2	1.000	1	2	3	4.4	2	0	4	1	3	1	9	9.0	
at Missouri Western	01/27/07 *	35	1	7	.143	1	4	.250	0	2	.000	2	7	9	4.7	1	0	3	1	0	0	3	8.7	
MISSOURI SOUTHERN	02/01/07 *	29	7	11	.636	5	7	.714	0	0	.000	2	4	6	4.8	1	0	0	1	0	1	19	9.2	
at Pittsburg State	02/03/07 *	34	3	10	.300	1	3	.333	1	1	1.000	2	5	7	4.9	0	0	4	1	0	3	8	9.1	
at Southwest Baptist	02/06/07 *	31	2	5	.400	1	2	.500	2	2	1.000	2	6	8	5.0	1	0	3	2	0	0	7	9.0	
Totals		22	618	71	148	.480	31	75	.413	26	33	.788	38	72	110	5.0	35	1	55	26	9	32	199	9.0

Career Highs

Points	19, two times
Field Goals	7, two times
Field Goal Attempts	11, three times
3-Point Field Goals	5, vs Missouri Southern 2/1/07
3-Point Attempts	7, vs Missouri Southern 2/1/07
Free Throws	5, two times
Free Throw Attempts	6, two times
Rebounds	13, vs Cameron 11/24/06
Assists	5, four times
Steals	5, vs Emporia State 2/15/06
Blocked Shots	3, two times
Minutes Played	41, vs Emporia State

Season Highs

Points	19, vs Missouri Southern 2/1/07
Field Goals	7, vs Missouri Southern 2/1/07
Field Goal Attempts	11, two times
3-Point Field Goals	5, vs Missouri Southern 2/1/07
3-Point Attempts	7, two tiems
Free Throws	4, vs Emporia State 1/3/07
Free Throw Attempts	6, vs Emporia State 1/3/07
Rebounds	13, vs Cameron 11/24/06
Assists	5, vs Cameron 11/18/06
Steals	4, two times
Blocked Shots	3, at Missouri Southern 1/24/07
Minutes Played	36, at Central Missouri 12/30/06

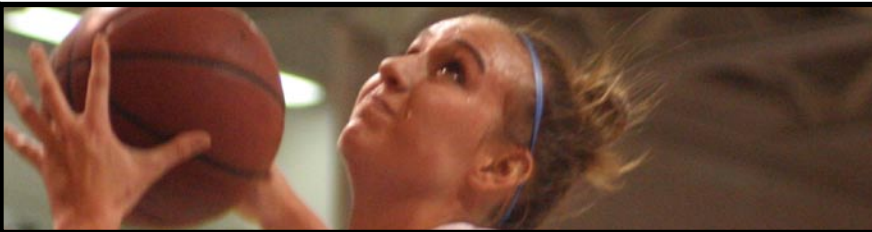
Career Miscellaneous

Double Figure Scoring	15
Fr.-2 So.-0	Jr.-6 Sr.-7
Double Figure Rebounding	2
Fr.-0 So.-0	Jr.-0 Sr.-2
Games with 5+ Rebounds	29
Fr.-3 So.-6	Jr.-10 Sr.-10
Games with 5+ Assists	4
Fr.-1 So.-0	Jr.-1 Sr.-2
Double-Double Games	1
Fr.-0 So.-0	Jr.-0 Sr.-1

Keeley's Career Stats																										
YEAR	GP	GS	MIN	AVG	FG	FGA	PCT	3FG	3FGA	PCT	FT	FTA	PCT	OFF	DEF	TOT	AVG	PF	FO	A	TO	BLK	ST	PTS	AVG	
2003-04	31	0	453	14.6	41	93	.441	7	31	.226	25	36	.694	27	52	79	2.5	31	0	49	26	6	25	114	3.7	
2004-05	37	1	466	12.6	35	85	.412	7	31	.226	16	25	.640	49	46	95	2.6	41	0	37	13	10	25	93	2.5	
2005-06	33	33	871	26.4	71	134	.530	17	49	.347	37	49	.755	56	72	128	3.9	72	1	76	26	12	50	196	5.9	
2006-07	22	22	618	28.1	71	148	.480	31	75	.413	26	33	.788	38	72	110	5.0	35	1	55	26	9	32	199	9.0	
TOTAL	123	56	2408	19.6	218	460	.474	62	186	.333	104	143	.727	170	242	412	3.3	179	2	217	91	37	132	602	4.9	

#4 Amanda Holmes

6-2 | Junior | Forward | Topeka, Kan. | Texas Christian | Hayden HS



Opponent	Date	GS	Min	TOTAL		3-PTS		Pct	FT	FTA	Pct	REBOUNDS				PF	FO	A	TO	Blk	Stl	Pts	Avg	
				FG	FGA	3FG	FGA					Off	Def	Tot	Avg									
vs Southwestern Oklahoma	11/17/06 *	22	4	10	.400	1	3	.333	0	0	.000	2	4	6	6.0	2	0	1	2	0	2	9	9.0	
vs Cameron	11/18/06 *	23	6	12	.500	1	1	1.000	1	2	.500	3	7	10	8.0	2	0	2	4	0	0	14	11.5	
CAMERON	11/24/06 *	15	0	2	.000	0	0	.000	0	0	.000	2	3	5	7.0	3	0	0	2	0	1	0	7.7	
LYNN	11/25/06 *	20	6	9	.667	0	0	.000	3	3	1.000	2	9	11	8.0	3	0	1	4	1	1	15	9.5	
SOUTHWESTERN (KAN.)	12/04/06 *	23	4	6	.667	2	2	1.000	3	6	.500	3	9	12	8.8	3	0	2	1	4	4	13	10.2	
MISSOURI WESTERN	12/09/06 *	31	6	13	.462	0	0	.000	4	5	.800	4	6	10	8.0	3	0	0	6	2	1	16	11.2	
BENEDICTINE	12/12/06 *	19	0	4	.000	0	1	.000	3	4	.750	1	4	5	8.4	2	0	1	7	0	3	3	10.0	
LINCOLN	12/16/06 *	25	4	6	.667	3	3	1.000	0	0	.000	2	2	4	7.9	2	0	5	3	2	4	11	10.1	
vs Northwood Univ.	12/19/06 *	27	4	6	.667	0	1	.000	2	2	1.000	3	4	7	7.8	4	0	1	4	2	3	10	10.1	
vs Glenville State College	12/20/06 *	27	6	11	.545	0	0	.000	1	2	.500	1	0	1	7.1	3	0	0	2	2	1	13	10.4	
at Central Missouri	12/30/06 *	30	2	7	.286	0	2	.000	2	6	.333	1	3	4	6.8	3	0	4	1	0	1	6	10.0	
EMPORIA STATE	01/03/07 *	27	4	12	.333	0	1	.000	8	9	.889	3	9	12	7.3	3	0	1	3	1	2	16	10.5	
NORTHWEST MISSOURI	01/06/07 *	17	4	12	.333	0	3	.000	2	3	.667	5	8	13	7.7	3	0	0	2	1	0	10	10.5	
FORT HAYS STATE	01/10/07 *	22	6	8	.750	0	1	.000	4	4	1.000	2	3	5	7.5	3	0	1	2	6	0	16	10.9	
at Truman	01/13/07 *	23	5	10	.500	0	1	.000	9	12	.750	4	8	12	7.8	3	0	0	4	0	1	19	11.4	
SOUTHWEST BAPTIST	01/17/07 *	24	4	8	.500	0	1	.000	8	12	.667	2	5	7	7.8	2	0	1	1	3	1	16	11.7	
PITTSBURG STATE	01/20/07 *	15	2	3	.667	0	0	.000	1	4	.250	1	5	6	7.6	4	0	0	1	0	0	5	11.3	
at Missouri Southern	01/24/07 *	28	4	8	.500	0	0	.000	5	7	.714	5	4	9	7.7	3	0	3	2	0	2	13	11.4	
at Missouri Western	01/27/07 *	30	7	12	.583	1	4	.250	2	6	.333	2	1	3	7.5	5	1	1	2	2	2	17	11.7	
MISSOURI SOUTHERN	02/01/07 *	16	1	4	.250	0	0	.000	7	8	.875	2	5	7	7.5	4	0	1	0	1	1	9	11.6	
at Pittsburg State	02/03/07 *	26	6	12	.500	0	0	.000	7	11	.636	3	6	9	7.5	3	0	2	1	2	0	19	11.9	
at Southwest Baptist	02/06/07 *	19	4	9	.444	0	0	.000	0	0	.000	0	4	4	7.4	2	0	1	0	0	0	8	11.7	
Totals		22	509	89	184	.484	8	24	.333	72	106	.679	53	109	162	7.4	65	1	28	54	29	30	258	11.7

Season Highs

Points	19, two times	
Field Goals	7, at Missouri Western	1/27/07
Field Goal Attempts	13, Missouri Western	12/9/06
3-Point Field Goals	2, vs Southwestern	12/4/06
3-Point Attempts	4, at Missouri Western	1/27/07
Free Throws	9, vs Truman	1/13/07
Free Throw Attempts	12, two times	
Rebounds	13, vs Northwest Missouri	1/6/07
Assists	5, vs Lincoln	12/16/06
Steals	4, two times	
Blocked Shots	6, vs Fort Hays State	1/10/07
Minutes Played	31, vs Missouri Western	12/9/06



#10 Jessica Aebi

5-7 | Senior | Guard | Enid, Okla. | Northeastern Okla. A&M | Enid HS



Opponent	Date	GS	Min	TOTAL			3-PTS			FT	FTA	Pct	REBOUNDS			PF	FO	A	TO	Blk	Stl	Pts	Avg
				FG	FGA	Pct	3FG	FGA	Pct				Off	Def	Tot								
vs Southwestern Oklahoma	11/17/06	*	22	3	5	.600	2	3	.667	0	0	.000	0	2	2	2.0	1	0	6	0	0	4	8.0
vs Cameron	11/18/06	*	27	5	9	.556	3	5	.600	1	2	.500	0	1	1	1.5	2	0	4	2	1	3	14.0
CAMERON	11/24/06	*	31	6	9	.667	1	3	.333	2	3	.667	0	2	2	1.7	1	0	6	5	0	1	15
LYNN	11/25/06	*	22	2	5	.400	1	1	1.000	3	4	.750	0	0	0	1.3	2	0	5	2	0	1	8
SOUTHWESTERN (KAN.)	12/04/06	*	27	3	5	.600	0	0	.000	0	0	.000	0	2	2	1.4	1	0	4	0	2	0	6
MISSOURI WESTERN	12/09/06	*	38	2	5	.400	0	1	.000	2	2	1.000	0	3	3	1.7	3	0	1	3	0	1	6
BENEDICTINE	12/12/06	*	23	1	3	.333	0	0	.000	2	2	1.000	0	2	2	1.7	1	0	2	0	0	2	4
LINCOLN	12/16/06	*	20	0	3	.000	0	3	.000	0	0	.000	0	2	2	1.8	2	0	6	1	1	2	0
vs Northwood Univ.	12/19/06	*	22	2	5	.400	1	2	.500	0	0	.000	0	1	1	1.7	2	0	2	0	0	0	5
vs Glenville State College	12/20/06	*	31	4	10	.400	0	2	.000	3	4	.750	0	4	4	1.9	2	0	3	3	0	0	11
at Central Missouri	12/30/06	*	29	3	5	.600	0	1	.000	0	0	.000	0	3	3	2.0	2	0	2	1	0	1	6
EMPORIA STATE	01/03/07	*	36	3	11	.273	2	3	.667	2	2	1.000	0	3	3	2.1	2	0	3	2	0	1	10
NORTHWEST MISSOURI	01/06/07	*	24	3	10	.300	1	7	.143	0	0	.000	0	1	1	2.0	3	0	2	2	0	0	7
FORT HAYS STATE	01/10/07	*	26	1	6	.167	0	2	.000	2	2	1.000	0	1	1	1.9	0	0	6	1	1	3	4
at Truman	01/13/07	*	32	3	7	.429	2	4	.500	1	2	.500	0	3	3	2.0	2	0	3	2	0	0	9
SOUTHWEST BAPTIST	01/17/07	*	28	4	8	.500	0	0	.000	0	0	.000	0	2	2	2.0	1	0	5	3	0	4	8
PITTSBURG STATE	01/20/07	*	32	4	10	.400	2	7	.286	0	0	.000	0	3	3	2.1	1	0	4	4	0	1	10
at Missouri Southern	01/24/07	*	35	3	4	.750	2	2	1.000	1	2	.500	1	0	1	2.0	1	0	3	0	3	9	7.8
at Missouri Western	01/27/07	*	38	1	3	.333	0	1	.000	0	0	.000	0	2	2	2.0	1	0	1	3	0	1	2
MISSOURI SOUTHERN	02/01/07	*	30	4	9	.444	1	4	.250	2	2	1.000	0	3	3	2.1	2	0	4	4	0	1	11
at Pittsburg State	02/03/07	*	32	2	6	.333	1	2	.500	1	2	.500	0	0	0	2.0	1	0	7	4	2	0	6
at Southwest Baptist	02/06/07	*	29	0	2	.000	0	0	.000	0	2	.000	0	1	1	1.9	3	0	3	3	0	0	7.2
Totals			22	634	59	140	.421	19	53	.358	22	31	.710	1	41	42	1.9	36	0	82	45	7	29

Career Highs

Points	15, vs Cameron	11/24/06
Field Goals	6, two times	
Field Goal Attempts	11, vs Emporia State	1/3/07
Free Throws	6, vs CSU-Stanislus	11/24/05
Free Throw Attempts	6, vs CSU-Stanislus	11/24/05
Three-Point Field Goals	4, vs St. Mary (Texas)	3/10/06
Three-Point Attempts	7, vs Northwest Missouri	1/6/07
Rebounds	3, three times	
Assists	7, two times	
Steals	4, two times	
Blocked Shots	2, vs Southwestern	12/4/06
Minutes Played	38, two times	

Season Highs

Points	15, vs Cameron	11/24/06
Field Goals	6, vs Cameron	11/24/06
Field Goal Attempts	11, vs Emporia State	1/3/07
3-Point Field Goals	3, vs Cameron	11/18/06
3-Point Attempts	7, two times	
Free Throws	3, vs Lynn	11/25/06
Free Throw Attempts	4, vs Lynn	11/25/06
Rebounds	3, vs Emporia State	1/3/07
Assists	7, at Pittsburg State	2/3/07
Steals	4, two times	
Blocked Shots	2, vs Southwestern	12/4/06
Minutes Played	38, two times	

Career Miscellaneous

Double Figure Scoring	13
Jr.-7	Sr.-9
Double Figure Rebounding	0
Jr.-0	Sr.-0
Games with 5+ Rebounds	0
Jr.-0	Sr.-0
Games with 5+ Assists	10
Jr.-3	Sr.-7
Double-Double Games	0
Jr.-0	Sr.-0

Aebi's Career Stats

YEAR	GP	GS	MIN	AVG	FG	FGA	PCT	3FG	3FGA	PCT	FT	FTA	PCT	OFF	DEF	TOT	AVG	PF	FO	A	TO	BLK	ST	PTS	AVG
2005-06	33	0	459	13.9	57	116	.491	23	54	.426	23	29	.793	3	31	34	1.0	23	0	52	38	3	22	160	4.8
2006-07	22	22	634	28.8	59	140	.421	19	53	.358	22	31	.710	1	41	42	1.9	36	0	82	45	7	29	159	7.2
TOTAL	55	22	1093	19.9	116	256	.453	42	107	.393	45	60	.750	4	72	76	1.4	59	0	134	83	10	51	319	5.8

#11 Renata Germano

6-2 | Sophomore | Forward | Rio de Janero, Brazil | Southeastern Illinois



Opponent	Date	GS	Min	TOTAL			3-PTS			Pct	REBOUNDS			PF	FO	A	TO	Blk	Stl	Pts	Avg			
				FG	FGA	Pct	3FG	FGA	Pct		Off	Def	Tot											
vs Southwestern Oklahoma	11/17/06	13	1	1	1.000	0	0	.000	1	2	500	0	2	2	2.0	1	0	1	0	0	3	3.0		
vs Cameron	11/18/06	10	3	7	.429	0	0	.000	4	5	.800	2	3	5	3.5	2	0	1	0	0	10	6.5		
CAMERON	11/24/06	14	1	5	.200	0	0	.000	5	8	.625	1	3	4	3.7	5	1	1	0	0	7	6.7		
LYNN	11/25/06	18	4	9	.444	0	0	.000	2	3	.667	2	3	5	4.0	2	0	1	0	1	10	7.5		
SOUTHWESTERN (KAN.)	12/04/06	13	1	7	.143	0	0	.000	0	2	.000	2	3	5	4.2	3	0	0	1	0	0	2	6.4	
MISSOURI WESTERN	12/09/06	2	1	1	1.000	0	0	.000	0	0	.000	1	0	1	3.7	0	0	0	0	1	2	5.7		
BENEDICTINE	12/12/06	19	8	12	.667	0	0	.000	0	0	.000	2	2	4	3.7	1	0	1	2	1	16	7.7		
LINCOLN	12/16/06	20	1	3	.333	0	0	.000	4	4	1.000	1	2	3	3.6	2	0	2	3	0	6	7.0		
vs Northwood Univ.	12/19/06	13	4	6	.667	0	0	.000	1	2	.500	3	5	8	4.1	4	0	1	3	3	9	7.2		
vs Glenville State College	12/20/06	5	0	0	.000	0	0	.000	0	0	.000	0	1	1	3.8	1	0	1	3	0	0	0	6.5	
at Central Missouri	12/30/06	3	0	0	.000	0	0	.000	0	0	.000	0	1	1	3.5	0	0	0	1	0	0	0	5.9	
NORTHWEST MISSOURI	01/06/07	17	2	3	.667	0	0	.000	3	4	.750	1	2	3	3.5	3	0	1	1	2	0	7	6.0	
FORT HAYS STATE	01/10/07	19	1	7	.143	0	0	.000	1	2	.500	2	3	5	3.6	4	0	0	1	1	0	3	5.8	
at Truman	01/13/07	7	1	3	.333	0	0	.000	0	0	.000	1	2	3	3.6	4	0	0	1	0	2	5.5		
SOUTHWEST BAPTIST	01/17/07	10	2	2	1.000	0	0	.000	5	6	.833	1	2	3	3.5	0	0	0	1	0	0	9	5.7	
PITTSBURG STATE	01/20/07	10	0	0	.000	0	0	.000	0	0	.000	0	1	1	3.4	1	0	1	1	0	0	0	5.4	
at Missouri Western	01/27/07	2	0	0	.000	0	0	.000	0	0	.000	0	0	0	3.2	0	0	0	1	0	0	0	5.1	
MISSOURI SOUTHERN	02/01/07	5	0	0	.000	0	0	.000	0	0	.000	0	0	0	3.0	0	0	0	0	0	0	0	4.8	
at Pittsburg State	02/03/07	1	0	0	.000	0	0	.000	0	0	.000	0	0	0	2.8	0	0	0	1	0	0	0	4.5	
at Southwest Baptist	02/06/07	9	2	3	.667	0	0	.000	0	0	.000	0	2	2	2.8	3	0	1	3	1	0	4	4.5	
Totals		0	210	32	69	.464	0	0	.000	26	38	.684	19	37	56	2.8	36	1	9	23	14	2	90	4.5

Career Highs

Points	16, vs Benedictine	12/12/06
Field Goals	8, vs Benedictine	12/12/06
Field Goal Attempts	12, vs Benedictine	12/12/06
3-Point Field Goals	-	
3-Point Attempts	-	
Free Throws	5, two times	
Free Throw Attempts	8, vs Cameron	11/24/06
Rebounds	8, vs Northwood	12/19/06
Assists	1, five times	
Steals	1, two times	
Blocked Shots	3, two times	
Minutes Played	20, vs Lincoln	12/16/06

Season Highs

Points	16, vs Benedictine	12/12/06
Field Goals	8, vs Benedictine	12/12/06
Field Goal Attempts	12, vs Benedictine	12/12/06
3-Point Field Goals	-	
3-Point Attempts	-	
Free Throws	5, two times	
Free Throw Attempts	8, vs Cameron	11/24/06
Rebounds	8, vs Northwood	12/19/06
Assists	1, five times	
Steals	1, two times	
Blocked Shots	3, two times	
Minutes Played	20, vs Lincoln	12/16/06

Career Miscellaneous

Double Figure Scoring	3
So.-3	
Double Figure Rebounding	0
So.-0	
Games with 5+ Rebounds	5
So.-5	
Games with 5+ Assists	0
So.-0	
Double-Double Games	0
So.-0	

Germano's Career Stats

YEAR	GP	GS	MIN	AVG	FG	FGA	PCT	3FG	3FGA	PCT	FT	FTA	PCT	OFF	DEF	TOT	AVG	PF	FO	A	TO	BLK	ST	PTS	AVG
2006-07	20	0	210	10.5	32	69	.464	0	0	.000	26	38	.684	19	37	56	2.8	36	1	9	23	14	2	90	4.5
TOTAL	20	0	210	10.5	32	69	.464	0	0	.000	26	38	.684	19	37	56	2.8	36	1	9	23	14	2	90	4.5



#13 Jessica Mainz

5-9 | Sophomore | Guard | Topeka, Kan. | Shawnee Heights HS



Opponent	Date	GS	Min	TOTAL			3-PTS			FT	FTA	Pct	REBOUNDS						PF	FO	A	TO	Blk	Stl	Pts	Avg
				FG	FGA	Pct	3FG	FGA	Pct				Off	Def	Tot	Avg										
vs Southwestern Oklahoma	11/17/06	13	0	0	.000	0	0	.000	0	0	.000	0	1	1	1.0	2	0	5	0	0	2	0	0	2	0	0.0
vs Cameron	11/18/06	16	1	2	.500	0	0	.000	1	2	.500	0	1	1	1.0	2	0	1	1	0	0	0	3	1.5	0.0	
CAMERON	11/24/06	13	1	1	1.000	0	0	.000	3	3	1.000	0	1	1	1.0	1	0	0	0	0	1	5	2.7	0.0		
LYNN	11/25/06	17	2	4	.500	0	0	.000	4	4	1.000	0	4	4	1.8	1	0	3	0	0	0	0	8	4.0	0.0	
SOUTHWESTERN (KAN.)	12/04/06	13	2	2	1.000	0	0	.000	0	1	.000	0	2	2	1.8	1	0	2	1	0	1	0	1	4	4.0	
MISSOURI WESTERN	12/09/06	19	1	3	.333	0	0	.000	2	2	1.000	1	0	1	1.7	0	0	0	0	0	1	4	4.0	0.0		
BENEDICTINE	12/12/06	17	0	0	.000	0	0	.000	0	0	.000	1	1	2	1.7	0	0	4	0	1	6	0	3.4	0.0		
LINCOLN	12/16/06	16	2	3	.667	0	0	.000	0	1	.000	0	1	1	1.6	0	0	4	0	0	0	0	4	3.5	0.0	
vs Northwood Univ.	12/19/06	13	1	2	.500	0	0	.000	0	2	.000	0	3	3	1.8	0	0	3	0	0	0	0	2	3.3	0.0	
vs Glenville State College	12/20/06	17	0	0	.000	0	0	.000	1	2	.500	0	4	4	2.0	2	0	1	0	0	0	1	3.1	0.0		
at Central Missouri	12/30/06	17	2	3	.667	0	0	.000	1	2	.500	1	1	2	2.0	1	0	0	2	0	3	5	3.3	0.0		
EMPORIA STATE	01/03/07	13	1	2	.500	0	0	.000	2	2	1.000	2	0	2	2.0	2	0	0	0	0	1	4	3.3	0.0		
NORTHWEST MISSOURI	01/06/07	24	1	3	.333	0	0	.000	0	2	.000	4	1	5	2.2	2	0	1	0	1	0	2	3.2	0.0		
FORT HAYS STATE	01/10/07	23	2	4	.500	0	0	.000	1	2	.500	0	3	3	2.3	0	0	0	3	2	1	5	3.4	0.0		
at Truman	01/13/07	24	2	3	.667	0	0	.000	1	2	.500	1	4	5	2.5	1	0	4	2	0	0	5	3.5	0.0		
SOUTHWEST BAPTIST	01/17/07	21	4	6	.667	0	0	.000	0	0	.000	2	2	4	2.6	1	0	5	2	0	3	8	3.8	0.0		
PITTSBURG STATE	01/20/07	24	2	5	.400	0	0	.000	0	0	.000	1	3	4	2.6	3	0	7	0	0	2	4	3.8	0.0		
at Missouri Southern	01/24/07	16	2	3	.667	1	1	1.000	1	2	.500	1	2	3	2.7	0	0	4	2	0	1	6	3.9	0.0		
at Missouri Western	01/27/07	19	2	2	1.000	0	0	.000	0	2	.000	2	5	7	2.9	1	0	3	4	0	2	4	3.9	0.0		
MISSOURI SOUTHERN	02/01/07	25	1	2	.500	0	0	.000	4	4	1.000	2	3	5	3.0	0	0	7	0	0	5	6	4.0	0.0		
at Pittsburg State	02/03/07	24	1	4	.250	0	1	.000	0	0	.000	3	2	5	3.1	2	0	4	0	0	0	2	3.9	0.0		
at Southwest Baptist	02/06/07	22	1	4	.250	0	0	.000	3	7	.429	1	2	3	3.1	1	0	1	1	0	0	5	4.0	0.0		
Totals		0	406	31	.58	.534	1	2	.500	24	42	.571	22	46	68	3.1	23	0	59	18	4	29	87	4.0		

Career Highs

Points	13, vs Missouri Valley	1/1/06
Field Goals	5, vs Missouri Valley	1/1/06
Field Goal Attempts	6, two times	
Free Throws	4, two times	11/25/06
Free Throw Attempts	7, vs Southwest Baptist	2/6/07
Three-Point Field Goals	1, at Missouri Southern	1/24/07
Three-Point Attempts	1, four times	
Rebounds	7, at Missouri Western	1/27/07
Assists	7, two times	
Steals	6, vs Benedictine	12/12/06
Blocked Shots	2, vs Fort Hays State	1/10/07
Minutes Played	25, vs Missouri Southern	2/1/07

Season Highs

Points	8, two times	
Field Goals	4, vs Southwest Baptist	1/17/07
Field Goal Attempts	6, vs Southwest Baptist	1/17/07
3-Point Field Goals	1, at Missouri Southern	1/24/07
3-Point Attempts	1, at Missouri Southern	1/24/07
Free Throws	4, two times	
Free Throw Attempts	7, vs Southwest Baptist	2/6/07
Rebounds	7, at Missouri Western	1/27/07
Assists	7, two times	
Steals	6, vs Benedictine	12/12/06
Blocked Shots	2, vs Fort Hays State	1/10/07
Minutes Played	25, vs Missouri Southern	2/1/07

Career Miscellaneous

Double Figure Scoring	2	
Fr-2	So-0	
Double Figure Rebounding	0	
Fr-0	So-0	
Games with 5+ Rebounds	5	
Fr-1	So-4	
Games with 5+ Assists	7	
Fr-3	So-4	
Double-Double Games	0	
Fr-0	So-0	

Mainz's Career Stats

YEAR	GP	GS	MIN	AVG	FG	FGA	PCT	3FG	3FGA	PCT	FT	FTA	PCT	OFF	DEF	TOT	AVG	PF	FO	A	TO	BLK	ST	PTS	AVG
2005-06	22	0	186	8.5	19	34	.559	0	3	.000	16	22	.727	20	23	43	2.0	10	0	19	8	2	22	54	2.5
2006-07	22	0	406	18.5	31	58	.534	1	2	.500	24	42	.571	22	46	68	3.1	23	0	59	18	4	29	87	4.0
TOTAL	44	0	592	13.5	50	92	.543	1	5	.200	40	64	.625	42	69	111	2.5	33	0	78	26	6	51	141	3.2

#15 Nikki Holmes

5-10 | Senior | Guard | Arlington, Texas | Tyler JC



Opponent	Date	GS	Min	TOTAL			3-PTS			REBOUNDS														
				FG	FGA	Pct	3FG	FGA	Pct	FT	FTA	Pct	Off	Def	Tot	Avg	PF	FO	A	TO	Blk	Stl	Pts	Avg
vs Southwestern Oklahoma	11/17/06	8	1	4	.250	0	1	.000	0	0	.000	1	2	3	3.0	0	0	0	0	0	0	2	2.0	
vs Cameron	11/18/06	10	3	5	.600	2	4	.500	1	3	.333	1	1	2	2.5	1	0	1	0	0	0	9	5.5	
CAMERON	11/24/06	14	2	7	.286	1	5	.200	1	2	.500	2	2	4	3.0	2	0	1	4	0	2	6	4.8	
SOUTHWESTERN (KAN.)	12/04/06	10	1	4	.250	0	1	.000	0	0	.000	1	2	3	3.0	1	0	0	2	2	0	2	4.8	
MISSOURI WESTERN	12/09/06	2	1	1	1.000	0	0	.000	0	0	.000	0	0	0	0	2.4	1	0	0	1	0	0	2	4.2
BENEDICTINE	12/12/06	12	3	8	.375	1	3	.333	0	0	.000	0	2	2	2.3	2	0	3	0	0	0	7	4.7	
LINCOLN	12/16/06	14	4	6	.667	2	4	.500	1	2	.500	0	4	4	2.6	0	0	1	1	0	1	11	5.4	
vs Northwood Univ.	12/19/06	17	2	5	.400	1	2	.500	0	0	.000	0	3	3	2.6	0	0	1	1	1	1	5	5.3	
vs Glenville State College	12/20/06	8	0	0	.000	0	0	.000	0	0	.000	0	0	0	0	2.3	0	0	0	0	0	0	4.9	
at Central Missouri	12/30/06	18	2	6	.333	1	4	.250	0	0	.000	0	1	1	2.2	1	0	0	4	0	0	5	4.9	
EMPORIA STATE	01/03/07	8	3	4	.750	0	0	.000	2	2	1.000	0	1	1	2.1	0	0	0	0	0	0	1	8	5.2
NORTHWEST MISSOURI	01/06/07	14	3	7	.429	0	3	.000	0	1	.000	1	4	5	2.3	3	0	3	2	1	0	6	5.3	
FORT HAYS STATE	01/10/07	18	3	8	.375	0	1	.000	0	0	.000	2	3	5	2.5	1	0	0	2	0	2	6	5.3	
at Truman	01/13/07	9	1	2	.500	0	1	.000	2	2	1.000	0	4	4	2.6	2	0	1	2	0	1	4	5.2	
SOUTHWEST BAPTIST	01/17/07	13	1	6	.167	0	3	.000	0	0	.000	0	4	4	2.7	1	0	0	1	0	1	2	5.0	
PITTSBURG STATE	01/20/07	8	3	5	.600	1	3	.333	0	0	.000	0	3	3	2.8	2	0	0	1	0	1	7	5.1	
at Missouri Southern	01/24/07	5	0	2	.000	0	0	.000	0	0	.000	0	0	0	0	2.6	0	0	0	2	0	0	4.8	
at Missouri Western	01/27/07	3	1	2	.500	0	1	.000	0	0	.000	0	0	0	0	2.4	0	0	0	1	0	1	2	4.7
MISSOURI SOUTHERN	02/01/07	9	1	6	.167	0	2	.000	0	0	.000	0	1	1	2.4	3	0	0	0	0	0	2	4.5	
at Pittsburg State	02/03/07	2	0	1	.000	0	0	.000	0	0	.000	0	0	0	0	2.3	0	0	0	0	0	0	4.3	
at Southwest Baptist	02/06/07	12	0	1	.000	0	0	.000	0	0	.000	0	5	5	2.4	1	0	2	1	0	1	0	4.1	
Totals		0	214	35	.90	.389	9	38	.237	7	12	.583	8	42	30	2.4	21	0	13	25	4	12	86	4.1

#20 Holly Henrichs

5-5 | Senior | Guard | Dodge City, Kan. | Dodge City HS



Opponent	Date	TOTAL			3-PTS			REBOUNDS										Pts	Avg					
		GS	Min	FG	FGA	Pct	3FG	FGA	Pct	FT	FTA	Pct	Off	Def	Tot	Avg	PF			FO	A	TO	Blk	Stl
vs Southwestern Oklahoma	11/17/06	7	1	1	1.000	1	1	1.000	0	0	.000	0	0	0	0.0	2	0	0	1	0	0	3	3.0	
vs Cameron	11/18/06	3	0	0	.000	0	0	.000	0	0	.000	0	0	0	0.0	0	0	1	0	0	0	0	1.5	
CAMERON	11/24/06	4	0	0	.000	0	0	.000	0	0	.000	0	0	0	0.0	1	0	0	1	0	0	0	1.0	
LYNN	11/25/06	7	0	0	.000	0	0	.000	0	0	.000	0	0	0	0.0	0	0	0	0	0	0	0	0.8	
SOUTHWESTERN (KAN.)	12/04/06	2	0	0	.000	0	0	.000	0	0	.000	0	0	0	0.0	0	0	0	0	0	0	0	0.6	
BENEDICTINE	12/12/06	5	0	1	.000	0	0	.000	0	0	.000	0	1	1	0.2	0	0	0	1	0	0	0	0.5	
LINCOLN	12/16/06	5	0	0	.000	0	0	.000	0	0	.000	0	1	1	0.3	0	0	2	0	0	0	0	0.4	
vs Northwood Univ.	12/19/06	6	0	0	.000	0	0	.000	0	0	.000	0	2	2	0.5	1	0	1	2	0	0	0	0.4	
at Central Missouri	12/30/06	2	0	0	.000	0	0	.000	2	2	1.000	0	0	0	0.4	0	0	0	0	0	0	2	0.6	
NORTHWEST MISSOURI	01/06/07	3	0	0	.000	0	0	.000	0	0	.000	0	0	0	0.4	0	0	0	0	0	0	0	0.5	
FORT HAYS STATE	01/10/07	4	0	0	.000	0	0	.000	0	0	.000	0	0	0	0.4	1	0	0	0	0	0	0	0.5	
at Truman	01/13/07	3	1	1	1.000	0	0	.000	0	0	.000	0	0	0	0.3	0	0	1	0	0	1	2	0.6	
SOUTHWEST BAPTIST	01/17/07	4	0	0	.000	0	0	.000	0	0	.000	0	0	0	0.3	1	0	0	0	0	0	0	0.5	
PITTSBURG STATE	01/20/07	2	0	0	.000	0	0	.000	2	2	1.000	1	0	1	0.4	0	0	0	0	0	0	2	0.6	
MISSOURI SOUTHERN	02/01/07	3	0	0	.000	0	0	.000	0	0	.000	0	0	0	0.3	0	0	0	0	0	0	1	0.6	
at Pittsburg State	02/03/07	1	0	0	.000	0	0	.000	0	0	.000	0	0	0	0.3	0	0	0	0	0	0	0	0.6	
at Southwest Baptist	02/06/07	3	0	0	.000	0	0	.000	0	0	.000	0	0	0	0.3	0	0	0	0	0	0	0	0.5	
Totals		0	64	2	3	.667	1	1	1.000	4	4	1.000	1	4	5	0.3	6	0	5	5	0	2	9	0.5

Career Highs

Points	5, two times
Field Goals	1, nine times
Field Goal Attempts	2, vs Pittsburg State 1/18/06
Free Throws	4, vs Southwest Baptist 1/19/05
Free Throw Attempts	6, vs Southwest Baptist 1/19/05
Three-Point Field Goals	1, two times
Three-Point Attempts	1, seven times
Rebounds	2, two times
Assists	2, vs Lincoln 12/16/06
Steals	1, nine times
Blocked Shots	1, two times
Minutes Played	8, vs Baker 11/29/03

Season Highs

Points	3, vs Southwestern Okla. 11/17/06
Field Goals	1, two times
Field Goal Attempts	1, three times
3-Point Field Goals	1, vs Southwestern Okla. 11/17/06
3-Point Attempts	1, vs Southwestern Okla. 11/17/06
Free Throws	2, two times
Free Throw Attempts	2, two times
Rebounds	2, vs Northwood 12/19/06
Assists	1, vs Cameron 11/18/06
Steals	1, at Truman 1/13/07
Blocked Shots	-
Minutes Played	7, two times

Career Miscellaneous

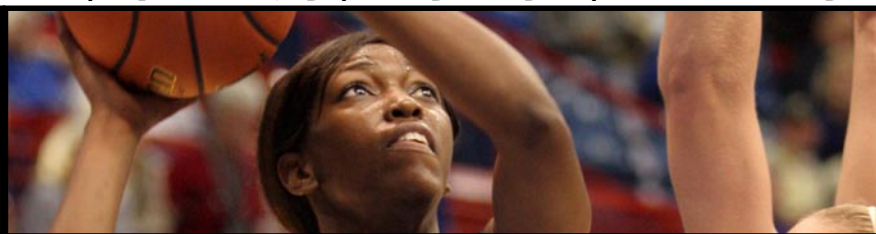
Double Figure Scoring		0	
Fr.-0	So.-0	Jr.-0	Sr.-0
Double Figure Rebounding		0	
Fr.-0	So.-0	Jr.-0	Sr.-0
Games with 5+ Rebounds		0	
Fr.-0	So.-0	Jr.-0	Sr.-0
Games with 5+ Assists		0	
Fr.-0	So.-0	Jr.-0	Sr.-0
Double-Double Games		0	
Fr.-0	So.-0	Jr.-0	Sr.-0

Henrichs' Career Stats

YEAR	GP	GS	MIN	AVG	FG	FGA	PCT	3FG	3FGA	PCT	FT	FTA	PCT	OFF	DEF	TOT	AVG	PF	FO	A	TO	BLK	ST	PTS	AVG
2003-04	15	0	48	3.2	3	8	.375	2	5	.400	0	0	.000	1	3	4	0.3	6	0	4	5	1	2	8	0.5
2004-05	21	0	52	2.5	3	6	.500	0	1	.000	4	7	.571	0	4	4	0.2	4	0	5	9	0	3	10	0.5
2005-06	19	0	59	3.1	2	6	.333	0	2	.000	5	12	.417	0	2	2	0.1	5	0	2	6	1	3	9	0.5
2006-07	17	0	64	3.8	2	3	.667	1	1	1.000	4	4	1.000	1	4	5	0.3	6	0	5	5	0	2	9	0.5
TOTAL	72	0	223	3.1	10	23	.435	3	9	.333	13	23	.565	2	13	15	0.2	21	0	16	25	2	10	36	0.5

#21 Corkey Stiger

5-9 | Junior | Guard | Hopkinsville, Ky. | Trinity Valley CC | Christian County HS



Opponent	Date	TOTAL		3-PTS			REBOUNDS										Pts	Avg						
		GS	Min	FG	FGA	Pct	3FG	FGA	Pct	FT	FTA	Pct	Off	Def	Tot	Avg			PF	FO	A	TO	Blk	Stl
vs Southwestern Oklahoma	11/17/06	22	5	12	.417	2	6	.333	1	2	.500	0	0	0	0.0	2	0	1	1	0	1	13	13.0	
vs Cameron	11/18/06	27	4	9	.444	2	6	.333	7	7	1.000	2	2	4	2.0	3	0	4	2	0	0	17	15.0	
CAMERON	11/24/06	18	6	11	.545	1	5	.200	3	4	.750	0	0	0	1.3	2	0	3	2	0	0	16	15.3	
LYNN	11/25/06	22	3	10	.300	1	5	.200	0	0	.000	1	2	3	1.8	3	0	4	1	0	4	7	13.3	
SOUTHWESTERN (KAN.)	12/04/06	19	3	8	.375	3	4	.750	0	0	.000	0	1	1	1.6	0	0	1	0	0	1	9	12.4	
MISSOURI WESTERN	12/09/06	21	6	16	.375	2	6	.333	0	2	.000	1	2	3	1.8	0	8	6	0	4	14	12.7		
BENEDICTINE	12/12/06	20	6	8	.750	2	3	.667	6	6	1.000	2	3	5	2.3	2	0	5	1	0	3	20	13.7	
LINCOLN	12/16/06	17	4	7	.571	3	6	.500	0	0	.000	1	0	1	2.1	0	0	1	2	0	3	11	13.4	
vs Northwood Univ.	12/19/06	18	7	10	.700	3	6	.500	4	4	1.000	1	2	3	2.2	4	0	2	0	0	2	21	14.2	
vs Glenville State College	12/20/06	28	3	6	.500	0	2	.000	2	2	1.000	2	3	5	2.5	0	0	7	2	0	3	8	13.6	
at Central Missouri	12/30/06	26	5	13	.385	0	6	.000	3	4	.750	1	3	4	2.6	2	0	3	3	0	2	13	13.5	
EMPORIA STATE	01/03/07	28	3	12	.250	1	4	.250	1	2	.500	4	2	6	2.9	2	0	6	1	0	1	8	13.1	
NORTHWEST MISSOURI	01/06/07	28	6	11	.545	2	5	.400	0	0	.000	3	3	6	3.2	1	0	1	3	1	0	14	13.2	
FORT HAYS STATE	01/10/07	25	2	10	.200	1	4	.250	2	2	1.000	5	2	7	3.4	0	0	2	2	0	1	7	12.7	
at Truman	01/13/07	26	6	12	.500	0	1	.000	4	4	1.000	1	2	3	3.4	1	0	4	0	0	8	16	12.9	
SOUTHWEST BAPTIST	01/17/07	24	3	8	.375	0	3	.000	0	0	.000	4	4	8	3.7	0	0	1	0	0	5	6	12.5	
PITTSBURG STATE	01/20/07	30	5	12	.417	1	5	.200	2	2	1.000	1	4	5	3.8	1	0	2	0	0	3	13	12.5	
at Missouri Southern	01/24/07	28	5	11	.455	1	4	.250	1	1	1.000	0	1	1	3.6	0	0	1	2	0	0	12	12.5	
at Missouri Western	01/27/07	25	2	13	.154	0	5	.000	0	0	.000	2	6	8	3.8	1	0	4	2	0	1	4	12.1	
MISSOURI SOUTHERN	02/01/07	26	7	13	.538	2	5	.400	2	3	.667	1	1	2	3.8	1	0	4	3	0	1	18	12.4	
at Pittsburg State	02/03/07	24	11	16	.688	1	2	.500	2	3	.667	2	0	2	3.7	4	0	1	1	0	3	25	13.0	
at Southwest Baptist	02/06/07	24	10	16	.625	3	5	.600	1	1	1.000	0	2	2	3.6	2	0	2	0	0	3	24	13.5	
Totals		0	526	112	244	.459	31	98	.316	41	49	.837	34	45	79	3.6	31	0	67	34	1	49	296	13.5

Career Highs

Points	25, at Pittsburg State 2/3/07
Field Goals	11, at Pittsburg State 2/3/07
Field Goal Attempts	16, three times
3-Point Field Goals	3, two times
3-Point Attempts	6, three times
Free Throws	7, vs Cameron 11/18/06
Free Throw Attempts	7, vs Cameron 11/18/06
Rebounds	8, two times
Assists	8, two times
Steals	8, at Truman 1/13/07
Blocked Shots	1, vs Northwest Missouri 1/6/07
Minutes Played	30, vs Pittsburg State 1/20/07

Season Highs

Points	25, at Pittsburg State 2/3/07
Field Goals	11, at Pittsburg State 2/3/07
Field Goal Attempts	16, three times
3-Point Field Goals	3, two times
3-Point Attempts	6, three times
Free Throws	7, vs Cameron 11/18/06
Free Throw Attempts	7, vs Cameron 11/18/06
Rebounds	8, two times
Assists	8, two times
Steals	8, at Truman 1/13/07
Blocked Shots	1, vs Northwest Missouri 1/6/07
Minutes Played	30, vs Pittsburg State 1/20/07

Career Miscellaneous

Double Figure Scoring	14
Jr.-14	
Double Figure Rebounding	0
Jr.-0	
Games with 5+ Rebounds	6
Jr.-6	
Games with 5+ Assists	4
Jr.-4	
Double-Double Games	0
Jr.-0	

Stiger's Career Stats

YEAR	GP	GS	MIN	AVG	FG	FGA	PCT	3FG	3FGA	PCT	FT	FTA	PCT	OFF	DEF	TOT	AVG	PF	FO	A	TO	BLK	ST	PTS	AVG
2006-07	22	0	526	23.9	112	244	.459	31	98	.316	41	49	.837	34	45	79	3.6	31	0	67	34	1	49	296	13.5
TOTAL	22	0	526	23.9	112	244	.459	31	98	.316	41	49	.837	34	45	79	3.6	31	0	67	34	1	49	296	13.5

1993, 2003, 2004, 2005, 2006 MIAA Champs • 2005 NCAA Champs



#23 Stephanie Wittman

5-10 | Sophomore | Guard | Salina, Kan. | Sacred Heart HS



Opponent	Date	GS	TOTAL				3-PTS				REBOUNDS													
			Min	FG	FGA	Pct	3FG	FGA	Pct	FT	FTA	Pct	Off	Def	Tot	Avg	PF	FO	A	TO	Blk	Stl	Pts	Avg
vs Southwestern Oklahoma	11/17/06	6	0	2	2.000	0	1	1.000	0	0	.000	2	0	2	2.0	0	0	0	0	1	0	0	0.0	
vs Cameron	11/18/06	2	0	1	1.000	0	1	1.000	0	0	.000	0	0	0	1.0	0	0	0	0	0	0	0	0.0	
CAMERON	11/24/06	4	0	1	1.000	0	0	.000	1	2	.500	0	0	0	0.7	0	0	1	0	0	0	1	0.3	
LYNN	11/25/06	8	0	1	1.000	0	1	1.000	0	0	.000	0	2	2	1.0	0	0	1	1	0	0	0	0.3	
SOUTHWESTERN (KAN.)	12/04/06	2	1	2	.500	0	0	.000	0	0	.000	0	0	0	0.8	0	0	0	0	1	1	2	0.6	
BENEDICTINE	12/12/06	3	0	0	.000	0	0	.000	0	0	.000	0	0	0	0.7	0	0	1	0	0	1	0	0.5	
LINCOLN	12/16/06	6	0	1	1.000	0	1	1.000	2	2	1.000	1	1	2	0.9	0	0	0	1	0	0	2	0.7	
vs Northwood Univ.	12/19/06	6	0	1	1.000	0	0	.000	1	2	.500	0	0	0	0.8	0	0	0	0	0	0	1	0.8	
at Central Missouri	12/30/06	2	0	0	.000	0	0	.000	0	0	.000	0	2	2	0.9	0	0	0	0	0	0	0	0.7	
NORTHWEST MISSOURI	01/06/07	6	0	2	.000	0	0	.000	0	0	.000	0	0	0	0.8	0	0	0	1	0	0	0	0.6	
FORT HAYS STATE	01/10/07	9	1	3	.333	0	0	.000	0	0	.000	0	1	1	0.8	0	0	1	0	0	1	2	0.7	
SOUTHWEST BAPTIST	01/17/07	6	0	2	2.000	0	1	1.000	0	0	.000	2	1	3	1.0	0	0	2	0	0	0	0	0.7	
PITTSBURG STATE	01/20/07	2	1	1	1.000	1	1	1.000	0	0	.000	0	1	1	1.0	0	0	0	0	0	1	3	0.8	
at Pittsburg State	02/03/07	1	0	0	.000	0	0	.000	0	0	.000	0	0	0	0.9	0	0	0	0	0	0	0	0.8	
at Southwest Baptist	02/06/07	3	0	1	1.000	0	0	.000	0	0	.000	0	0	0	0.9	1	0	0	1	0	0	0	0.7	
Totals		0	66	3	18	.167	1	6	.167	4	6	.667	5	8	13	0.9	1	0	6	4	2	4	11	0.7

Career Highs

Points	7, vs Missouri Valley	1/1/06
Field Goals	3, vs Missouri Valley	1/1/06
Field Goal Attempts	6, vs Missouri Valley	1/1/06
Free Throws	4, vs CSU-Stanislaus	11/24/05
Free Throw Attempts	6, vs CSU-Stanislaus	11/24/05
Three-Point Field Goals	2, vs West Virginia Tech	11/25/05
Three-Point Attempts	2, three times	
Rebounds	3, vs Southwest Baptist	1/17/07
Assists	4, vs Central Okla.	11/18/05
Steals	1, vs Southwestern	12/4/06
Blocked Shots	1, six times	
Minutes Played	9, two times	

Season Highs

Points	3, vs Pittsburg State	1/20/07
Field Goals	1, three times	
Field Goal Attempts	3, vs Fort Hays State	1/10/07
3-Point Field Goals	1, vs Pittsburg State	1/20/07
3-Point Attempts	1, four times	
Free Throws	2, vs Lincoln	12/16/06
Free Throw Attempts	2, two times	
Rebounds	3, vs Southwest Baptist	1/17/07
Assists	1, two times	
Steals	2, vs Southwest Baptist	1/17/07
Blocked Shots	1, two times	
Minutes Played	9, vs Fort Hays State	1/10/07

Career Miscellaneous

Double Figure Scoring	0
Fr-0	So.-0
Double Figure Rebounding	0
Fr-0	So.-0
Games with 5+ Rebounds	0
Fr-0	So.-0
Games with 5+ Assists	0
Fr-0	So.-0
Double-Double Games	0
Fr-0	So.-0

Wittman's Career Stats

YEAR	GP	GS	MIN	AVG	FG	FGA	PCT	3FG	3FGA	PCT	FT	FTA	PCT	OFF	DEF	TOT	AVG	PF	FO	A	TO	BLK	ST	PTS	AVG
2005-06	19	0	78	4.1	13	30	.433	5	10	.500	10	12	.833	2	12	14	0.7	9	0	14	8	3	0	41	2.2
2006-07	15	0	66	4.4	3	18	.167	1	6	.167	4	6	.667	5	8	13	0.9	1	0	6	4	2	4	11	0.7
TOTAL	34	0	144	4.2	16	48	.333	6	16	.375	14	18	.778	7	20	27	0.8	10	0	20	12	5	4	52	1.5

#24 Karla Tailele

5-6 | Junior | Guard | Laie, Hawaii | Hutchinson CC | Kahuku HS



Opponent	Date	TOTAL				3-PTS				REBOUNDS								PF	FO	A	TO	Blk	Stl	Pts	Avg
		GS	Min	FG	FGA	Pct	3FG	FGA	Pct	FT	FTA	Pct	Off	Def	Tot	Avg									
vs Southwestern Oklahoma	11/17/06	8	3	3	1.000	1	1	1.000	1	1	1.000	0	0	0	0.0	0	0	1	0	0	1	8	8.0		
SOUTHWESTERN (KAN.)	12/04/06	2	0	0	.000	0	0	.000	0	0	.000	0	0	0	0.0	2	0	0	0	0	0	0	4.0		
Totals		0	10	3	3	1.000	1	1	1.000	1	1	1.000	0	0	0	0.0	2	0	1	0	0	1	8	4.0	

Totals		0	10	3	3	1.000	1	1	1.000	1	1	1.000	0	0	0	0.0	2	0	1	0	0	1	8	4.0
--------	--	---	----	---	---	-------	---	---	-------	---	---	-------	---	---	---	-----	---	---	---	---	---	---	---	-----

Career Highs

Points	8, vs Southwestern Okla.	11/17/06
Field Goals	3, vs Southwestern Okla.	11/17/06
Field Goal Attempts	3, vs Southwestern Okla.	11/17/06
Free Throws	1, vs Southwestern Okla.	11/17/06
Free Throw Attempts	1, vs Southwestern Okla.	11/17/06
Three-Point Field Goals	1, vs Southwestern Okla.	11/17/06
Three-Point Attempts	1, vs Southwestern Okla.	11/17/06
Rebounds	-	
Assists	1, vs Southwestern Okla.	11/17/06
Steals	1, vs Southwestern Okla.	11/17/06
Blocked Shots	-	
Minutes Played	8, vs Southwestern Okla.	11/17/06

Season Highs

Points	8, vs Southwestern Okla.	11/17/06
Field Goals	3, vs Southwestern Okla.	11/17/06
Field Goal Attempts	3, vs Southwestern Okla.	11/17/06
Free Throws	1, vs Southwestern Okla.	11/17/06
Free Throw Attempts	1, vs Southwestern Okla.	11/17/06
Three-Point Field Goals	1, vs Southwestern Okla.	11/17/06
Three-Point Attempts	1, vs Southwestern Okla.	11/17/06
Rebounds	-	
Assists	1, vs Southwestern Okla.	11/17/06
Steals	1, vs Southwestern Okla.	11/17/06
Blocked Shots	-	
Minutes Played	8, vs Southwestern Okla.	11/17/06

Career Miscellaneous

Double Figure Scoring	0
Jr.-0	
Double Figure Rebounding	0
Jr.-0	
Games with 5+ Rebounds	0
Jr.-0	
Games with 5+ Assists	0
Jr.-0	
Double-Double Games	0
Jr.-0	

Tailele's Career Stats

YEAR	GP	GS	MIN	AVG	FG	FGA	PCT	3FG	3FGA	PCT	FT	FTA	PCT	OFF	DEF	TOT	AVG	PF	FO	A	TO	BLK	ST	PTS	AVG
2006-07	2	0	10	5.0	3	3	1.000	1	1	1.000	1	1	1.000	0	0	0	0.0	2	0	1	0	0	1	8	4.0
TOTAL	2	0	10	5.0	3	3	1.000	1	1	1.000	1	1	1.000	0	0	0	0.0	2	0	1	0	0	1	8	4.0

1993, 2003, 2004, 2005, 2006 MIAA Champs • 2005 NCAA Champs



#25 Megan Sullivan

6-1 | Senior | Forward | Spring Hill, Kan. | Spring Hill HS



Opponent	Date	GS	Min	TOTAL			3-PTS			FT	FTA	Pct	REBOUNDS														Pts	Avg
				FG	FGA	Pct	3FG	FGA	Pct				Off	Def	Tot	Avg	PF	FO	A	TO	Blk	Stl						
vs Southwestern Oklahoma	11/17/06	*	18	1	5	.200	0	0	.000	0	0	.000	1	2	3	3.0	3	0	1	1	0	2	2	2.0				
vs Cameron	11/18/06	*	12	4	7	.571	0	0	.000	0	0	.000	2	0	2	2.5	2	0	0	2	0	1	8	5.0				
CAMERON	11/24/06	*	18	1	3	.333	0	0	.000	0	0	.000	1	1	2	2.3	1	0	1	1	0	2	2	4.0				
LYNN	11/25/06	*	18	4	10	.400	0	0	.000	2	2	1.000	2	3	5	3.0	0	0	0	2	0	3	10	5.5				
SOUTHWESTERN (KAN.)	12/04/06	*	25	7	13	.538	0	0	.000	0	0	.000	2	4	6	3.6	0	0	2	2	0	2	14	7.2				
MISSOURI WESTERN	12/09/06	*	17	1	5	.200	0	0	.000	0	2	.000	2	3	5	3.8	3	0	1	0	1	1	2	6.3				
BENEDICTINE	12/12/06	*	19	4	6	.667	0	0	.000	1	3	.333	3	1	4	3.9	1	0	1	1	0	0	9	6.7				
LINCOLN	12/16/06	*	20	3	6	.500	0	0	.000	0	0	.000	3	1	4	3.9	0	0	0	0	0	0	6	6.6				
vs Northwood Univ.	12/19/06	*	13	2	4	.500	0	0	.000	0	2	.000	0	2	2	3.7	2	0	2	5	0	1	4	6.3				
vs Glenville State College	12/20/06	*	19	5	8	.625	0	0	.000	1	2	.500	1	0	1	3.4	4	0	1	1	0	1	11	6.8				
at Central Missouri	12/30/06	*	15	1	4	.250	0	0	.000	1	2	.500	1	4	5	3.5	0	0	1	0	0	0	3	6.5				
EMPORIA STATE	01/03/07	*	23	2	5	.400	0	0	.000	0	0	.000	3	4	7	3.8	3	0	2	0	0	0	4	6.3				
NORTHWEST MISSOURI	01/06/07	*	11	0	1	.000	0	0	.000	0	0	.000	0	1	1	3.6	4	0	1	1	0	0	5	5.8				
FORT HAYS STATE	01/10/07	*	10	3	4	.750	0	0	.000	1	1	1.000	2	0	2	3.5	0	0	1	1	0	1	7	5.9				
at Truman	01/13/07	*	16	1	4	.250	0	0	.000	0	0	.000	0	1	1	3.3	1	0	2	3	0	0	2	5.6				
SOUTHWEST BAPTIST	01/17/07	*	13	5	8	.625	0	0	.000	0	0	.000	1	0	1	3.2	4	0	3	2	0	0	10	5.9				
PITTSBURG STATE	01/20/07	*	21	3	7	.429	0	0	.000	2	2	1.000	2	3	5	3.3	1	0	0	0	2	0	8	6.0				
at Missouri Southern	01/24/07	*	21	3	8	.375	0	0	.000	0	0	.000	1	3	4	3.3	2	0	0	1	0	1	6	6.0				
at Missouri Western	01/27/07	*	11	1	4	.250	0	0	.000	1	2	.500	0	1	1	3.2	1	0	0	2	0	0	3	5.8				
MISSOURI SOUTHERN	02/01/07	*	26	0	3	.000	0	0	.000	0	0	.000	2	2	4	3.3	1	0	1	2	0	0	0	5.6				
at Pittsburg State	02/03/07	*	14	1	2	.500	0	0	.000	1	2	.500	1	3	4	3.3	2	0	1	3	1	0	3	5.4				
at Southwest Baptist	02/06/07	*	23	2	7	.286	0	0	.000	3	4	.750	5	3	8	3.5	0	0	5	0	0	2	7	5.5				
Totals			22	383	54	124	.435	0	0	.000	13	24	.542	35	42	77	3.5	35	0	26	30	4	17	121	5.5			

Career Highs

Points	20, at Truman	12/30/05
Field Goals	9, vs Cameron	12/21/05
Field Goal Attempts	16, vs Cameron	12/21/05
Free Throws	6, vs Pittsburg State	1/18/06
Free Throw Attempts	6, three times	
Three-Point Field Goals	—	
Three-Point Attempts	1, at Northwest Missouri	2/16/05
Rebounds	14, vs Missouri Southern	2/4/06
Assists	5, vs Southwest Baptist	2/6/07
Steals	5, vs Rockhurst	11/17/04
Blocked Shots	3, three times	
Minutes Played	39, vs Missouri Southern	2/4/06

Season Highs

Points	14, vs Southwestern	12/4/06
Field Goals	7, vs Southwestern	12/04/06
Field Goal Attempts	13, vs Southwestern	12/4/06
3-Point Field Goals	-	
3-Point Attempts	-	
Free Throws	3, vs Southwest Baptist	2/6/07
Free Throw Attempts	4, vs Southwest Baptist	2/6/07
Rebounds	8, vs Southwest Baptist	2/6/07
Assists	5, vs Southwest Baptist	2/6/07
Steals	3, vs Lynn	11/25/06
Blocked Shots	2, vs Pittsburg State	1/20/07
Minutes Played	26, vs Missouri Southern	2/1/07

Career Miscellaneous

Double Figure Scoring		19	
Fr.-0	So.-4	Jr.-11	Sr.-4
Double Figure Rebounding		5	
Fr.-0	So.-1	Jr.-4	Sr.-0
Games with 5+ Rebounds		46	
Fr.-2	So.-14	Jr.-23	Sr.-7
Games with 5+ Assists		1	
Fr.-0	So.-0	Jr.-0	Sr.-1
Double-Double Games		2	
Fr.-0	So.-0	Jr.-2	Sr.-0

#32 Brooke Ubelaker

5-11 | Senior | Forward | Osborne, Kan. | Osborne HS



Opponent	Date	GS	Min	TOTAL			3-PTS			REBOUNDS														Pts	Avg
				FG	FGA	Pct	3FG	FGA	Pct	FT	FTA	Pct	Off	Def	Tot	Avg	PF	FO	A	TO	Blk	Stl			
vs Southwestern Oklahoma	11/17/06 *	25	4	10	.400	4	10	.400	2	2	1.000	0	3	3	3.0	1	0	6	0	0	2	14	14.0		
vs Cameron	11/18/06 *	30	6	5	.800	2	2	1.000	1	6	.167	1	6	7	5.0	3	0	4	1	0	0	11	12.5		
CAMERON	11/24/06 *	29	6	11	.545	4	6	.667	2	2	1.000	1	4	5	5.0	0	0	4	0	0	0	18	14.3		
LYNN	11/25/06 *	23	5	5	1.000	3	3	1.000	4	6	.667	2	5	7	5.5	0	0	0	2	0	0	17	15.0		
SOUTHWESTERN (KAN.)	12/04/06 *	30	3	12	.250	2	8	.250	2	2	1.000	2	5	7	5.8	1	0	4	2	1	2	10	14.0		
MISSOURI WESTERN	12/09/06 *	36	3	11	.273	0	3	.000	7	7	1.000	2	7	9	6.3	1	0	1	1	0	1	13	13.8		
BENEDICTINE	12/12/06 *	24	4	9	.444	1	3	.333	0	0	.000	1	2	3	5.9	0	0	3	1	0	0	9	13.1		
LINCOLN	12/16/06 *	26	7	15	.467	3	6	.500	1	1	1.000	4	7	11	6.5	2	0	1	0	0	0	18	13.8		
vs Northwood Univ.	12/19/06 *	27	8	14	.571	4	7	.571	3	4	.750	2	4	6	6.4	3	0	2	2	0	0	23	14.8		
vs Glenville State College	12/20/06 *	34	6	15	.400	3	7	.429	0	0	.000	5	2	7	6.5	0	0	0	4	1	1	15	14.8		
at Central Missouri	12/30/06 *	22	7	8	.875	3	4	.750	0	0	.000	4	2	6	6.5	3	0	0	2	0	1	17	15.0		
EMPORIA STATE	01/03/07 *	34	3	11	.273	2	8	.250	4	5	.800	0	3	3	6.2	2	0	1	1	1	2	12	14.8		
NORTHWEST MISSOURI	01/06/07 *	30	7	11	.636	2	6	.333	2	2	1.000	1	4	5	6.1	0	0	4	2	0	1	18	15.0		
FORT HAYS STATE	01/10/07 *	21	4	5	.800	3	4	.750	2	2	1.000	0	6	6	6.1	3	0	1	1	0	0	13	14.9		
at Truman	01/13/07 *	29	6	10	.600	5	7	.714	0	0	.000	1	1	2	5.8	3	0	2	0	2	1	17	15.0		
SOUTHWEST BAPTIST	01/17/07 *	27	7	15	.467	4	11	.364	0	0	.000	0	1	1	5.5	0	0	2	0	1	1	18	15.2		
PITTSBURG STATE	01/20/07 *	32	7	13	.538	3	8	.375	4	5	.800	3	5	8	5.6	2	0	1	2	1	1	21	15.5		
at Missouri Southern	01/24/07 *	32	3	13	.231	3	11	.273	1	2	.500	0	4	4	5.6	3	0	3	4	0	2	10	15.2		
at Missouri Western	01/27/07 *	37	5	13	.385	1	9	.111	1	1	1.000	3	4	7	5.6	0	0	1	2	0	2	12	15.1		
MISSOURI SOUTHERN	02/01/07 *	31	5	9	.556	3	5	.600	3	3	1.000	0	1	1	5.4	1	0	2	1	0	3	16	15.1		
at Pittsburg State	02/03/07 *	38	3	14	.214	2	10	.200	2	2	1.000	1	5	6	5.4	2	0	1	0	1	3	10	14.9		
at Southwest Baptist	02/06/07 *	28	8	12	.667	4	7	.571	1	2	.500	2	1	3	5.3	1	0	1	1	0	1	21	15.1		
Totals		22	645	115	241	.477	61	145	.421	42	49	.857	35	82	117	5.3	31	0	44	29	8	24	333	15.1	

Career Highs

Points	31, two times	
Field Goals	13, at Truman	12/30/05
Field Goal Attempts	24, vs Cameron	12/21/05
Free Throws	8, vs Northwest Missouri	3/6/04
Free Throw Attempts	9, vs Northwest Missouri	3/6/04
Three-Point Field Goals	6, at Northwest Missouri	2/22/06
Three-Point Attempts	12, vs Cameron	12/21/05
Rebounds	12, two times	
Assists	6, two times	
Steals	5, vs Truman State	1/17/04
Blocked Shots	2, five times	
Minutes Played	43, vs Emporia State	3/13/06

Season Highs

Points	23, vs Northwood	12/19/06
Field Goals	8, vs Northwood	12/19/06
Field Goal Attempts	15, two times	
3-Point Field Goals	5, at Truman	1/13/07
3-Point Attempts	11, two times	
Free Throws	7, vs Missouri Western	12/9/06
Free Throw Attempts	7, vs Missouri Western	12/9/06
Rebounds	11, vs Lincoln	12/16/06
Assists	6, vs Southwestern Okla.	11/17/06
Steals	3, at Pittsburg State	2/3/07
Blocked Shots	2, at Truman	1/13/07
Minutes Played	38, at Pittsburg State	2/3/07

Career Miscellaneous

Double Figure Scoring		94	
Fr.-17	So.-28	Jr.-28	Sr.-21
Double Figure Rebounding		7	
Fr.-4	So.-1	Jr.-1	Sr.-1
Games with 5+ Rebounds		80	
Fr.-18	So.-27	Jr.-21	Sr.-14
Games with 5+ Assists		3	
Fr.-0	So.-0	Jr.-2	Sr.-1
Double-Double Games		7	
Fr.-4	So.-1	Jr.-1	Sr.-1

Ubelaker's Career Stats																									
YEAR	GP	GS	MIN	AVG	FG	FGA	PCT	3FG	3FGA	PCT	FT	FTA	PCT	OFF	DEF	TOT	AVG	PF	FO	A	TO	BLK	ST	PTS	AVG



#33 Hope Gregory

5-10 | Freshman | Guard | Cheney, Kan. | Cheney HS



Opponent	Date	TOTAL					3-PTS			REBOUNDS														
		GS	Min	FG	FGA	Pct	3FG	FGA	Pct	FT	FTA	Pct	Off	Def	Tot	Avg	PF	FO	A	TO	Blk	Stl	Pts	Avg
vs Southwestern Oklahoma	11/17/06	3	0	0	.000	0	0	.000	0	0	.000	0	0	0	0.0	0	0	0	1	0	0	0	0	0.0
vs Cameron	11/18/06	2	0	1	.000	0	0	.000	0	0	.000	1	0	1	0.5	0	0	0	0	0	0	0	0	0.0
CAMERON	11/24/06	4	0	0	.000	0	0	.000	0	0	.000	1	2	3	1.3	1	0	0	0	0	0	0	0	0.0
LYNN	11/25/06	8	0	0	.000	0	0	.000	2	2	1.000	0	1	1	1.3	0	0	1	0	0	0	0	2	0.5
SOUTHWESTERN (KAN.)	12/04/06	1	0	0	.000	0	0	.000	0	0	.000	0	1	1	1.2	0	0	0	0	0	0	0	0	0.4
Totals		0	18	0	1	.000	0	0	.000	2	2	1.000	2	4	6	1.2	1	0	1	1	0	0	2	0.4

Career Highs		
Points	2, vs Lynn	11/25/06
Field Goals	-	
Field Goal Attempts	1, vs Cameron	11/18/06
3-Point Field Goals	-	
3-Point Attempts	-	
Free Throws	2, vs Lynn	11/25/06
Free Throw Attempts	2, vs Lynn	11/25/06
Rebounds	3, vs Cameron	11/24/06
Assists	1, vs Lynn	11/25/06
Steals	-	
Blocked Shots	-	
Minutes Played	8, vs Lynn	11/25/06

Season Highs		
Points	2, vs Lynn	11/25/06
Field Goals	-	
Field Goal Attempts	1, vs Cameron	11/18/06
3-Point Field Goals	-	
3-Point Attempts	-	
Free Throws	2, vs Lynn	11/25/06
Free Throw Attempts	2, vs Lynn	11/25/06
Rebounds	3, vs Cameron	11/24/06
Assists	1, vs Lynn	11/25/06
Steals	-	
Blocked Shots	-	
Minutes Played	8, vs Lynn	11/25/06

Career Miscellaneous	
Double Figure Scoring	0
Fr-0	
Double Figure Rebounding	0
Fr-0	
Games with 5+ Rebounds	0
Fr-0	
Games with 5+ Assists	0
Fr-0	
Double-Double Games	0
Fr-0	

Gregory's Career Stats																									
YEAR	GP	GS	MIN	AVG	FG	FGA	PCT	3FG	3FGA	PCT	FT	FTA	PCT	OFF	DEF	TOT	AVG	PF	FO	A	TO	BLK	ST	PTS	AVG
2006-07	5	0	18	3.6	0	1	.000	0	0	.000	2	2	1.000	2	4	6	1.2	1	0	1	1	0	0	2	0.4
TOTAL	5	0	18	3.6	0	1	.000	0	0	.000	2	2	1.000	2	4	6	1.2	1	0	1	1	0	0	2	0.4



Exhibition Game 1

Washburn at Kansas

11/05/06 • at Allen Fieldhouse (Lawrence, Kan.)

Score by Periods	1st	2nd	Total	FB%	3FB%	FT%
Washburn	29	33	62	.375	.364	.783
Kansas	24	44	68	.429	.000	.714

VISITORS: Washburn (0-1 exhibition)

#	Player	tot-fg		3-pt		rebounds				fta	of	de	tot	pf	tp	a	to	blk	s	min
		fg	tfg	fg	tfg	fta	of	de												
04	Holmes, Amanda	f	0	6	0	1	2	2	0	2	2	3	2	1	4	1	1	22		
25	Sullivan, Megan	f	3	6	1	1	2	4	2	5	7	2	9	2	3	0	1	29		
32	Ubelaker, Brooke	f	3	10	1	6	0	0	2	2	3	7	4	4	0	2	37			
03	Keeley, Cindy	g	4	8	3	5	4	4	1	2	3	2	15	1	1	0	1	31		
10	Aebi, Jessica	g	4	7	2	4	1	0	1	1	4	11	5	2	0	1	34			
05	Hellen, K.G.	g	0	0	0	0	0	0	0	0	0	0	0	0	0	0	0	1		
11	Germano, Renata	0	1	0	0	0	1	0	2	2	3	0	0	0	2	0	0	7		
14	Taille, Karla	1	2	1	1	0	0	0	0	0	1	3	0	1	0	0	6			
15	Holmes, Nikki	0	2	0	1	0	0	0	1	1	2	0	1	1	0	1	7			
21	Stiger, Sequorhea	3	6	0	3	9	11	2	1	3	1	15	0	3	0	1	27			
TEAM																				
Totals.....		18	48	8	22	18	23	9	22	31	21	62	14	26	1	8	200			

HOME TEAM: Kansas (1-0 exhibition)

#	Player	fg		3-pt		rebounds										fta	of	de	tot	pf	tp	a	to	blk	s	min
		fg	tfg	fg	tfg	fta	of	de	tot	pf	tp	a	to	blk	s											
10	Boyd, Jamie	f	3	4	0	0	0	1	0	1	1	6	0	0	0	0	0	0	0	0	0	19				
13	McIntosh, Taylor	f	2	2	0	0	1	2	2	3	5	4	5	0	1	1	1	1	22	22	22	22				
20	Morris, Sade	f	2	3	0	0	0	1	0	1	1	4	0	3	0	2	16	16	16	16	16	16				
03	Catic, Ivana	g	0	0	0	0	0	0	0	0	0	0	0	3	0	0	9	9	9	9	9	9				
21	Mosley, Shaquinn	g	2	7	0	2	4	5	0	4	4	1	8	6	7	0	2	30	30	30	30	30				
00	Jacobs, LaChelda	4	16	0	1	2	2	0	3	3	3	10	2	2	0	4	22	22	22	22	22	22				
02	Kohn, Kelly	2	6	0	1	3	4	1	4	5	7	1	3	0	1	24	24	24	24	24	24	24				
04	McCray, Danielle	6	10	0	0	1	2	3	2	5	13	0	2	0	1	0	20	20	20	20	20	20				
11	Zinic, Marija	3	8	0	0	9	12	4	3	7	15	1	2	3	0	38	38	38	38	38	38	38				
TEAM		2 4 6																								
Totals.....		24	56	0	4	20	28	14	23	37	68	13	20	4	11	200	200	200	200	200	200	200				

Officials: Jeffrey Stromgren (R), Debbie Adams (U1), Ann Schroeder (2)

Technical fouls: Washburn-None. Kansas-None.

Attendance: 1689

Notes: WU No. 6 in Presason WBCA Division II Poll ... the Lady Blues led at the break 29-24 after shooting 42 percent from the field while holding the Jayhawks to 32 percent shooting. Washburn would push their lead to nine in the second half at the 16:49 mark, but Washburn led the lead slip away as they were held to 33 percent shooting in the second half while committing 13 turnovers that turned into 12 points for the Jayhawks and the 68-62 win ... senior Cindy Keeley and junior transfer Sequorhea Stiger led the Lady Blues with 15 points. Senior Jessica Aebi scored 11.

Exhibition Game 2

Washburn at Missouri-Kansas City

11/07/06 at Kansas City, Mo. (Municipal Auditorium)

Score by Periods	1st	2nd	Total	FB%	3FB%	FT%
Washburn	29	44	73	.381	.333	.600
Missouri-Kansas	26	44	70	.371	.200	.737

VISITORS: Washburn (1-1 exhibition)

#	Player	fg	fg	3-pt	rebounds	fta	of	de	tot	pf	a	to	blk	s	min		
04	Holmes, Amanda	f	3	9	1	5	8	4	6	10	3	12	1	0	0	26	
25	Sullivan, Megan	f	2	5	0	3	6	3	7	10	3	7	2	1	0	1	21
32	Ubelaker, Brooke	f	4	12	4	7	2	2	2	4	3	14	2	1	0	4	31
03	Keeley, Cindy	g	1	2	0	0	0	1	1	2	4	2	1	2	0	0	21
10	Aebi, Jessica	g	1	4	0	3	6	0	0	3	3	1	8	4	0	3	27
05	Hellen, K.G.	g	2	3	0	1	0	1	0	0	0	2	4	2	0	0	9
11	Germano, Renata	g	1	5	0	0	1	6	2	4	6	1	3	0	1	2	11
13	Mainz, Jessica	g	0	0	0	0	0	1	0	1	0	0	0	0	1	0	1
14	Taille, Karla	g	0	2	0	2	0	0	0	1	1	0	0	1	2	1	8
15	Holmes, Nikki	g	1	3	0	0	0	0	1	1	2	2	0	0	0	0	7
20	Henrichs, Holly	g	0	0	0	0	0	0	0	0	0	1	0	0	0	0	4
21	Stiger, Sequorhea	g	8	16	1	6	1	1	0	3	3	1	18	3	2	0	27
23	Wittman, Steph.	g	1	2	1	1	0	0	0	1	1	3	0	1	0	2	6
33	Gregory, Hope	g	0	0	0	0	0	0	0	0	0	0	0	0	0	0	1
TEAM																	
Totals		24 63 7 21 18 30 16 31 47 21 73 16 18 3 13 200															

HOME TEAM: Missouri-Kansas City (1-1 exhibition)

#	Player	tot-fg		3-pt		rebounds		fta	of	de	tot	pf	tp	a	to	blk	s	min
		fg	tga	fg	tga	fta	of											
55	Brown, Stephanie	f	4	9	0	0	3	5	6	4	10	3	11	0	3	0	0	23
13	Klein, Alysa	c	4	6	0	0	3	3	0	5	2	11	1	4	1	0	0	18
05	Ortega, Jowan	g	6	9	0	1	2	2	1	2	3	4	14	4	0	0	2	28
20	Beer, Tobey	g	1	5	1	4	0	1	0	5	5	1	3	4	3	0	3	26
33	Morris, Chazny	g	3	12	0	3	3	4	3	5	8	1	9	2	2	0	3	27
03	Emerson, Myleka	2	5	1	1	0	0	0	1	1	2	5	0	0	0	0	9	9
10	Radke, Sierra	0	1	0	0	0	0	0	1	1	0	1	0	2	0	0	4	4
22	Fields, Lindsey	0	1	0	0	0	0	0	0	0	1	0	1	0	0	0	0	4
24	Wimberly, Heather	0	2	0	0	0	0	0	1	1	3	0	0	0	0	0	1	11
25	Waelen, Marta	1	2	0	0	1	2	0	1	1	3	3	0	1	0	0	9	9
40	Mead, Leigh	0	7	0	5	0	0	0	1	1	1	0	1	0	0	0	0	12
43	Picconi, Brittany	4	9	1	4	2	2	1	0	1	0	11	1	0	0	0	0	24
44	Graham, Brittany	1	2	1	2	0	0	0	2	2	1	3	0	0	0	1	5	5
TEAM																		
Totals																		

Officials: Doug Knight, Harvey Randle, Ann Schroeder

Technical fouls: WU-None. UMKC-None.

Attendance: 200

Notes: WU leads from start to finish beating Kangaroos for 3rd straight season

Exhibition Game 3

Washburn vs Icahob Golf Team

11/10/06 at Topeka, Kan./Lee Arena

Score by Periods	1st	2nd	Total	FB%	3PT%	FT%
WU Golfers	40	39	79	.405	.412	.800
Washburn	29	36	65	.400	.160	.813

VISITORS: Washburn Golf Team (1-0 exhibition)

#	Player	tot-fg		3-pt		rebounds					fta	of	de	tot	pf	tp	a	to	blk	s	min
		fg	tfg	fg	tfg	fta	of	de	tot												
10	Wempe,Sam	f	11	18	6	9	4	1	3	4	1	32	1	1	0	2	27				
91	Robbins,John	f	3	7	0	1	0	0	3	6	9	0	6	1	0	1	0	1	23		
01	Ewald,Matt	c	2	11	0	0	0	0	4	4	3	4	2	2	0	0	25				
04	Deutsch,Ryan	g	2	6	0	2	0	0	0	2	2	4	4	0	0	0	1	13			
13	Dunham,Taylor	g	4	9	0	1	2	2	1	4	5	0	10	3	0	3	21				
05	Fisher,Craig	0	1	0	0	0	0	0	1	1	0	0	1	1	0	0	14				
20	Hemmingway,S.	1	4	0	1	0	0	3	1	4	2	2	2	0	0	0	23				
22	Nelson,Jeremiah	0	3	0	0	0	0	2	0	2	1	0	1	2	0	2	13				
41	Hamilton,Doug	4	9	0	2	2	4	3	1	4	1	10	3	5	0	1	21				
42	Resner,Paul	5	11	1	1	0	0	3	4	7	0	11	0	2	0	1	20				
	TEAM								4	5											
	Totals.....	32	79	7	17	8	10	20	27	47	12	79	14	13	0	13	200				



Game 4

Washburn vs Lynn

11/25/06 • at Topeka, Kan./Lee Arena

Score by Periods	1st	2nd	Total	FG%	3FG%	FT%
Lynn	18	22	40	.234	.059	.500
Washburn	48	42	90	.492	.500	.821

VISITORS: Lynn (3-1)

#	Player	tot-fg		3-pt		rebounds		fta	of	de	tot	pf	tp	a	to	blk	s	min
		fg	tga	fg	tga	fta	ftg											
04	Fripp,Rae	f	3	8	0	0	0	1	0	1	3	6	0	3	1	1	20	
11	Mahan,Sarah	f	6	17	0	2	1	3	2	2	4	13	1	2	1	1	31	
12	Armstrong,A.	f	2	9	1	4	0	0	5	2	7	4	5	0	1	0	0	28
10	Williams,Jade	g	1	9	0	4	2	2	0	3	3	0	4	0	4	0	3	24
23	Sykora,Lisa	g	0	4	0	3	1	2	0	2	2	0	1	5	2	0	1	28
03	Black,Vanessa		2	4	0	2	0	0	1	1	2	1	4	0	0	0	0	7
13	Roth,Liz		0	2	0	1	1	2	0	1	1	2	1	0	0	0	0	7
24	Adams,Shamonica	0	1	0	0	0	2	1	4	5	2	0	0	2	0	0	0	10
31	Perry,Krystal	0	2	0	0	0	2	0	1	1	0	0	0	0	0	0	0	17
32	Ahmed,Crystal	0	5	0	2	2	0	1	1	3	2	0	5	0	1	0	0	16
44	Eiland,Bailey	1	3	0	1	2	3	2	0	2	3	4	2	0	0	0	0	12
	TEAM										4	4	8					
	Totals.....		15	64	1	17	9	18	16	21	37	20	40	8	19	2	7	200

HOME TEAM: Washburn (4-0)

#	Player	tot-fg		3-pt		rebounds				fta	of	de	tot	pf	tp	a	to	blk	s	min
		fg	tfg	fga	ftg	fta	ftg	fta												
04	Holmes,Amanda	f	6	9	0	0	3	3	2	9	11	3	15	1	4	1	1	20		
25	Sullivan,Megan	f	4	10	0	0	2	2	3	5	0	10	0	2	0	3	0	18		
32	Ubelaker,Brooke	f	5	5	3	3	4	6	2	5	7	0	17	0	2	0	0	23		
03	Keeley,Cindy	g	2	3	2	3	2	2	0	5	5	2	8	3	0	0	0	23		
10	Aebi,Jessica	g	2	5	1	1	3	4	0	0	0	2	8	5	2	0	1	22		
05	Hellen,K.G.		2	5	0	1	1	2	1	2	3	4	5	0	1	0	3	14		
11	Germano,Renata	4	9	0	0	2	3	2	3	5	2	10	1	0	1	1	1	18		
13	Mainz,Jessica	2	4	0	0	4	4	4	4	1	8	3	0	0	0	0	0	17		
20	Henrichs,Holly	0	0	0	0	0	0	0	0	0	0	0	0	0	0	0	0	7		
21	Stiger,Corkey	3	10	1	5	0	0	1	2	3	3	7	4	1	0	4	22			
23	Wittman,Steph.	0	1	0	1	0	0	0	2	2	0	0	1	1	0	0	0	8		
33	Gregory,Hope	0	0	0	0	2	2	0	1	1	0	2	1	0	0	0	0	8		
	TEAM										2	2								
	Totals.....		30	61	7	14	23	28	10	38	48	17	90	19	13	2	13	200		

Officials: Ted Riesinger, Bart Tyson, Michael Oplotnik

Technical fouls: Lynn-None. Washburn-None.

Attendance: 2375

Notes: The Lady Blues fell behind early trailing 9-8 to Lynn, but weny on a 25 to 4 run over the final 7:27 of the first half, taking 48-18 lead into the break. Washburn would stretch the lead to as many as 54 points in the half. Brooke Ubelaker led all scorers as she recorded 13 of her 17 in the first half as she hit was a perfect 3-of-3 from the field (all 3-pointers) with four free throws - all in 14 minutes of action.

Game 7

Washburn vs Benedictine

12/12/06 at Topeka, Kan./Lee Arena

Score by Periods	1st	2nd	Total	FG%	3FG%	FT%
Benedictine	29	36	65	.490	.400	.750
Washburn	42	39	81	.478	.357	.800

VISITORS: Benedictine (8-3)

#	Player	tot-fg		3-pt		rebounds				fta	of	de	tot	pf	tp	a	to	blk	s	min
		fg	tga	fg	tga	fta	ftg	trb												
20	Edmonds,Court.	f	5	7	2	3	1	0	2	2	1	13	3	1	0	1	0	1	26	
35	Winder,Abby	f	5	8	0	0	3	3	0	3	0	13	1	3	0	1	0	1	25	
40	Stuhlsatz,Leah	c	4	7	1	1	0	0	1	4	5	9	0	0	0	0	0	0	19	
03	Keims,Carrie	g	1	4	0	2	2	2	1	2	3	1	4	1	0	0	0	2	20	
23	Reilly,Nicole	g	4	6	0	2	0	2	1	2	3	8	1	6	2	0	0	24		
04	Huff,Drew	0	1	0	1	0	0	0	0	0	0	1	0	0	0	0	0	5		
05	Kovac,Sydni	0	1	0	1	0	0	1	2	0	0	2	6	1	0	0	1	14		
12	Finazzo,Angeline	3	7	3	5	2	2	0	1	1	11	1	6	0	0	0	0	21		
21	Raplinger,Christina	1	2	0	0	0	0	0	1	1	1	2	1	1	0	0	0	10		
30	Morrison,Melinda	0	3	0	0	1	2	0	1	1	1	1	0	0	1	1	0	17		
33	Marsden,Amber	2	5	0	0	0	0	0	4	4	1	4	0	3	0	0	0	19		
	TEAM										1	4	5							
	Totals.....		25	51	6	15	9	12	5	25	30	12	65	11	26	4	6	200		

HOME TEAM: No. 5 Washburn (6-1)

#	Player	fg		3-pt		rebounds						fta	of	de	tot	pf	tp	a	to	blk	s	min
		fg	tfg	fga	ftg	fta	ftg	fta	ftg	fta	ftg											
04	Holmes,Amanda	f	0	4	0	1	3	4	1	4	5	2	3	1	7	0	3	19				
25	Sullivan,Megan	f	4	6	0	0	1	3	3	1	4	1	9	1	1	0	0	19				
32	Ubelaker,Brooke	f	4	9	1	3	0	0	1	2	3	0	9	3	1	0	0	24				
03	Keeley,Cindy	g	3	9	1	4	0	0	1	1	2	7	1	0	1	0	22					
10	Aebi,Jessica	g	1	3	0	2	2	2	2	2	1	4	2	0	2	23						
05	Hellen,K.G.	g	3	7	0	0	0	0	0	0	3	6	1	1	0	17						
11	Germano,Renata	8	12	0	0	0	0	2	2	4	1	16	1	2	1	19						
13	Mainz,Jessica	0	0	0	0	0	1	1	2	0	4	0	1	6	1	17						
15	Holmes,Nikki	3	8	1	3	0	0	0	2	2	7	3	0	0	0	12						
20	Henrichs,Holly	0	1	0	0	0	0	1	1	0	0	0	1	0	0	5						
21	Stiger,Corkey	6	8	2	3	6	2	3	5	2	20	5	1	0	3	20						
23	Wittman,Stephanie	0	0	0	0	0	0	0	0	0	0	0	1	0	1	3						
	TEAM										1	2										
	Totals.....		32	67	5	14	12	15	11	20	31	14	81	23	14	2	18	200				

Officials: Phil Griffin, Jeff Stromgren, Melissa Ulsaker

Technical fouls: Benedictine-None. Washburn-None.

Attendance: 2250

Notes: Washburn would lead by as many as 16 points before taking a 42-29 lead into the break. In the second half, Washburn had their lead cut to six points at 44-38, but a 10-0 Lady Blue run over the next 1:37 pushed the lead back to 16 and the Ravens would not get closer than 11 the rest of the way. Corkey Stiger had a career high 20 points off the bench on 6 of 8 shooting from the field.

Game 5

Washburn vs Southwestern College

12/04/06 at Topeka, Kan./Lee Arena

Score by Periods	1st	2nd	Total	FG%	3FG%	FT%
Southwestern (Kan.)	24	12	36	.269	.267	.667
Washburn	29	40	69	.403	.421	.538

VISITORS: Southwestern (Kan.) (6-2)

#	Player	tot-fg		3-pt		rebounds		fta	of	de	tot	pf	tp	a	to	blk	s	min
		fg	tga	fg	tga	fta	ftg											
15	Gandy,Cortney	f	2	7	0	0	0	0	1	4	5	2	4	0	2	2	1	26
22	Wilson,Jenna	f	0	2	0	0	0	2	1	4	5	4	0	0	3	0	0	19
05	Beal,Kara	g	5	14	3	7	0	0	0	0	0	3	13	2	4	0	0	29
23	Harvey,Haley	g	0	3	0	2	0	0	1	0	1	0	0	1	0	0	0	21
30	Jones,Whitney	g	1	3	0	0	0	0	0	0	0	2	2	3	0	0	0	21
10	Johnson,Brae	0	0	0	0	0	0	0	0	0	0	0	0	0	0	0	1	4
11	Greenberg,Melissa	1	6	1	3	2	2	1	3	4	1	5	0	2	0	0	0	18
12	Bunting,Shawnte	2	3	0	0	1	1	0	2	2	0	5	1	0	0	0	0	7
14	Colcasure,Kinsey	0	3	0	3	0	0	0	3	3	1	0	1	2	0	0	0	17
20	Larsen,Caylin	0	3	0	0	0	0	1	5	6	0	0	0	2	0	0	0	19
24	Jarnagin,Jordan	0	2	0	0	0	0	0	0	0	0	0	0	0	0	0	0	4
34	Baker,Whitney	3	6	0	0	1	1	0	1	1	7	0	1	1	1	1	1	15
	TEAM										2	4	6					
	Totals.....		14	52	4	15	4	6	7	26	33	14	36	5	19	3	3	200

HOME TEAM: No. 2 Washburn (5-0)

#	Player	tot-fg
---	--------	--------



Game 10

Washburn vs Glenville State
12/20/06 • at Honolulu, Hawaii (Kiluea District Gym)

Score by Periods	1st	2nd	Total	FG%	3FG%	FT%
Glenville State	26	31	57	.400	.263	1.000
Washburn	33	36	69	.482	.231	.667

VISITORS: No. 7 Glenville State College (6-2)

#	Player	f	fga	fg	tfg	3pt	fta	ft	of	de	tot	tp	a	to	blk	s	min
22	Rachel Redick	f	8	16	2	8	4	4	0	2	2	5	22	5	0	0	33
32	Casey Taylor	f	7	19	2	4	2	2	1	4	5	3	18	2	4	1	29
40	Melanie Oliver	f	3	7	0	0	0	0	1	2	3	2	6	1	2	0	25
14	Lauren Strong	g	0	3	0	2	2	2	1	3	0	2	2	2	0	0	22
20	Karina Kendrick	g	2	4	0	1	0	0	3	3	6	4	0	1	1	0	25
04	C. DiSabato	1	2	0	0	0	0	2	1	3	0	2	4	5	0	1	16
10	Miranda Reed	0	1	0	1	0	0	0	0	0	0	0	0	0	0	0	2
12	Mallory Menendez	0	0	0	0	0	0	0	0	0	0	0	0	0	0	0	4
24	Christy Alltop	1	2	1	2	0	0	0	3	3	3	3	1	4	0	0	26
30	Donita Adams	0	0	0	0	0	0	1	0	1	1	0	0	0	0	0	5
42	Casey Heller	0	1	0	1	0	0	1	0	1	0	0	0	0	0	0	3
	TEAM										2	1	3		1		
	Totals.....		22	55	5	19	8	8	13	17	30	17	57	15	24	2	5 200

HOME TEAM: No. 5 Washburn (9-1)

#	Player	tot-fg		3-pt		rebounds												
		fg	tfg	fga	ft	fta	of	de	tot	pf	tp	a	to	blk	s	min		
04	Holmes,Amanda	f	6	11	0	0	1	2	1	0	1	3	13	0	2	2	1	27
25	Sullivan,Megan	f	5	8	0	0	1	2	1	0	1	4	11	1	1	0	1	19
32	Ubelaker,Brooke	f	6	15	3	7	0	0	5	2	7	0	15	0	4	1	1	34
03	Keeley,Cindy	g	2	5	0	2	4	6	2	2	4	2	8	4	2	0	2	29
10	Aebi,Jessica	g	4	10	0	2	3	4	0	4	2	11	3	3	0	0	31	
05	Hellen,K.G.	1	1	0	0	0	0	0	0	0	0	2	0	0	0	0	2	
11	Germano,Renata	0	0	0	0	0	0	0	1	1	1	0	1	3	0	0	5	
13	Mainz,Jessica	0	0	0	0	1	2	0	4	2	1	1	0	0	0	0	17	
15	Holmes,Nikki	0	0	0	0	0	0	0	0	0	0	0	0	0	0	0	8	
21	Stiger,Corkey	3	6	0	2	2	2	3	5	0	0	8	7	2	0	3	28	
	TEAM																	
	Totals.....		27	56	3	13	12	18	13	20	33	14	69	17	17	3	8	200

Officials: Mark Gines, Dan Morgan, Tom Hood

Technical fouls: Glenville State College-None. Washburn Univ.-None.

Attendance: 139

Notes: The No. 5 Washburn Lady Blues picked up a 69-57 win over No. 7 Glenville State in their final game in the Hoop-N-Surf Classic in Hawaii. Washburn took the lead for good on a lay-up by Cindy Keeley at 25-24 before taking a seven-point margin in at halftime at 33-26. In the second half, Washburn opened on a 13-5 run building a 46-31 lead and stretching it out to a 17-point margin at 52-35 before Glenville State rallied to cut the lead back to 54-46 with 8:10 remaining. Washburn held the Lady Panthers to one field goal over the next six-plus minutes taking the 12-point win. Brooke Ubelaker led four Lady Blues in double figures with 15 points. Following the classic, Corkey Stiger was named to the All-Tournament team.

Game 13

Washburn vs Northwest Missouri State
1/6/07 • at Topeka, Kan./Lee Arena

Score by Periods	1st	2nd	Total	FG%	3FG%	FT%
Northwest Missouri	20	37	57	.321	.200	.690
Washburn	34	37	71	.433	.214	.583

VISITORS: Northwest Missouri (9-4, 2-2 MIAA)

#	Player	tot-fg		3-pt		rebounds		f	t	a	of	de	tot	pf	tp	a	to	blk	s	min
		fg	tga	fg	tga	ft	fta													
34	Williams,Lauren	f	0	3	0	0	0	1	1	2	0	0	2	0	2	0	2	2	23	
50	Schumacher,M.	c	2	9	0	0	4	4	2	3	5	2	8	1	1	0	1	0	1	22
04	O'Grady,Katie	g	2	8	0	3	1	1	0	1	1	5	1	1	0	0	0	10	0	25
21	Brue,Meghan	g	4	10	1	4	7	12	3	5	8	3	16	1	5	0	2	0	2	35
22	Nelson,Kelli	g	1	6	0	4	0	1	3	4	0	2	2	0	2	0	2	0	23	33
03	Bayer,Lindsay	1	4	0	0	0	0	1	1	2	0	2	2	1	0	1	0	1	12	
23	Miller,April	1	1	0	0	0	0	1	1	2	2	1	2	1	0	0	0	0	1	13
24	Uriell,Micaela	1	1	0	0	0	0	0	0	0	0	2	1	0	0	0	0	0	2	
30	Burton,Jessica	1	5	1	3	6	7	1	3	4	2	9	0	1	1	0	1	1	0	19
44	Baker,Ashley	4	6	1	1	2	4	2	1	3	3	11	1	1	1	1	2	1	16	
	TEAM																			
	Totals.....		17	53	3	15	20	29	12	24	36	15	57	8	14	2	11	2	11	200

HOME TEAM: No. 3 Washburn (12-1, 3-1 MIAA)

#	Player		fg	ft	3-pt	fta	of	de	tot	pf	tp	a	to	blk	s	min		
04	Holmes,Amanda	f	4	12	0	3	2	3	5	8	13	3	10	0	2	1	0	17
25	Sullivan,Megan	f	0	1	0	0	0	0	1	1	4	0	1	1	0	1	0	11
32	Ubelaker,Brooke	f	7	11	2	6	2	2	1	4	5	0	18	4	2	0	1	30
03	Keeley,Cindy	g	3	7	1	4	0	2	1	3	2	7	4	1	0	1	26	
10	Aebi,Jessica	g	3	10	1	7	0	0	0	1	1	3	7	2	2	0	24	
11	Germano,Renata	2	3	0	0	3	4	1	2	3	7	1	1	2	0	17		
13	Mainz,Jessica	1	3	0	0	0	2	4	1	5	2	2	1	0	1	0	24	
15	Holmes,Nikki	3	7	0	3	0	1	1	4	5	3	6	3	2	1	0	14	
20	Henrichs,Holly	0	0	0	0	0	0	0	0	0	0	0	0	0	0	0	3	
21	Stiger,Corkey	6	11	2	5	0	0	3	3	6	1	14	1	3	1	0	28	
23	Wittman,Stephanie	0	2	0	0	0	0	0	0	0	0	0	0	1	0	0	6	
	TEAM								1	2	3							
	Totals.....		29	67	6	28	7	12	18	27	45	21	71	17	15	6	2	200

Officials: Randy Dillon, Mark Wallace, Robyn Wesbrook

Technical fouls: Northwest Missouri-None. Washburn-None.

Attendance: 2750

Notes: The No. 3 ranked Washburn Lady Blues breezed to a 71-57 win over Northwest Missouri in Lee Arena. The win for the Lady Blues was the 22nd straight over the Lady Bears in Lee Arena. The Lady Blues trailed at 2-0, but it was all Washburn as they jumped out to a 34-20 halftime lead. In the second half, the Lady Blues increased their lead to as many as 27 as they went on to win the win. Brooke Ubelaker led the Lady Blues with 18 points, with eight straight in the second half. Corkey Stiger scored 14 and Amanda Holmes recorded her sixth double double of the season and her second straight with 10 points and a career-high 13 rebounds.

Game 11

Washburn at Central Missouri
12/30/06 • at Warrensburg, Mo. (UCM Multi)

Score by Periods	1st	2nd	Total	FG%	3FG%	FT%
Washburn	29	37	66	.481	.238	.563
Central Missouri	26	18	44	.292	.294	.611

VISITORS: No. 5 Washburn (10-1, 1-1 MIAA)

#	Player	tot-fg		3-pt		rebounds												
		fg	tga	fg	tga	ft	fta	of	de	tot	pf	tp	a	to	blk	s	min	
04	Holmes,Amanda f	2	7	0	2	2	6	1	3	4	3	6	4	1	0	1	30	
25	Sullivan,Megan f	1	4	0	0	1	2	1	4	5	0	3	1	0	0	0	15	
32	Ubelaker,Brooke f	7	8	3	4	0	0	4	2	6	3	17	0	2	0	1	22	
03	Keeley,Cindy g	4	8	1	4	0	0	3	5	8	0	9	3	1	2	1	36	
10	Aebi,Jessica g	3	5	0	1	0	0	0	3	3	2	6	2	1	0	1	29	
11	Germano,Renata	0	0	0	0	0	0	1	1	0	0	0	0	1	0	0	3	
13	Mainz,Jessica	2	3	0	0	1	2	1	1	2	1	5	0	2	0	3	17	
15	Holmes,Nikki	2	6	1	4	0	0	0	1	1	5	0	4	0	0	0	18	
20	Henrichs,Holly	0	0	0	0	2	2	0	0	0	0	2	0	0	0	0	2	
21	Stiger,Corkey	5	13	0	6	3	4	1	3	4	2	13	3	3	0	2	26	
23	Wittman,Stephanie	0	0	0	0	0	0	0	2	2	0	0	0	0	0	0	2	
	TEAM							2	4	6			1					
	Totals.....	26	54	5	21	9	16	13	29	42	12	66	13	16	2	9	200	

HOME TEAM: Central Missouri (8-3, 1-1 MIAA)

||
||
||



Game 16

Washburn vs Southwest Baptist

01/07/07 • at Topeka, Kan./Lee Arena

Score by Periods	1st	2nd	Total	FB%	3FG%	FT%
Southwest Baptist	31	25	56	.386	.333	.667
Washburn	40	48	88	.507	.238	.722

VISITORS: Southwest Baptist (10-5, 2-4 MIAA)

#	Player	tot-fg		3-pt		rebounds				fta	of	de	tot	pf	tp	a	to	blk	s	min
		fg	tga	fg	tga	ft	fta	tr												
34	Brito,Livia	f	5	10	2	3	0	0	1	3	4	2	12	1	5	0	0	1	21	
40	Hanchey,Leslie	f	3	5	1	1	2	2	4	6	0	8	2	0	0	0	0	0	24	
03	Bybee,Traci	g	2	4	0	2	1	2	0	2	2	0	5	0	3	0	1	22		
15	Shewmaker,C.	g	1	2	0	0	0	0	0	0	0	2	1	1	0	0	0	18		
32	Graves,Rachel	g	1	7	1	4	0	0	2	3	5	0	3	1	4	0	2	25		
04	Salscheider,K.	0	1	0	0	0	0	0	0	0	1	0	0	0	0	0	0	3		
20	Souza,Erika	3	10	1	5	3	4	1	2	3	1	10	5	4	0	1	22			
22	Creed,Courtney	0	1	0	0	0	0	0	0	0	0	0	1	2	0	1	11			
24	Wheeler,Amber	3	7	1	3	0	0	0	2	2	1	7	0	2	0	0	0	19		
31	Reeves,Erica	3	3	0	0	1	1	0	0	0	0	7	0	1	1	2	17			
54	Reinkemeyer,Kelly	1	7	0	0	0	0	3	0	3	4	2	0	3	1	0	18			
TEAM																				
Totals.....		22	57	6	18	6	9	11	20	31	9	56	11	26	2	8	200			

HOME TEAM: No. 2 Washburn (15-1, 6-1 MIAA)

#	Player	fg	ft	3-pt	rebounds	fta	of	de	tot	pf	tp	a	to	blk	s	min		
		fg	ft	fg	ft	fg	ft	fg	ft	fg	ft	fg	ft	fg	ft	fg		
04	Holmes,Amanda	f	4	8	0	1	8	12	2	5	7	2	16	1	1	3	24	
25	Sullivan,Megan	f	5	8	0	0	0	1	0	1	4	10	3	2	0	0	13	
32	Ubelaker,Brooke	f	7	15	4	11	0	0	1	1	0	18	2	0	1	27		
03	Keeley,Cindy	g	5	6	1	2	0	0	2	3	5	2	11	1	3	0	4	30
10	Aebi,Jessica	g	4	8	0	0	0	0	2	2	1	8	5	3	0	4	28	
11	Germano,Renata	2	2	0	0	5	6	1	2	3	0	9	0	1	0	0	10	
13	Mainz,Jessica	4	6	0	0	0	2	2	4	1	8	5	2	0	3	21		
15	Holmes,Nikki	1	6	0	3	0	0	0	4	4	1	2	0	1	0	1	13	
20	Henrichs,Holly	0	0	0	0	0	0	0	0	0	1	0	0	0	0	0	4	
21	Stiger,Corkey	3	8	0	3	0	0	4	8	0	6	1	0	5	24	0	6	
23	Wittman,Stephanie	0	2	0	1	0	0	2	1	3	0	0	2	0	0	0	6	
TEAM																		
Totals.....		35	69	5	21	13	18	15	25	40	12	88	20	14	4	19	200	

Officials: Phil Griffin, Ralph Edwards, Harvey Randle

Technical fouls: Southwest Baptist-None. Washburn-None.

Attendance: 2150

Notes: The Lady Blues used a pair of big runs to start each half and forced 26 turnovers leading to 36 points in an 88-56 win over Southwest Baptist. Washburn opened the game on a 20-4 run over the first 7:52 of the game on 9-of-13 shooting from the field. Southwest Baptist cut into the lead and eventually cut in back to six at 31-25 with 3:08 remaining in the half. In the second half, Washburn started the half on a 37-10 run over the opening 11:46 of the half pushing the lead to 36 at 77-41. Ubelaker led the Lady Blues with 18 points, pacing four Washburn starters in double figures followed by Amanda Holmes with 16, Cindy Keeley with 11 and Megan Sullivan with 10.

Game 19

Washburn at Missouri Western

02/07/07 • at St. Joseph, Mo. - MWSU Fieldhouse

Score by Periods	1st	2nd	Total	FB%	3FG%	FT%
Washburn	25	22	47	.357	.125	.308
Missouri Western	24	25	49	.327	.150	.714

VISITORS: No. 3 Washburn (17-2, 8-2 MIAA)

#	Player	tot-fg		3-pt		rebounds		fta	of	de	tot	pf	tp	a	to	blk	s	min
		fg	tfg	fg	tfg	ft	fta											
04	Holmes,Amanda	f	7	12	1	4	2	6	2	1	3	5	17	1	2	2	2	30
25	Sullivan,Megan	f	1	4	0	0	1	2	0	1	1	1	3	0	2	0	0	11
32	Ubelaker,Brooke	f	5	13	1	9	1	1	3	4	7	0	12	1	2	0	2	37
03	Keeley,Cindy	g	1	7	1	4	0	2	2	7	9	1	3	3	1	0	0	35
10	Aebi,Jessica	g	1	3	0	1	0	0	2	2	1	2	1	3	0	1	0	38
11	Germano,Renata	0	0	0	0	0	0	0	0	0	0	0	0	0	1	0	2	
13	Mainz,Jessica	2	2	0	0	0	2	2	5	7	1	4	3	4	0	2	0	19
15	Holmes,Nikki	1	2	0	1	0	0	0	0	0	0	2	0	1	0	1	3	
21	Stiger,Corkey	2	13	0	5	0	0	2	6	8	1	4	4	2	0	1	2	25
TEAM																		
Totals.....		20	56	3	24	4	13	12	29	41	10	47	13	18	2	9	2	200

HOME TEAM: No. 2 Missouri Western (20-0, 10-0 MIAA)

HOME TEAM NO. 2 MISSISSIPPI STATE (LO-B, 40 MIN)																		
#	Player	tot-fg		3-pt		rebounds		fta	of	de	tot	pf	tp	a	to	hik	s	min
		fg	tga	fg	tga	ft	fta											
31	Johnson,Jill	f	3	8	0	1	4	6	2	3	5	1	10	1	2	0	3	34
44	Petersen,Tera	f	3	8	1	5	0	0	0	3	3	0	7	0	1	0	0	31
11	Buzoka,Inga	c	5	16	0	1	4	4	2	3	5	3	14	0	1	1	2	30
13	Davis,Tiffany	g	1	5	0	3	0	0	0	8	8	4	2	8	5	0	4	38
32	Javois,Yanique	g	2	8	0	4	0	0	1	4	5	1	4	2	0	0	1	33
20	Thomas,Amanda	0	1	0	1	0	0	0	1	1	0	0	1	1	0	1	0	8
22	Woods,Chemia	0	0	0	0	0	0	0	0	0	0	1	0	0	1	0	0	2
23	Curry,Ashleigh	4	9	2	5	2	4	2	5	7	4	12	1	2	0	0	24	
TEAM																		
Totals.....		18	55	3	20	10	14	8	29	37	14	49	13	13	1	11	200	

Officials: Rhonda Grayson, Richard Brewer, Heath Harms

Technical fouls: Washburn-None. Missouri Western-None.

Attendance: 3750

Notes: Amanda Holmes led the Lady Blues with 17 points but after nine lead changes in the second half the second-ranked Missouri Western Griffons defeated No. 3 Washburn 49-47 in a sold out MWSU Fieldhouse. Down by three with 13 seconds remaining, WU's Cindy Keeley missed a 3-pointer. The Lady Blues got the rebound and Megan Sullivan was fouled. The clock kept ticking after the whistle and was stopped with under a second remaining. After it was sorted out one second was put on the clock. Sullivan missed her first free throw and made the second, putting WU down by two. The Lady Blues tried to foul on the inbound pass but time ticked away for good and the Griffons held on. Ubelaker scored 12 points and Keeley led the Lady Blues with nine rebounds. Washburn shot 36 percent, their second lowest effort of the year.

Game 17

Washburn vs Pittsburg State

01/07/07 • at Topeka, Kan./Lee Arena

Score by Periods	1st	2nd	Total	FB%	3FG%	FT%
Pittsburg State	27	28	55	.333	.294	.667
Washburn	36	48	84	.500	.321	.733

VISITORS: Pittsburg State (7-9, 2-6 MIAA)

#	Player	tot-fg		3-pt		rebounds				fta	of	de	tot	pf	tp	a	to	blk	s	min
		fg	tfg	fga	fta	ft	fta	re	tot											
14	Klein,Janelle	f	1	4	0	0	0	0	0	3	2	2	0	0	0	0	0	0	0	30
20	Gilbert,Candice	f	3	10	0	0	9	12	3	7	10	1	15	0	2	0	2	0	2	36
32	Poppe,Marissa	f	4	14	2	6	2	5	1	4	5	4	12	3	3	0	0	0	0	31
52	Patry,Tracy	c	1	4	0	1	1	2	1	3	4	3	3	0	2	1	0	0	0	30
13	Nimz,Anna	g	5	13	2	4	0	0	3	3	6	2	12	3	1	0	1	0	1	34
10	Hale,Chayla	0	0	0	0	0	0	0	0	0	1	0	0	0	0	0	0	0	0	1
23	Sloan,Emily	0	0	0	0	0	0	0	0	0	0	0	0	0	0	0	0	0	0	5
24	Pierce,Nikki	2	2	0	0	2	2	0	0	0	0	6	0	3	0	0	0	0	0	8
25	Hinkin,Katelyn	1	4	0	3	0	0	0	0	0	0	2	2	1	0	0	0	0	0	12
44	Curtis,Natasha	1	3	1	3	0	0	0	0	0	1	3	0	1	0	0	1	0	0	13
TEAM																				
Totals.....		18	54	5	17	14	21	11	20	31	15	55	10	14	1	3	200			

HOME TEAM: No. 2 Washburn (16-1, 7-1 MIAA)

#	Player	fg	3-pt	rebounds	fta	of	de	tp	a	to	blk	s	min					
04	Holmes, Amanda	f	2	3	0	0	1	4	1	5	6	4	5	0	1	0	0	1
25	Sullivan, Megan	f	3	7	0	0	2	2	2	3	5	1	8	0	0	0	2	21
32	Ubelaker, Brooke	f	7	13	3	8	4	5	3	5	8	2	21	1	2	1	1	32
03	Keecley, Cindy	g	5	8	1	4	0	0	2	0	2	5	11	2	0	0	2	24
10	Aebi, Jessica	g	4	10	2	7	0	0	0	3	3	1	10	4	4	0	1	32
13	Germano, Renata	g	0	0	0	0	0	0	1	1	1	0	1	1	0	0	0	10
11	Mainz, Jessica	g	2	5	0	0	0	0	1	3	4	3	4	7	0	0	2	24
15	Holmes, Nikki	g	3	5	1	3	0	0	0	3	3	2	7	0	1	0	1	8
20	Henrichs, Holly	g	0	0	0	0	2	2	1	0	1	0	2	0	0	0	0	2
23	Stiger, Corkey	g	5	12	1	5	2	2	1	4	5	1	13	2	0	3	0	30
23	Wittman, Stephanie	1	1	1	1	0	0	0	1	1	0	3	0	0	0	0	1	2
TEAM		1 2 3																
Totals.....		32	64	9	28	11	15	12	30	42	20	84	17	9	3	11	200	



Game 22

Washburn vs Southwest Baptist																	
02/06/07 • at Bolivar, Mo./Meyer Sports Center																	
Score by Periods																	
	1st	2nd	Total		FG%		3FG%		FT%								
Washburn	40	36	76		.483		.571		.556								
Southwest Baptist	21	35	56		.418		.250		.417								
VISITORS: No. 4 Washburn (20-2, 11-2 MIAA)																	
tot-fg 3-pt rebounds																	
##	Player	fg	fga	fg	fga	ft	fta	of	de	tot	pf	tp	a	to	blk	s	min
04	Holmes,Amanda	f	4	9	0	0	0	0	0	4	4	2	8	1	0	0	16
25	Sullivan,Megan	f	2	7	0	0	3	4	5	3	8	0	7	5	0	0	23
32	Ubelaker,Brooke	f	8	12	4	7	1	2	2	1	3	1	21	1	1	0	28
03	Keeley,Cindy	g	2	5	1	2	2	2	6	8	1	7	3	2	0	0	31
10	Aebi,Jessica	g	0	2	0	0	0	2	0	1	1	3	0	3	3	0	29
11	Germano,Renata	2	3	0	0	0	0	0	2	2	3	4	1	3	1	0	9
13	Mainz,Jessica	1	4	0	0	3	7	1	2	3	1	5	1	1	0	0	22
15	Holmes,Nikki	0	1	0	0	0	0	0	5	5	1	0	2	1	0	1	12
20	Henrichs,Holly	0	0	0	0	0	0	0	0	0	0	0	0	0	0	0	3
21	Stiger,Corkey	10	16	3	5	1	1	0	2	2	2	24	2	0	0	3	24
23	Wittman,Stephanie	0	1	0	0	0	0	0	0	0	1	0	0	1	0	0	3
TEAM		3 3															
Totals.....		29	60	8	14	10	18	10	29	39	15	76	19	12	1	7	200

HOME TEAM: Southwest Baptist (12-10, 4-9 MIAA)																	
tot-fg 3-pt rebounds																	
##	Player	fg	fga	fg	fga	ft	fta	of	de	tot	pf	tp	a	to	blk	s	min
34	Brito,Livia	f	6	11	1	1	2	4	3	5	8	2	15	2	4	1	3
40	Hanchey,Leslie	f	2	4	0	0	0	0	2	2	4	3	4	0	0	0	18
03	Bybee,Traci	g	3	8	3	8	0	0	0	3	3	2	9	1	1	0	22
15	Shewmaker,C.	g	2	4	0	1	2	2	0	1	1	0	6	3	1	0	29
32	Graves,Rachel	g	1	5	0	2	0	2	0	4	4	2	2	1	4	0	28
04	Salscheider,Kristina	2	3	0	1	0	0	0	2	2	1	4	0	0	0	0	8
20	Souza,Erika	2	5	0	2	1	2	0	2	2	1	5	1	1	0	1	13
22	Creed,Courtney	2	3	1	2	0	2	0	1	1	0	5	2	3	0	1	13
24	Wheeler,Amber	2	8	0	3	0	0	0	2	2	2	4	2	0	0	0	23
31	Reeves,Erica	0	1	0	0	0	0	0	0	0	1	0	1	0	0	0	10
54	Reinkemeyer,Kelly	1	3	0	0	0	0	1	0	1	0	2	0	0	0	1	7
TEAM																	
Totals.....		23	55	5	20	5	12	7	25	32	14	56	13	15	1	8	200

Officials: Amy Bonner, Debbie Adams, Nick Marshall
Technical fouls: Washburn-None. Southwest Baptist-None.
Attendance: 644
Notes: The Lady Blues 19-point halftime lead was threatened as the Lady Bearcats scored the first six points of the second half to get within 13. SBU then cut it to 13 again at 45-32. Washburn quickly slowed SBU with a 13-0 run with Corkey Stiger scoring eight of those points and at one point late in the half scoring 13 of Washburn's 15 points. She had 17 second half points and ended the night with 24, one off her season-high set Saturday at Pittsburg State. She was 10-of-16 from the field with three 3-pointers. Brooke Ubelaker was the other Lady Blue to reach 20 points as she finished 8-of-12 from the field. Ubelaker recorded her 94th game scoring in double figures at Washburn.